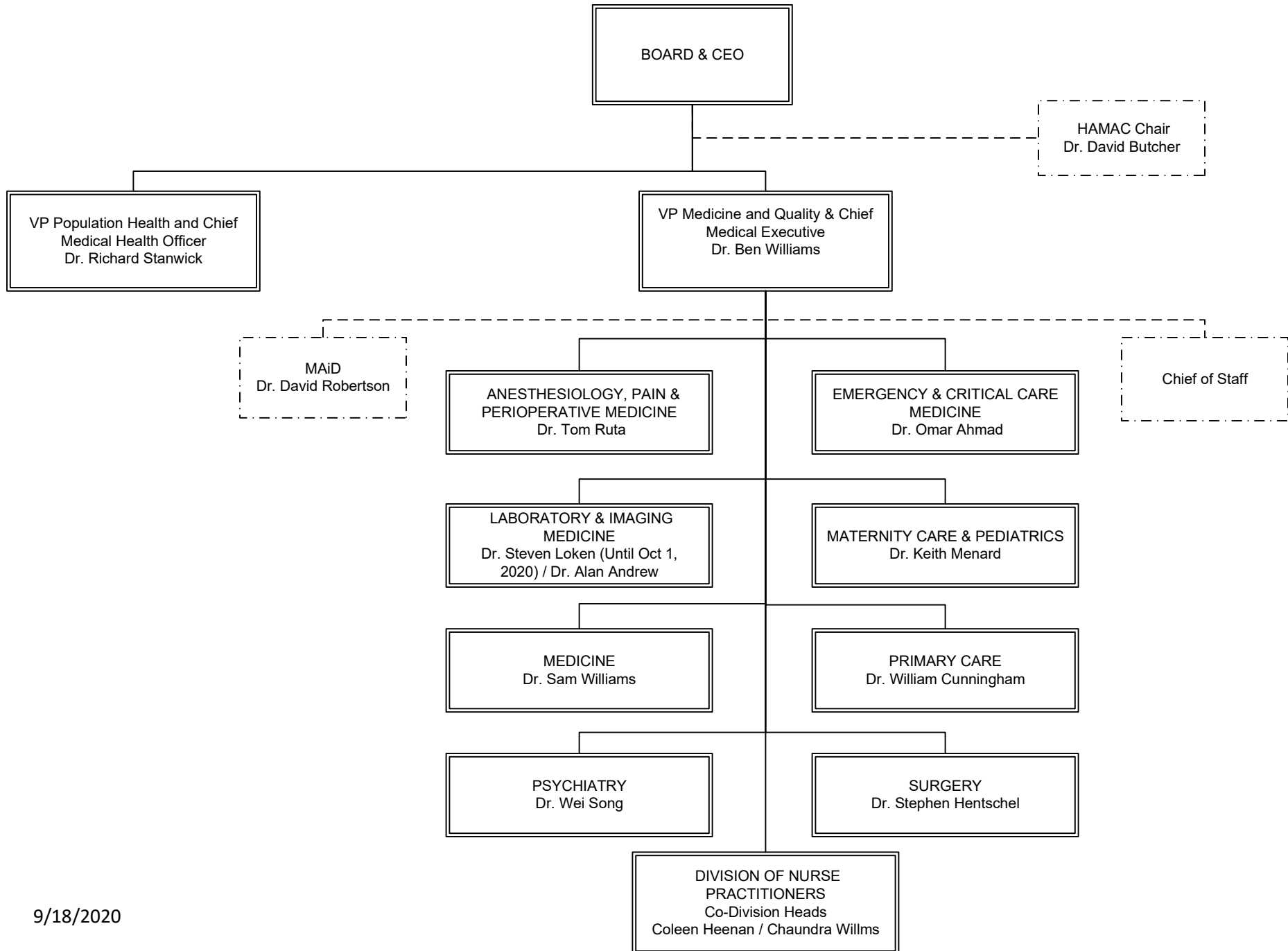


Island Health Medical Staff Department Structure

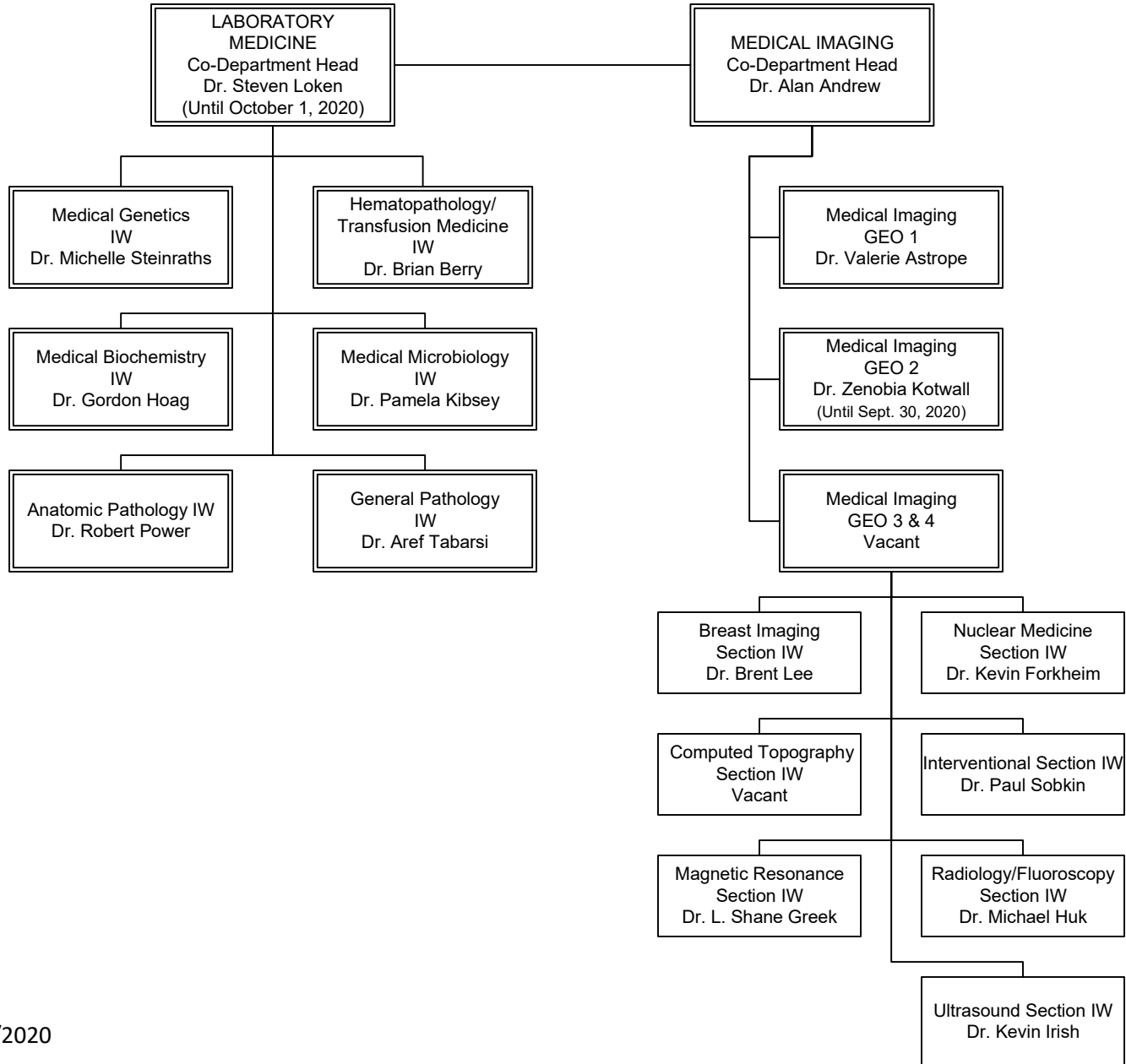


Department Head

Division Head

Section Head

Laboratory & Imaging Medicine



9/18/2020

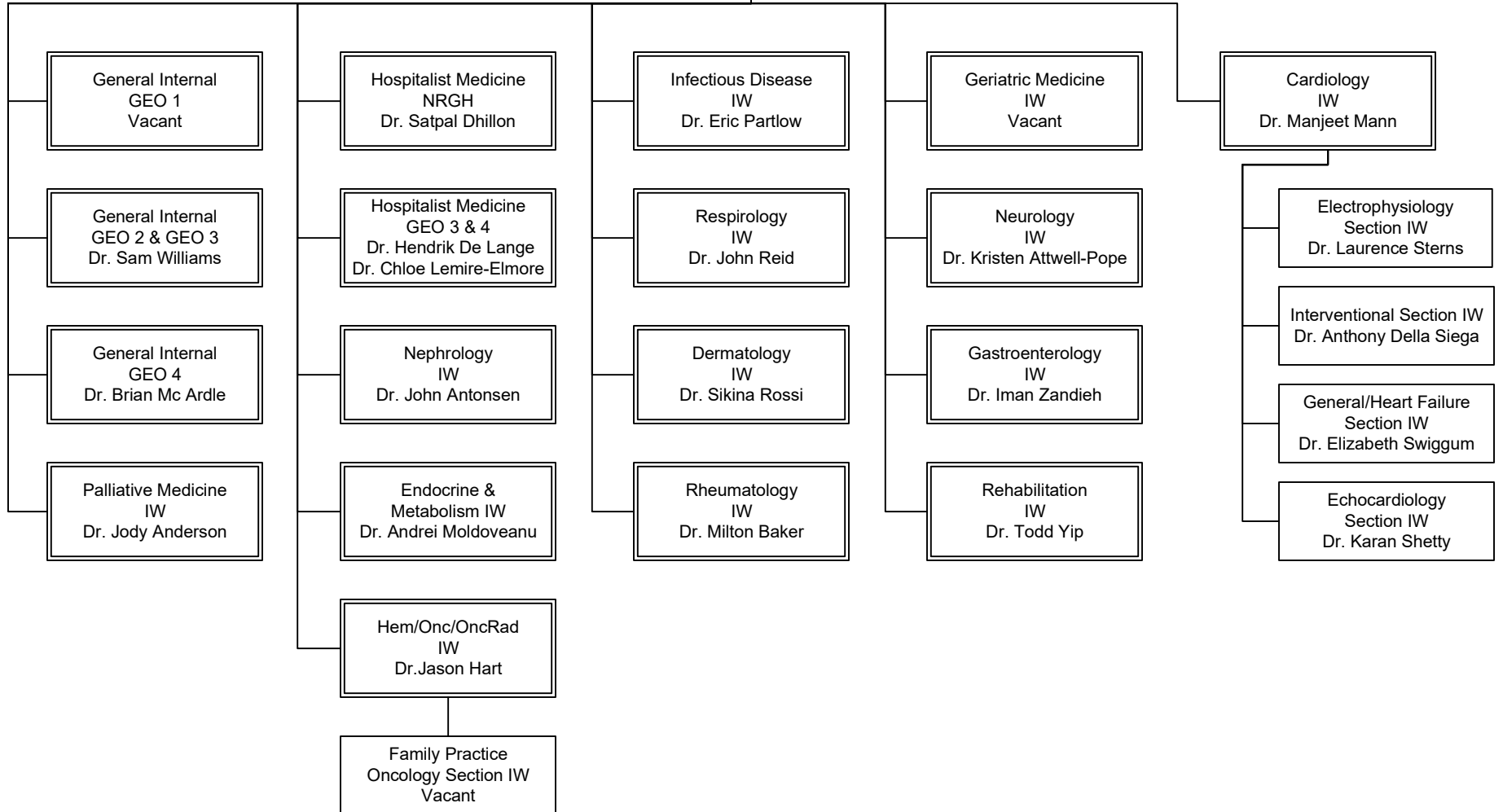
Department Head

Division Head

Section Head

Medicine

MEDICINE
Department Head
Dr. Sam Williams

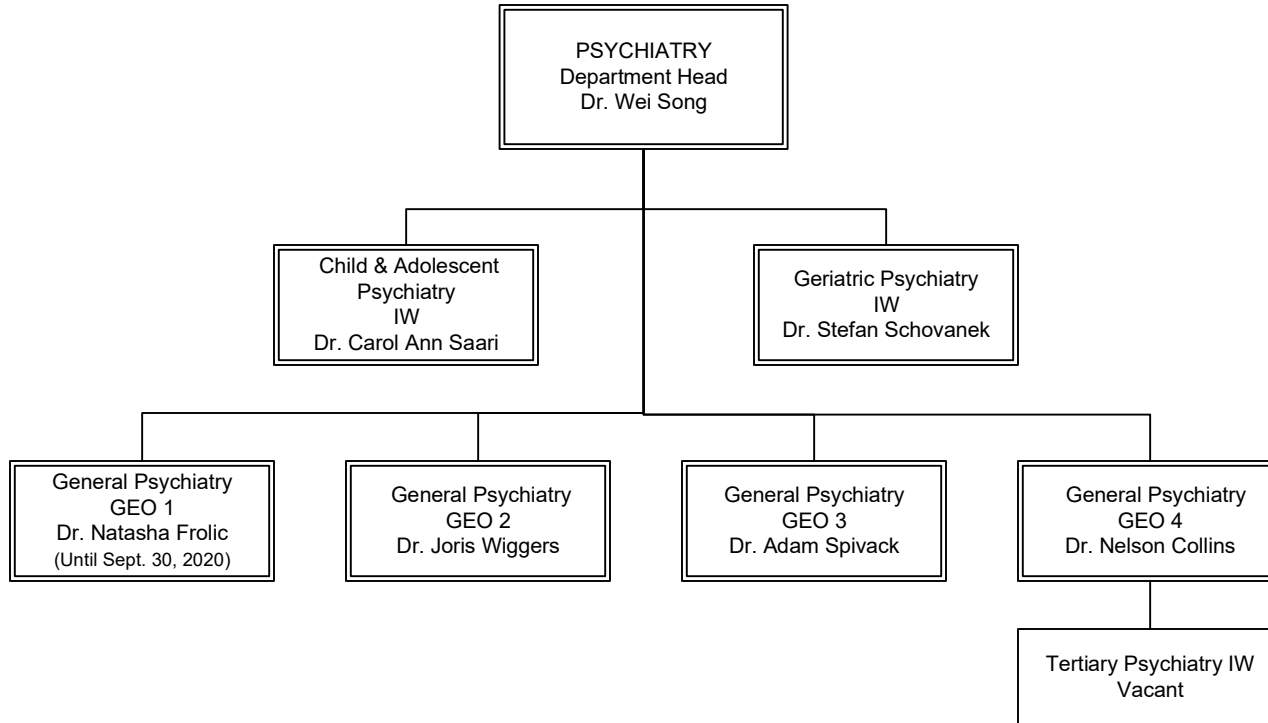


Department Head

Division Head

Section Head

Psychiatry



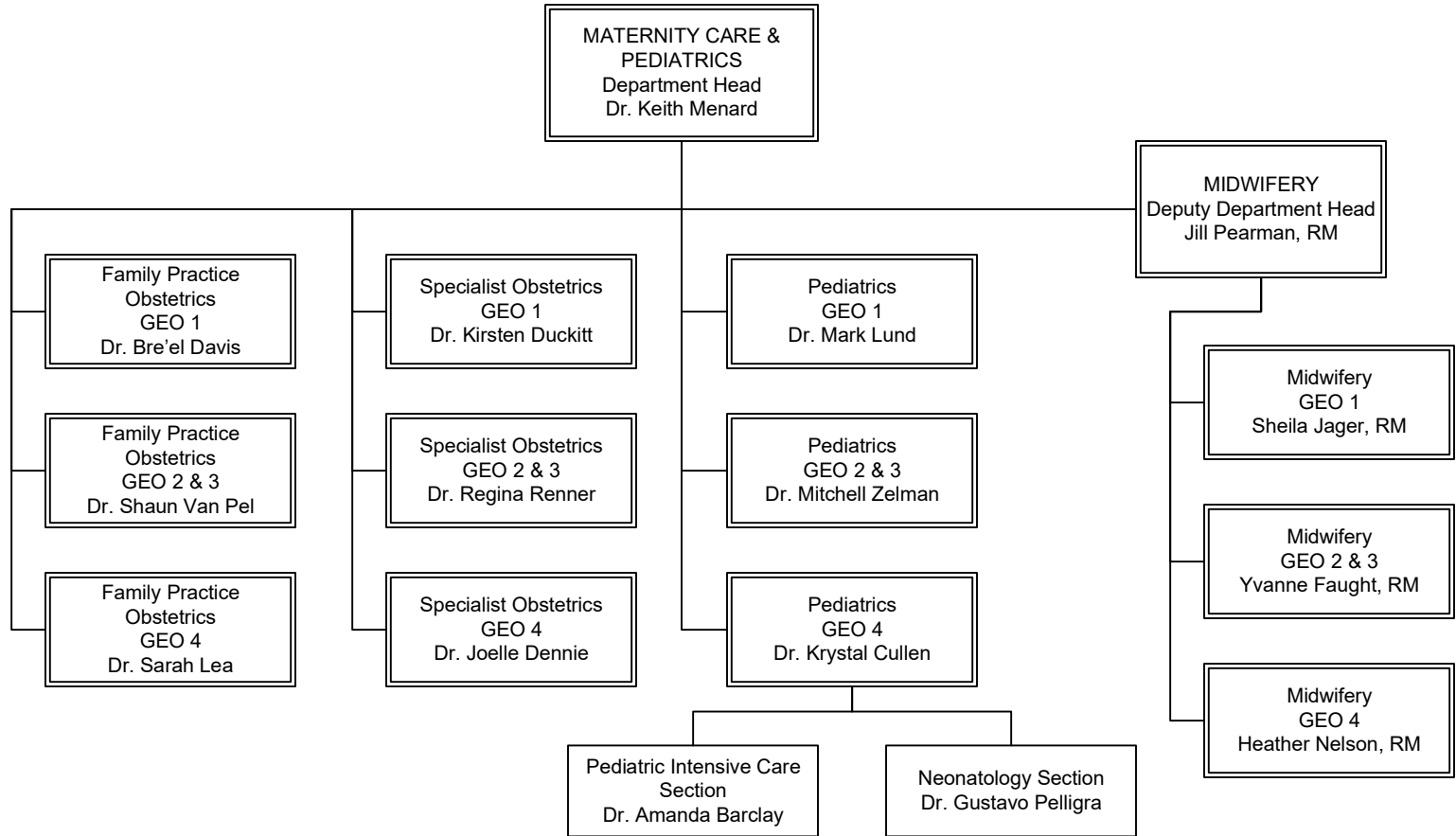
9/18/2020

Department Head

Division Head

Section Head

Maternity Care & Pediatrics



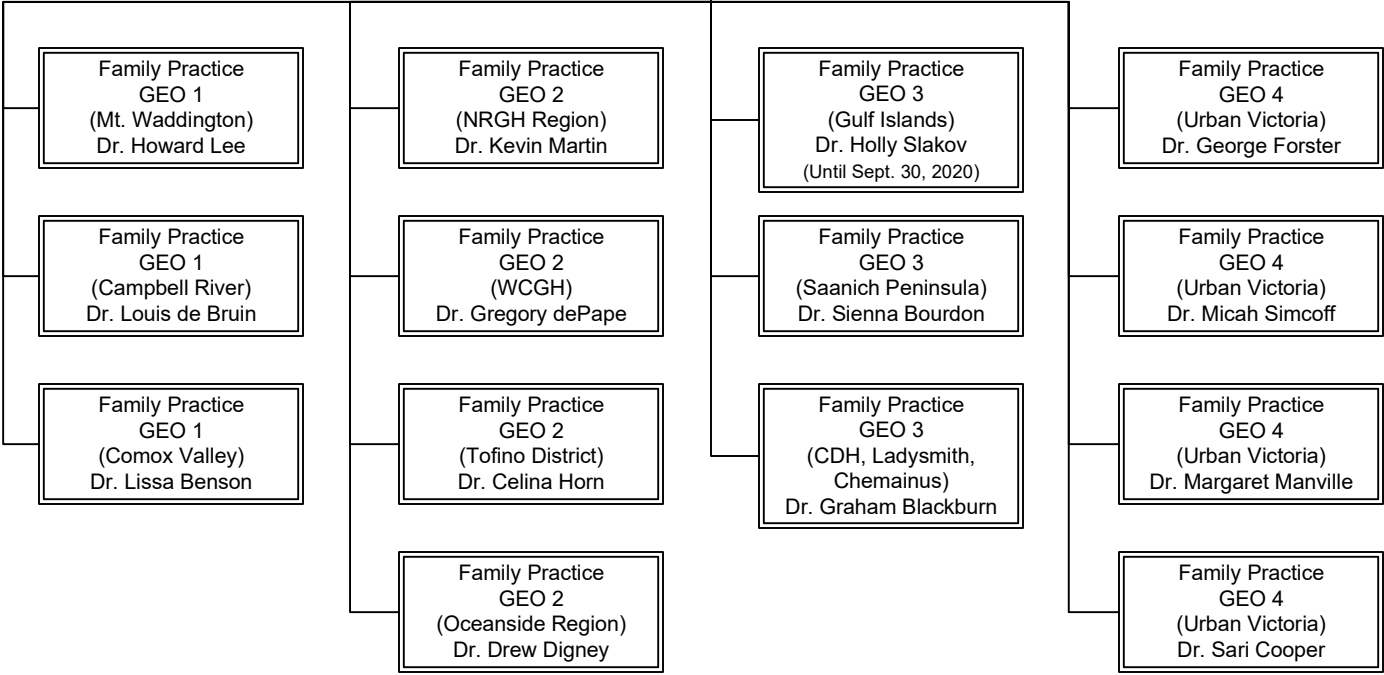
Department Head

Division Head

Section Head

Primary Care

PRIMARY CARE
Department Head
Dr. William Cunningham



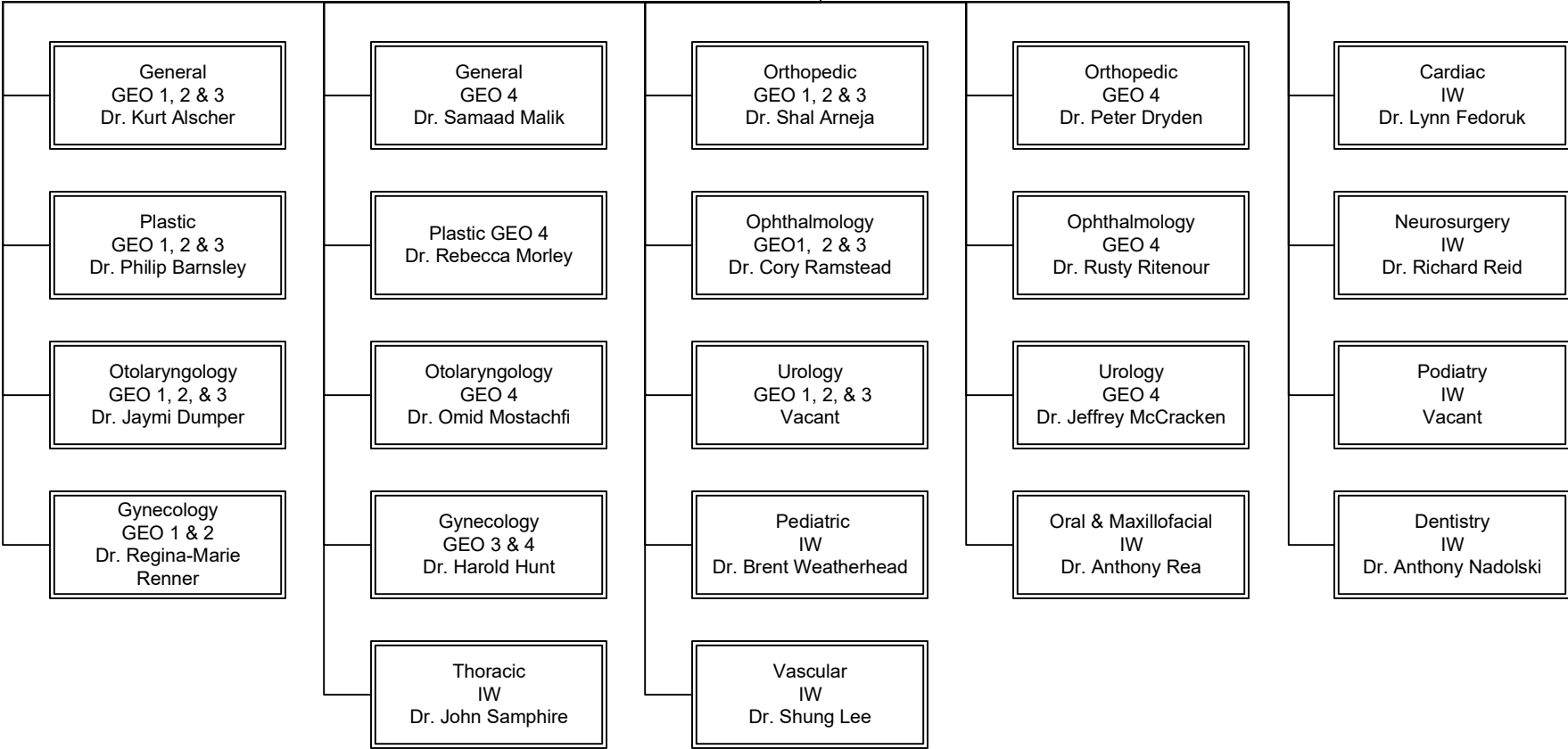
Department Head

Division Head

Section Head

Surgery

SURGERY
Department Head
Dr. Stephen Hentschel

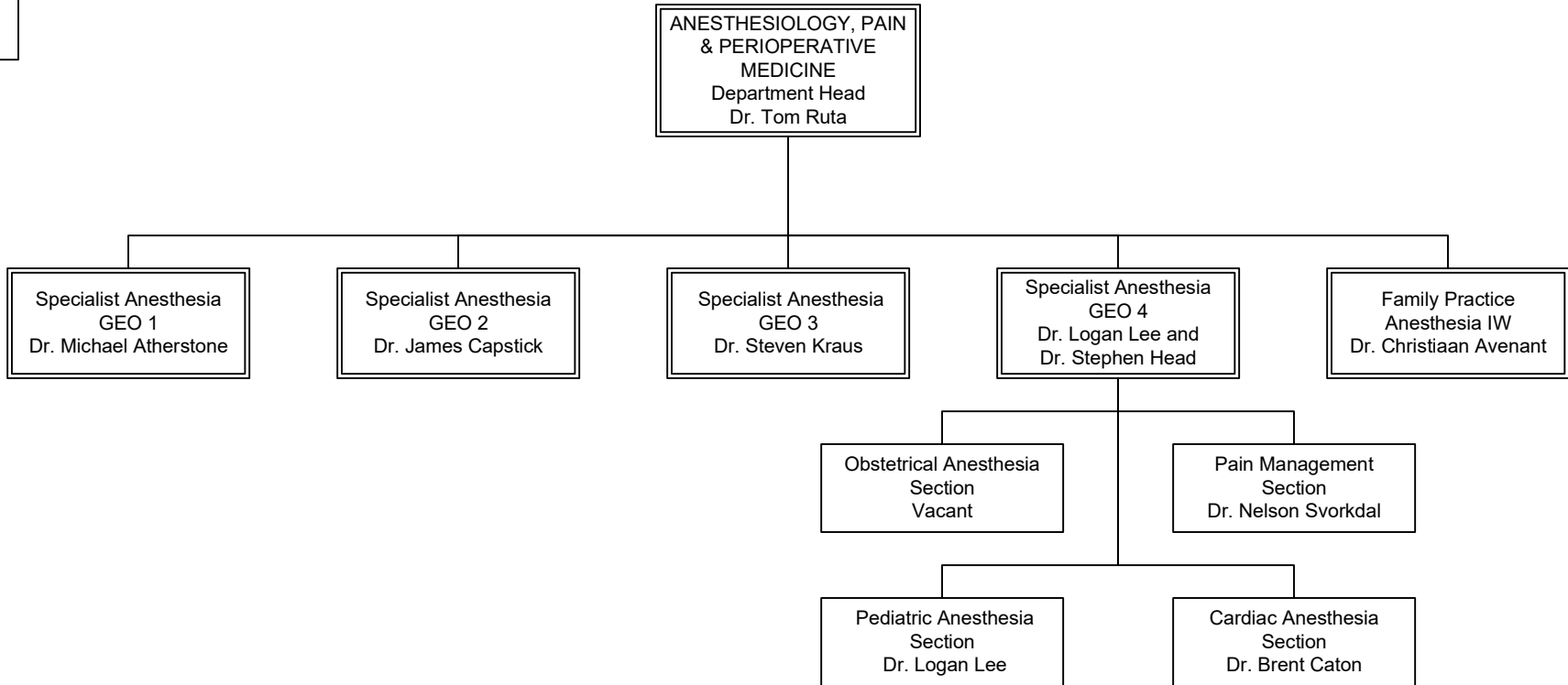


Department Head

Division Head

Section Head

Anesthesiology, Pain and Perioperative Medicine

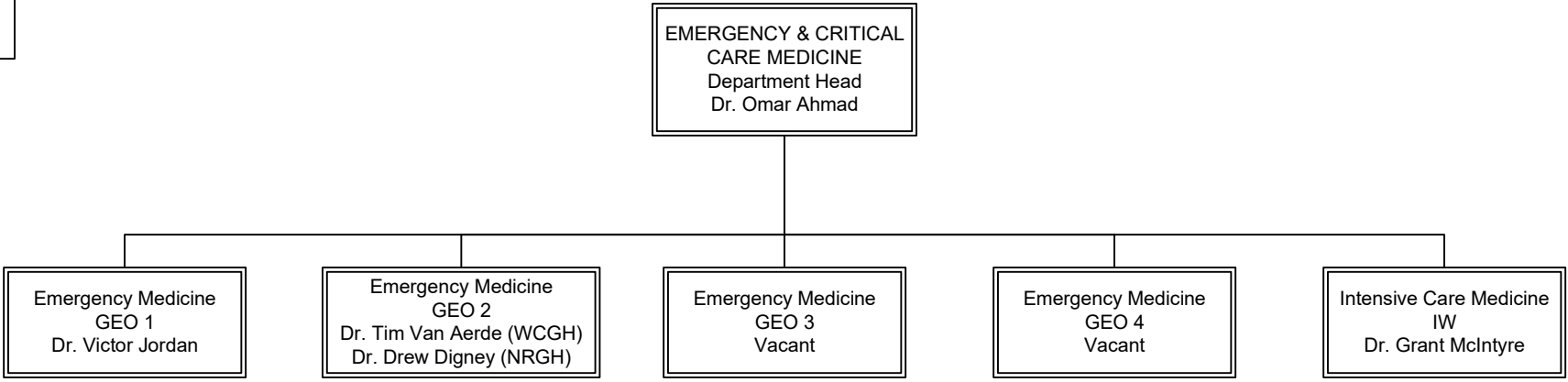


Department
Head

Division Head

Section Head

Emergency & Critical Care Medicine



Chief of Staff

