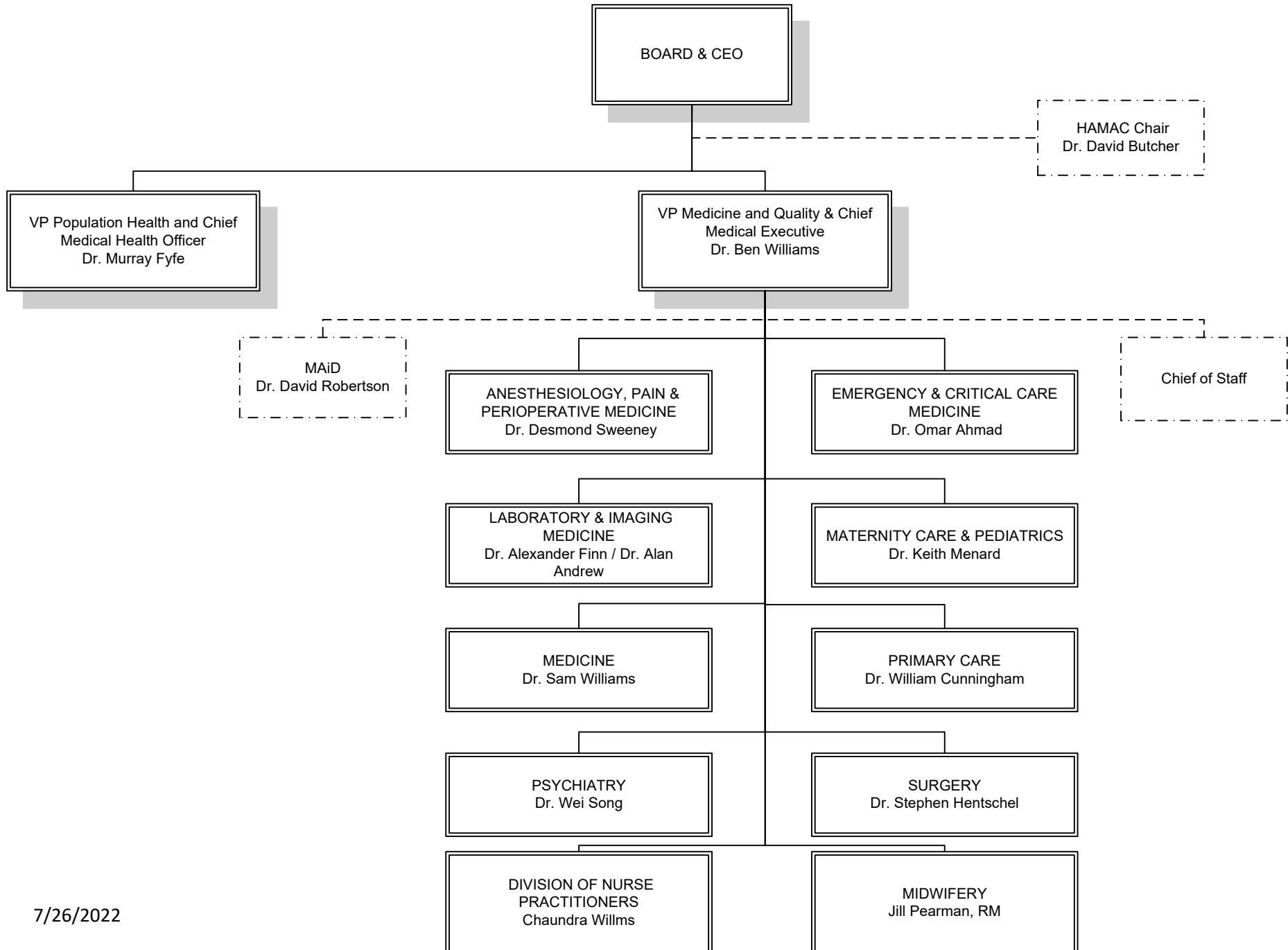


Island Health Medical Staff Department Structure

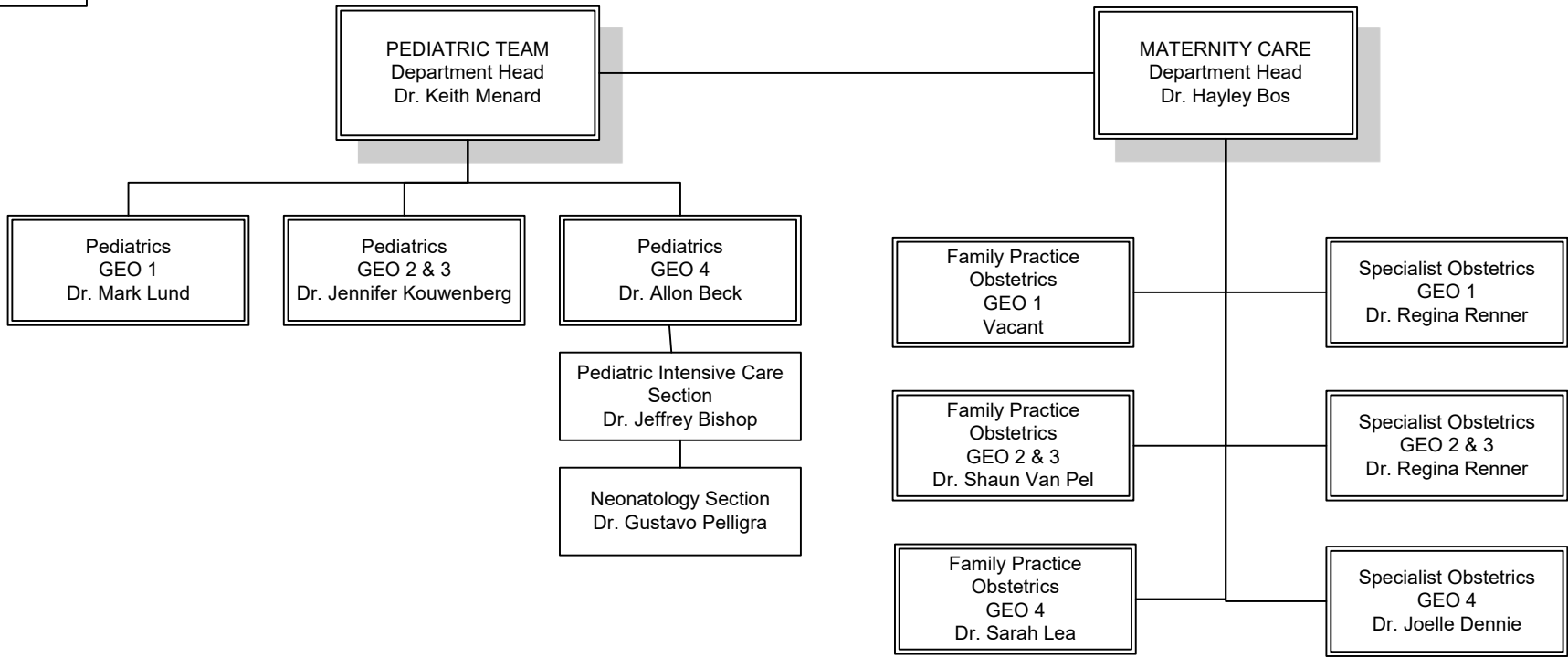


Department Head

Division Head

Section Head

Maternity Care and Pediatrics

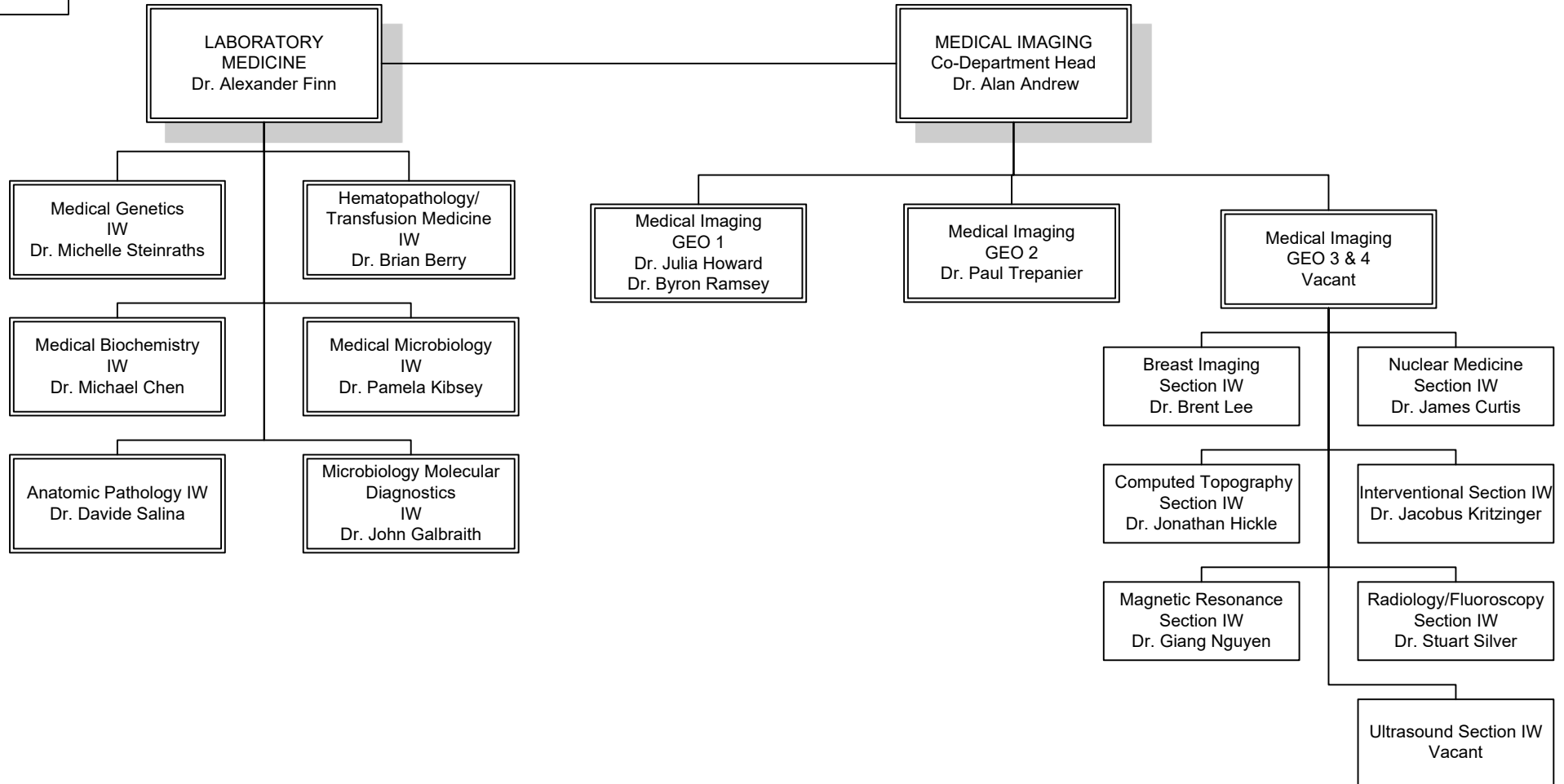


Department Head

Division Head

Section Head

Laboratory Medicine and Medical Imaging



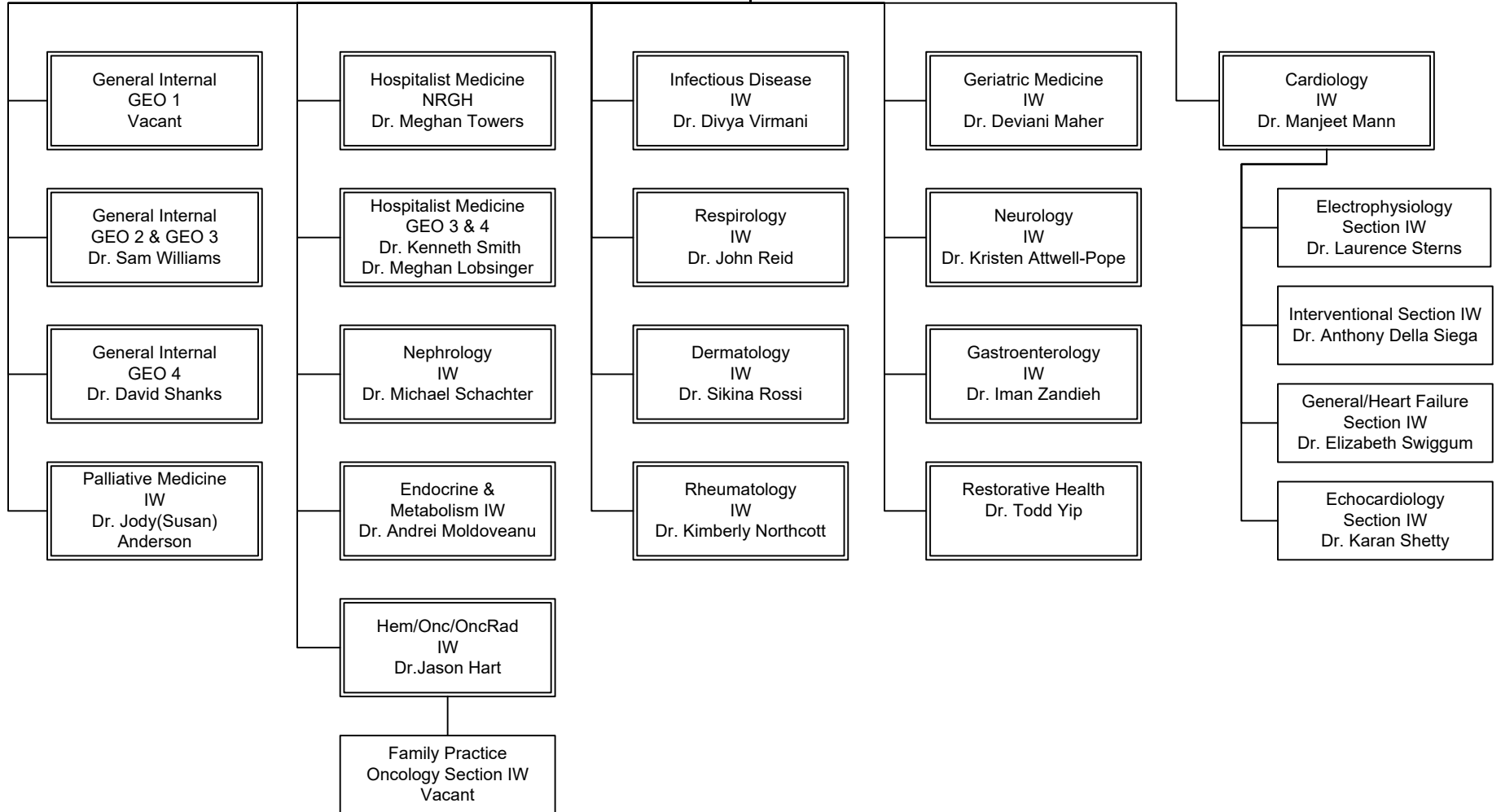
Department Head

Division Head

Section Head

Medicine

MEDICINE
Department Head
Dr. Sam Williams

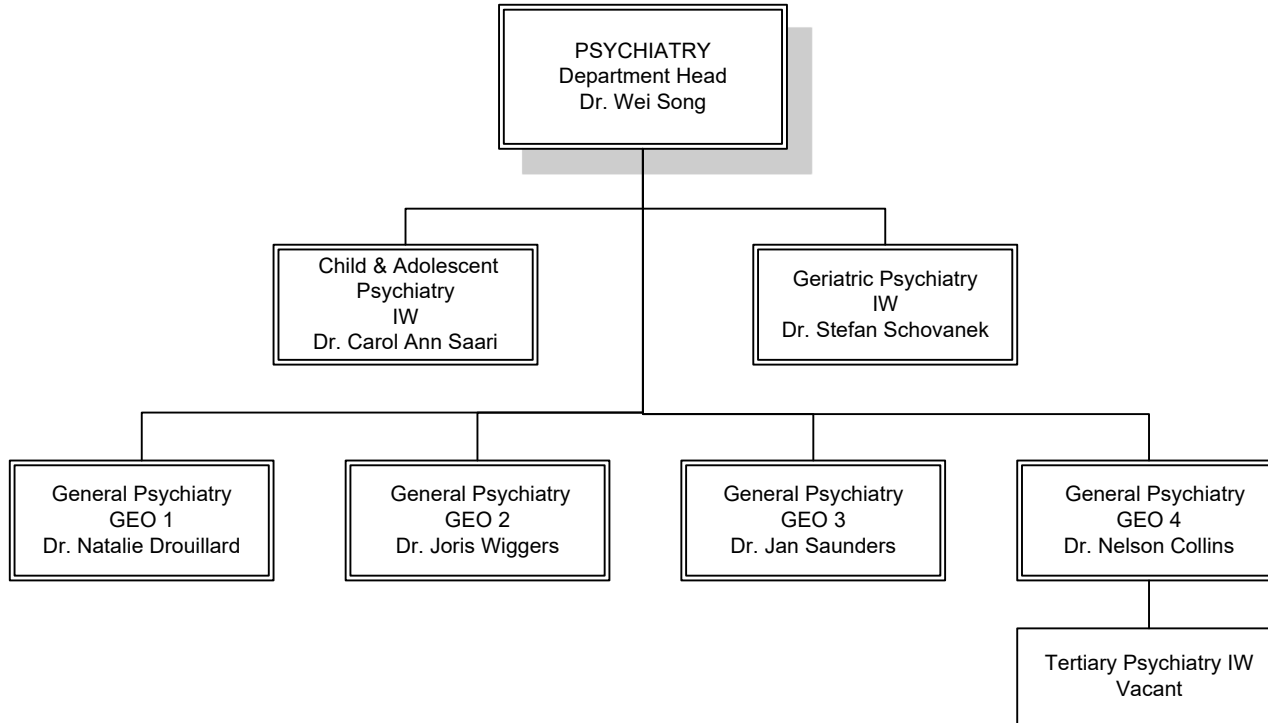


Department Head

Division Head

Section Head

Psychiatry



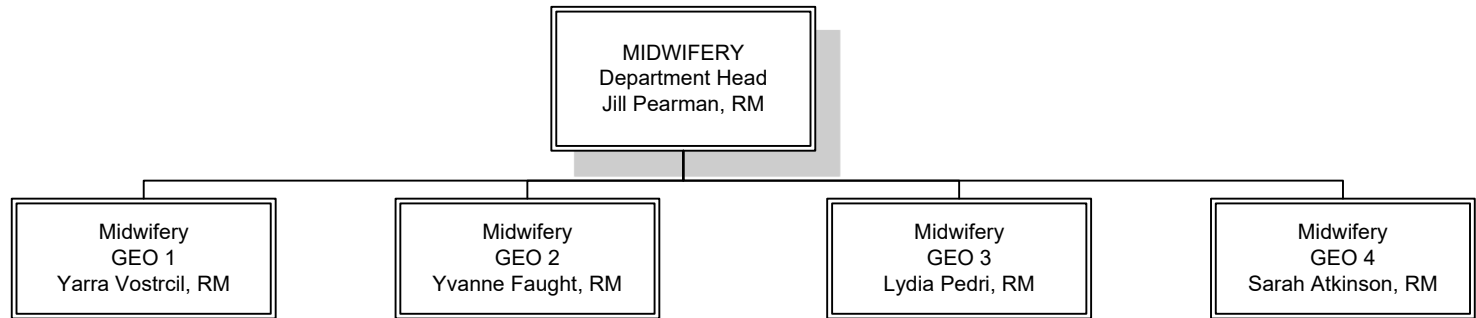
7/26/2022

Department
Head

Division Head

Section Head

Midwifery



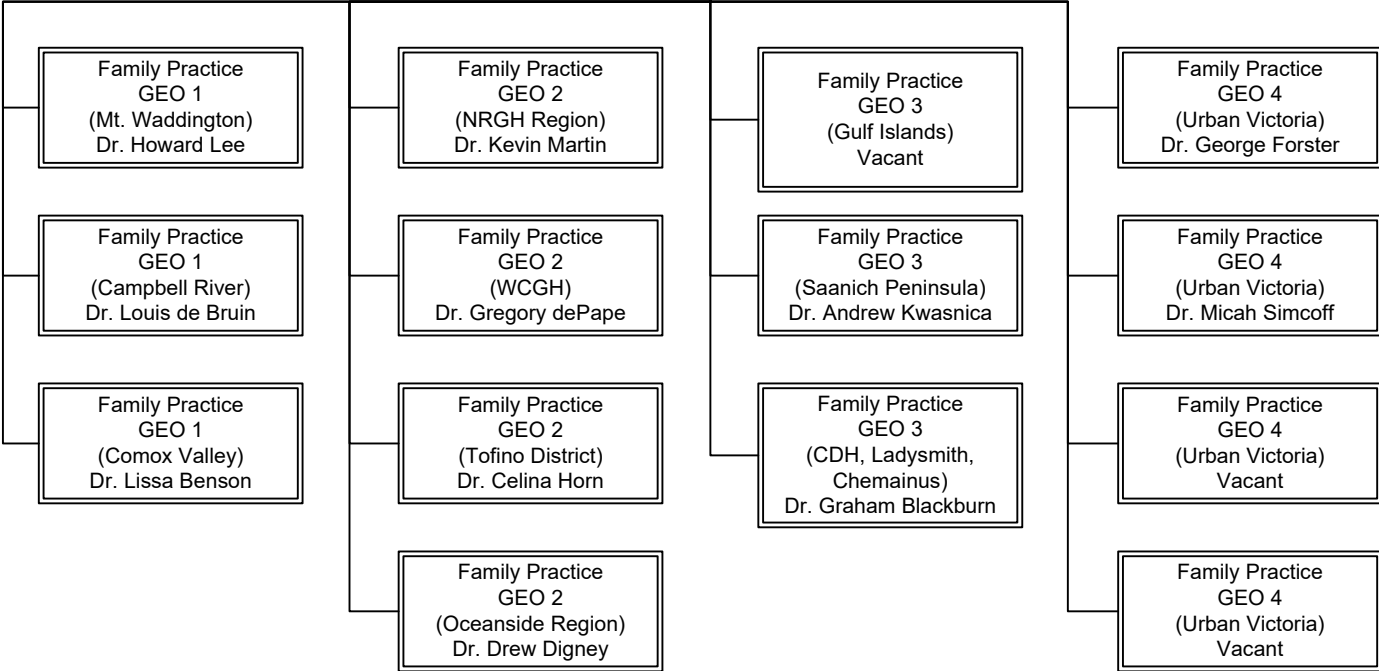
Department Head

Division Head

Section Head

Primary Care

PRIMARY CARE
Department Head
Dr. William Cunningham



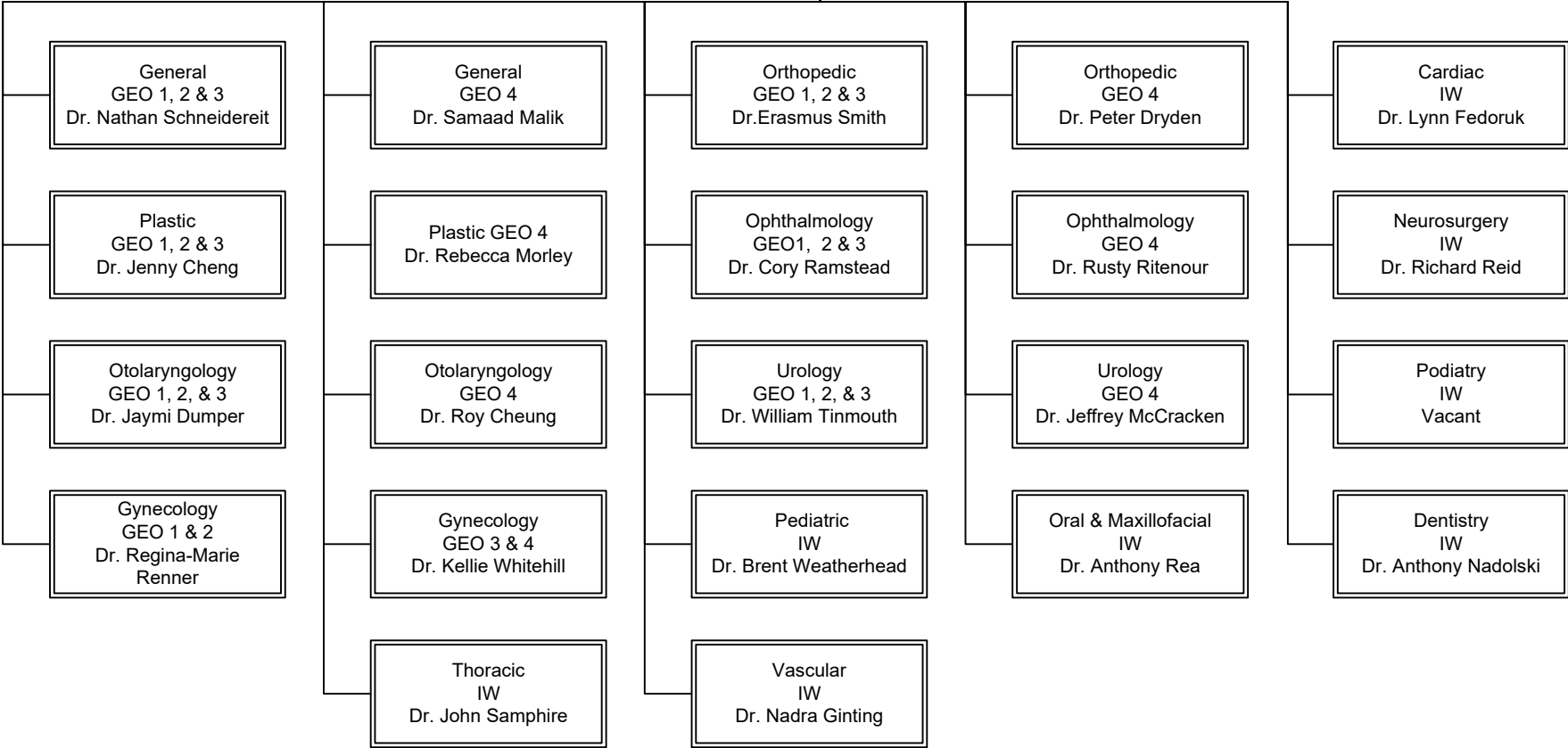
Department Head

Division Head

Section Head

Surgery

SURGERY
Department Head
Dr. Stephen Hentschel

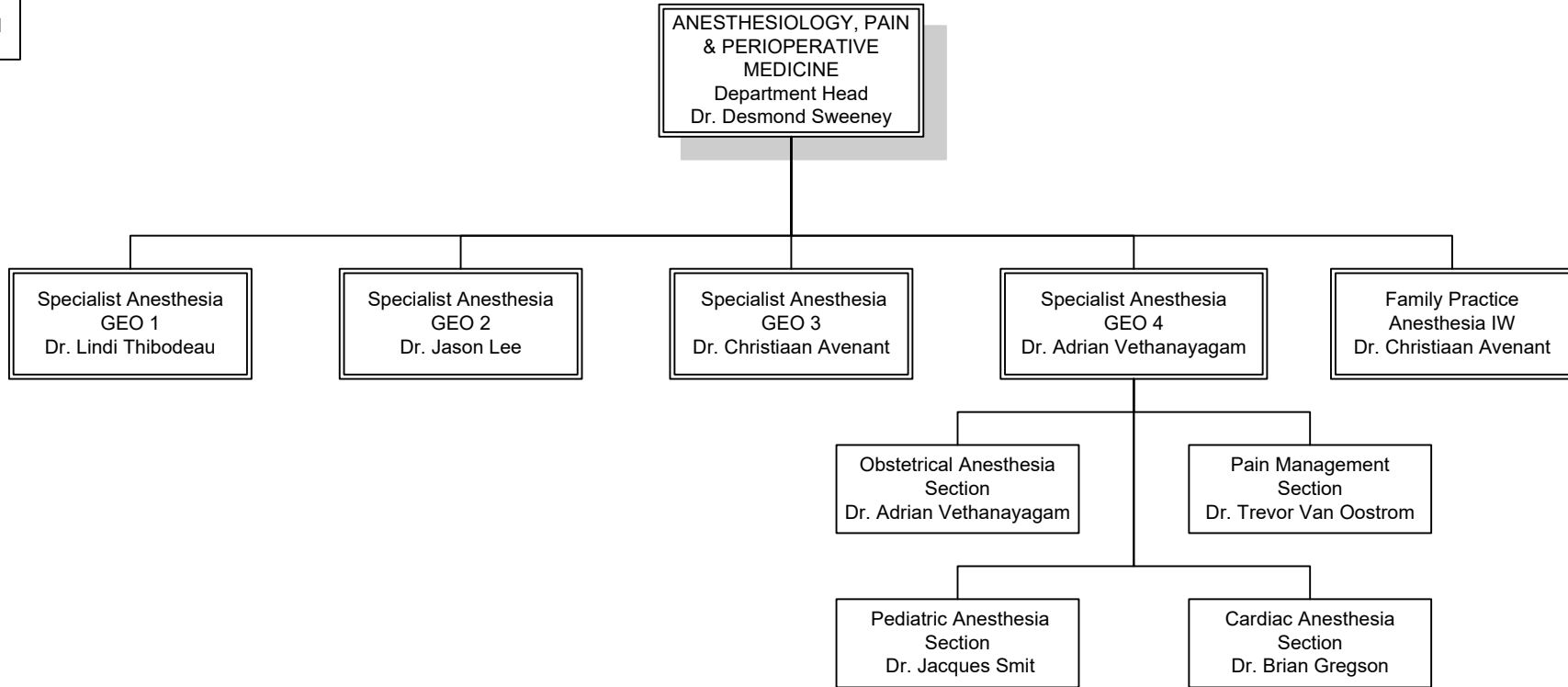


Department Head

Division Head

Section Head

Anesthesiology, Pain and Perioperative Medicine

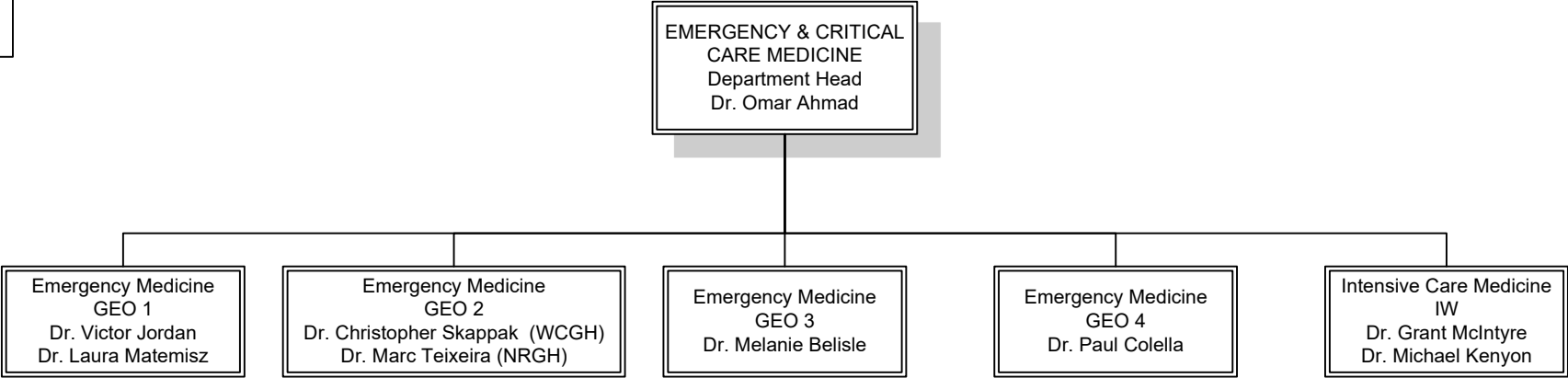


Department
Head

Division Head

Section Head

Emergency & Critical Care Medicine



Chief of Staff

