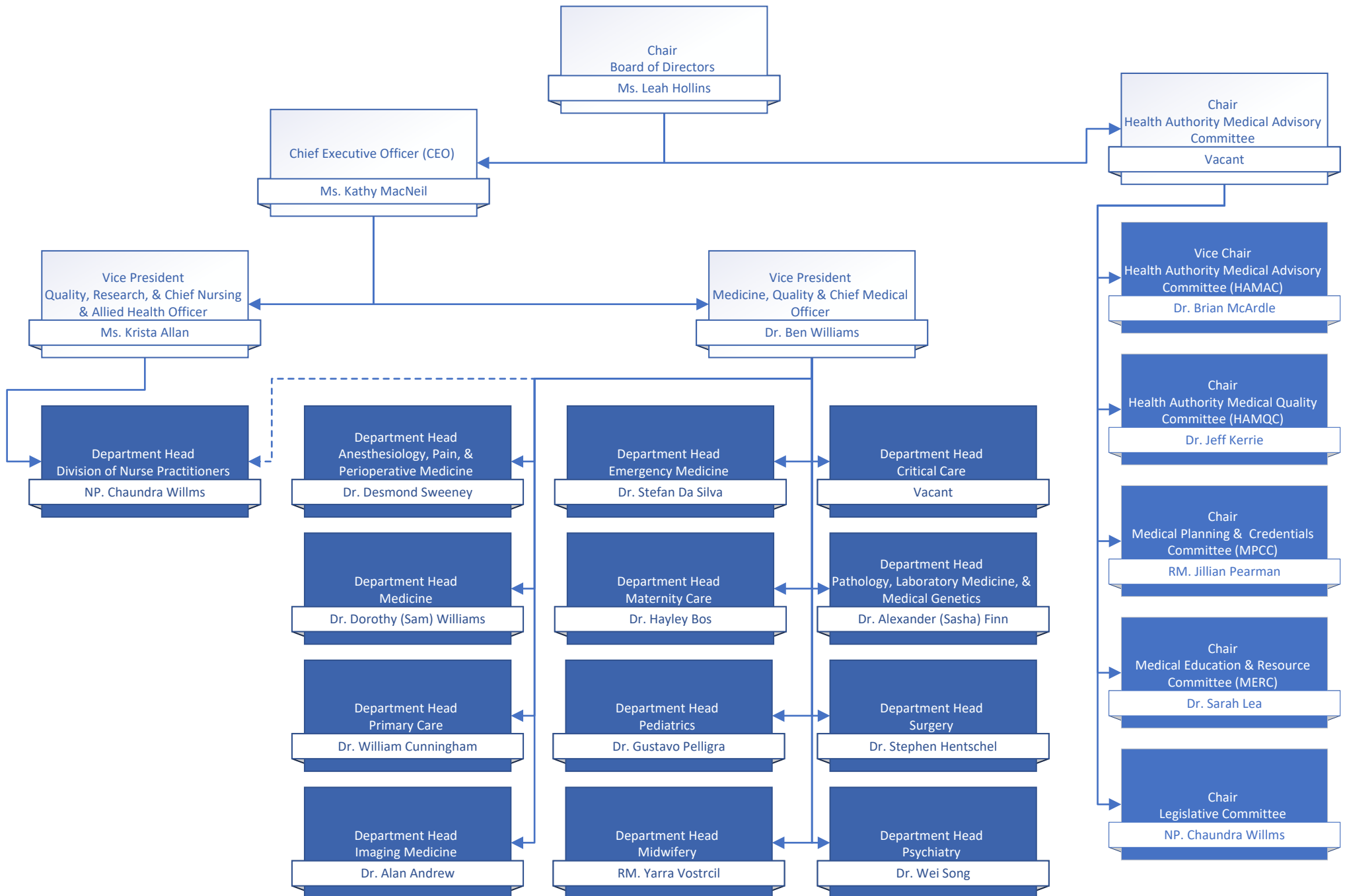


# Medical Staff Leadership Organization Charts

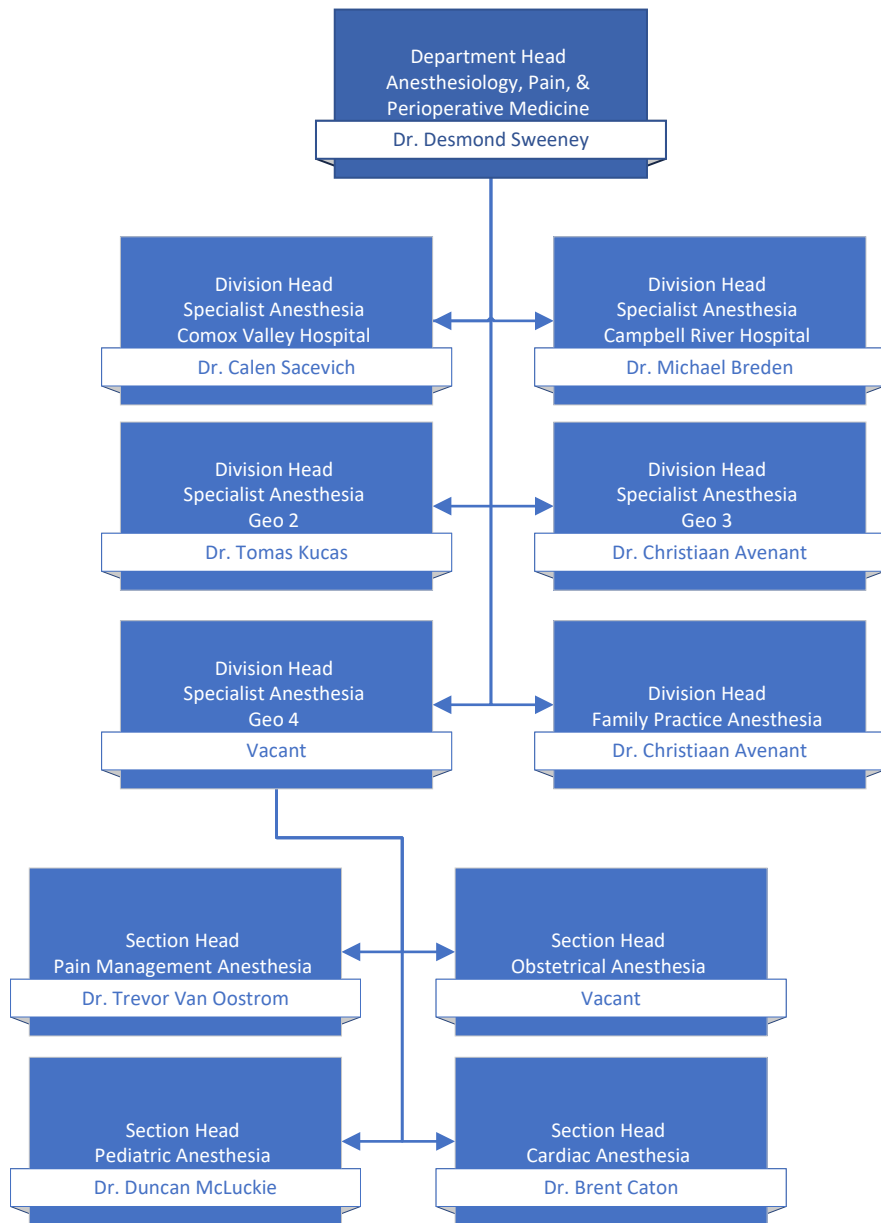


Table of Contents	page #
<b>Medical Staff Governance</b>	<b>2</b>
<b>Departments of: Anesthesiology, Pain, &amp; Perioperative Medicine   Emergency Medicine   Critical Care</b>	<b>3</b>
<b>Departments of: Imaging Medicine   Pathology, Laboratory Medicine, &amp; Medical Genetics   Psychiatry</b>	<b>4</b>
<b>Departments of: Maternity Care   Pediatrics   Midwifery   Division of Nurse Practitioners</b>	<b>5</b>
<b>Department of Medicine</b>	<b>6</b>
<b>Department of Primary Care</b>	<b>7</b>
<b>Department of Surgery</b>	<b>8</b>
<b>Operational Executive Leadership</b>	<b>9</b>
<b>Medical &amp; Academic Affairs</b>	<b>10</b>
<b>Medication Systems &amp; Medical Informatics   Quality &amp; Safety</b>	<b>11</b>
<b>Surgery, Ambulatory Care, &amp; Cancer Care Strategy</b>	<b>12</b>
<b>Mental Health &amp; Substance Use   Addiction Medicine</b>	<b>13</b>
<b>Comox Valley, Campbell River, Port Alberni &amp; North Island/Long Term Care &amp; Assisted Living</b>	<b>14</b>
<b>Comox Valley Hospital   Campbell River Hospital   West Coast General Hospital</b>	<b>15</b>
<b>Long Term Care Geo 1 &amp; 2</b>	<b>16</b>
<b>Long Term Care Geo 3 &amp; 4</b>	<b>17</b>
<b>Nanaimo/Imaging Medicine &amp; Laboratory</b>	<b>18</b>
<b>Pathology, Laboratory Medicine, &amp; Medical Genetics Operations   Imaging Medicine Operations</b>	<b>19</b>
<b>Cowichan Valley</b>	<b>20</b>
<b>Greater Victoria Acute Care/Pediatrics, Midwifery, &amp; Maternal Health</b>	<b>21</b>
<b>Royal Jubilee Hospital   Victoria General Hospital</b>	<b>22</b>
<b>Pediatrics Operations   Midwifery Operations   Maternal Health Operations</b>	<b>23</b>
<b>Saanich Peninsula &amp; Gulf Islands/Seniors &amp; Primary Care</b>	<b>24</b>
<b>Palliative &amp; End of Life Care   Seniors Health   Urgent Primary Care Centres</b>	<b>25</b>

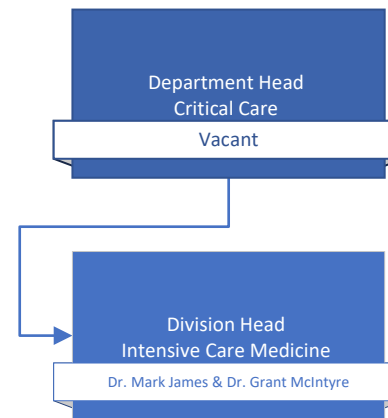
## Medical Staff Governance



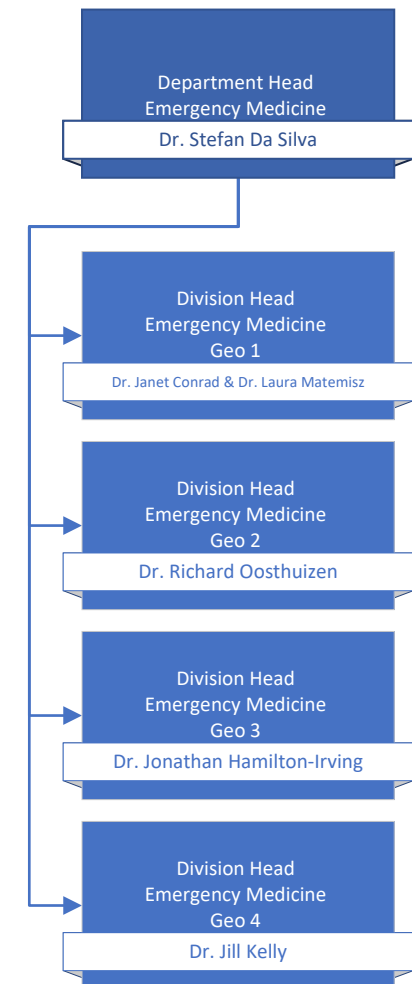
## Department of Anesthesiology, Pain, & Perioperative Medicine



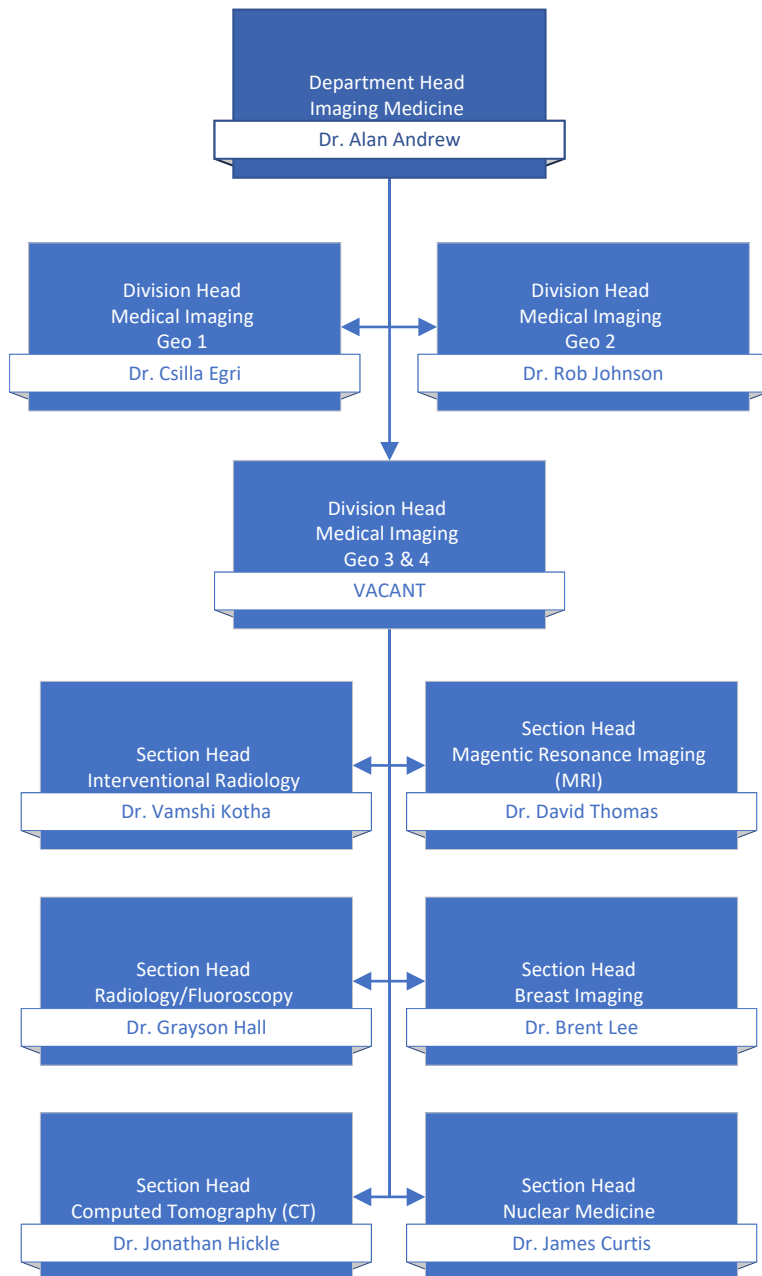
## Department of Critical Care



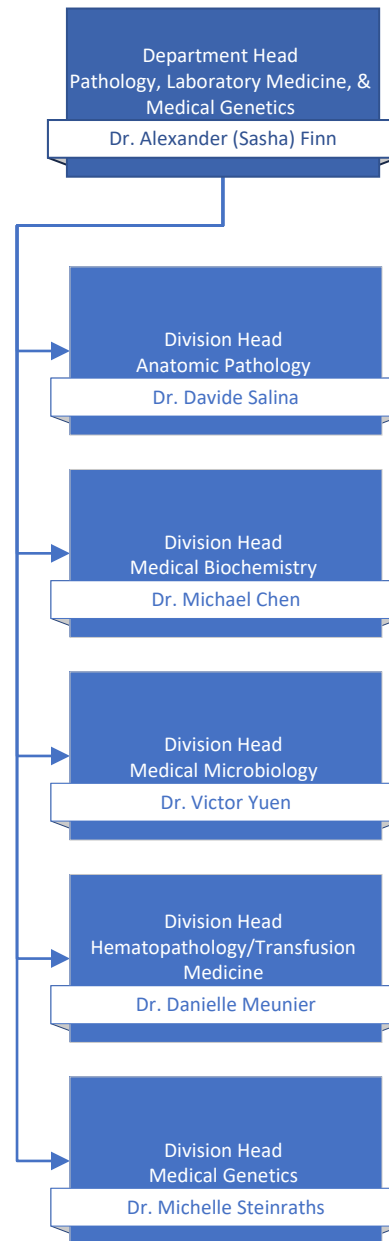
## Department of Emergency Medicine



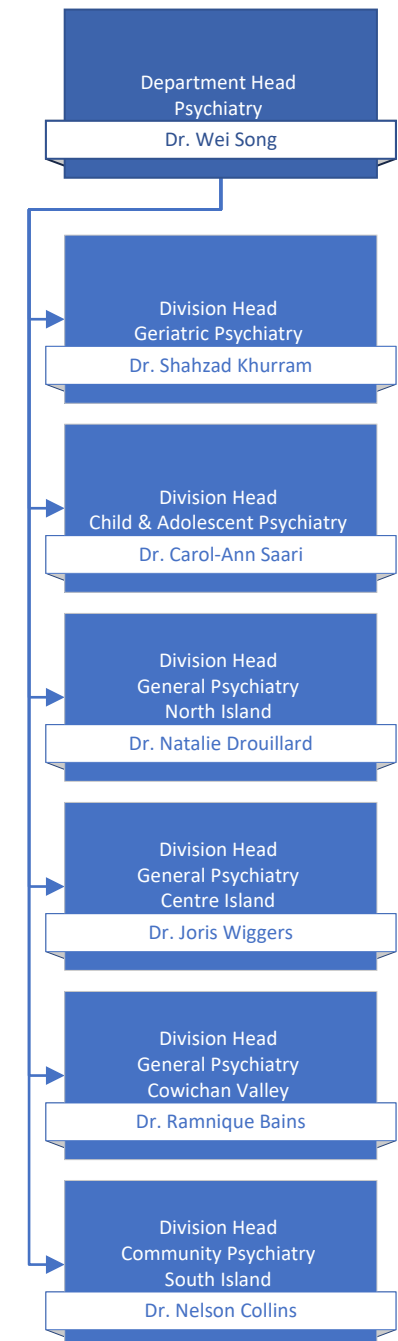
## Department of Imaging Medicine



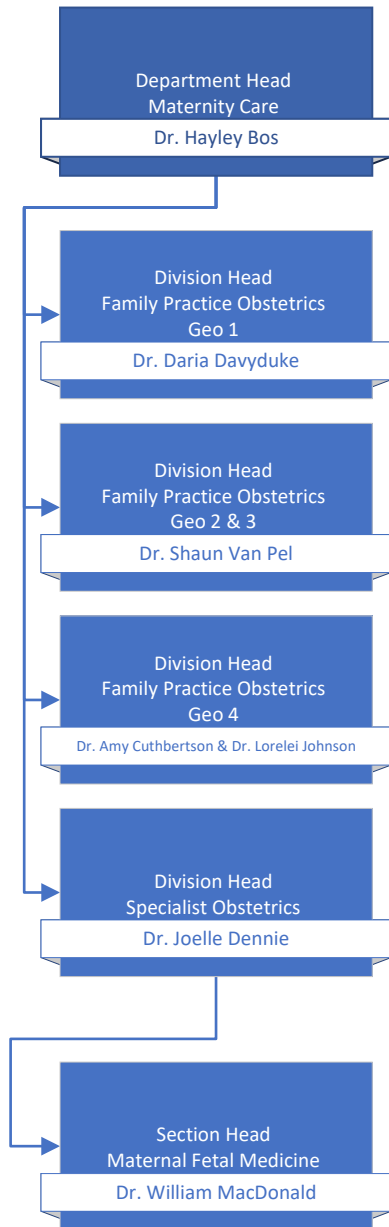
## Department of Pathology, Laboratory Medicine, & Medical Genetics



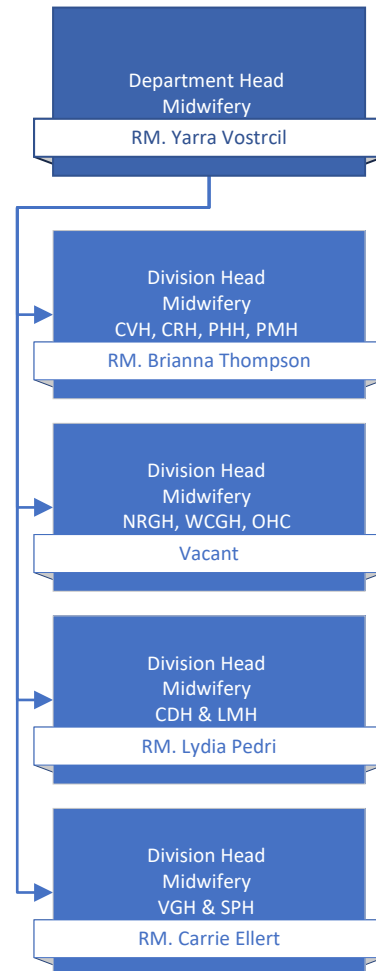
## Department of Psychiatry



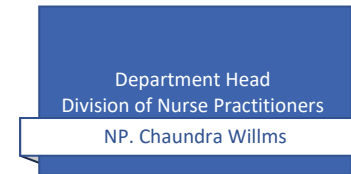
## Department of Maternity Care



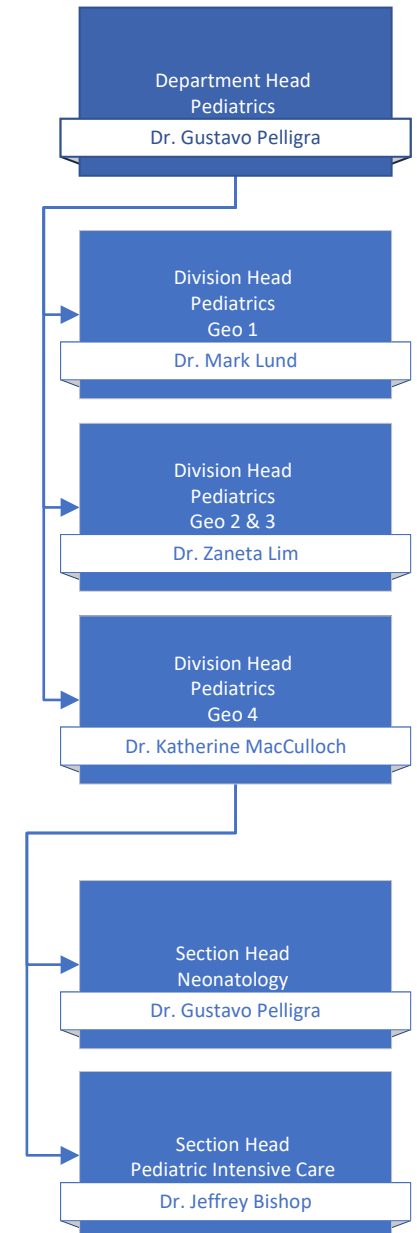
## Department of Midwifery



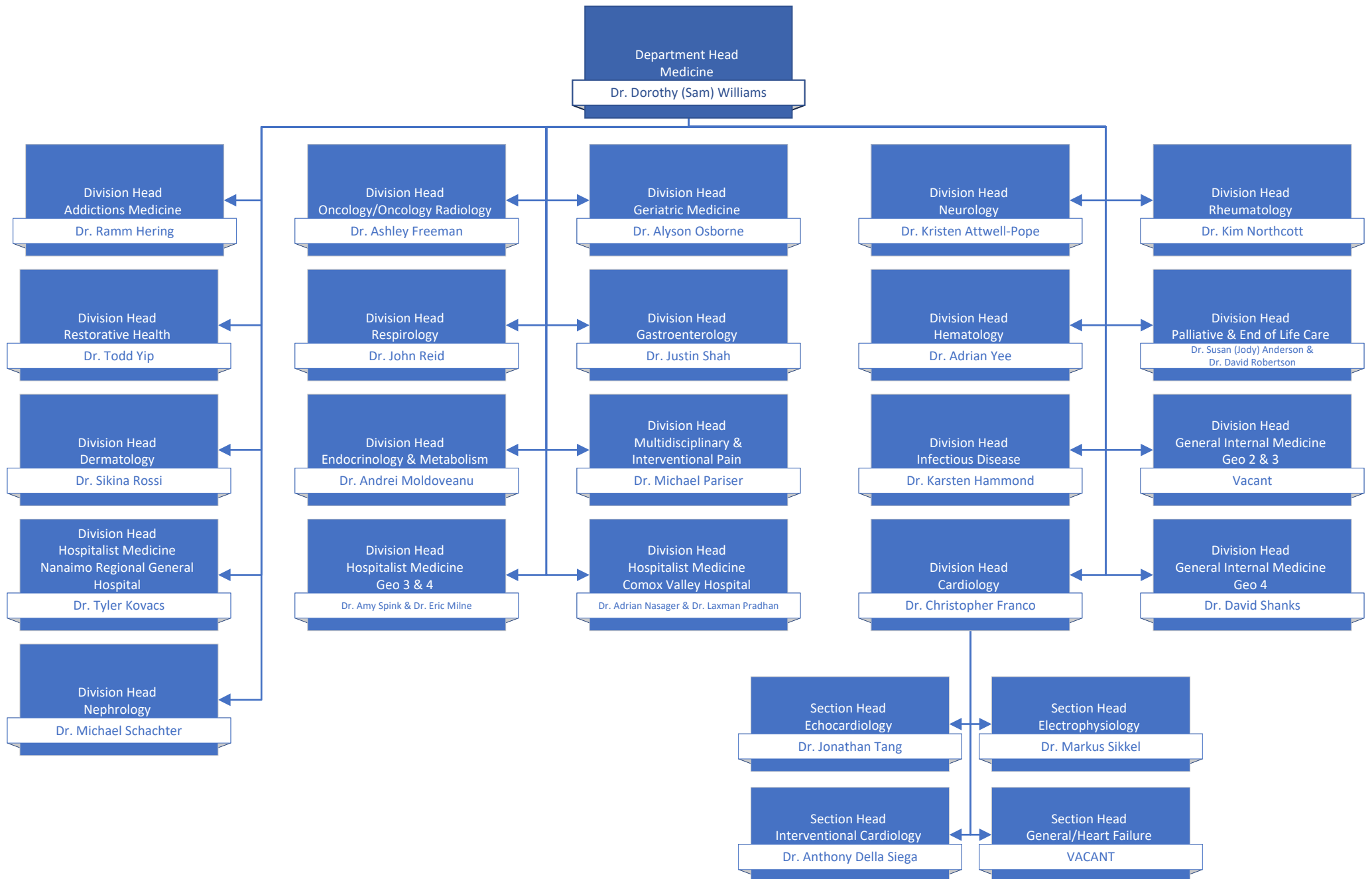
## Department of Nurse Practitioners



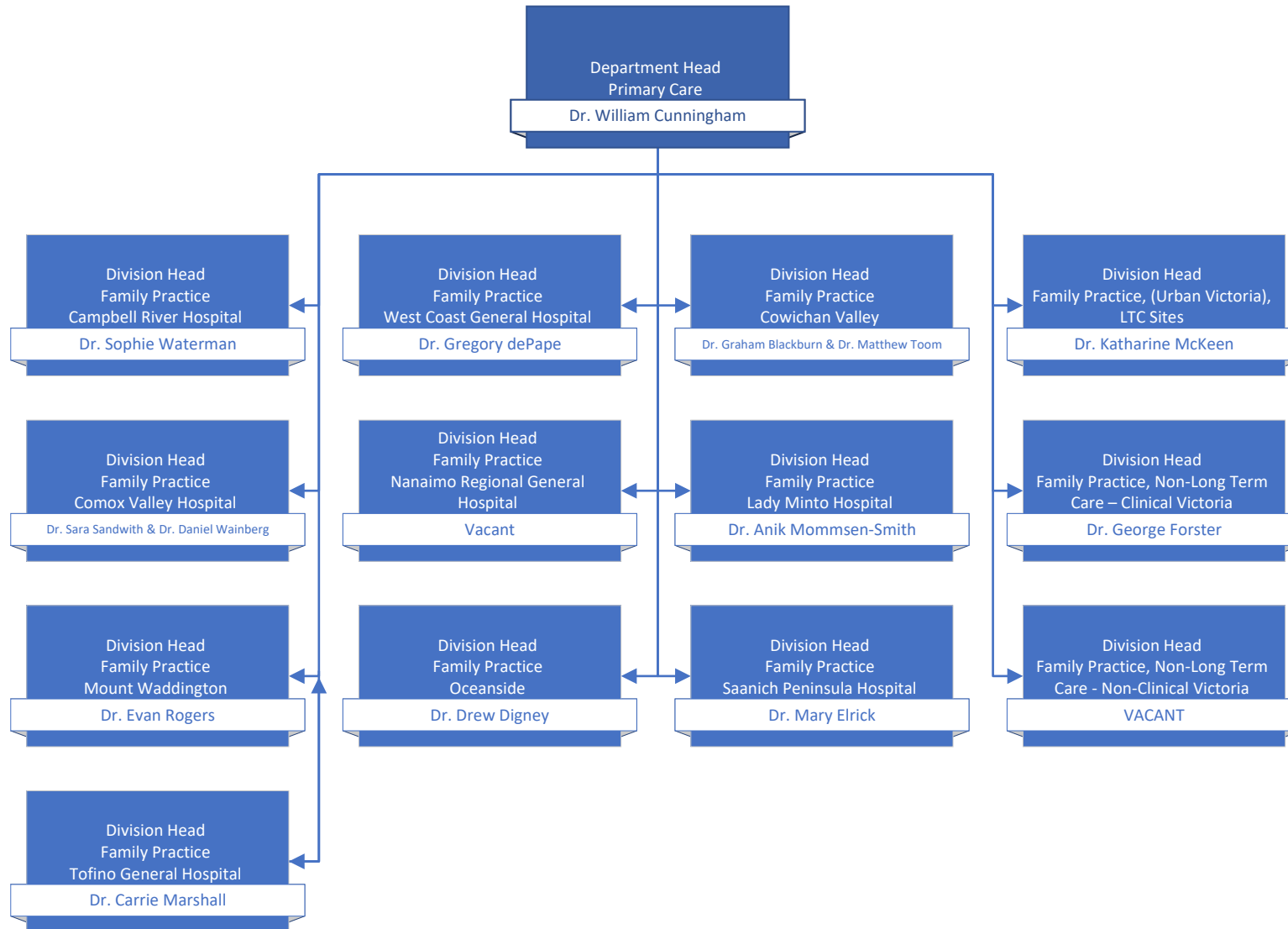
## Department of Pediatrics



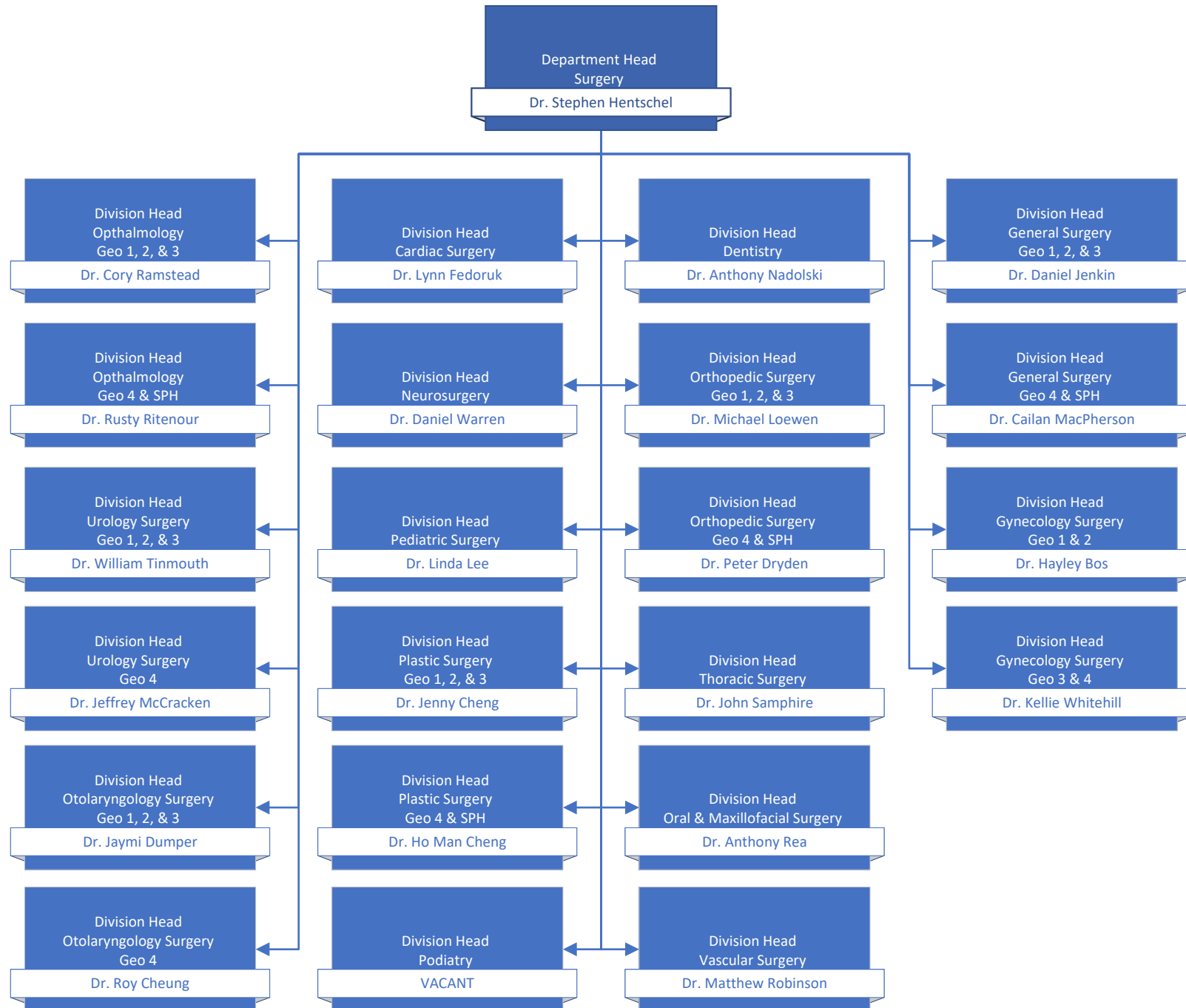
# Department of Medicine



## Department of Primary Care

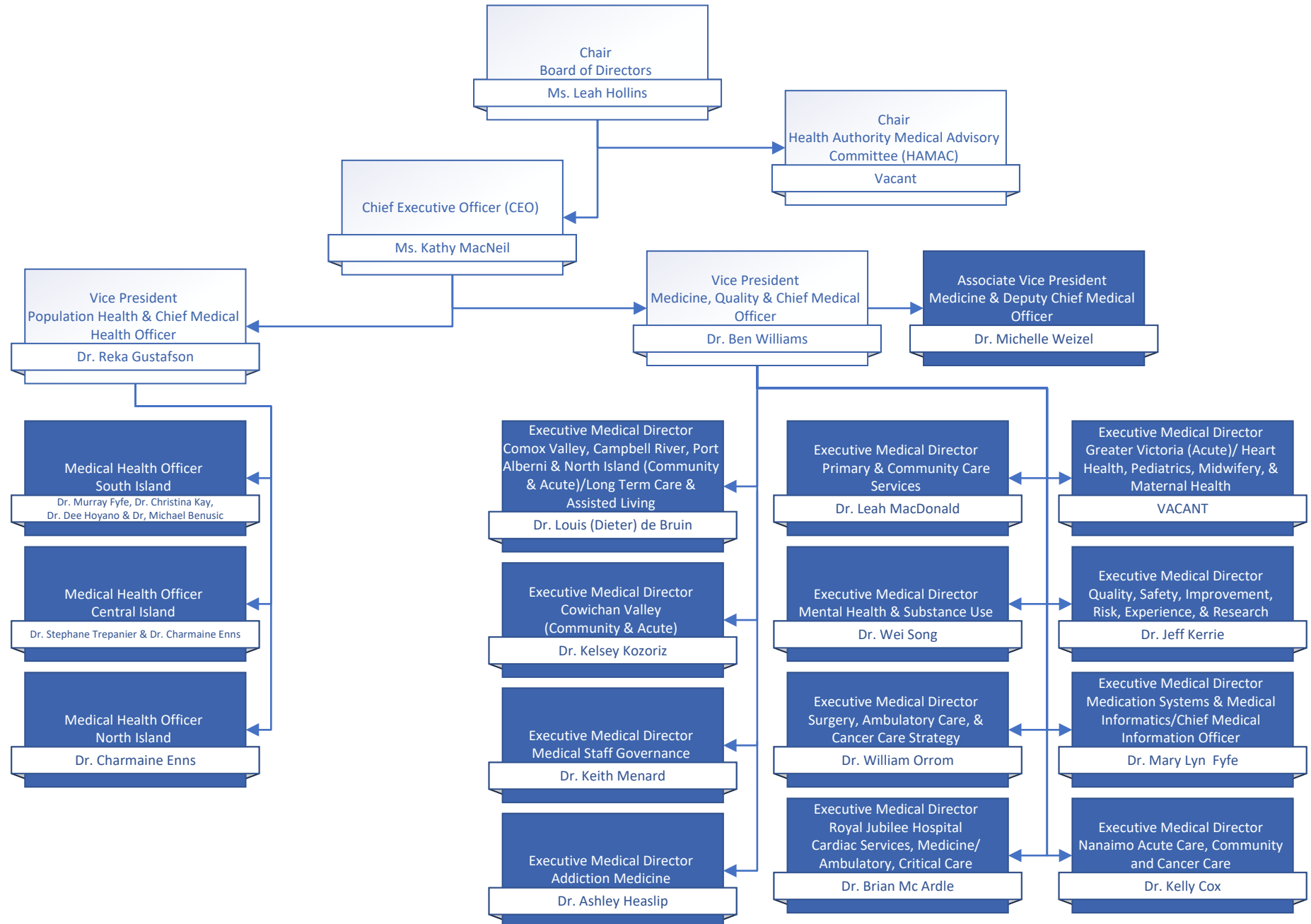


## Department of Surgery

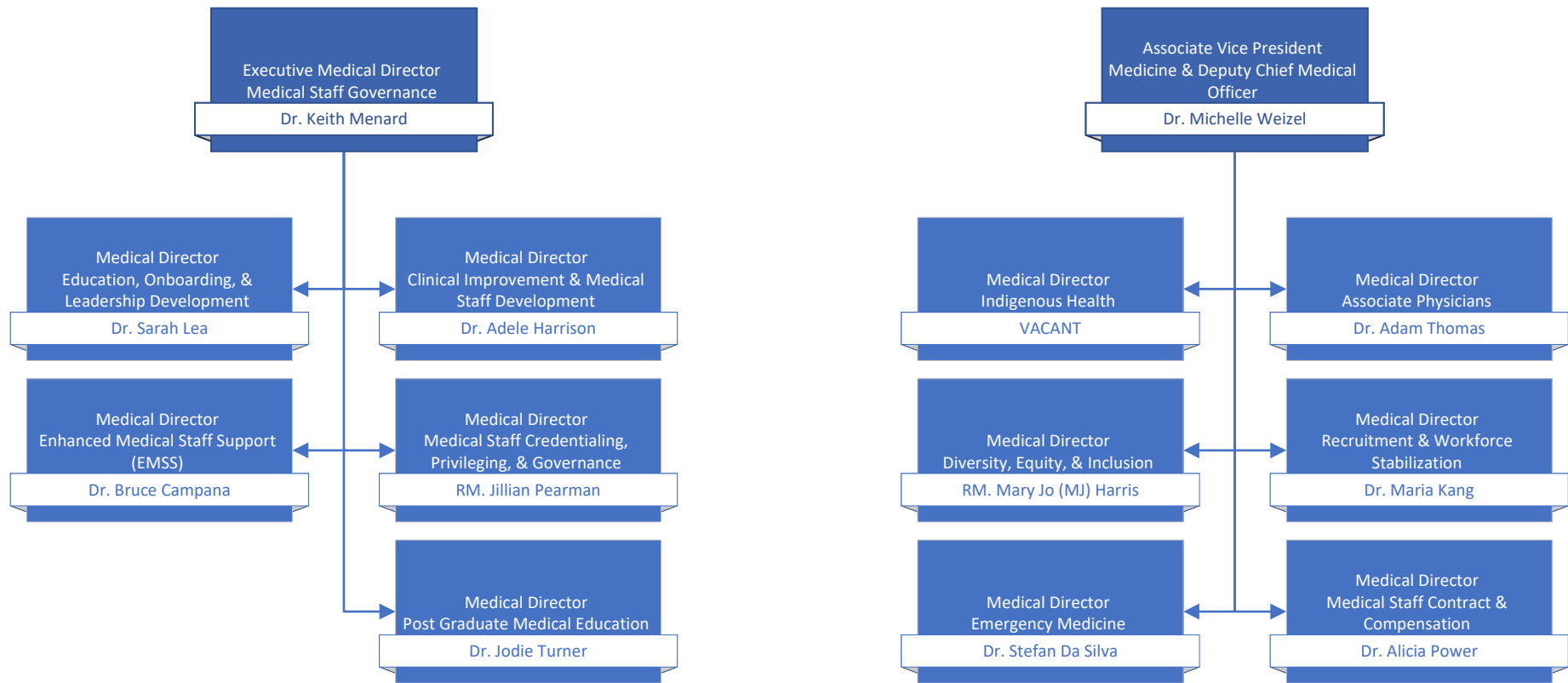




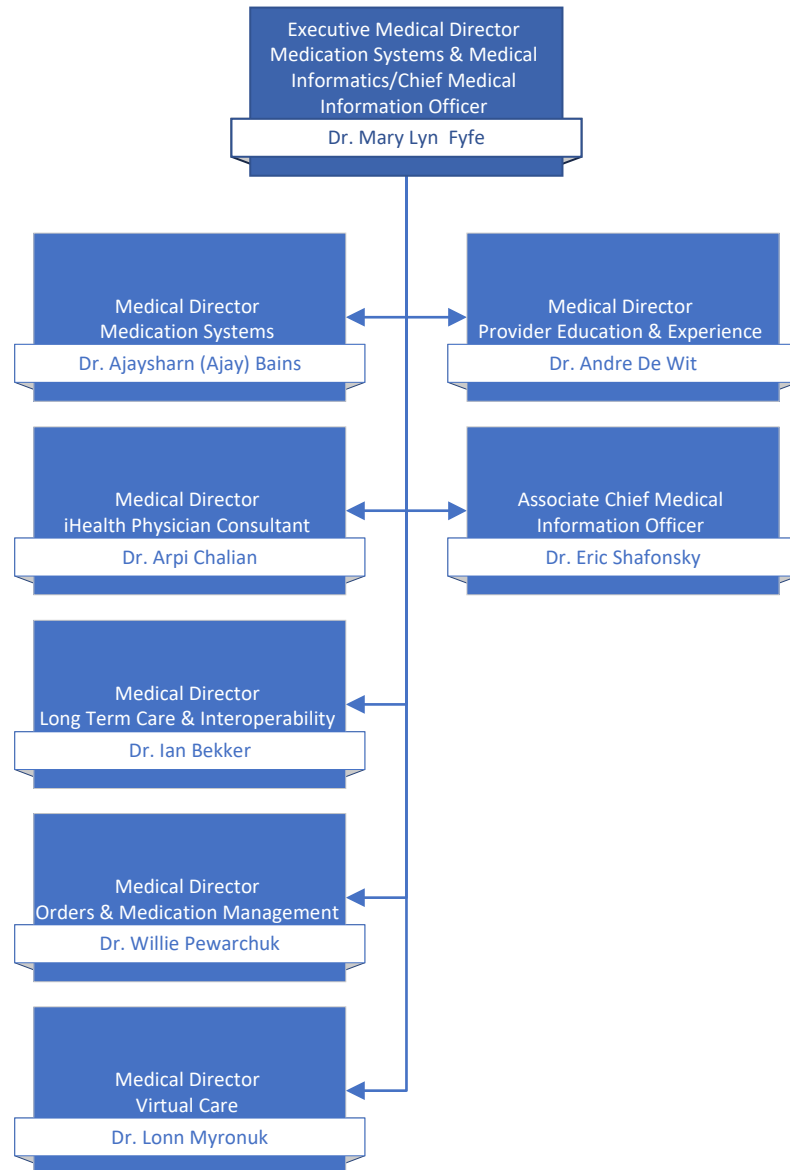
## Operational Executive Leadership



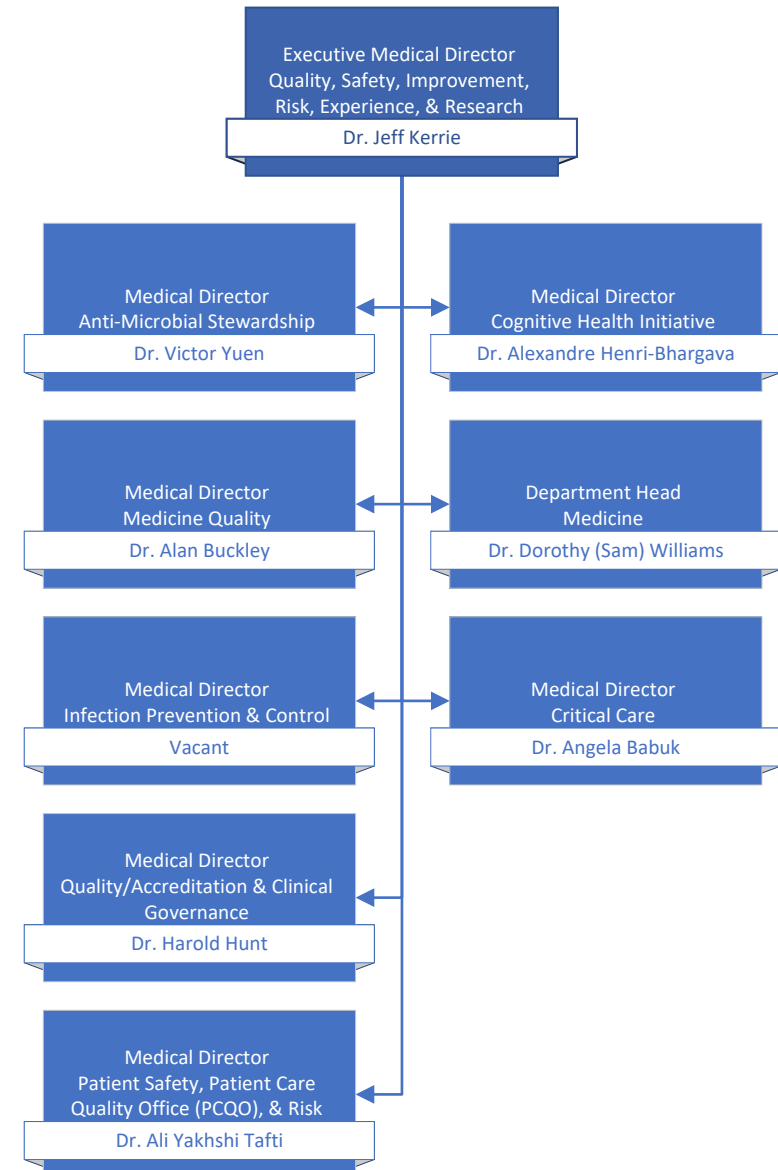
## Medical & Academic Affairs



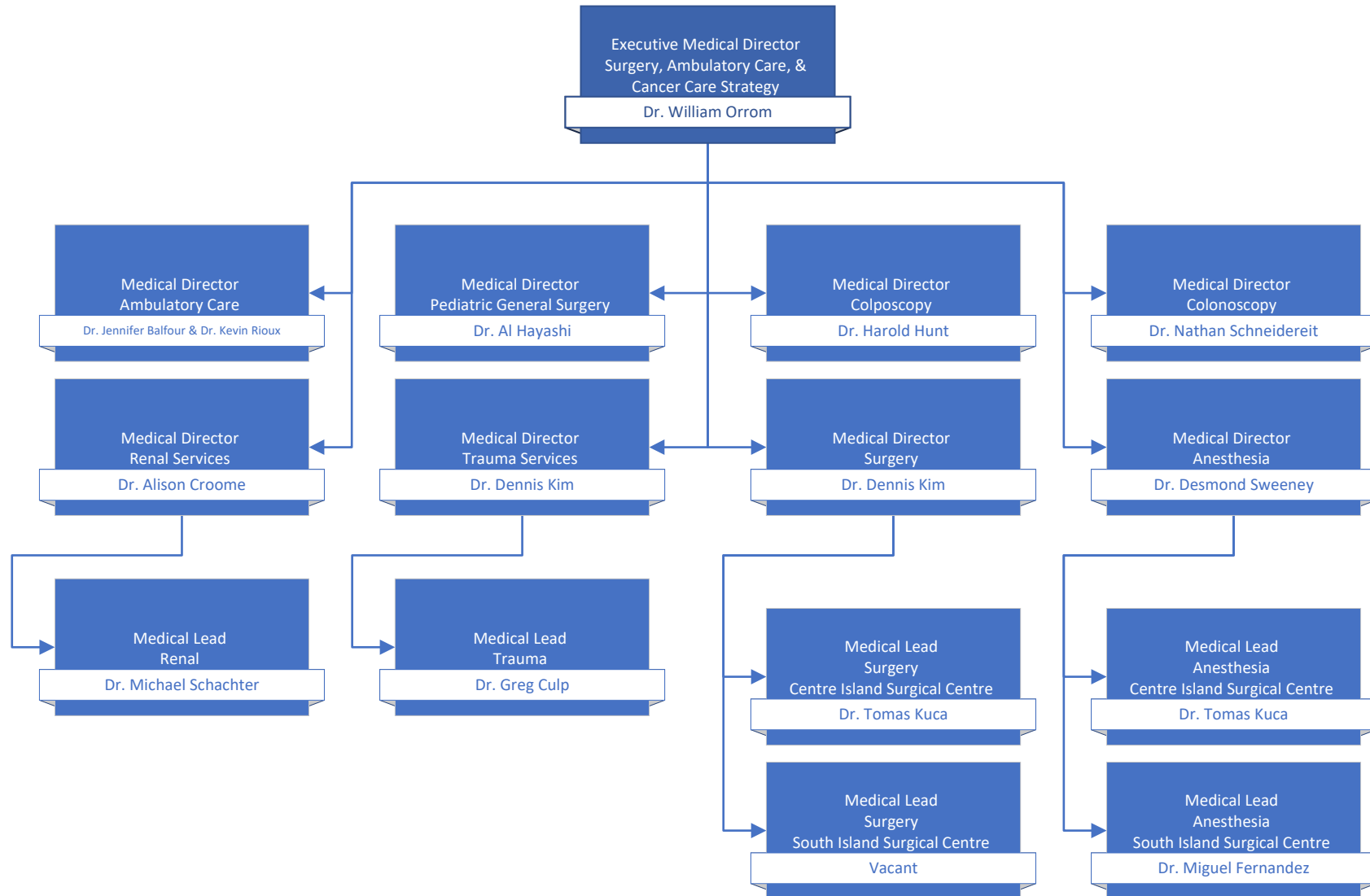
## Medication Systems & Medical Informatics



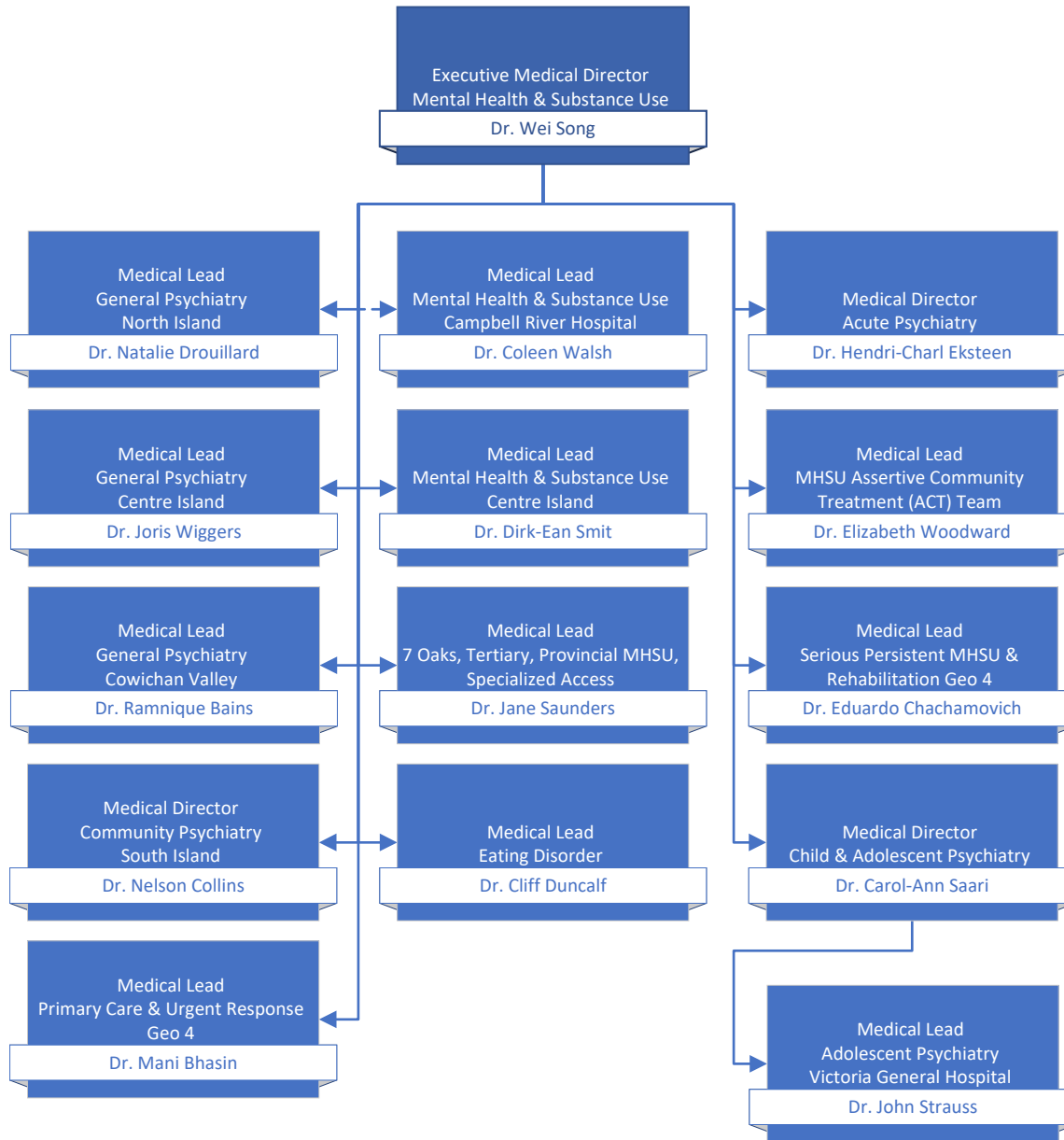
## Quality & Safety



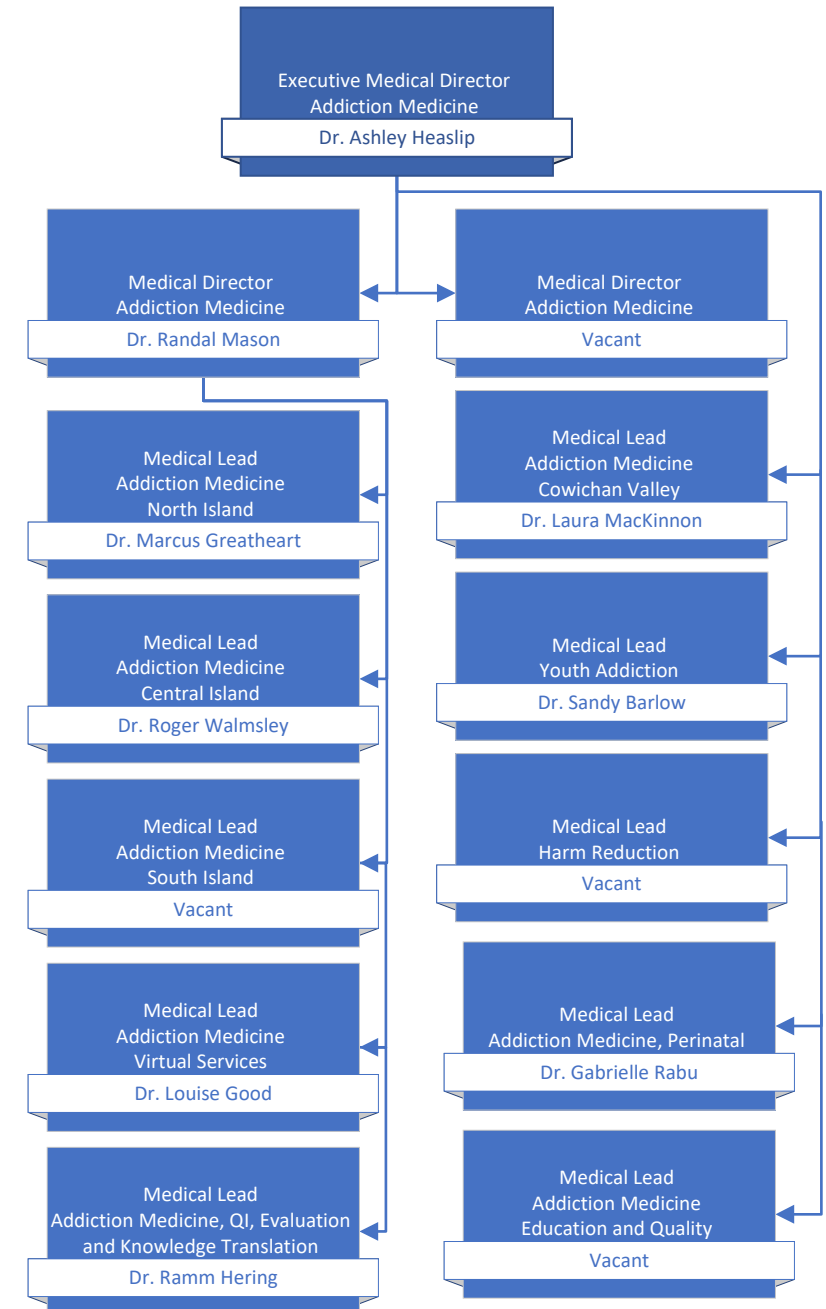
## Surgery, Ambulatory Care, & Cancer Care Strategy



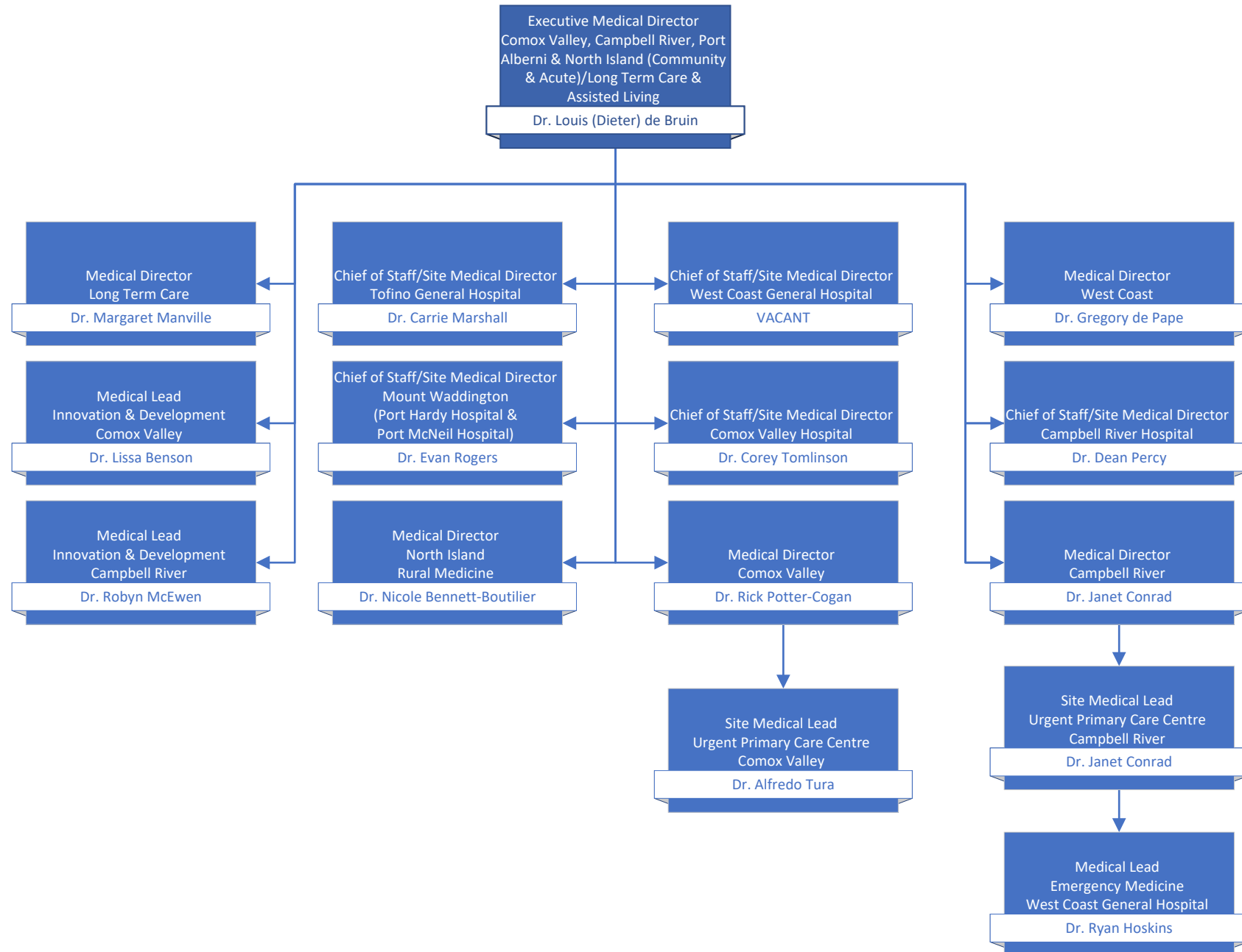
## Mental Health & Substance Use



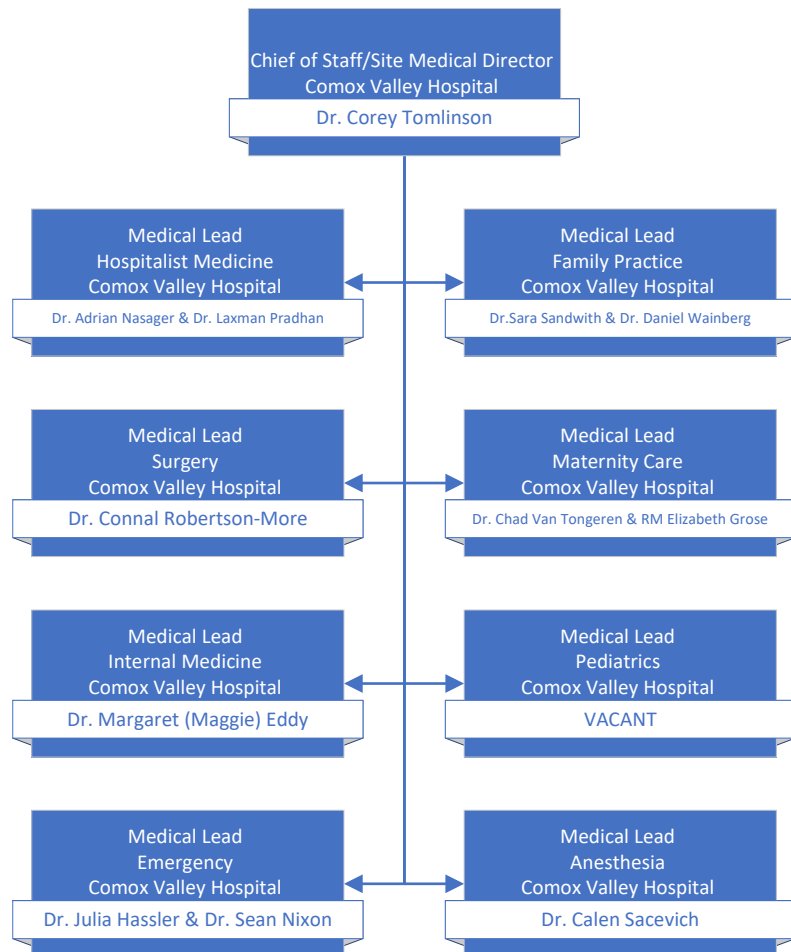
## Addiction Medicine



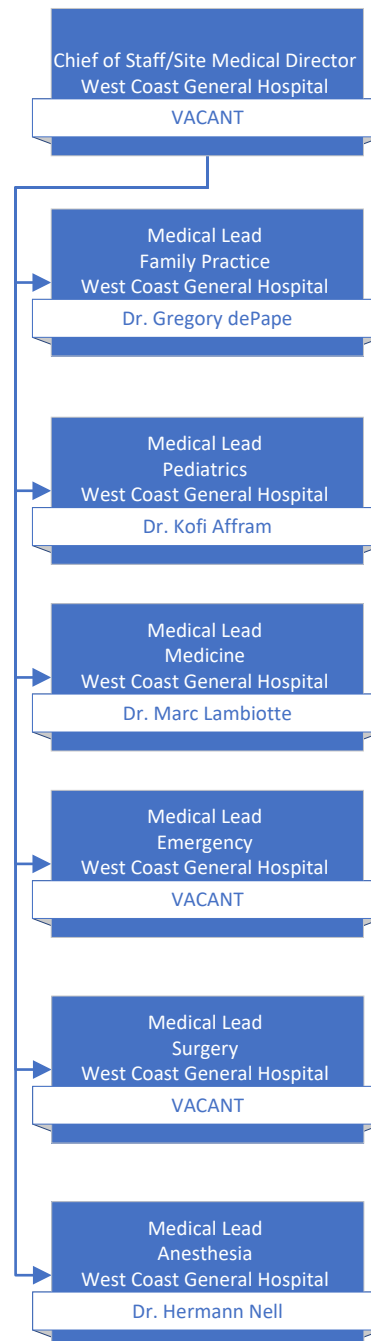
# Comox Valley, Campbell River, Port Alberni & North Island/Long Term Care & Assisted Living



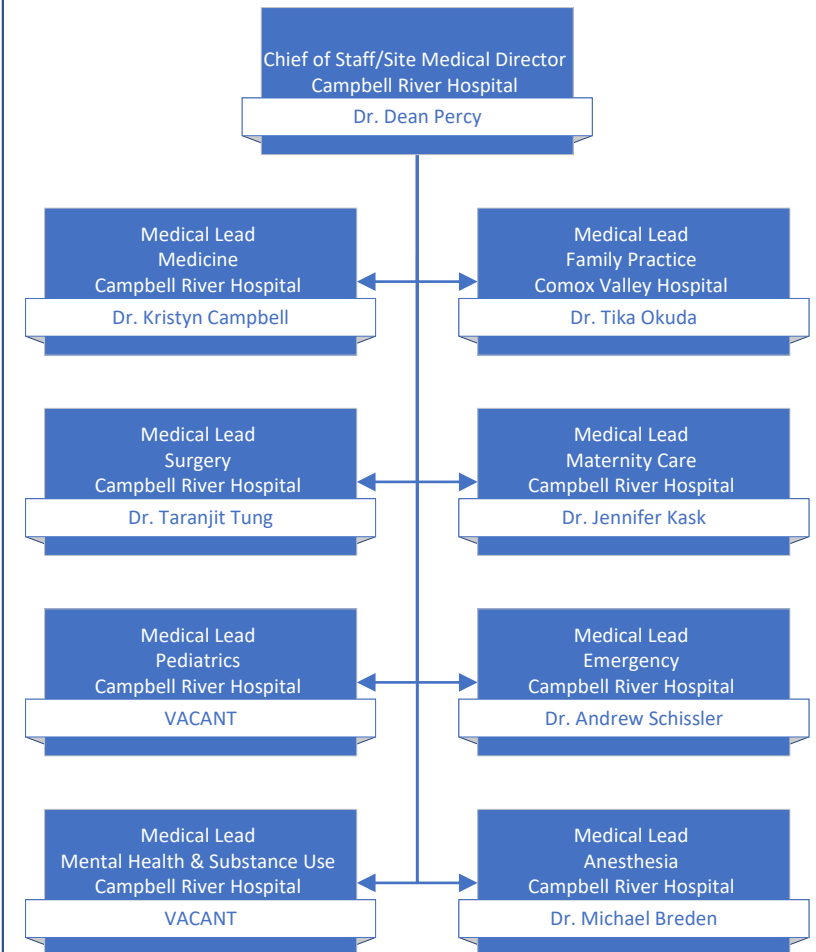
## Comox Valley Hospital



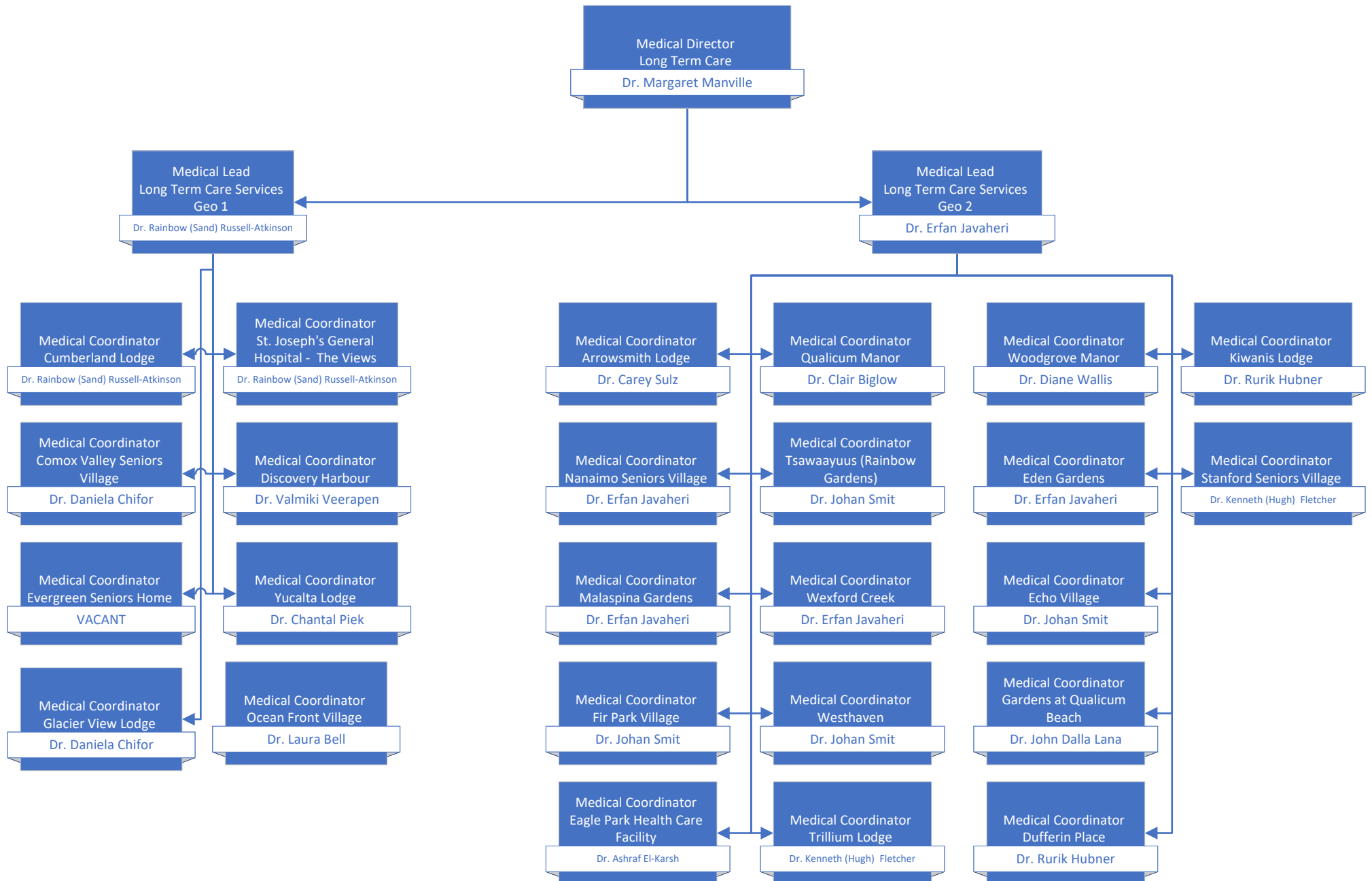
## West Coast General Hospital



## Campbell River Hospital

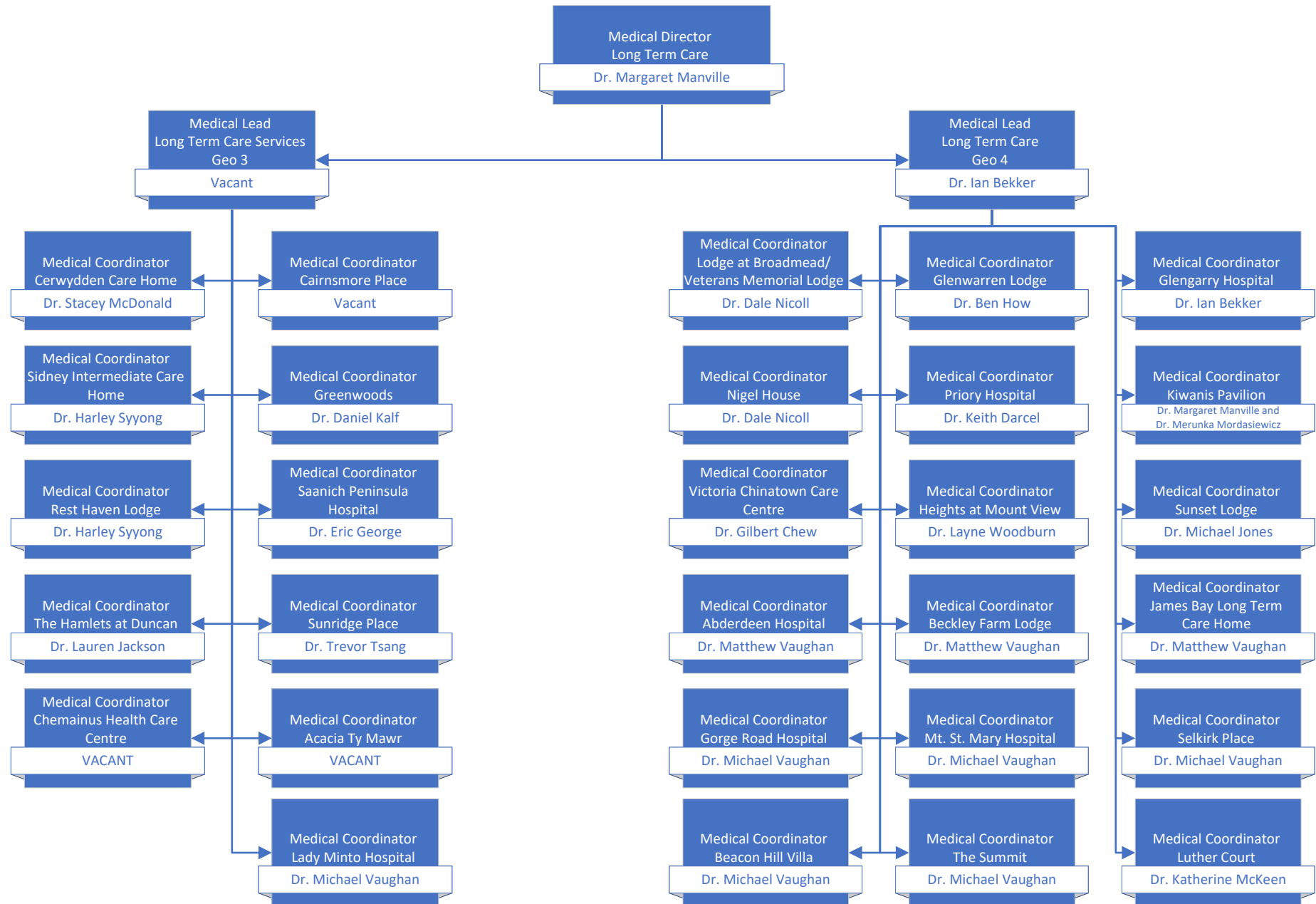


## Long Term Care (Geo 1 & 2)

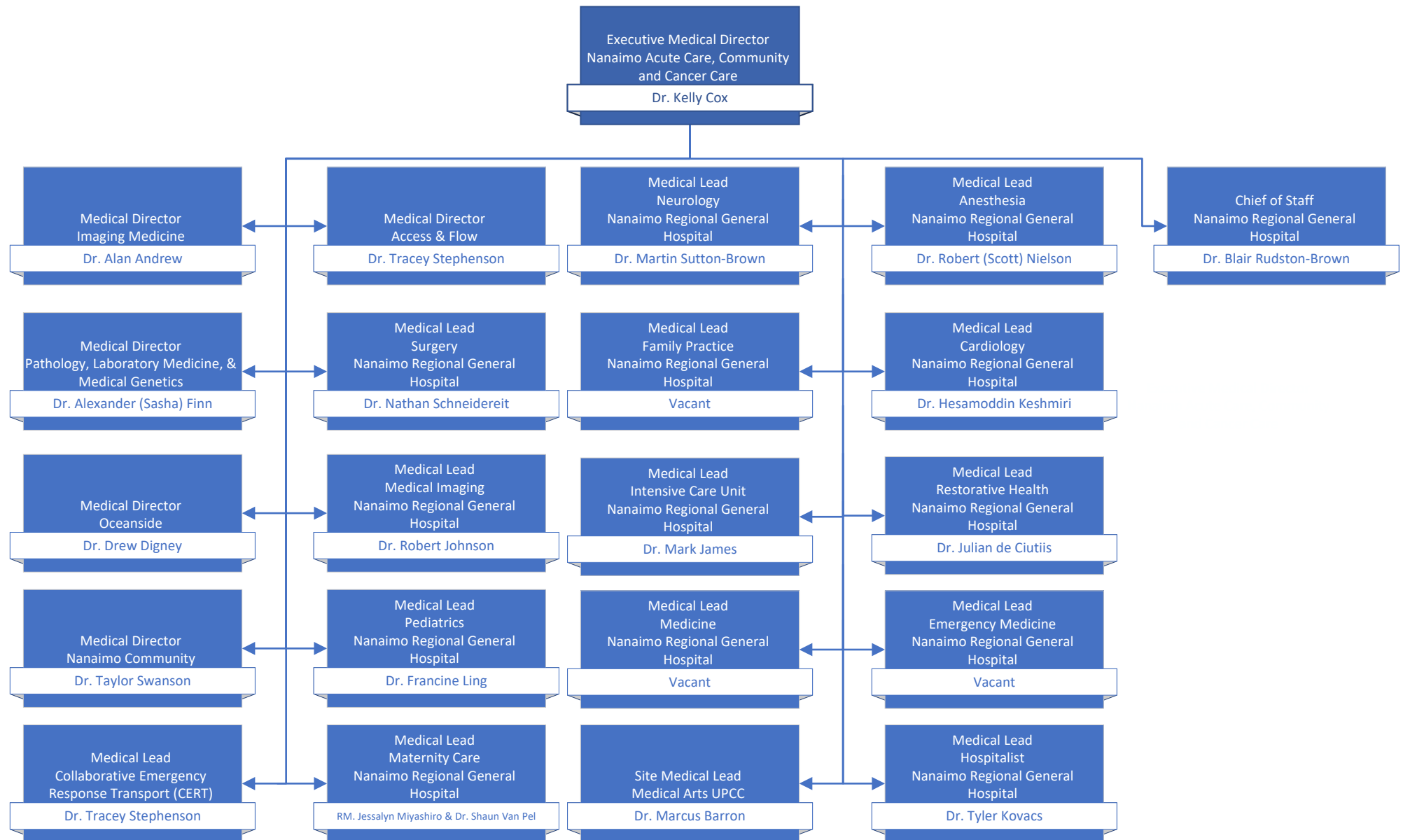




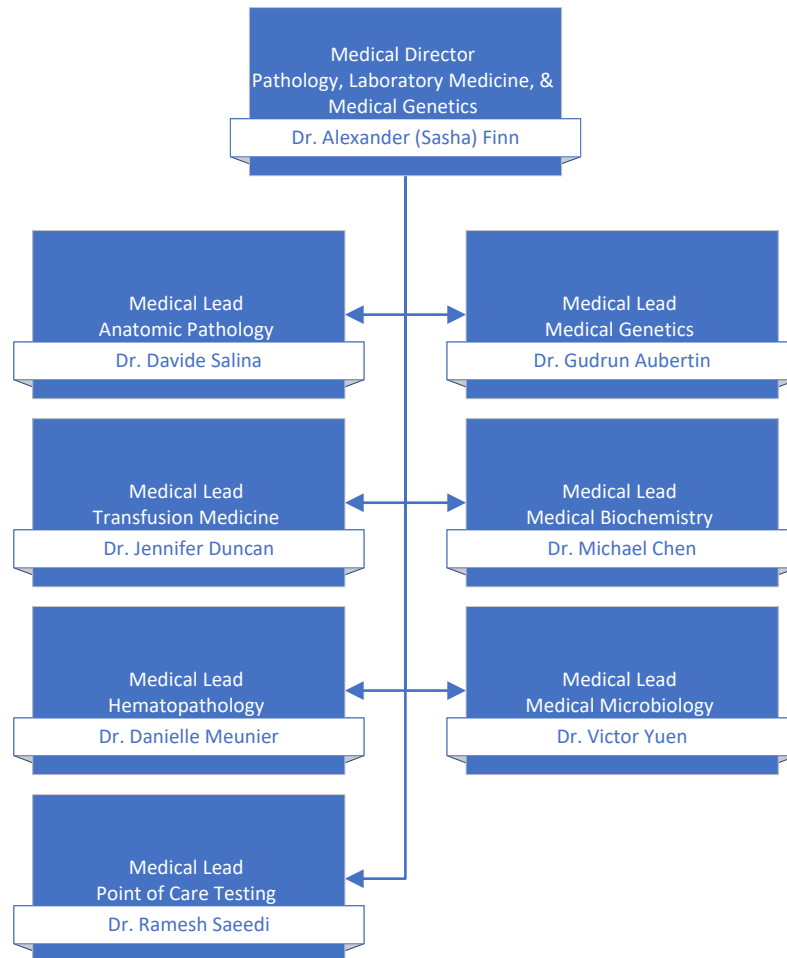
## Long Term Care (Geo 3 & 4)



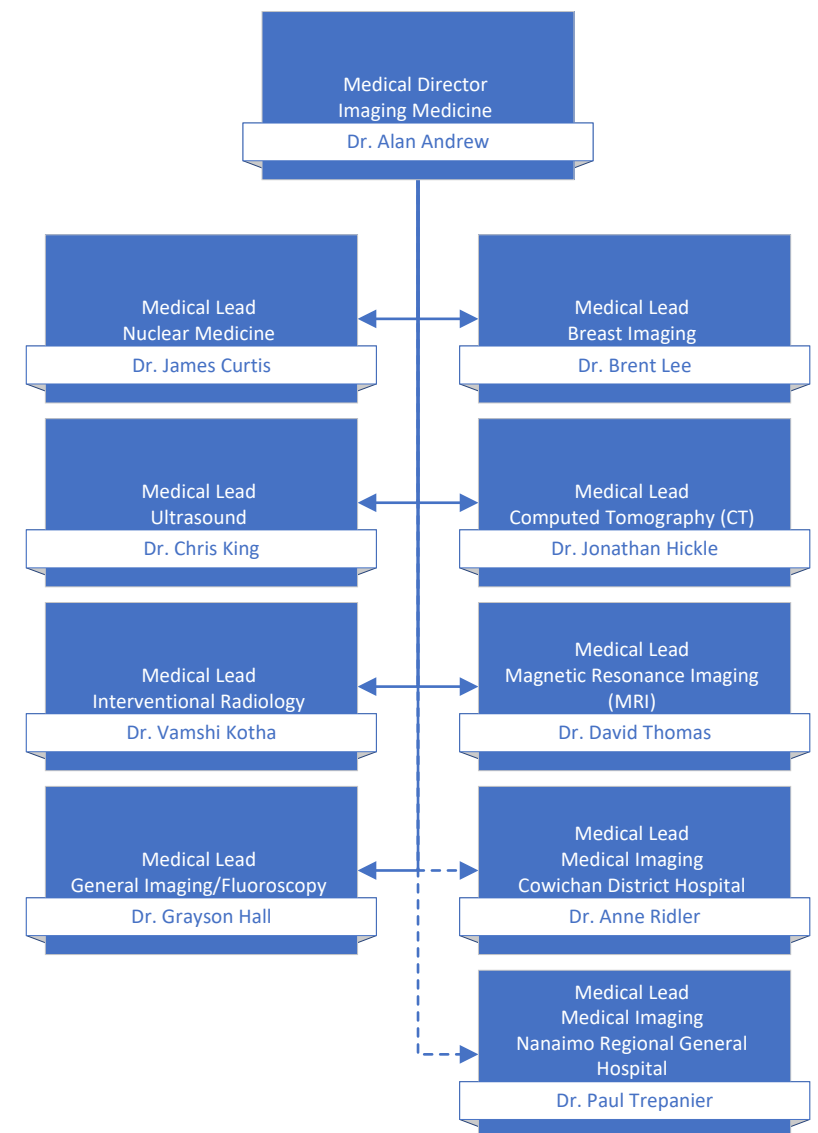
## Nanaimo/ Medical Imaging & Laboratory Medicine



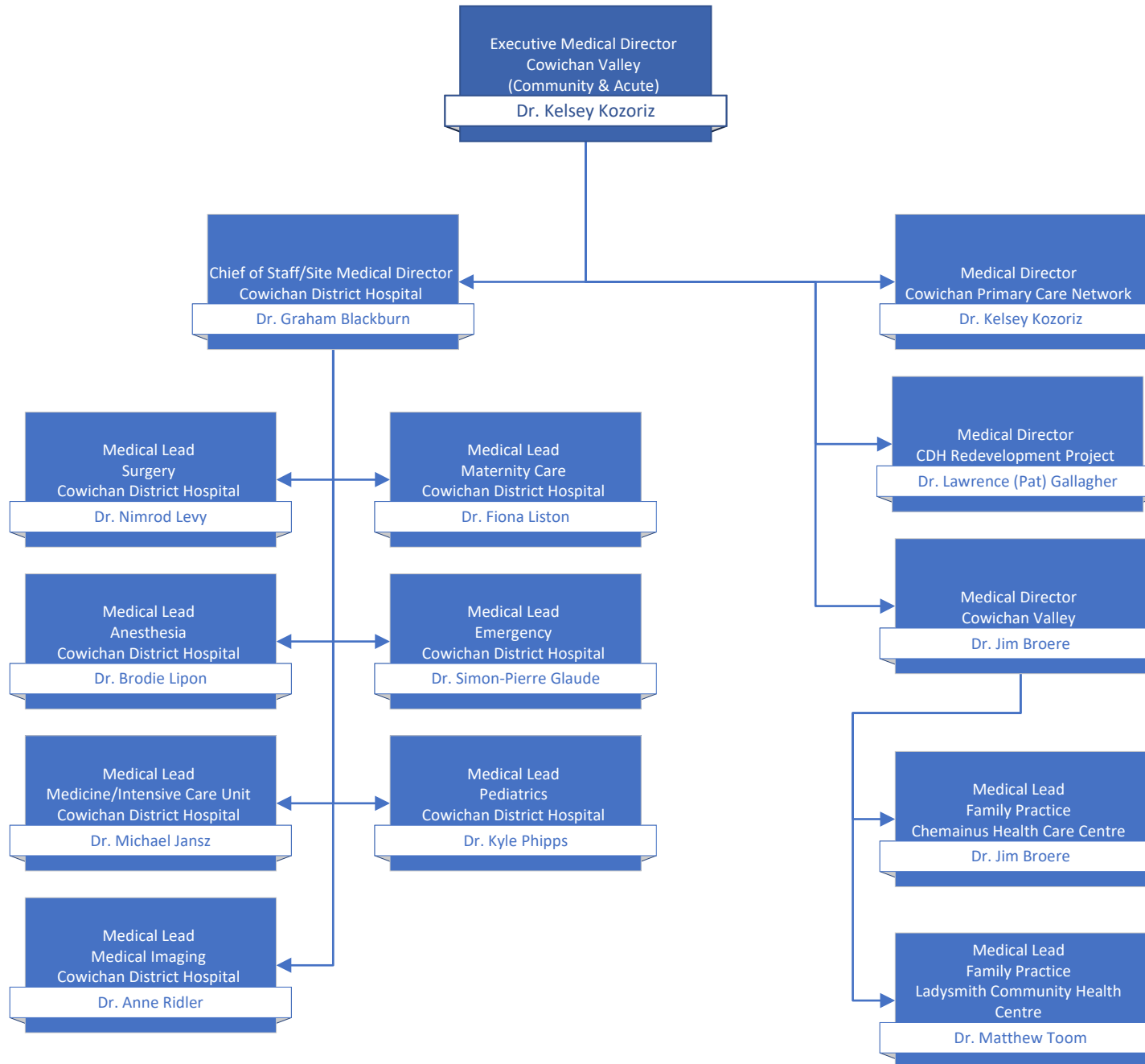
## Pathology, Laboratory Medicine, & Medical Genetics Operations



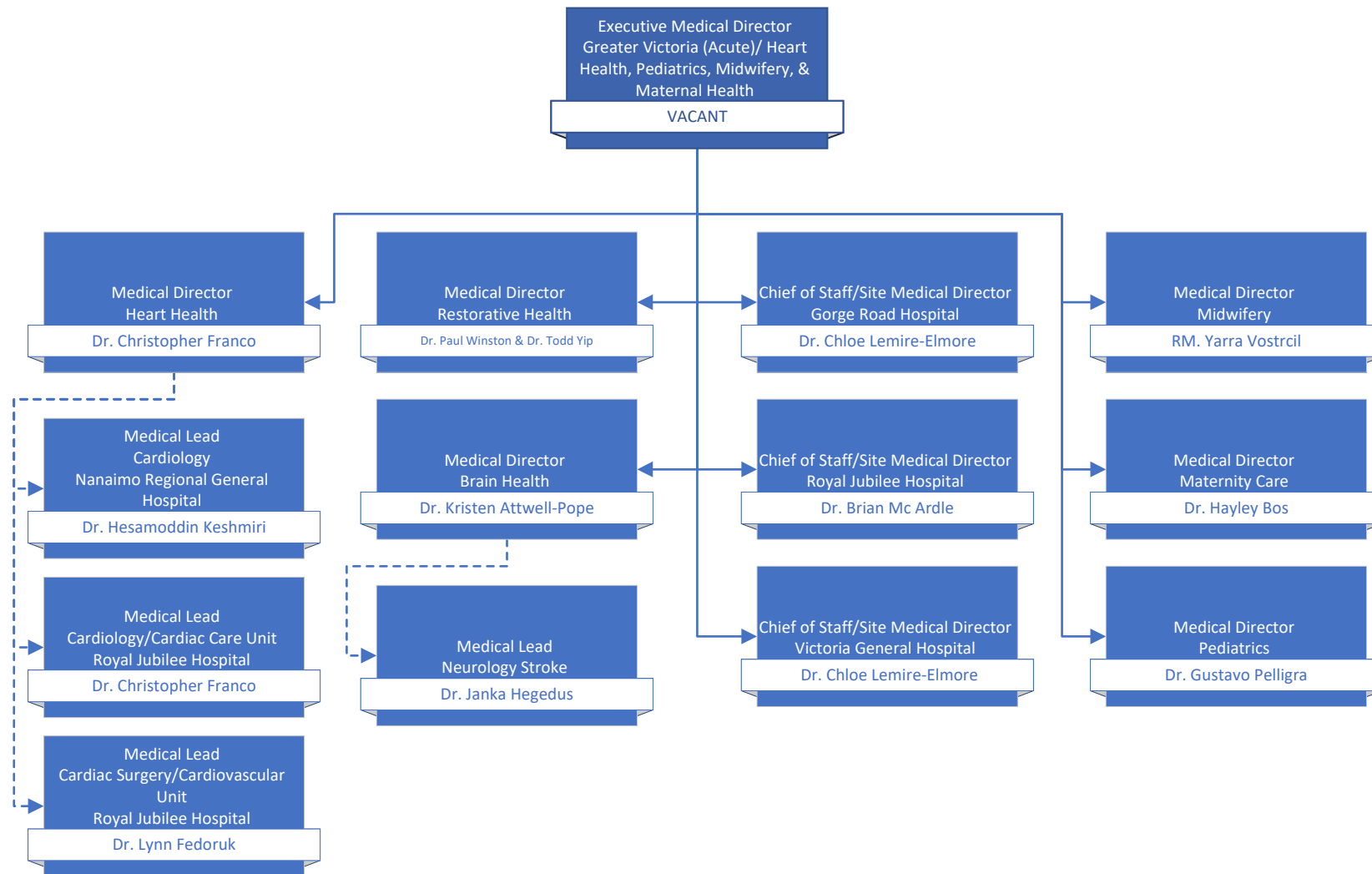
## Imaging Medicine Operations



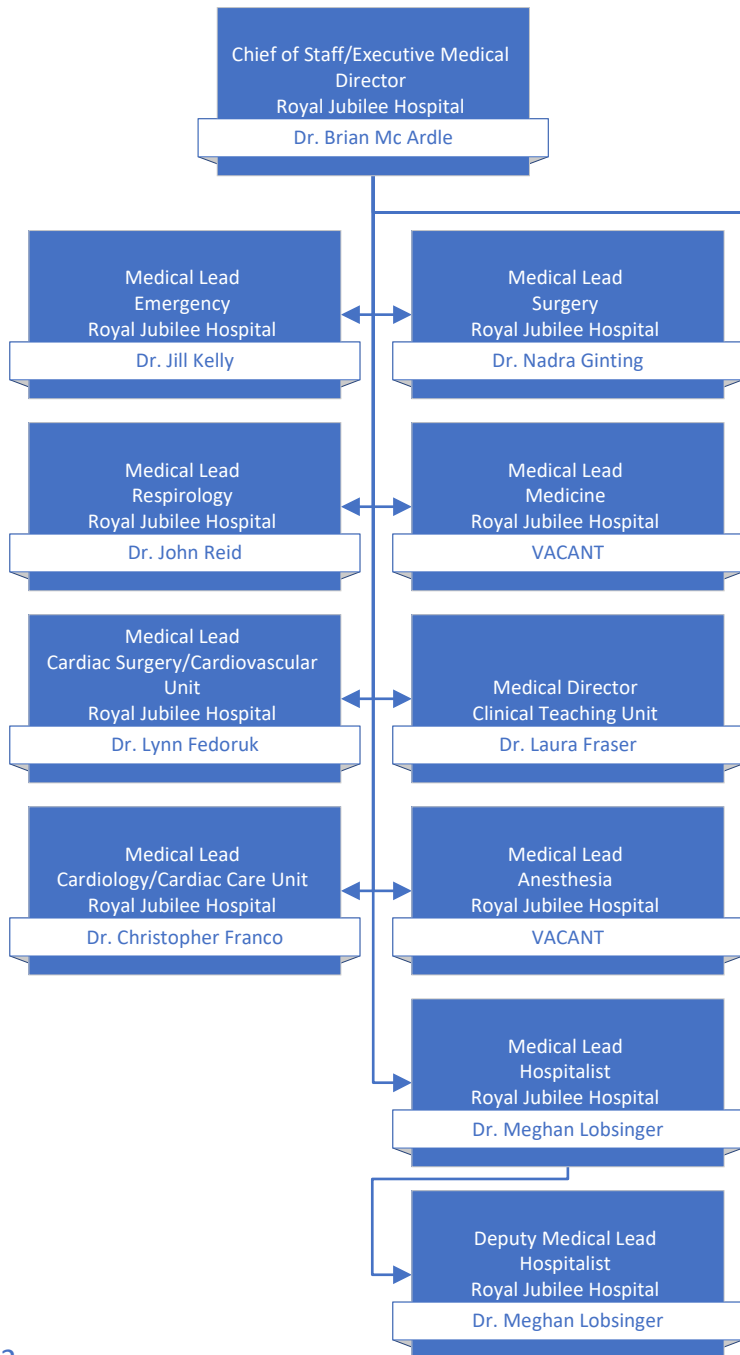
## Cowichan Valley



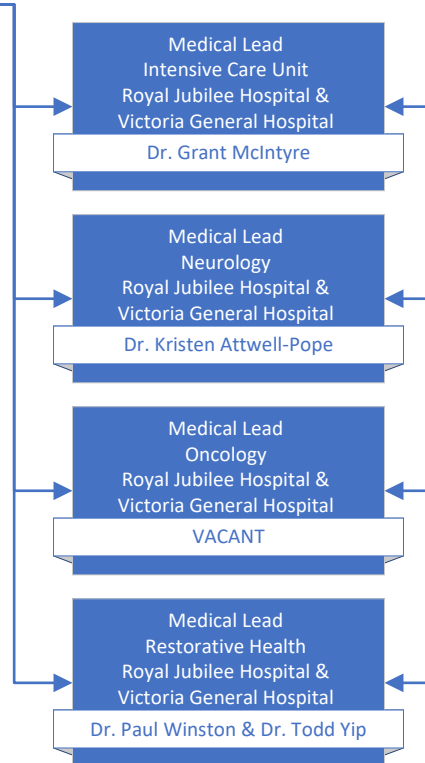
## Greater Victoria Acute Care/Pediatrics, Midwifery, & Maternal Health



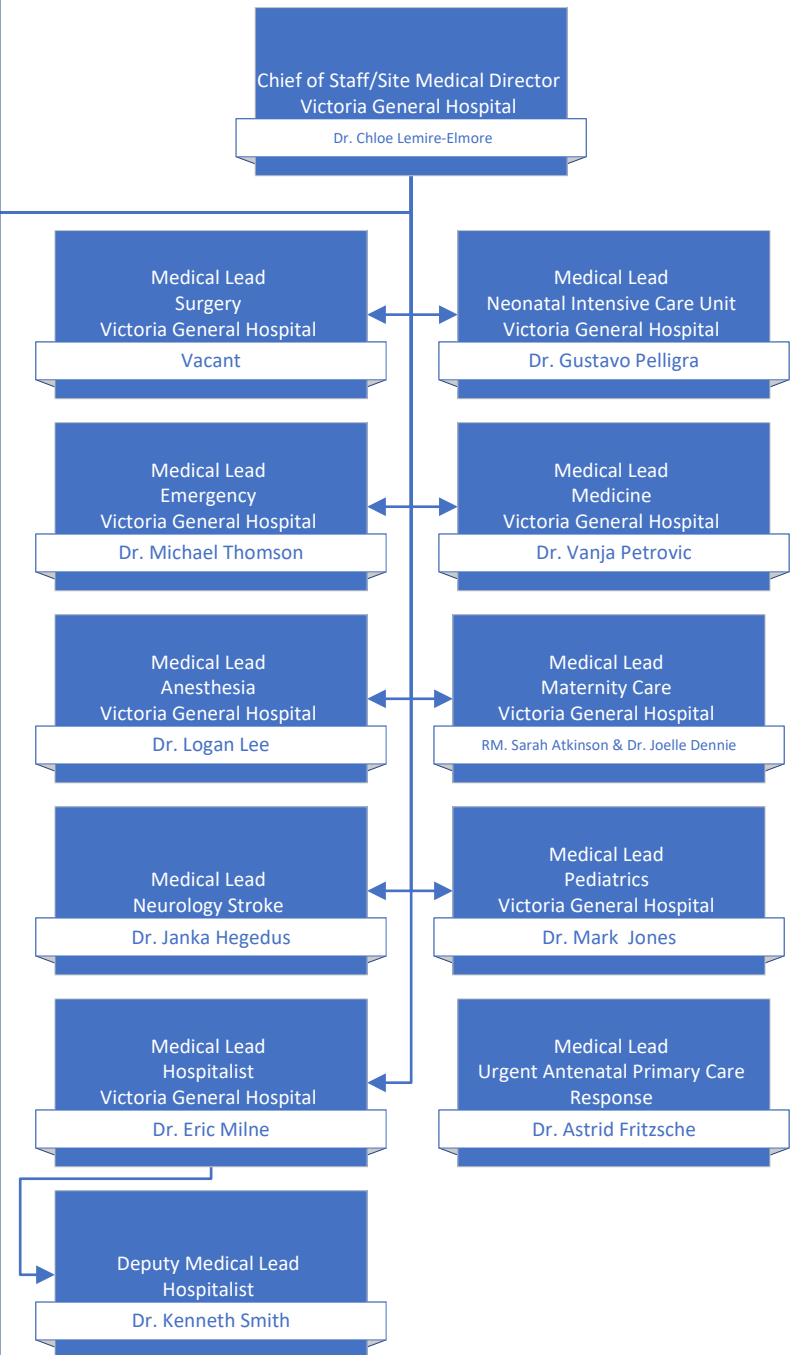
## Royal Jubilee Hospital (RJH)



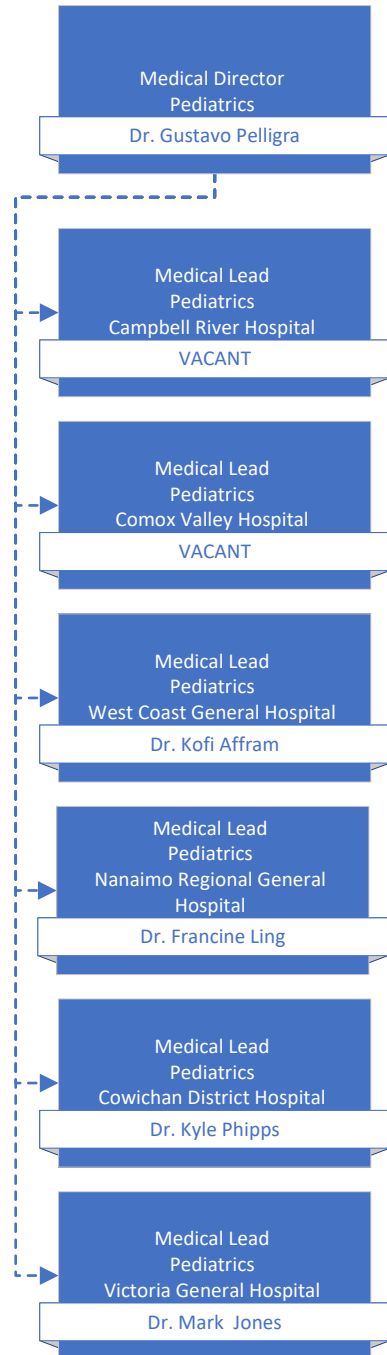
## RJH & VGH



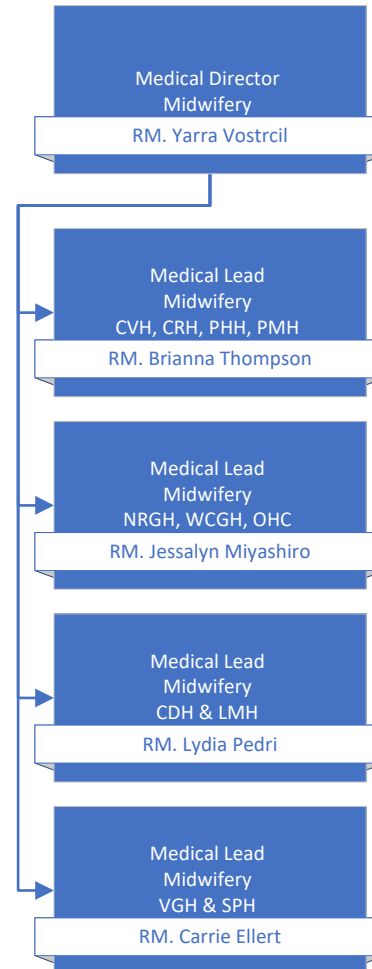
## Victoria General Hospital (VGH)



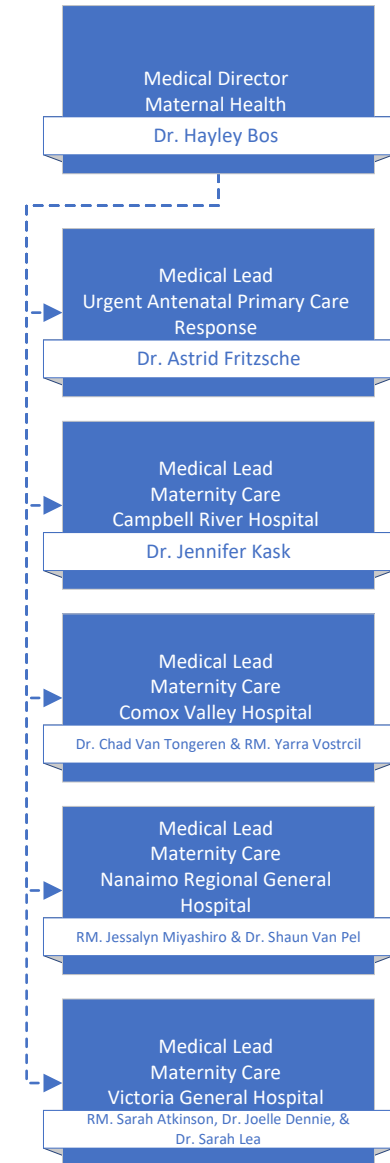
## Pediatrics Regional Strategy



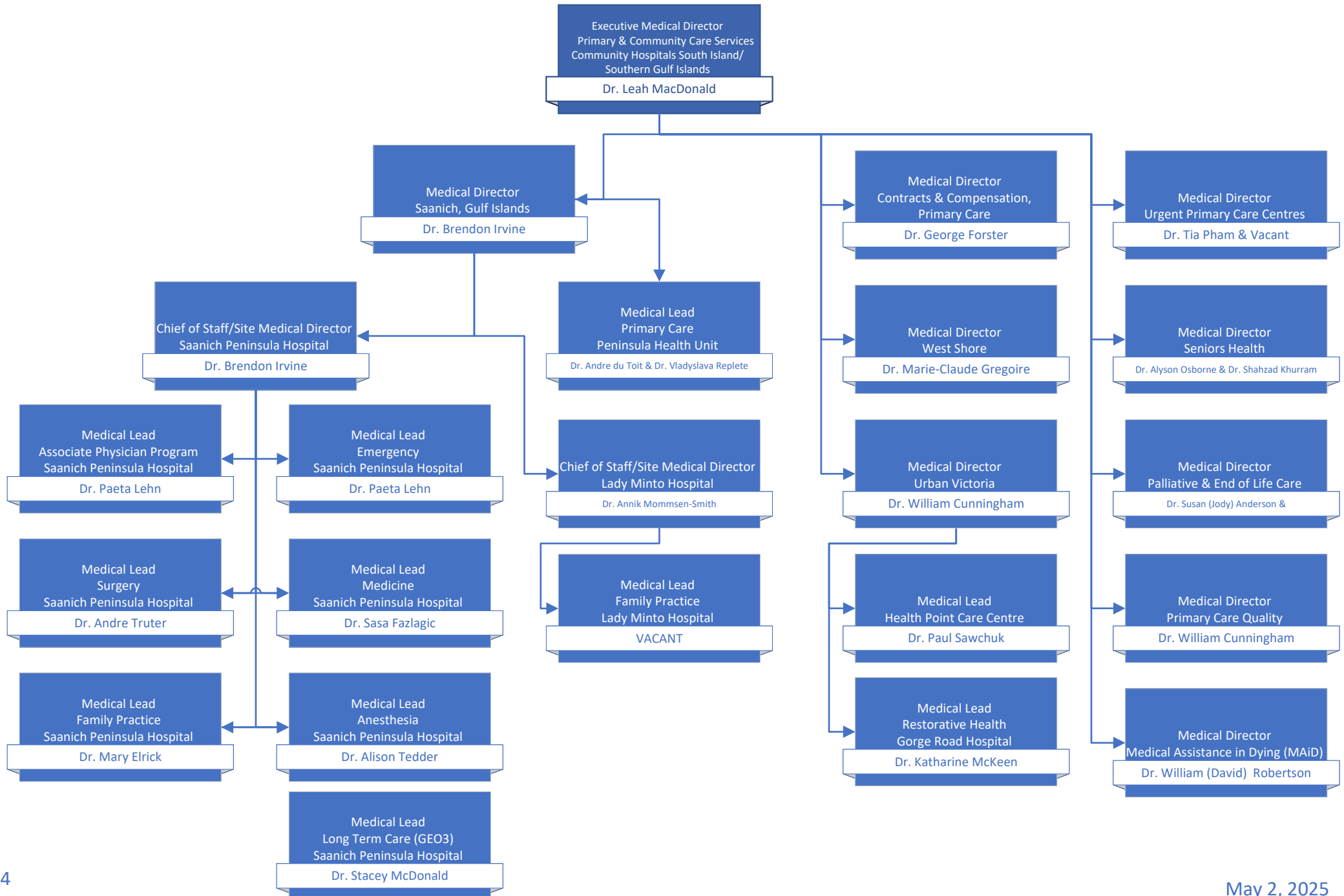
## Midwifery Regional Strategy



## Maternal Health Regional Strategy

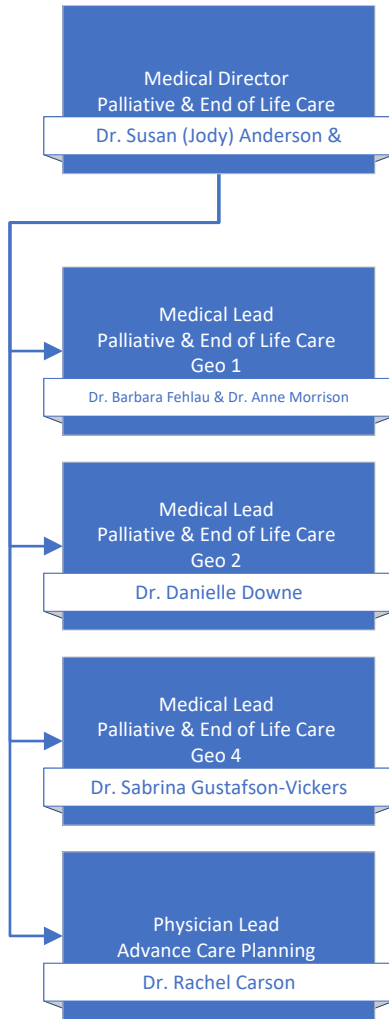


## Saanich Peninsula & Gulf Islands/Seniors & Primary Care

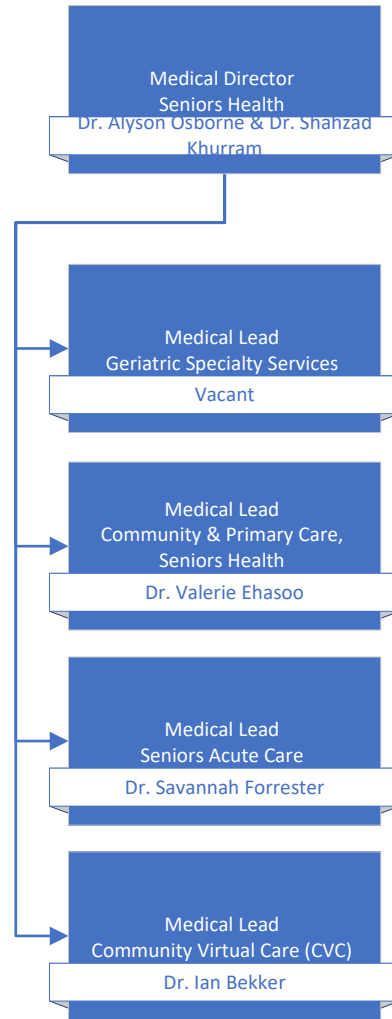




## Palliative & End of Life Care



## Seniors Health



## Urgent Primary Care Centres

