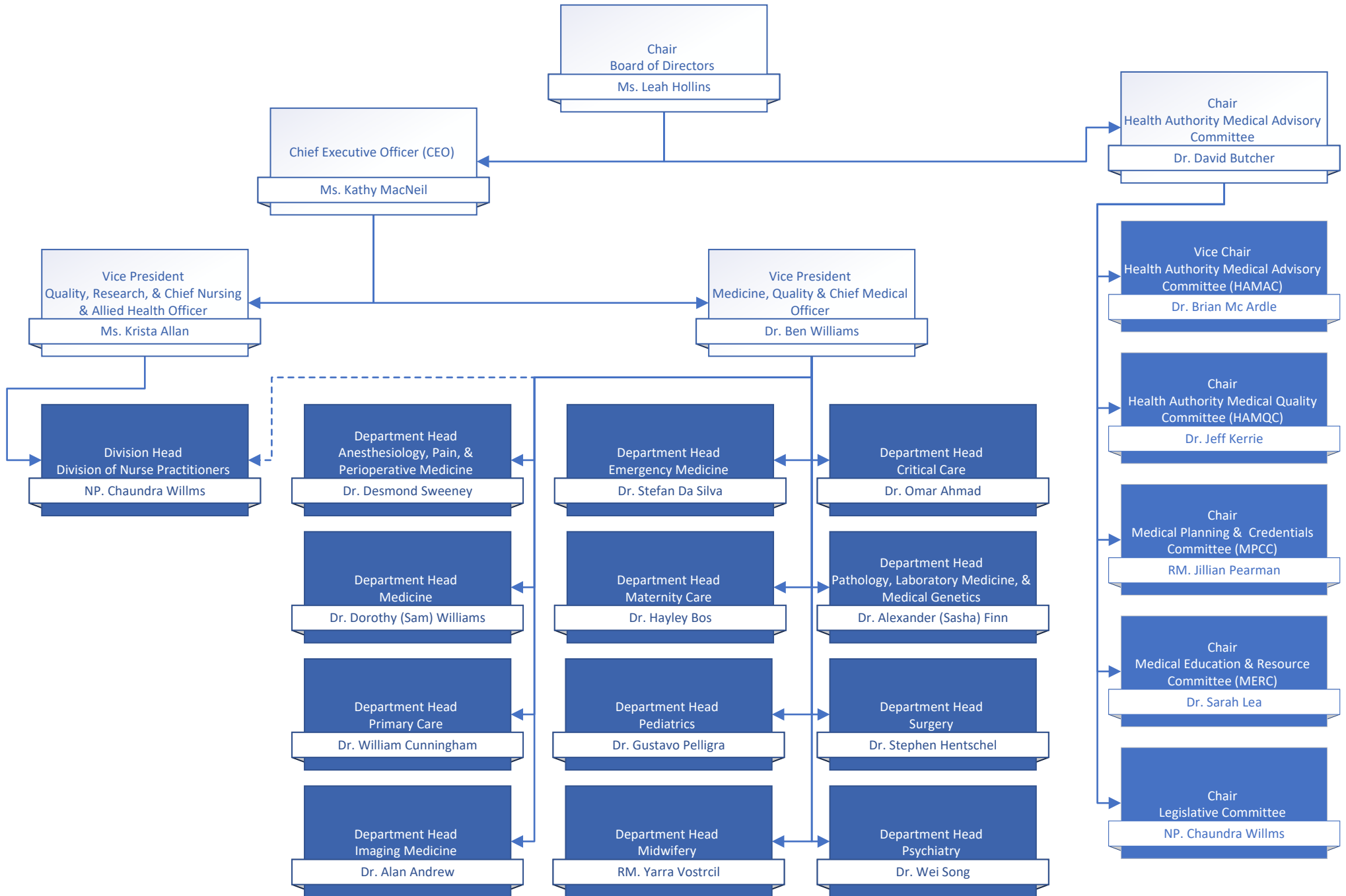
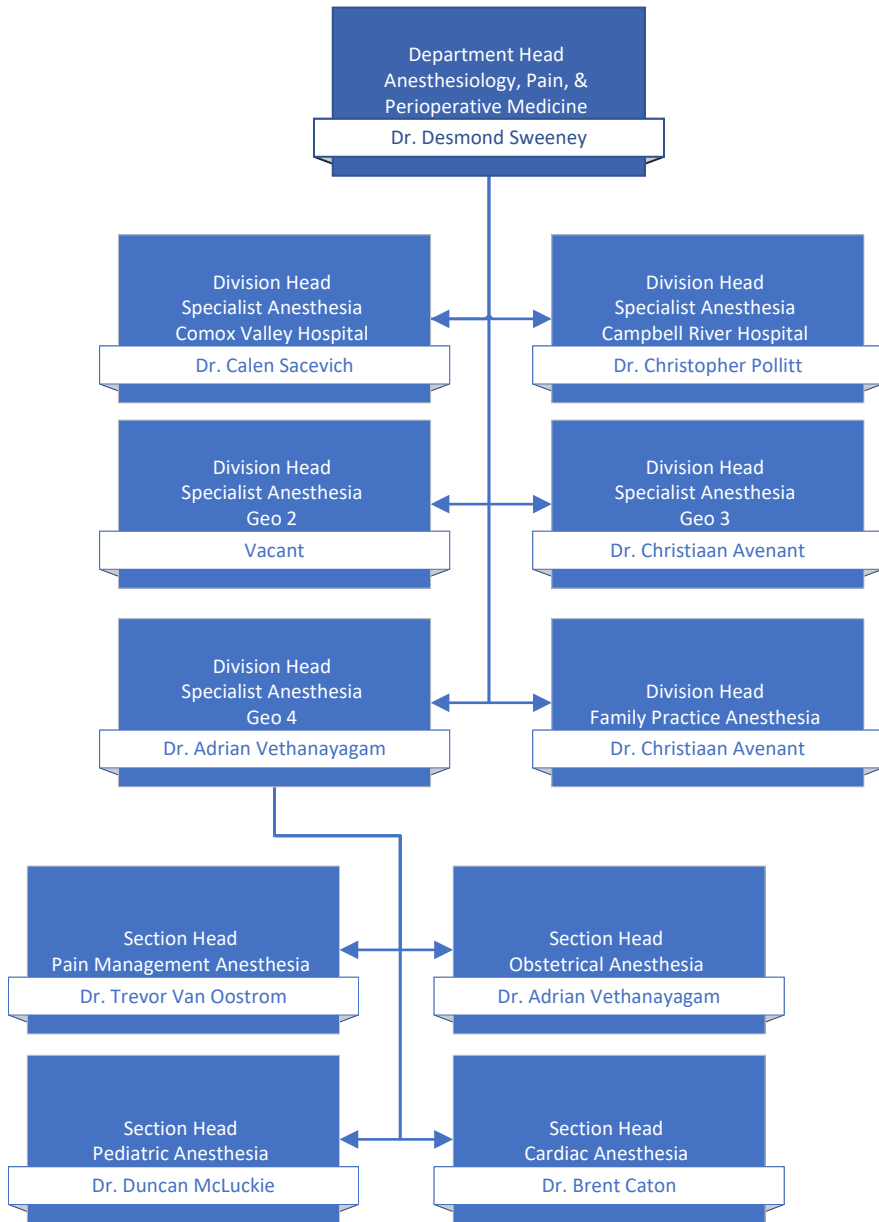


Table of Contents	page #
Medical Staff Governance	2
Departments of: Anesthesiology, Pain, & Perioperative Medicine   Emergency Medicine   Critical Care	3
Departments of: Imaging Medicine   Pathology, Laboratory Medicine, & Medical Genetics   Psychiatry	4
Departments of: Maternity Care   Pediatrics   Midwifery   Division of Nurse Practitioners	5
Department of Medicine	6
Department of Primary Care	7
Department of Surgery	8
Operational Executive Leadership	9
Medical & Academic Affairs	10
Medication Systems & Medical Informatics   Quality & Safety	11
Surgery, Ambulatory Care, & Cancer Care Strategy	12
Mental Health & Substance Use   Addiction Medicine	13
Comox Valley, Campbell River, Port Alberni & North Island/Long Term Care & Assisted Living	14
Comox Valley Hospital   Campbell River Hospital   West Coast General Hospital	15
Long Term Care Geo 1 & 2	16
Long Term Care Geo 3 & 4	17
Nanaimo/Imaging Medicine & Laboratory	18
Pathology, Laboratory Medicine, & Medical Genetics Operations   Imaging Medicine Operations	19
Cowichan Valley	20
Greater Victoria Acute Care/Pediatrics, Midwifery, & Maternal Health	21
Royal Jubilee Hospital   Victoria General Hospital	22
Pediatrics Operations   Midwifery Operations   Maternal Health Operations	23
Saanich Peninsula & Gulf Islands/Seniors & Primary Care	24
Palliative & End of Life Care   Seniors Health   Urgent Primary Care Centres	25

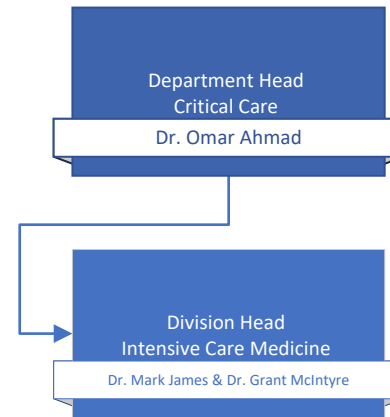
# Medical Staff Governance



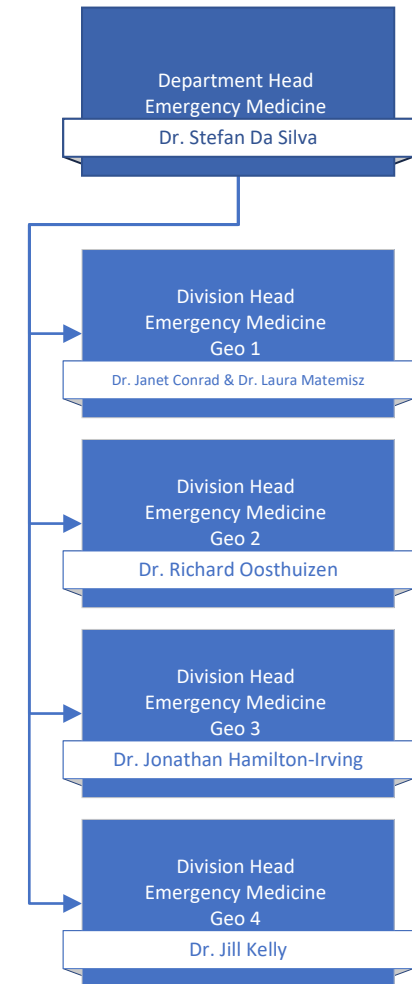
## Department of Anesthesiology, Pain, & Perioperative Medicine



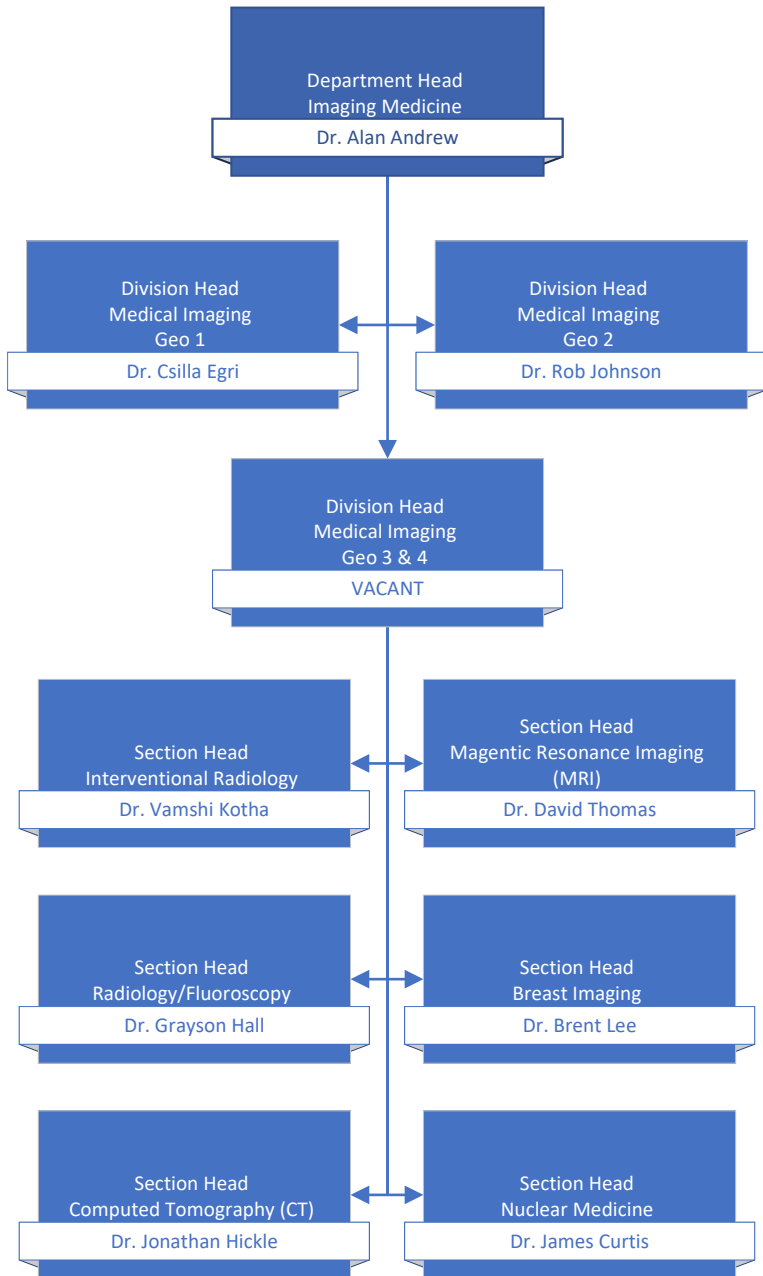
## Department of Critical Care



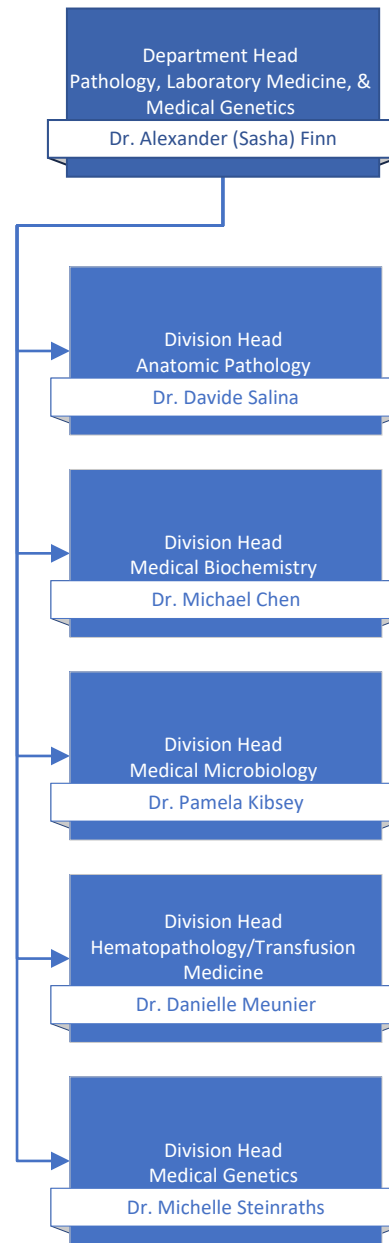
## Department of Emergency Medicine



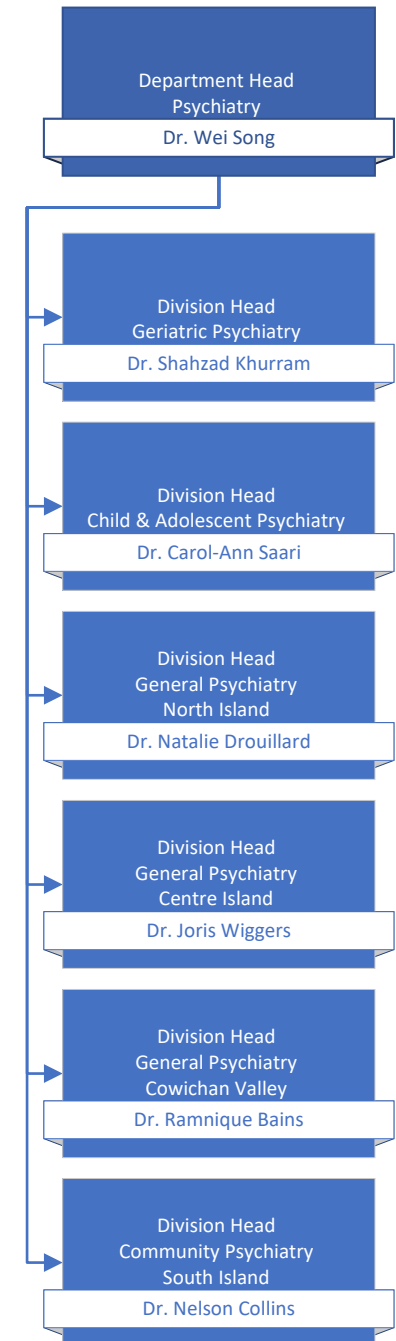
## Department of Imaging Medicine



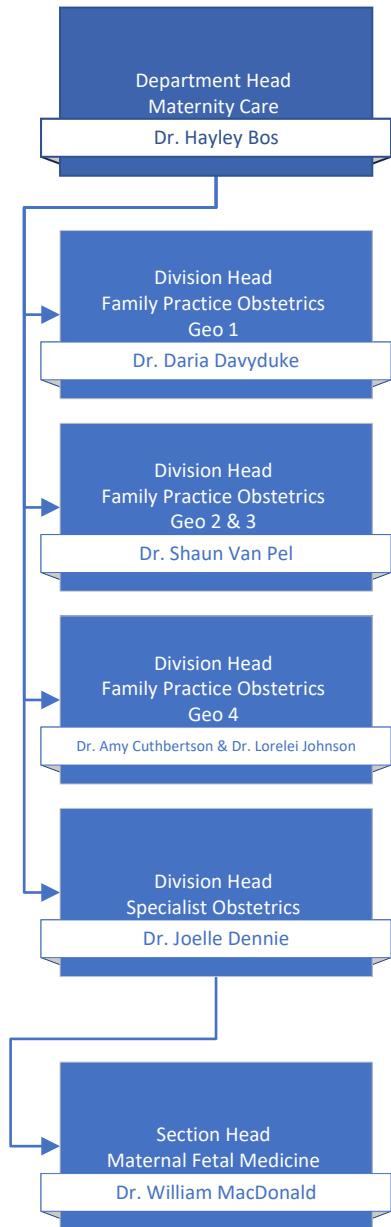
## Department of Pathology, Laboratory Medicine, & Medical Genetics



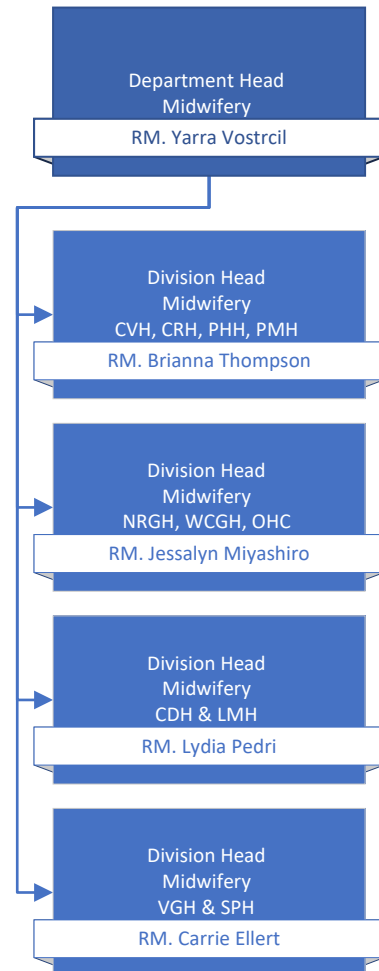
## Department of Psychiatry



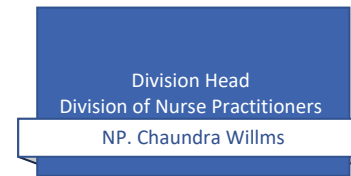
## Department of Maternity Care



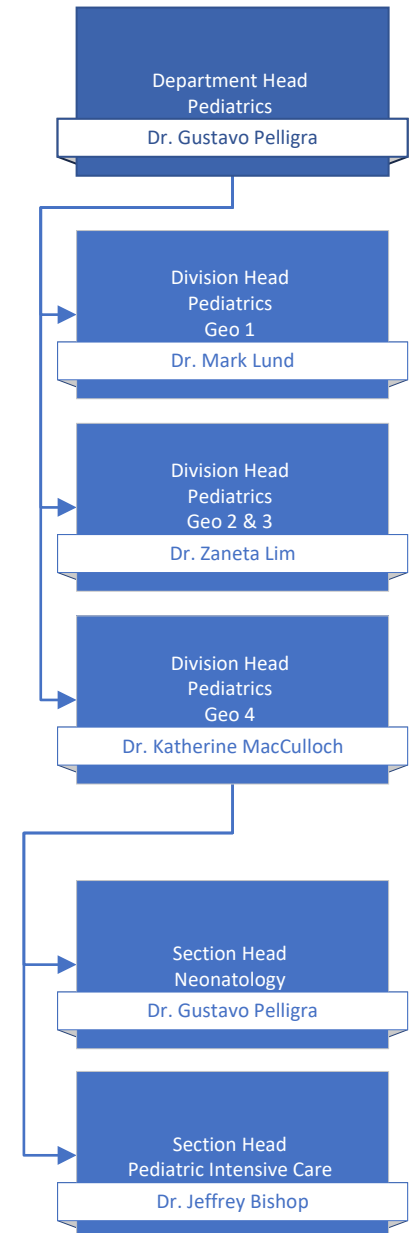
## Department of Midwifery



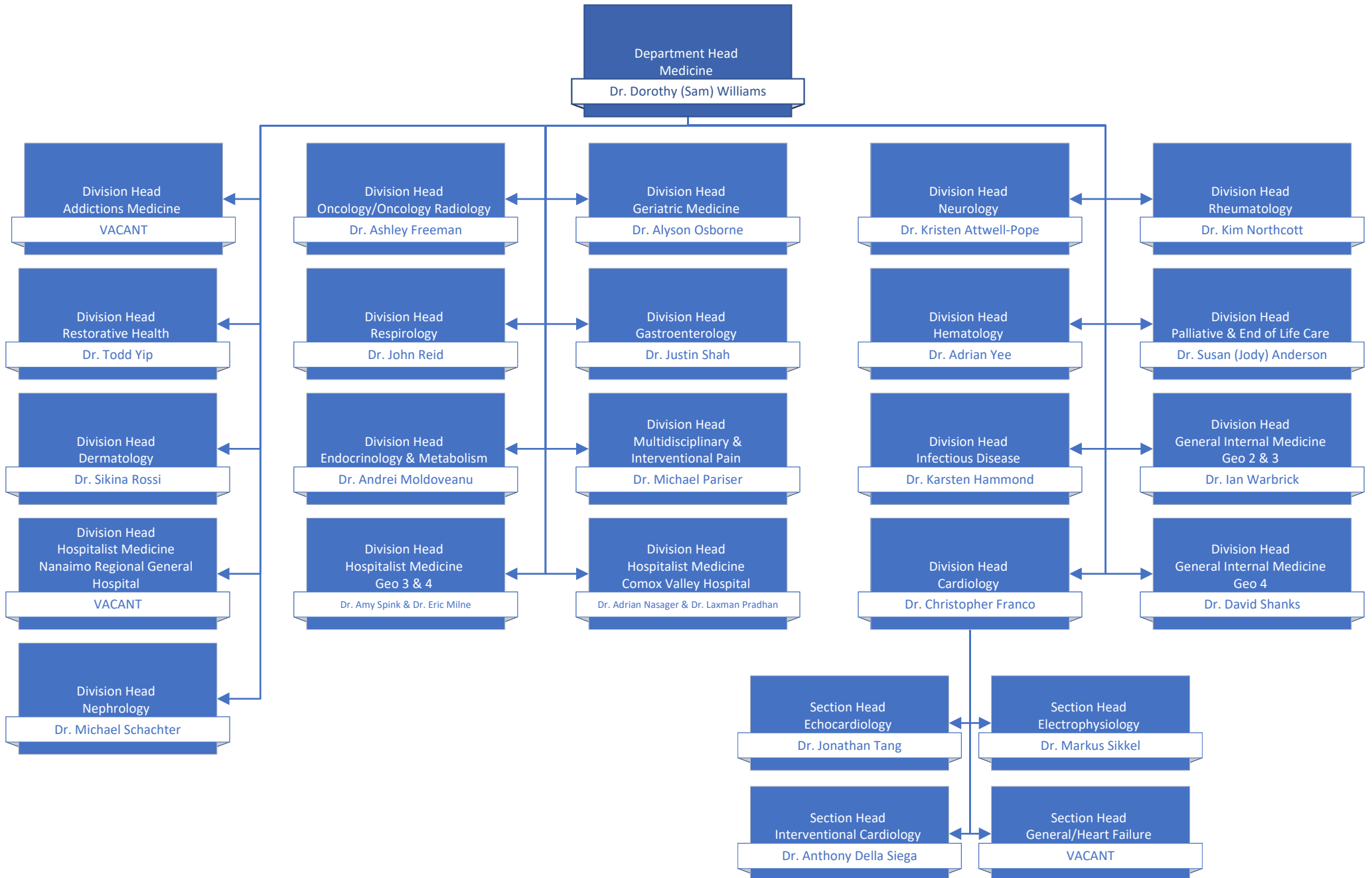
## Division of Nurse Practitioners



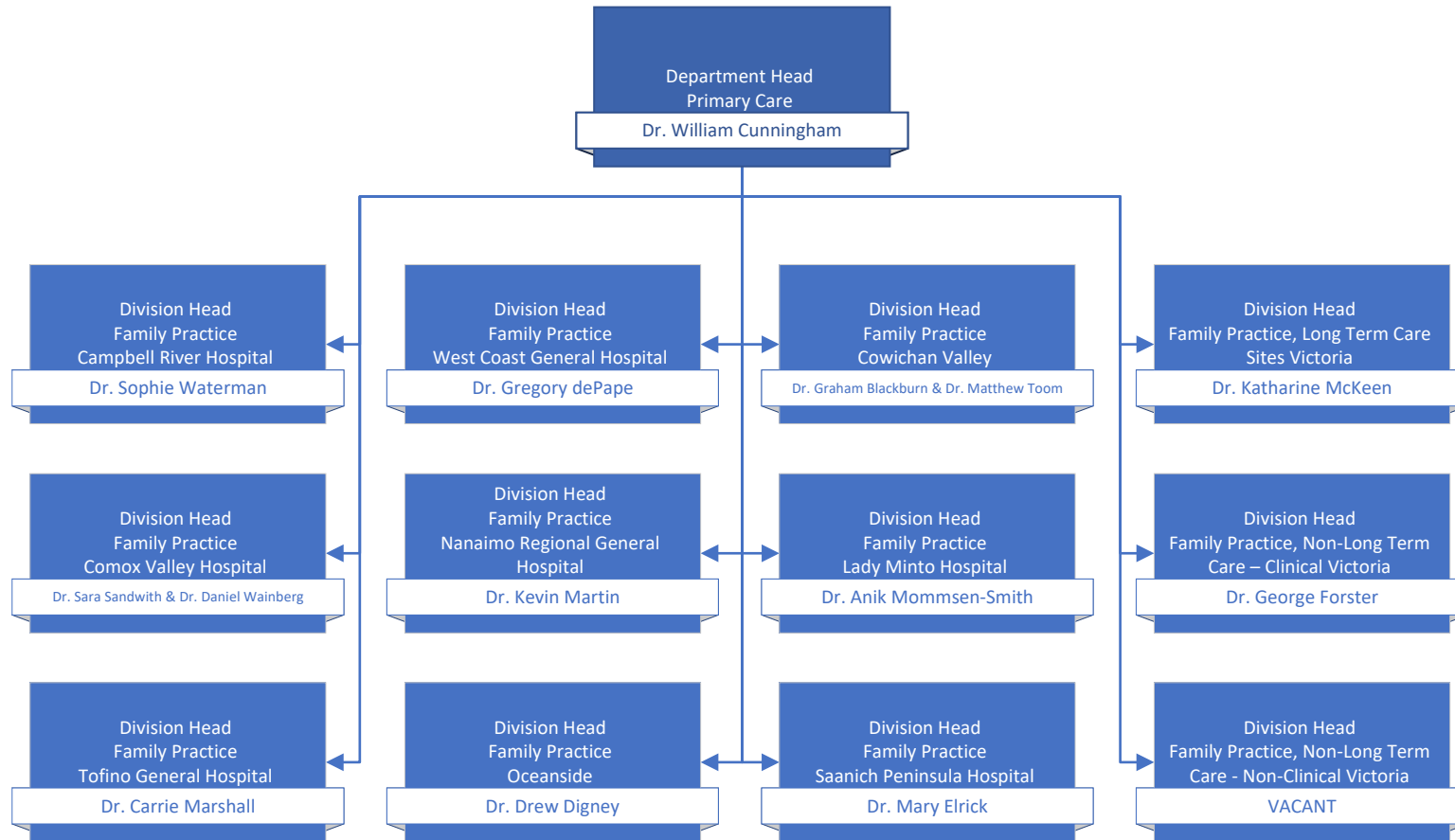
## Department of Pediatrics



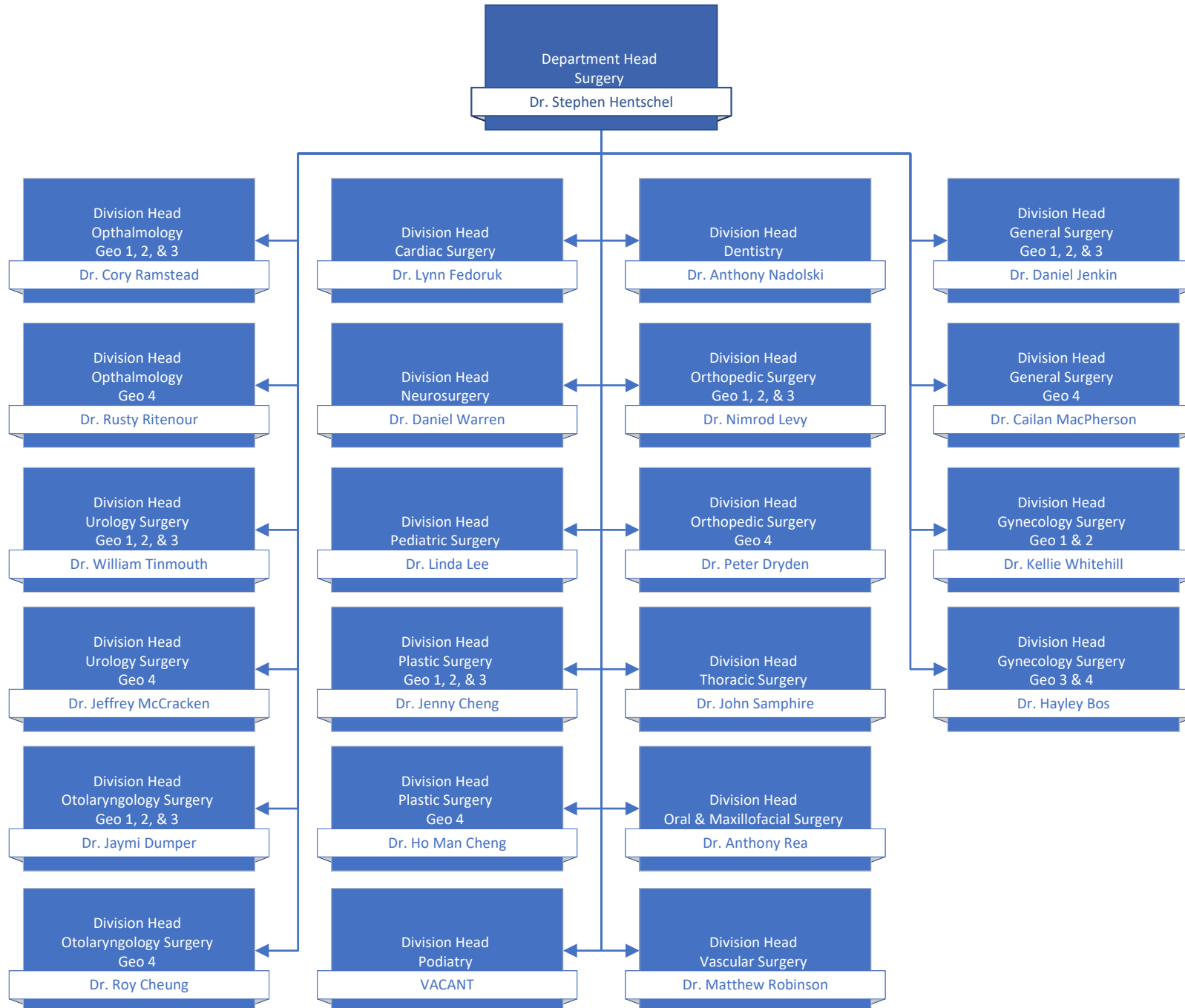
# Department of Medicine



## Department of Primary Care

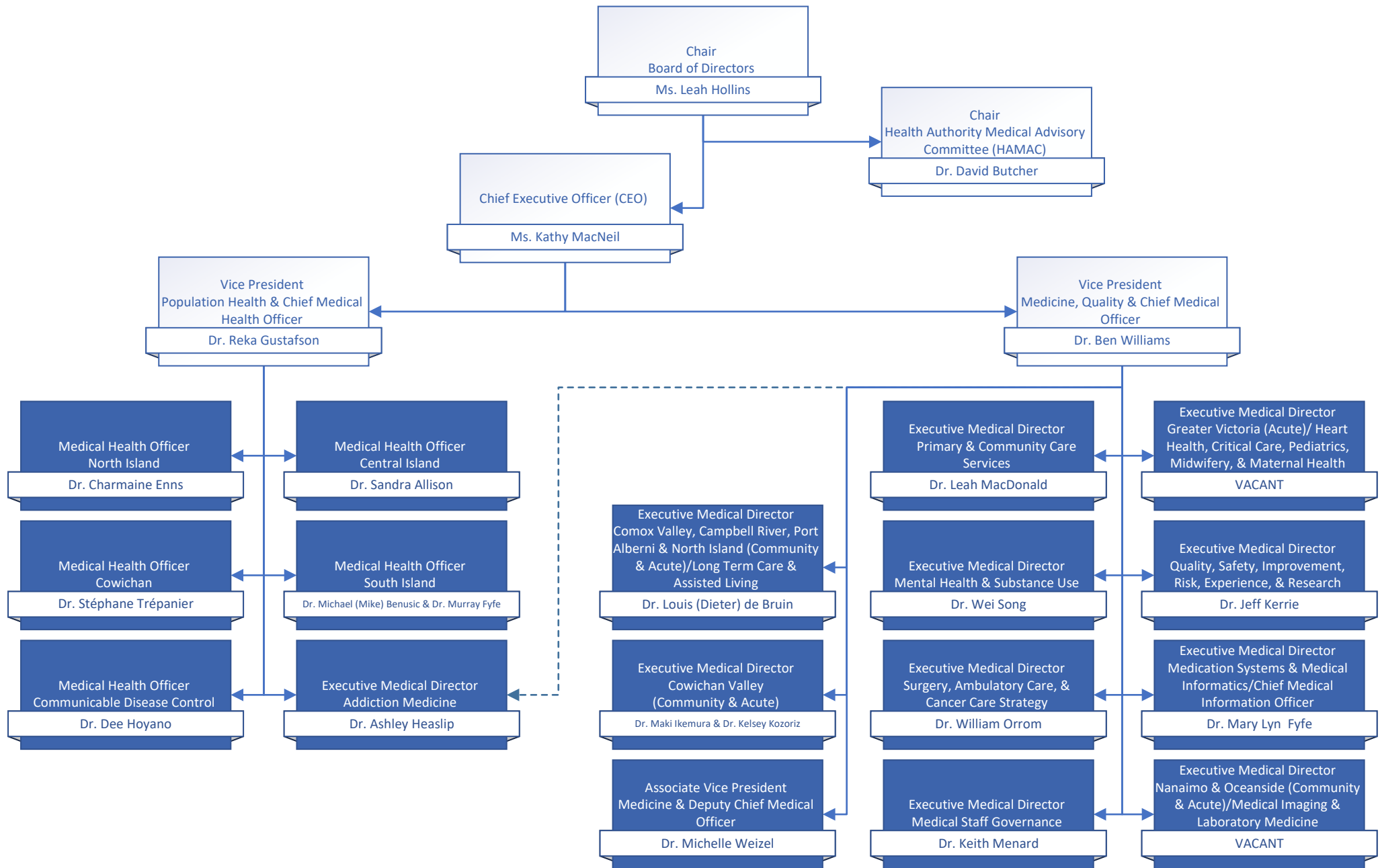


# Department of Surgery

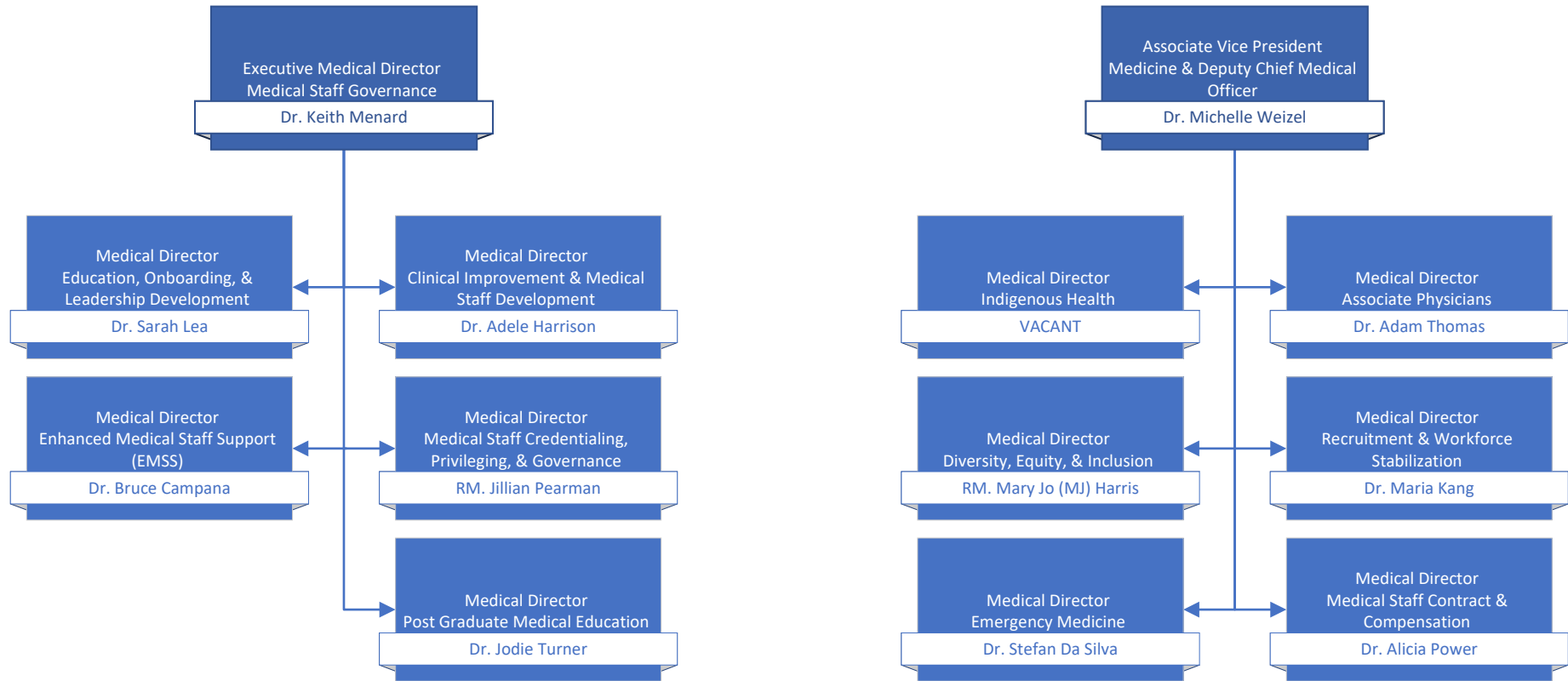




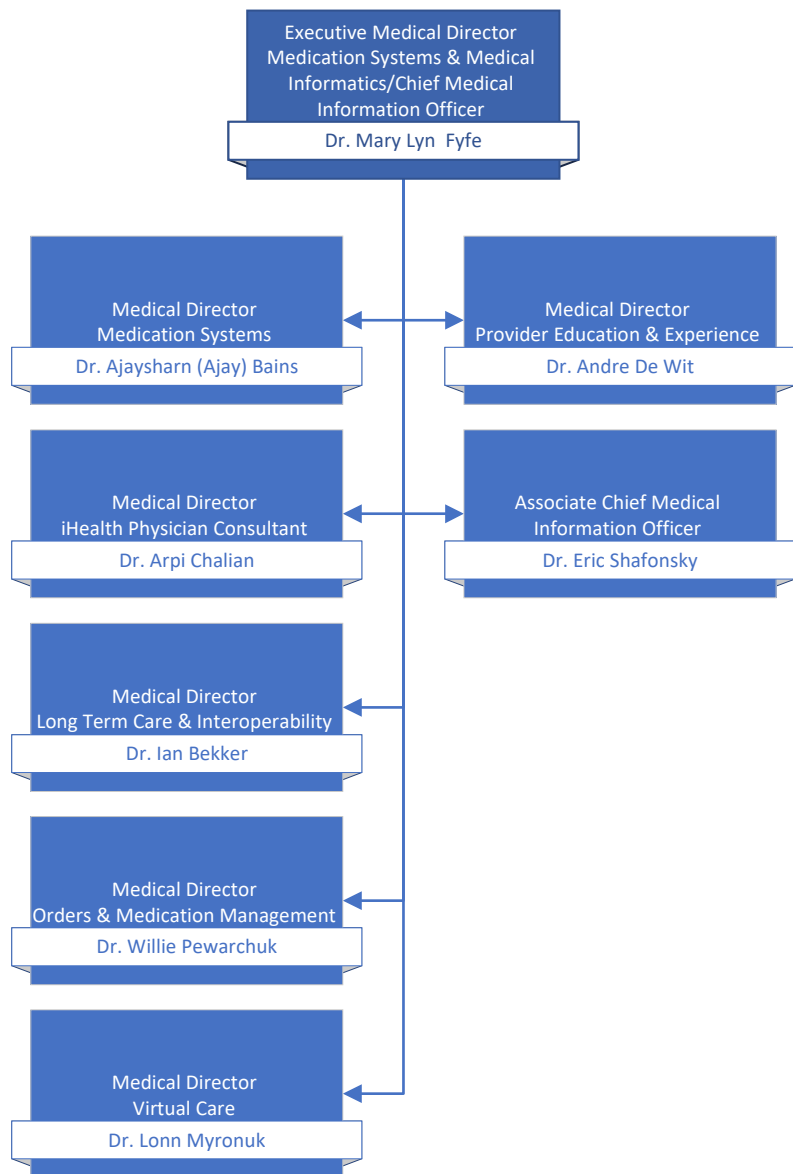
# Operational Executive Leadership



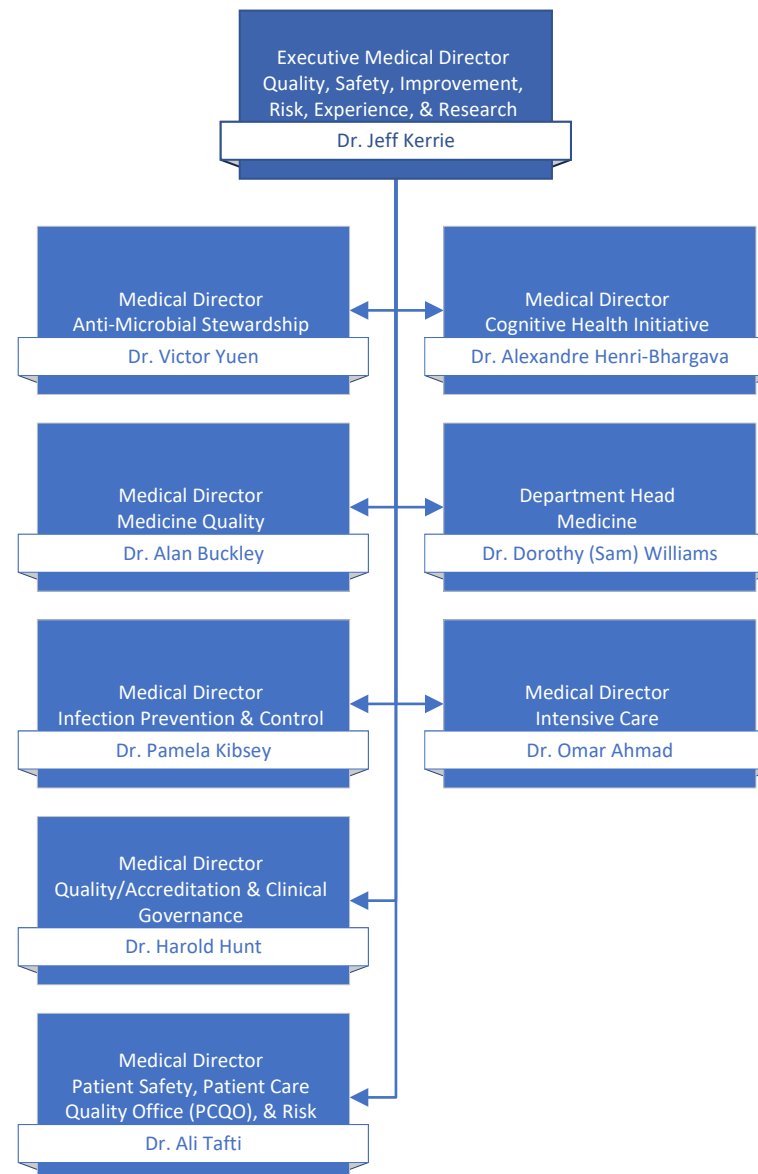
# Medical & Academic Affairs



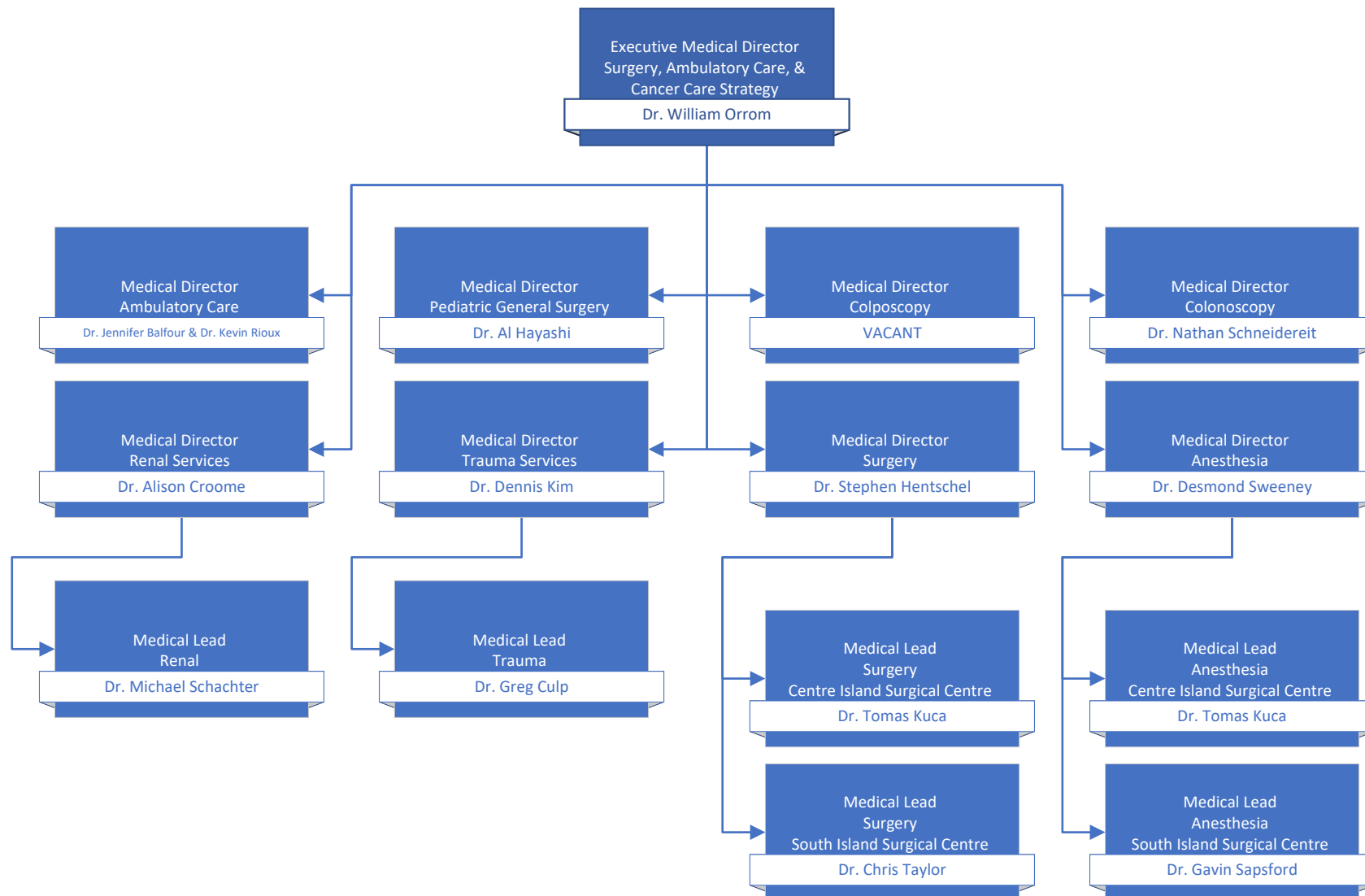
## Medication Systems & Medical Informatics



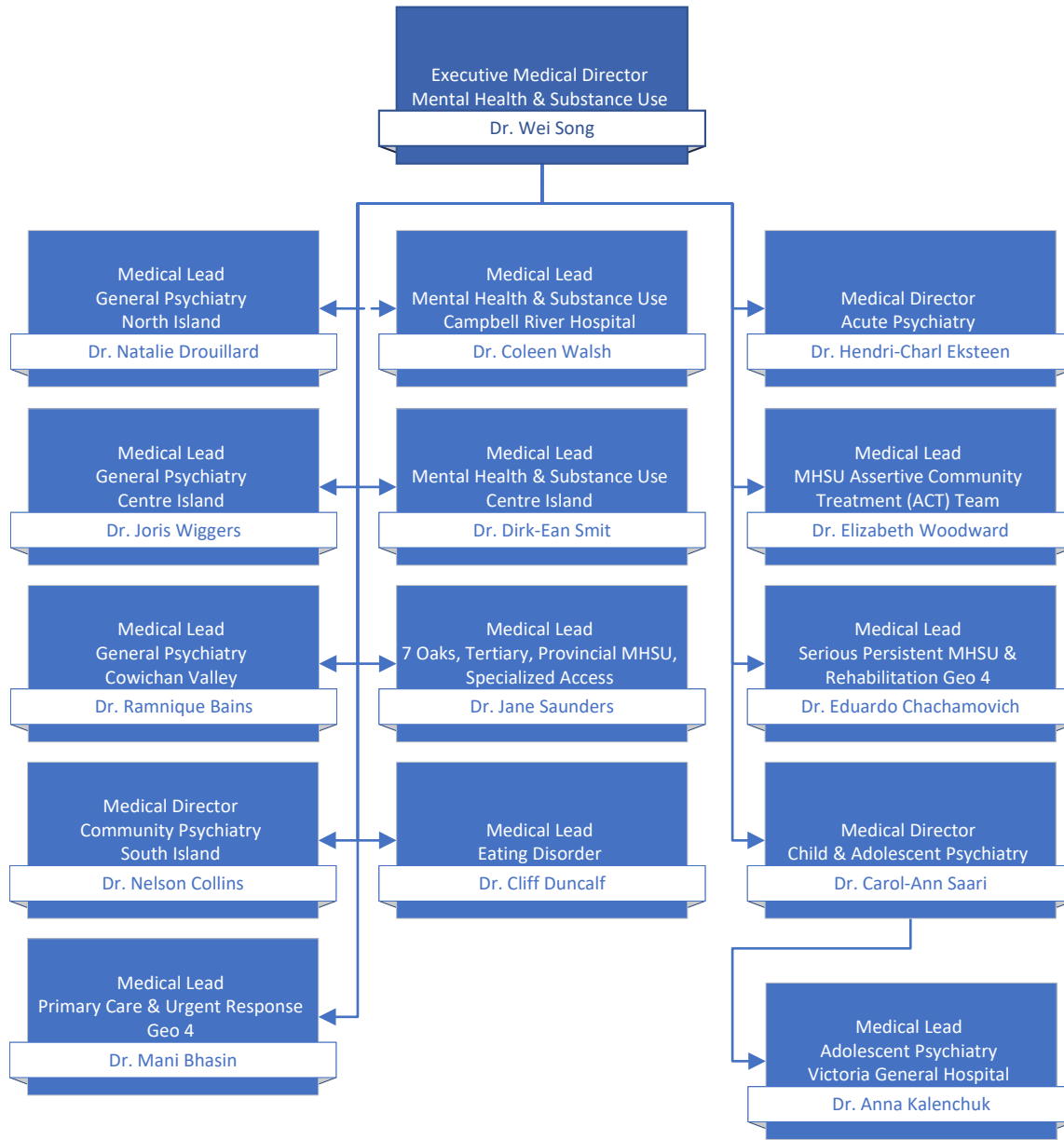
## Quality & Safety



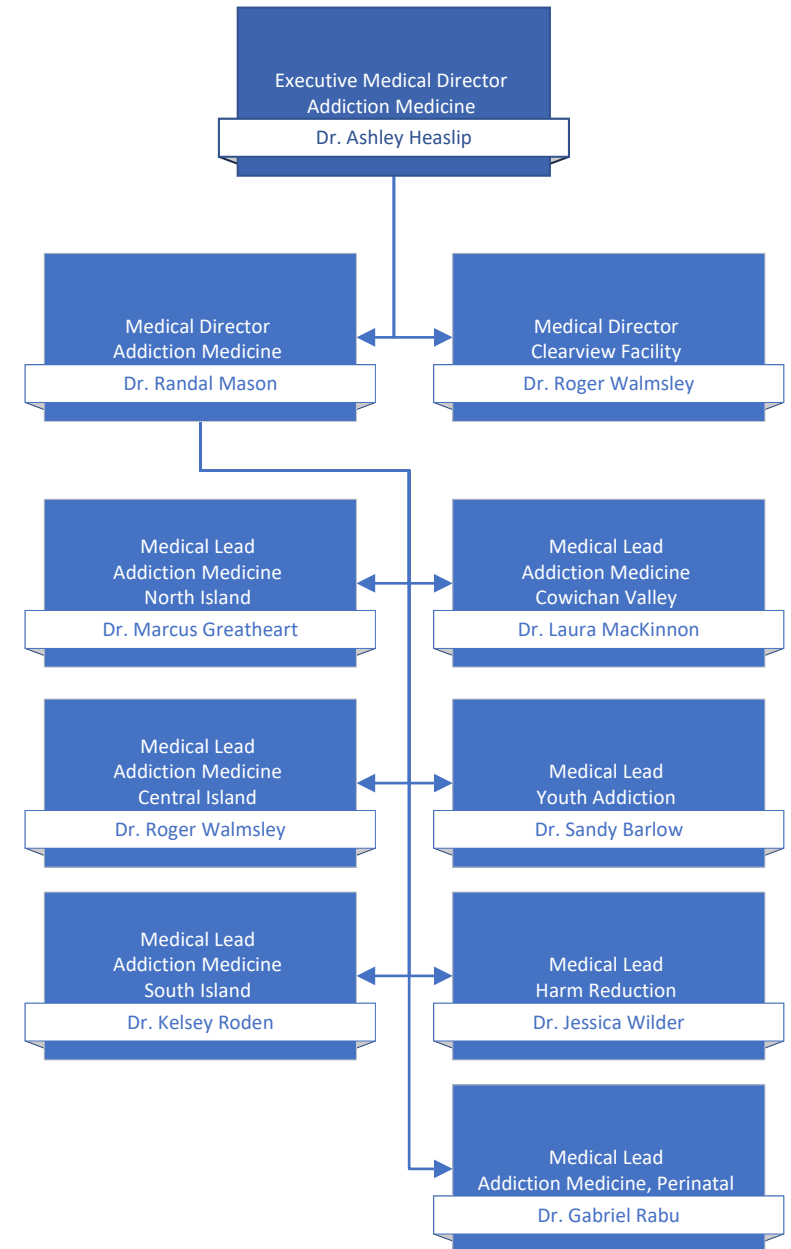
## Surgery, Ambulatory Care, & Cancer Care Strategy



## Mental Health & Substance Use



## Addiction Medicine

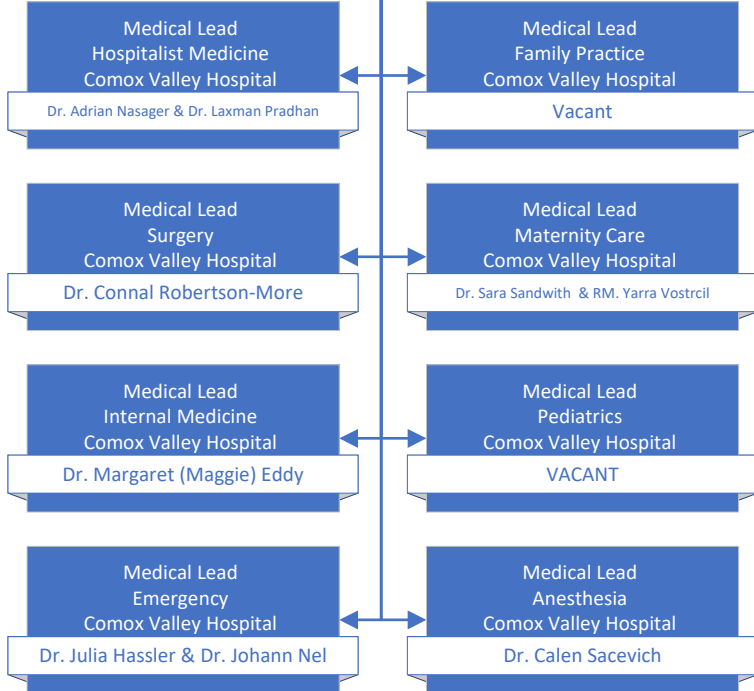


# Comox Valley, Campbell River, Port Alberni & North Island/Long Term Care & Assisted Living



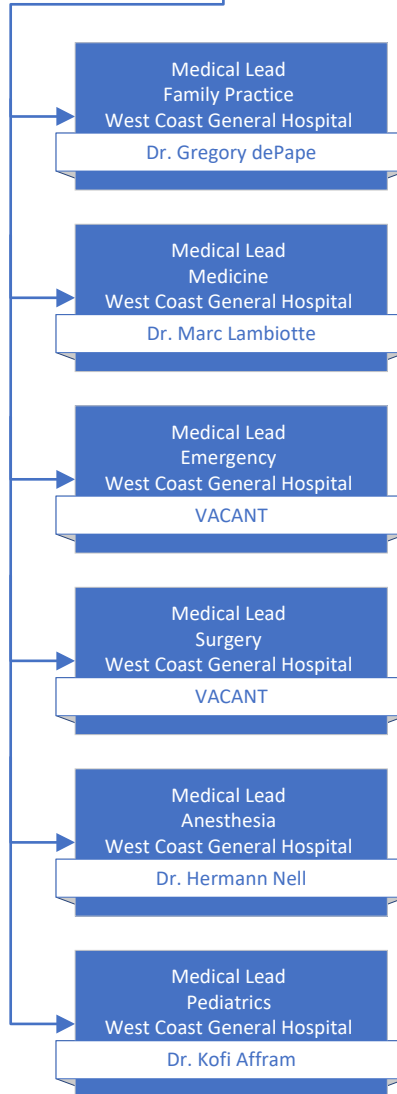
### Comox Valley Hospital

Chief of Staff/Site Medical Director  
Comox Valley Hospital  
Dr. Corey Tomlinson



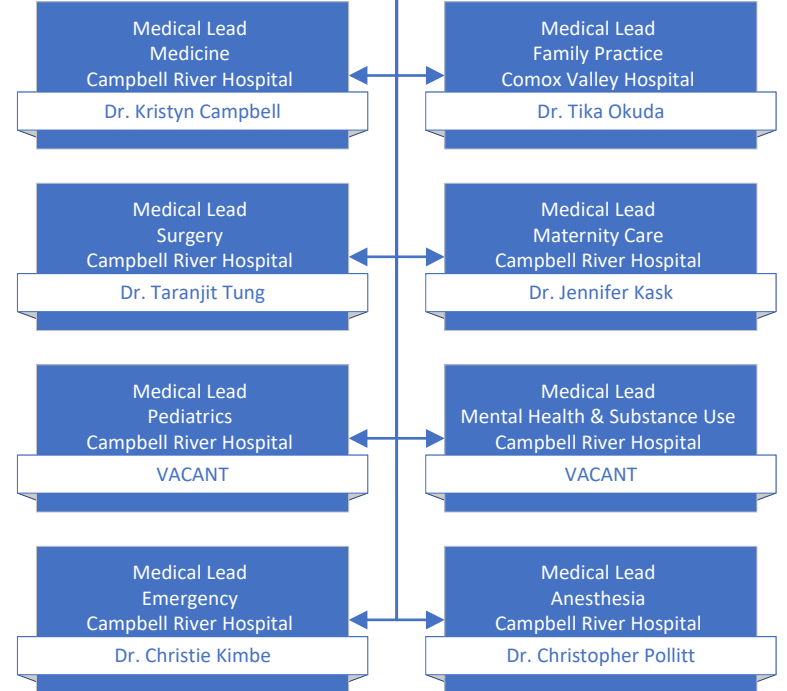
### West Coast General Hospital

Chief of Staff/Site Medical Director  
West Coast General Hospital  
VACANT

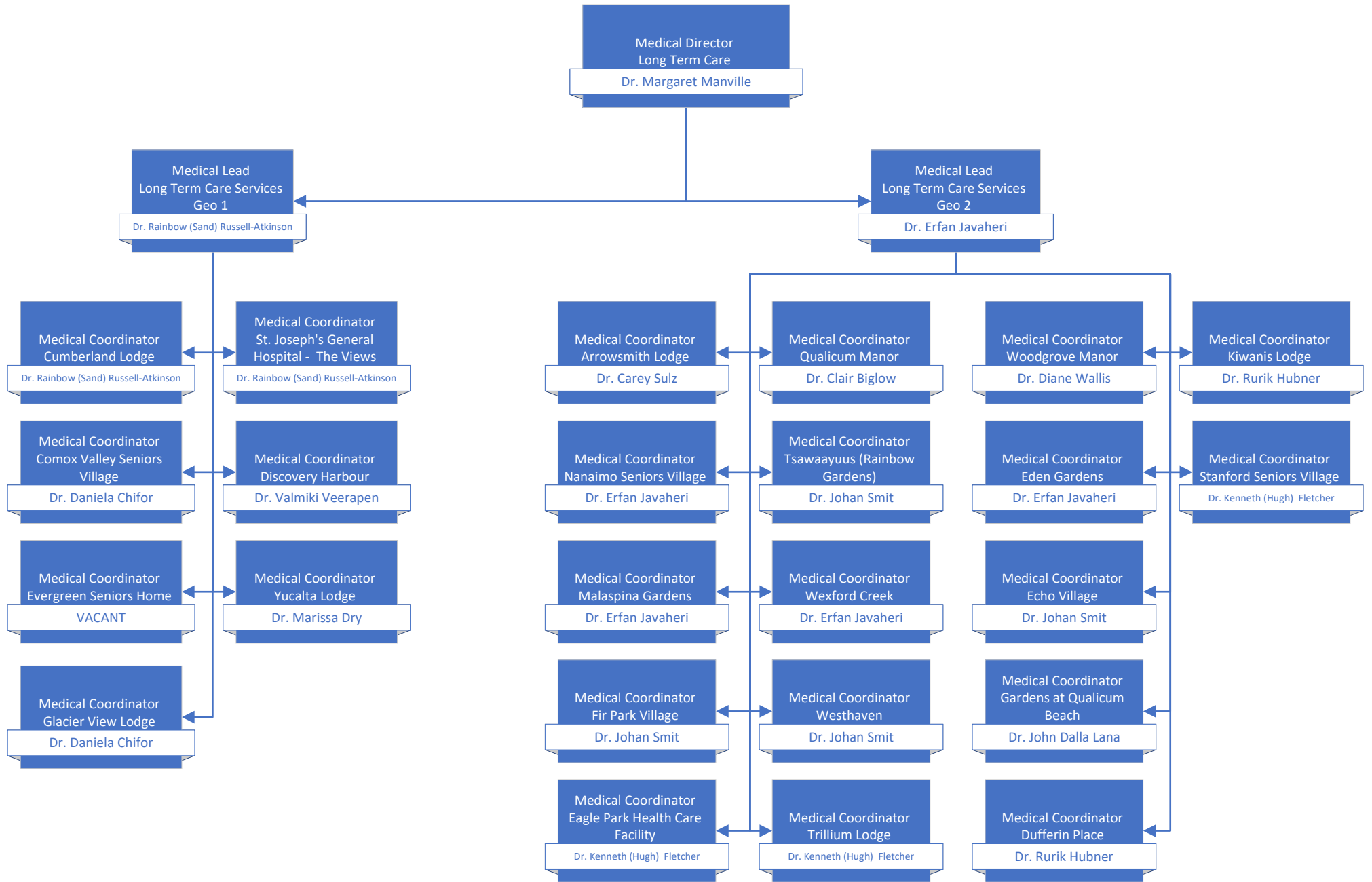


### Campbell River Hospital

Chief of Staff/Site Medical Director  
Campbell River Hospital  
Dr. Dean Percy

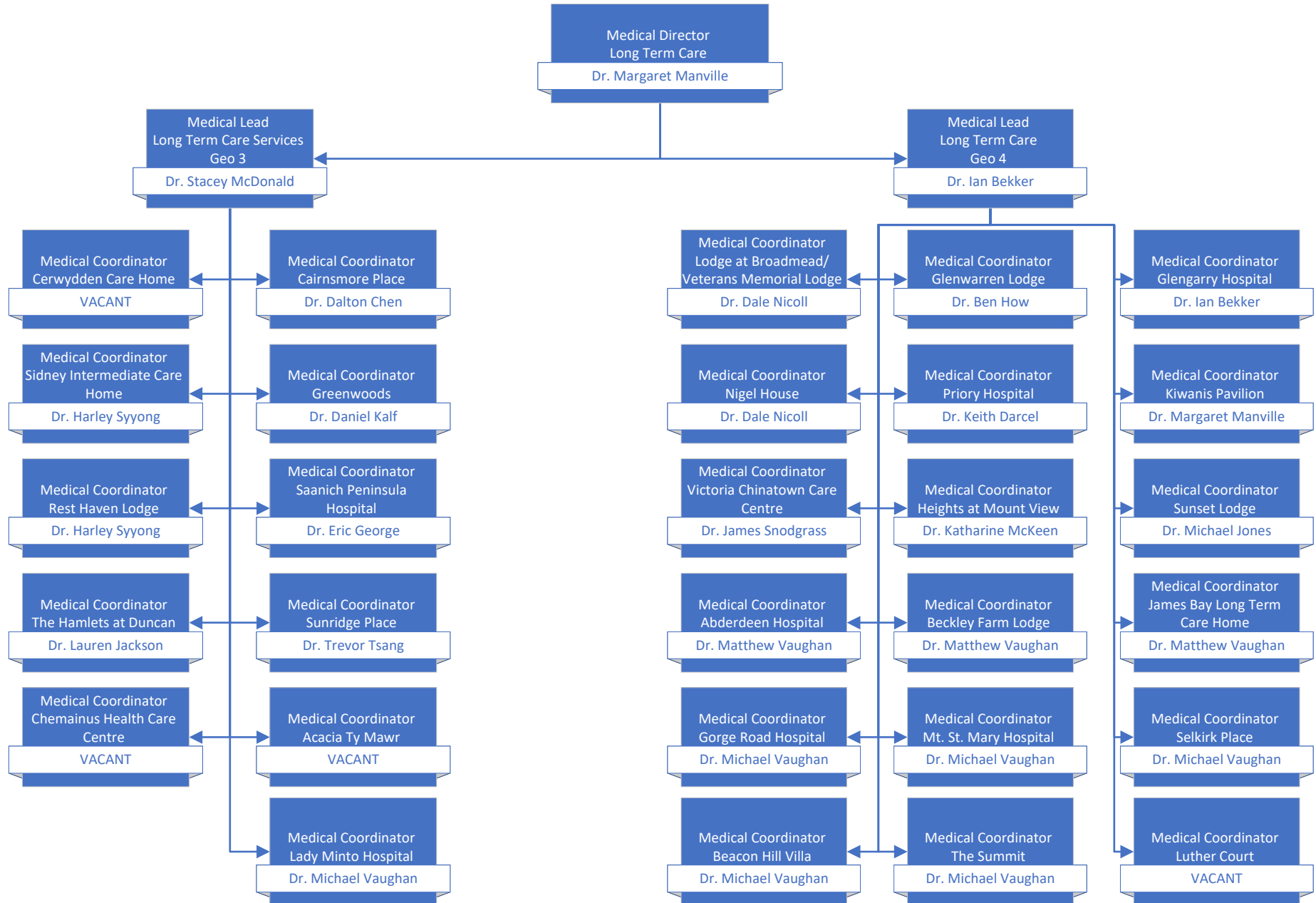


## Long Term Care (Geo 1 & 2)

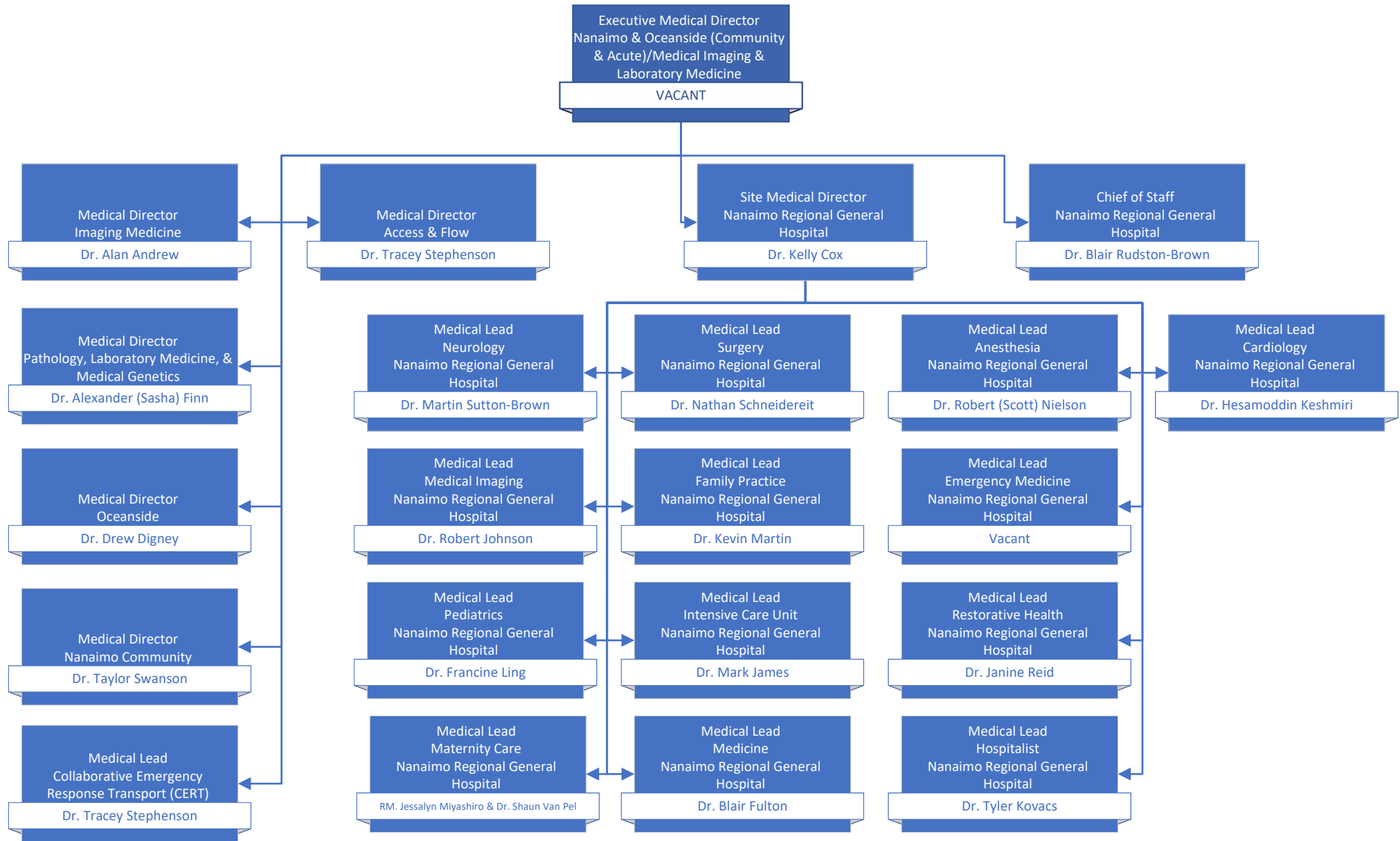




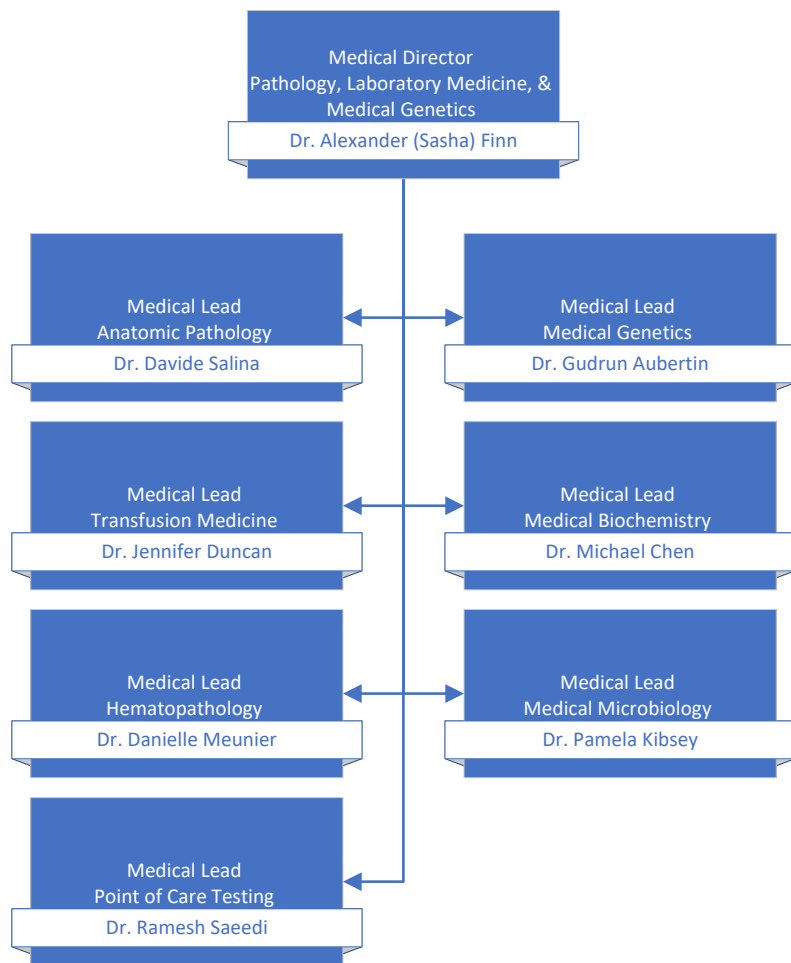
# Long Term Care (Geo 3 & 4)



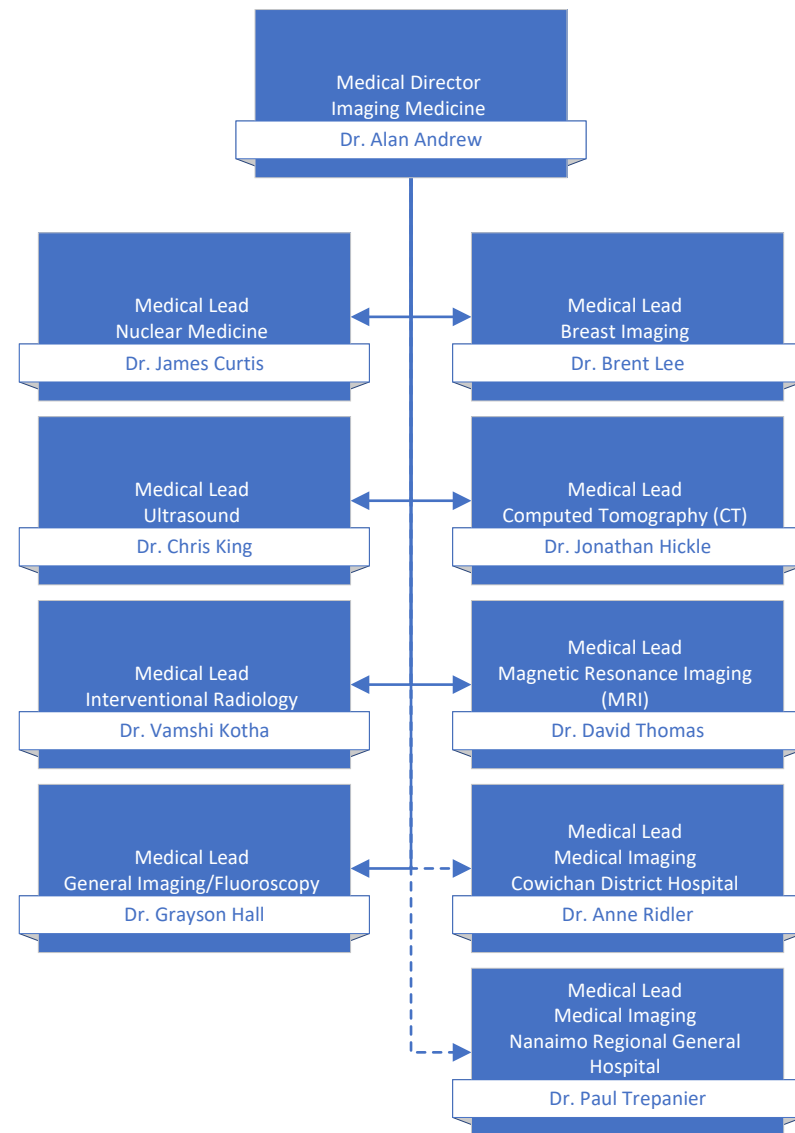
# Nanaimo/Medical Imaging & Laboratory Medicine



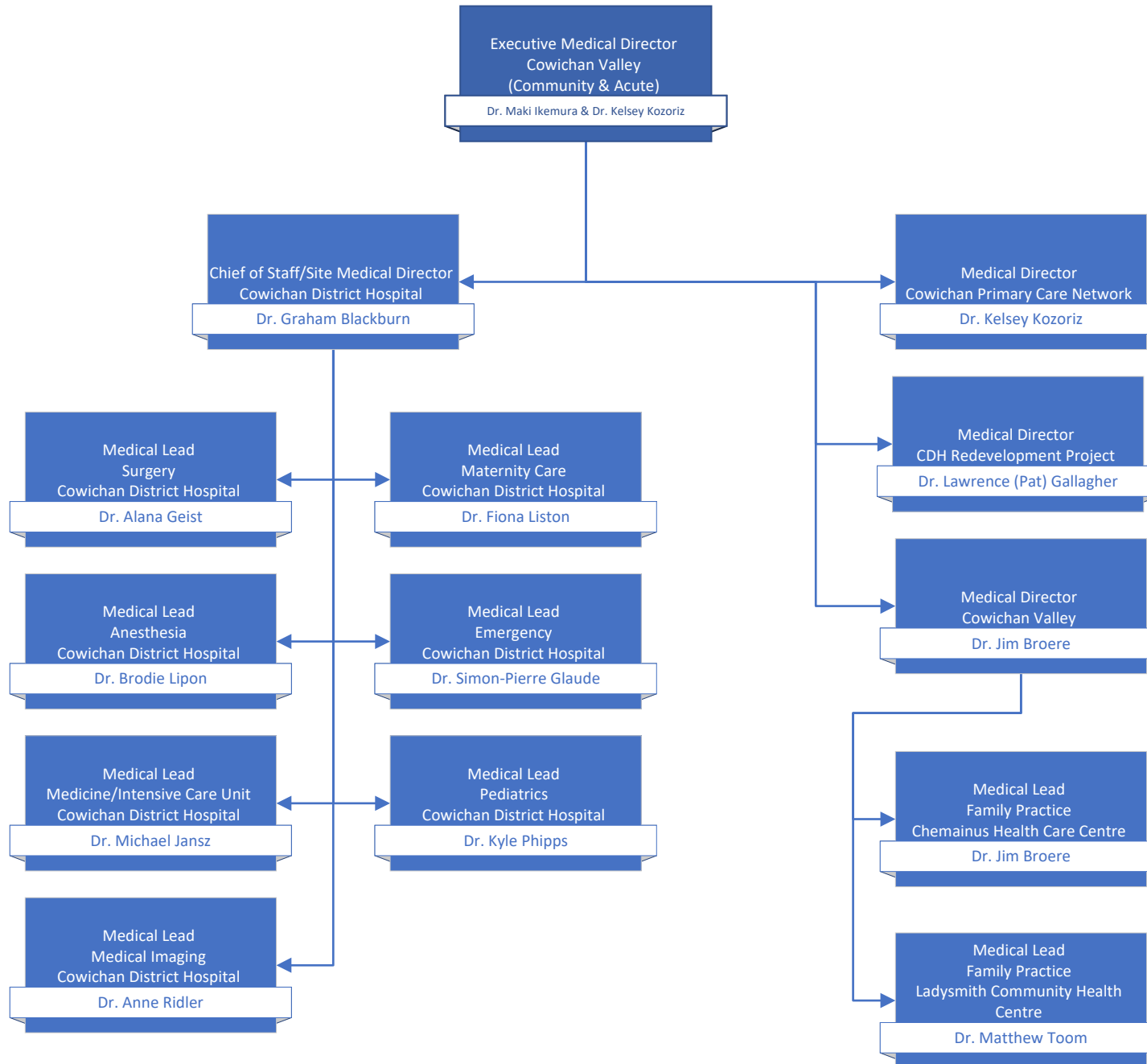
## Pathology, Laboratory Medicine, & Medical Genetics Operations



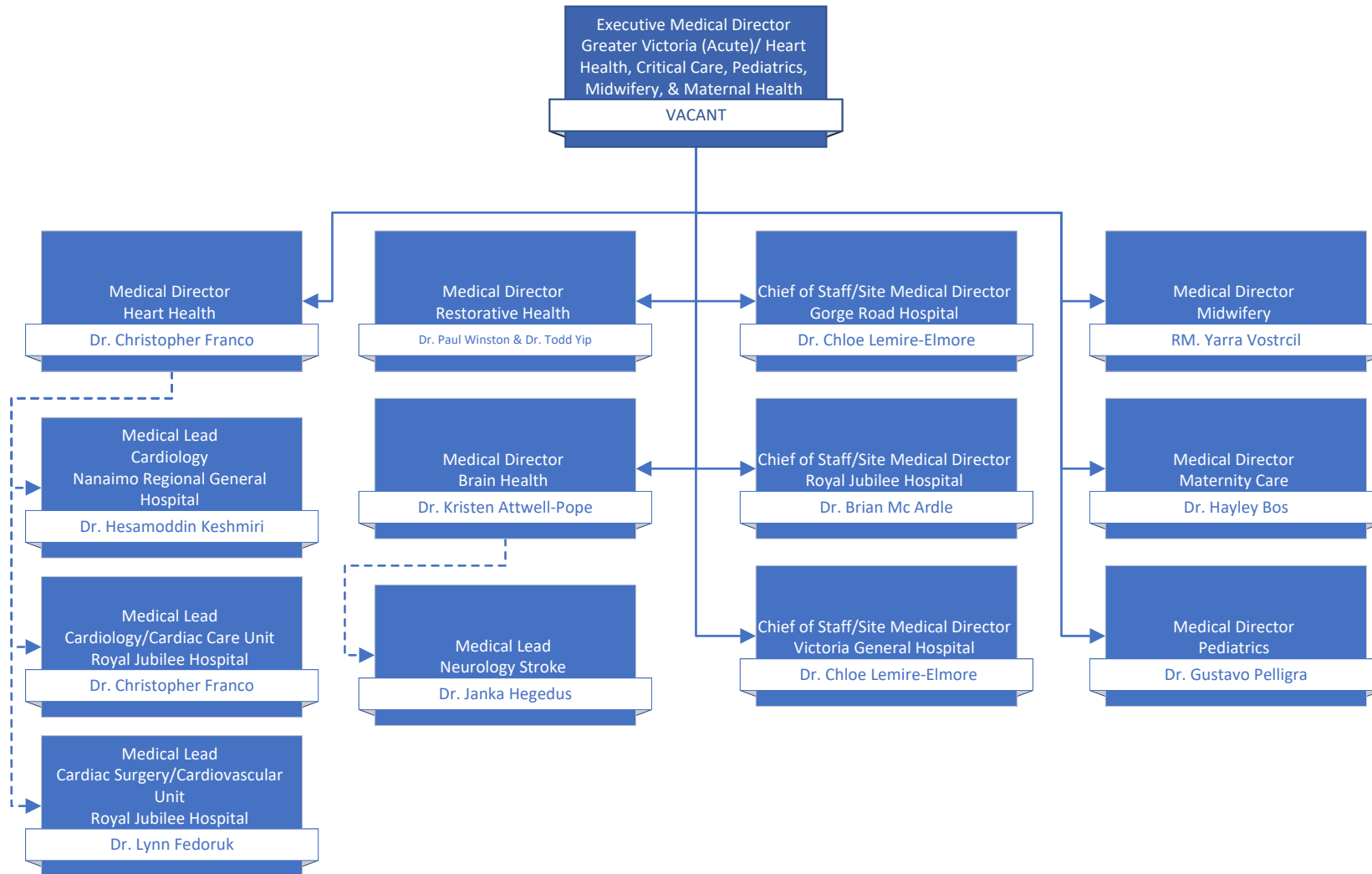
## Imaging Medicine Operations



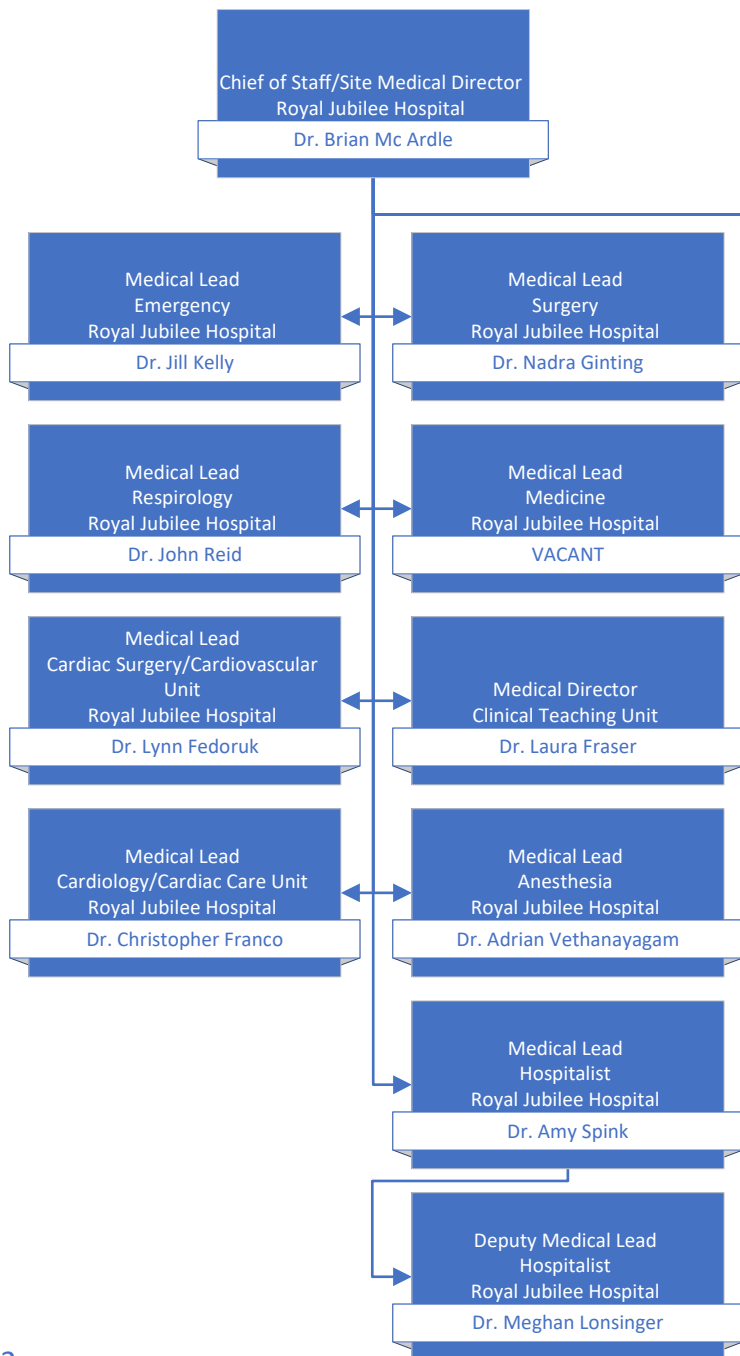
# Cowichan Valley



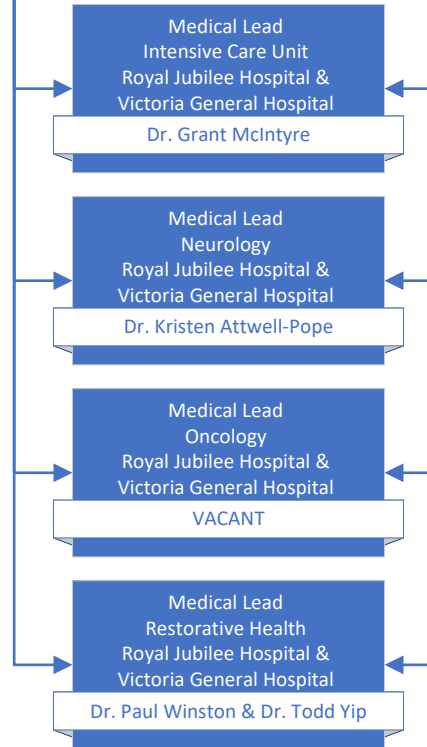
# Greater Victoria Acute Care/Pediatrics, Midwifery, & Maternal Health



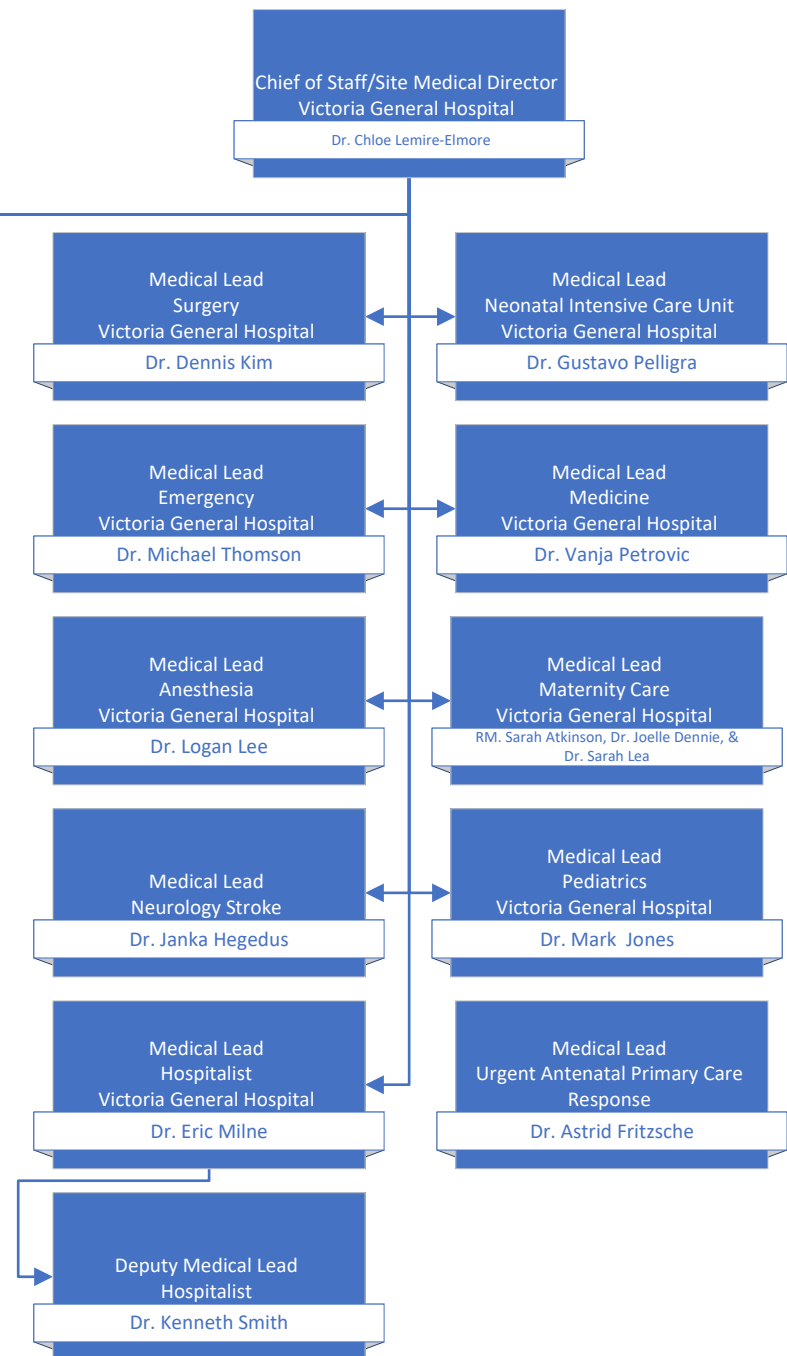
### Royal Jubilee Hospital (RJH)



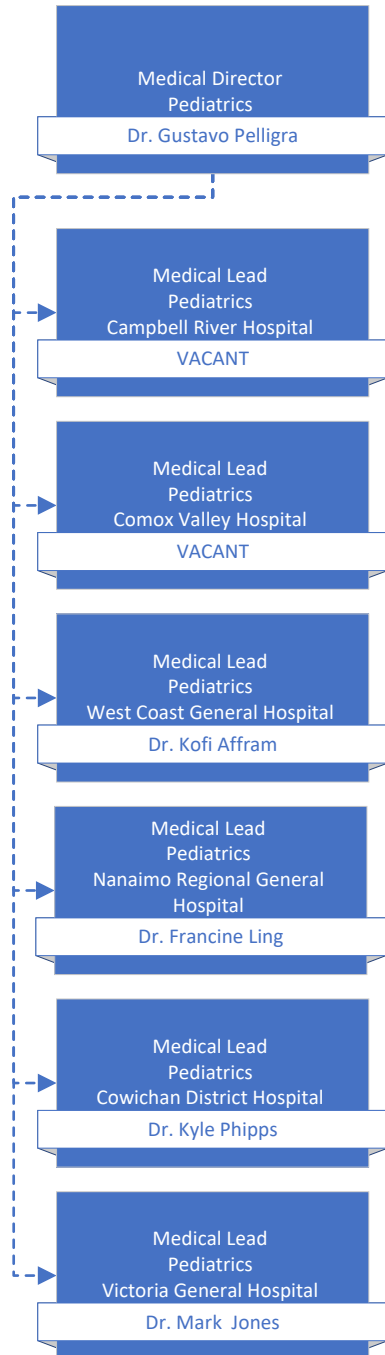
### RJH & VGH



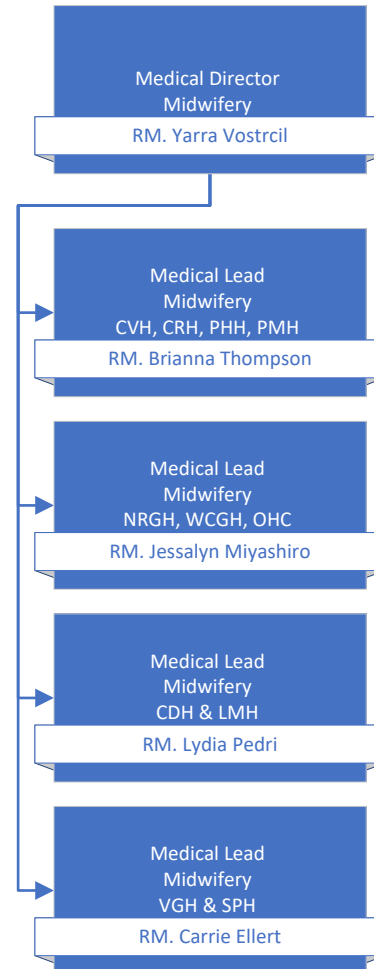
### Victoria General Hospital (VGH)



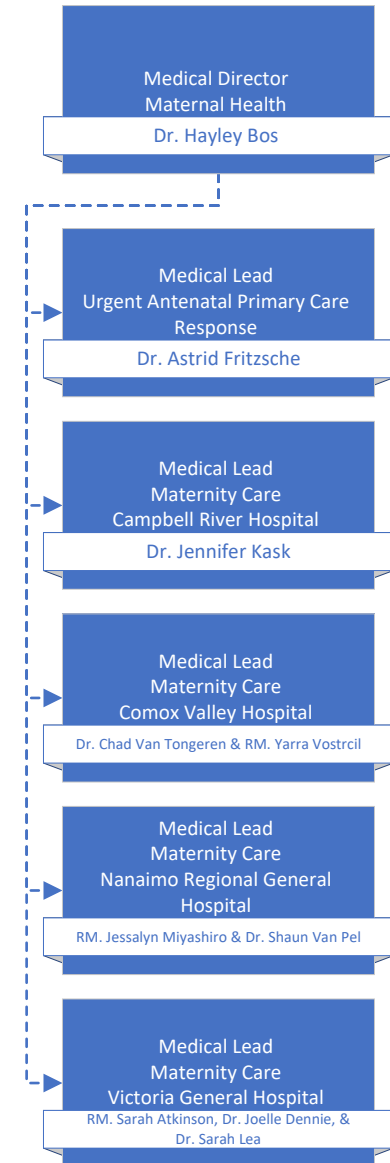
## Pediatrics Regional Strategy



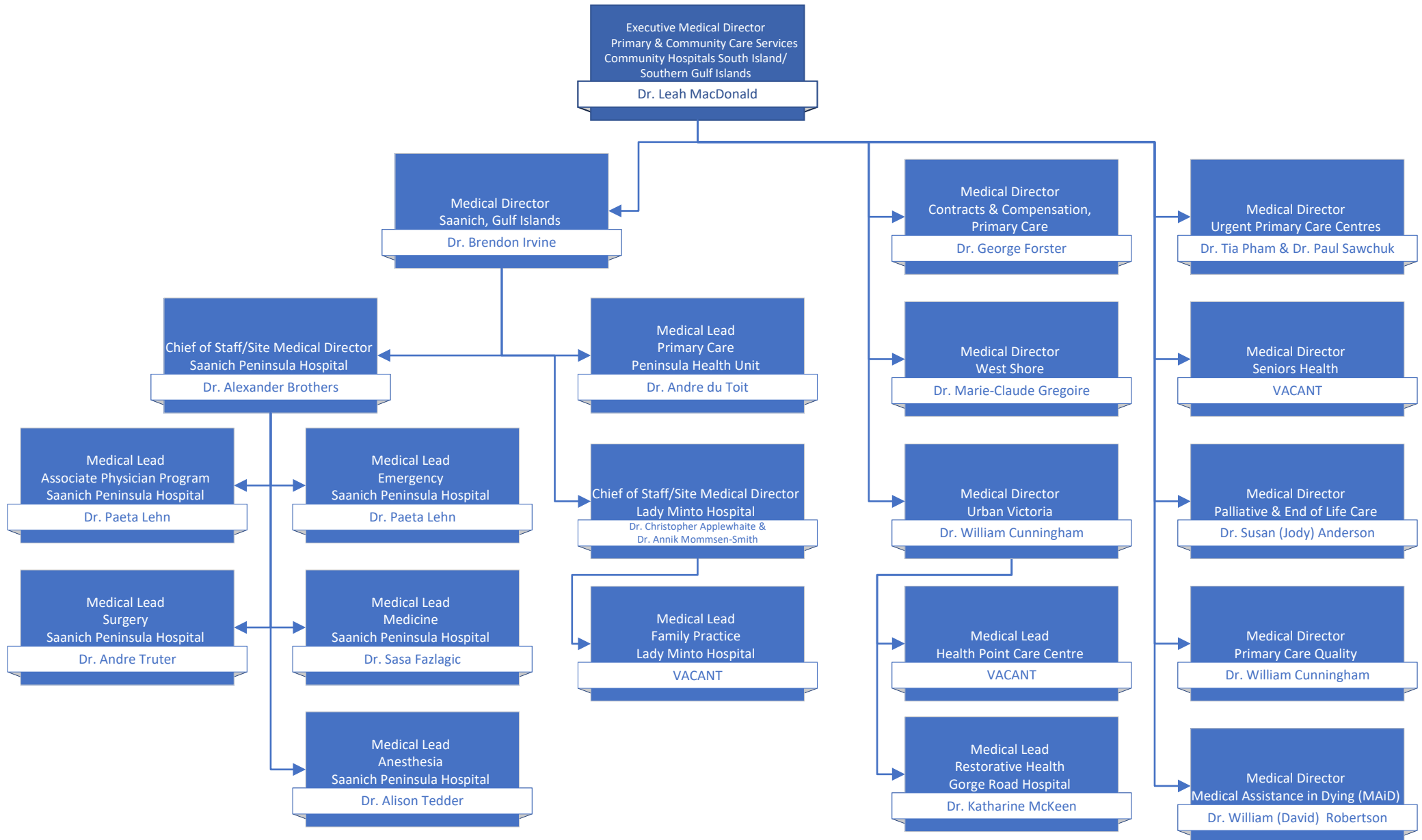
## Midwifery Regional Strategy



## Maternal Health Regional Strategy

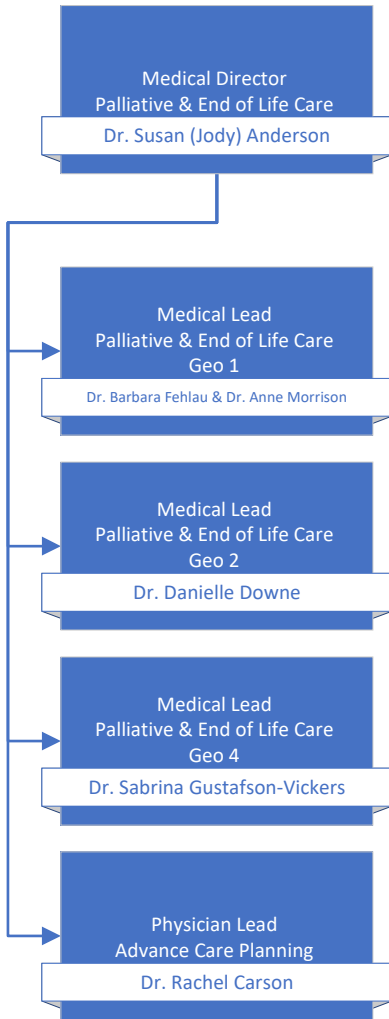


# Saanich Peninsula & Gulf Islands/Seniors & Primary Care

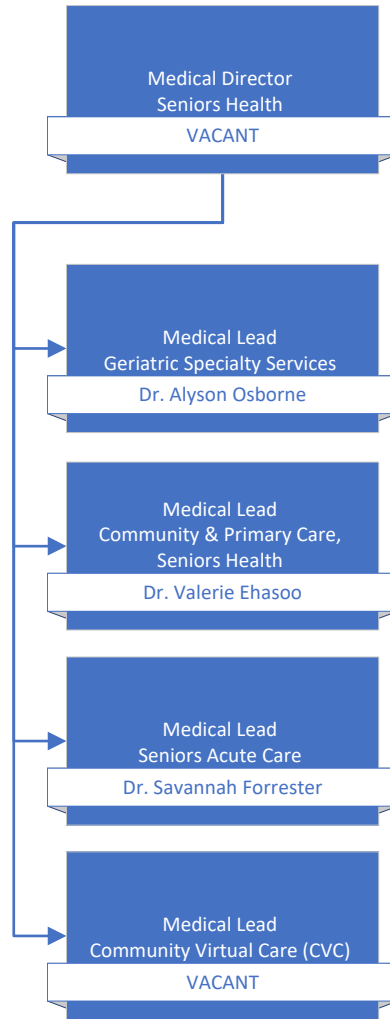




## Palliative & End of Life Care



## Seniors Health



## Urgent Primary Care Centres

