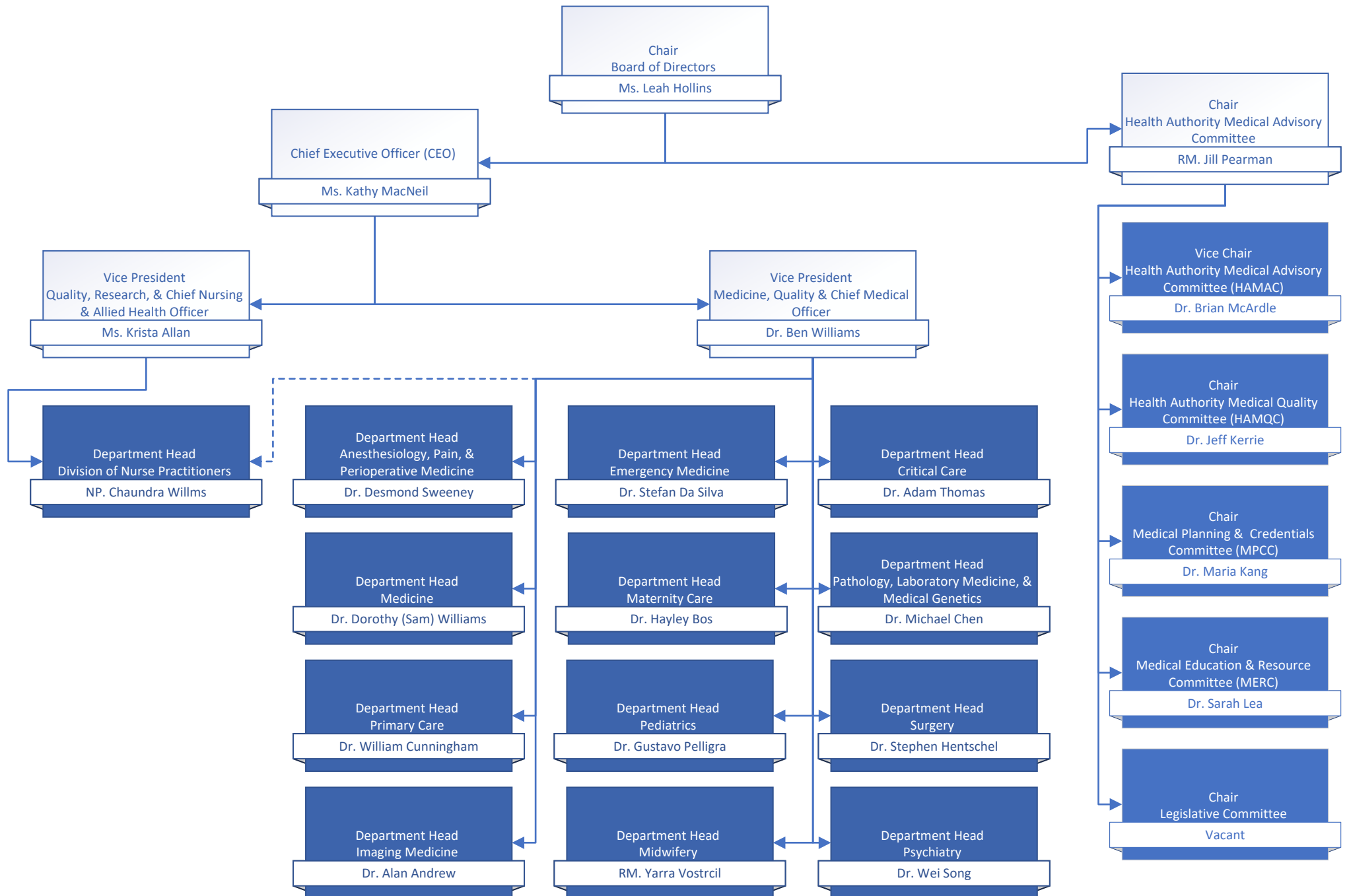


Medical Staff Leadership Organization Charts

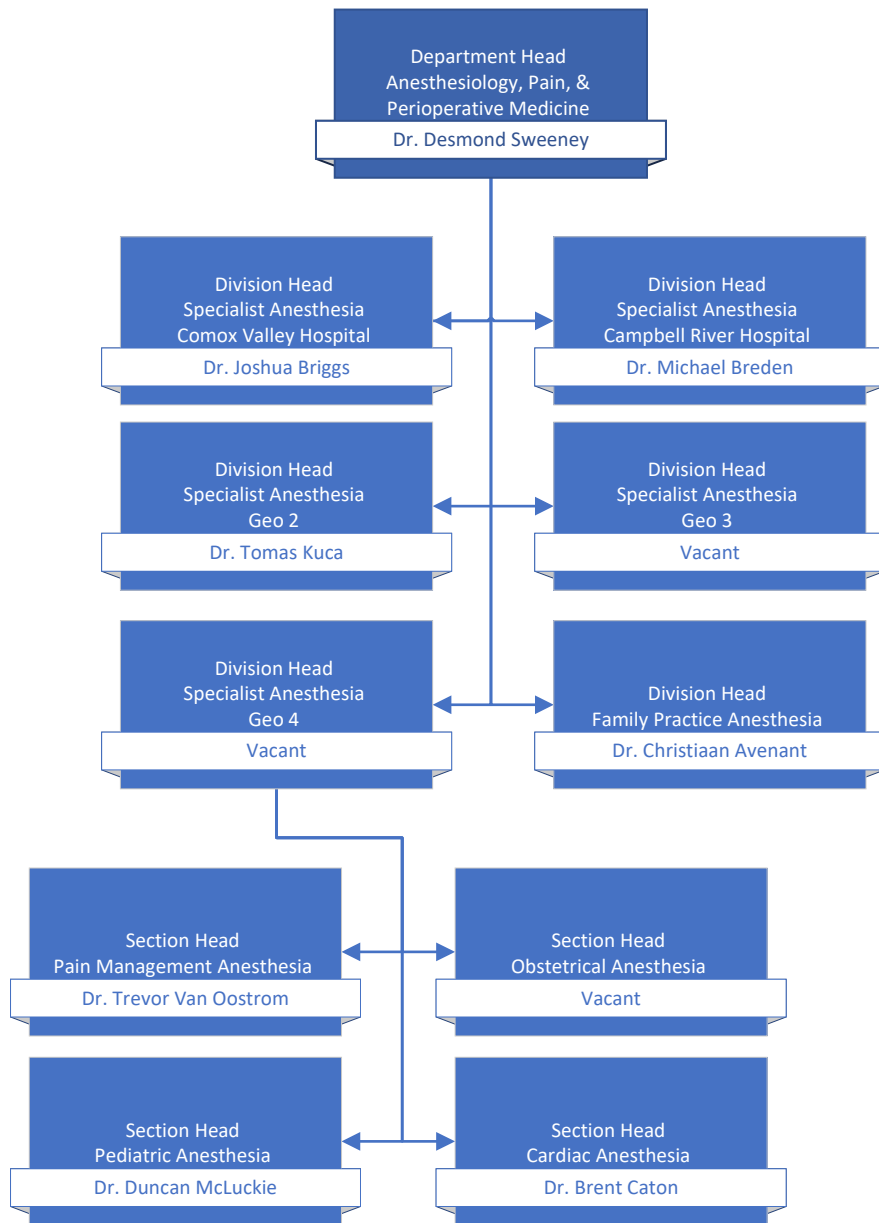


| Table of Contents | page # |
|--|-----------|
| Medical Staff Governance | 2 |
| Departments of: Anesthesiology, Pain, & Perioperative Medicine Emergency Medicine Critical Care | 3 |
| Departments of: Imaging Medicine Pathology, Laboratory Medicine, & Medical Genetics Psychiatry | 4 |
| Departments of: Maternity Care Pediatrics Midwifery Division of Nurse Practitioners | 5 |
| Department of Medicine | 6 |
| Department of Primary Care | 7 |
| Department of Surgery | 8 |
| Operational Executive Leadership | 9 |
| Medical & Academic Affairs | 10 |
| Medication Systems & Medical Informatics Quality & Safety | 11 |
| Surgery, Ambulatory Care, & Cancer Care Strategy | 12 |
| Mental Health & Substance Use Addiction Medicine | 13 |
| Comox Valley, Campbell River, Port Alberni & North Island/Long Term Care & Assisted Living | 14 |
| Comox Valley Hospital Campbell River Hospital West Coast General Hospital | 15 |
| Long Term Care Geo 1 & 2 | 16 |
| Long Term Care Geo 3 & 4 | 17 |
| Nanaimo/Imaging Medicine & Laboratory | 18 |
| Pathology, Laboratory Medicine, & Medical Genetics Operations Imaging Medicine Operations | 19 |
| Cowichan Valley | 20 |
| Greater Victoria Acute Care/Pediatrics, Midwifery, & Maternal Health | 21 |
| Royal Jubilee Hospital Victoria General Hospital | 22 |
| Pediatrics Operations Midwifery Operations Maternal Health Operations | 23 |
| Saanich Peninsula & Gulf Islands/Seniors & Primary Care | 24 |
| Palliative & End of Life Care Seniors Health Urgent Primary Care Centres | 25 |

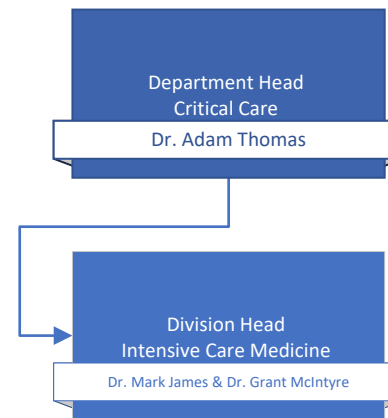
Medical Staff Governance



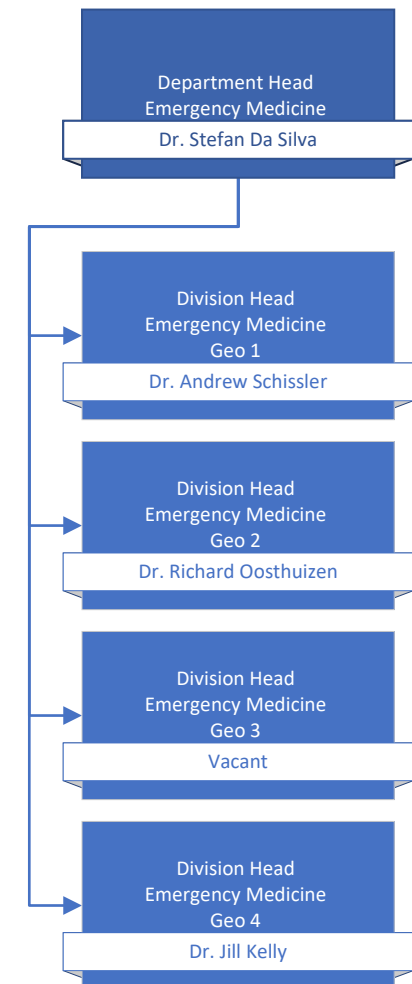
Department of Anesthesiology, Pain, & Perioperative Medicine



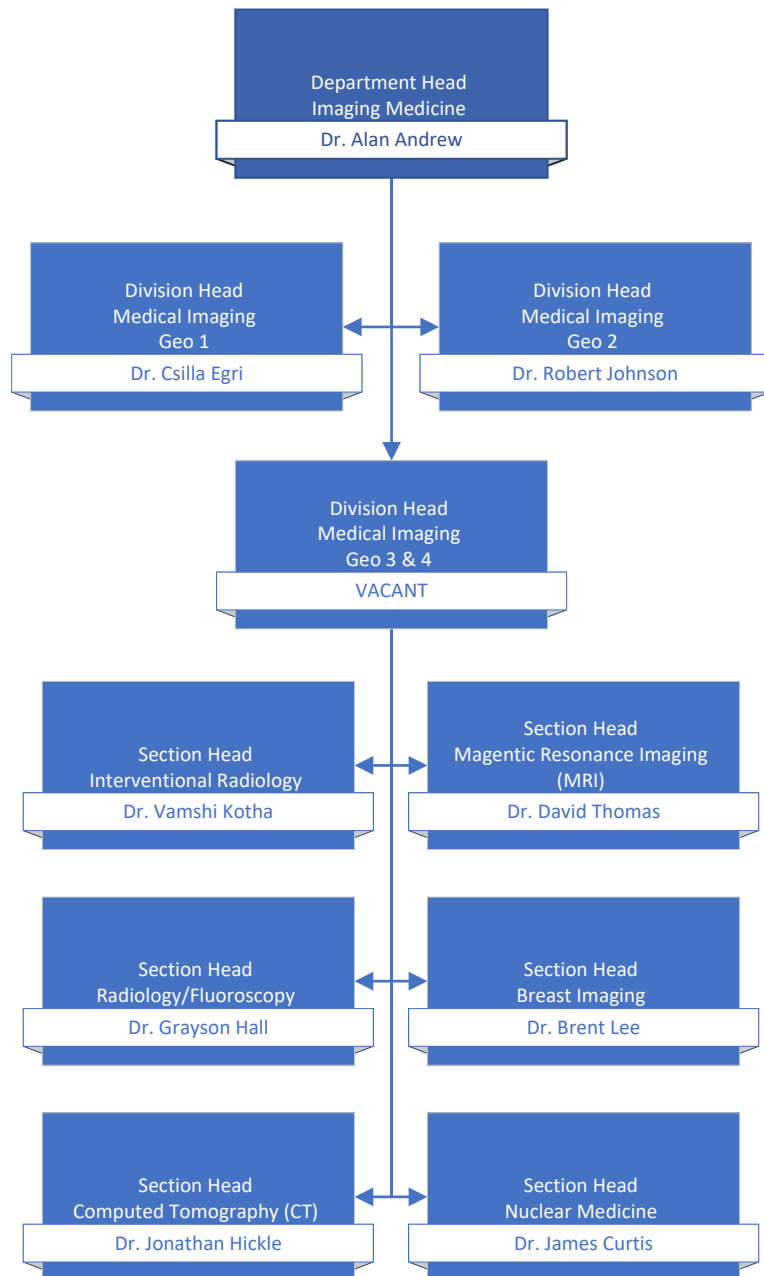
Department of Critical Care



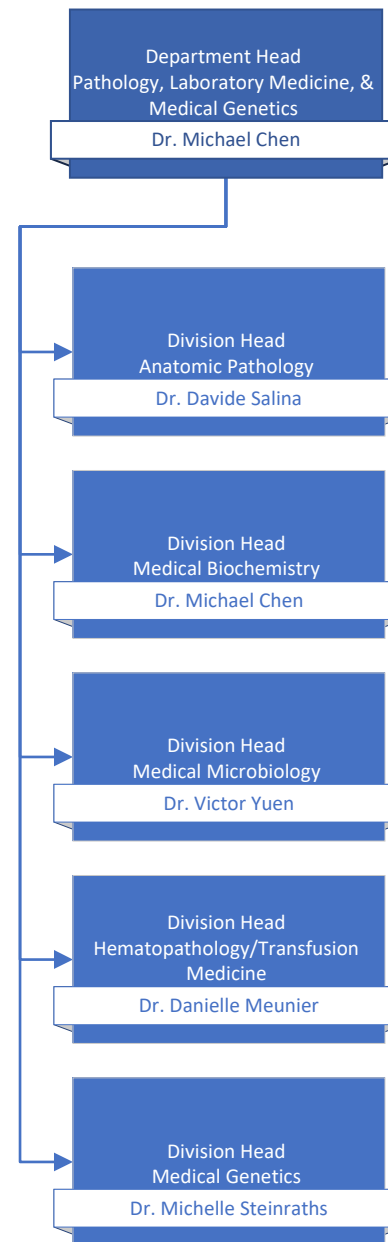
Department of Emergency Medicine



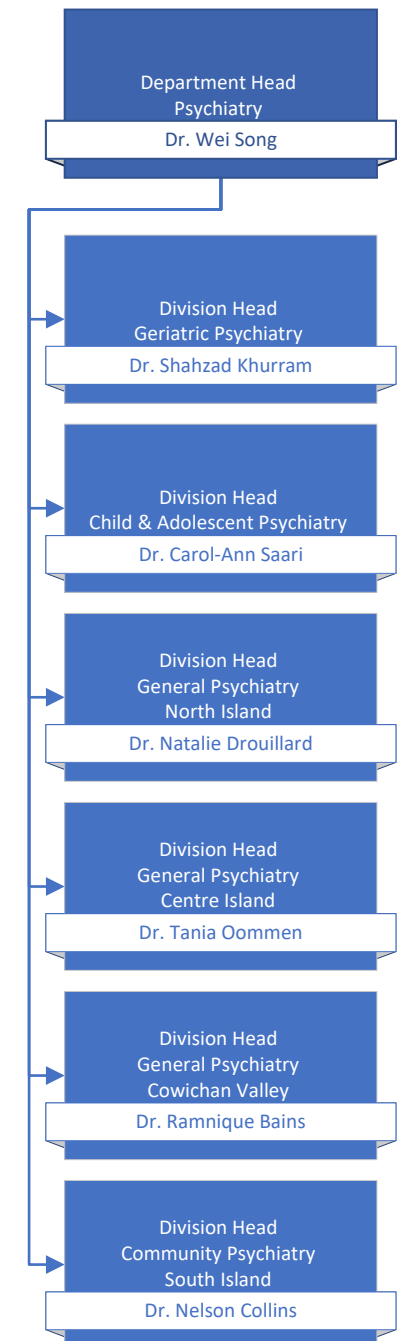
Department of Imaging Medicine



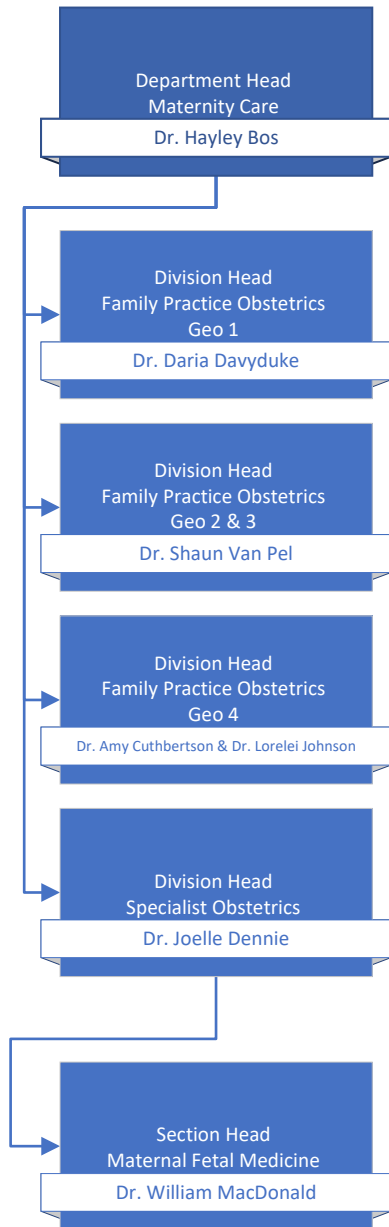
Department of Pathology, Laboratory Medicine, & Medical Genetics



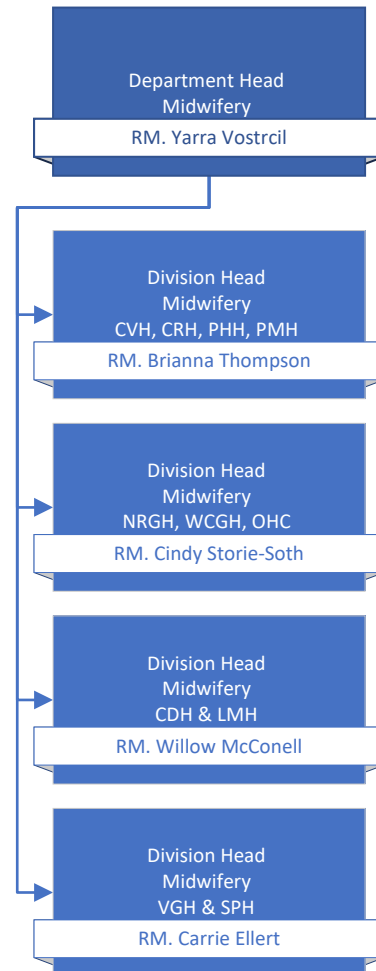
Department of Psychiatry



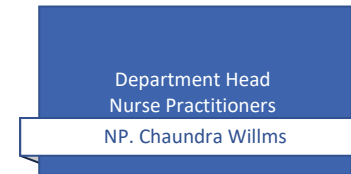
Department of Maternity Care



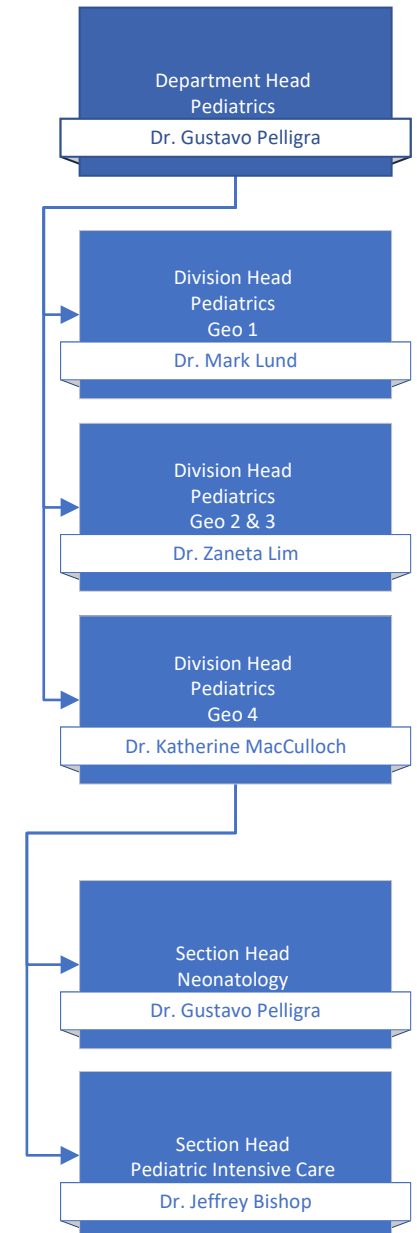
Department of Midwifery



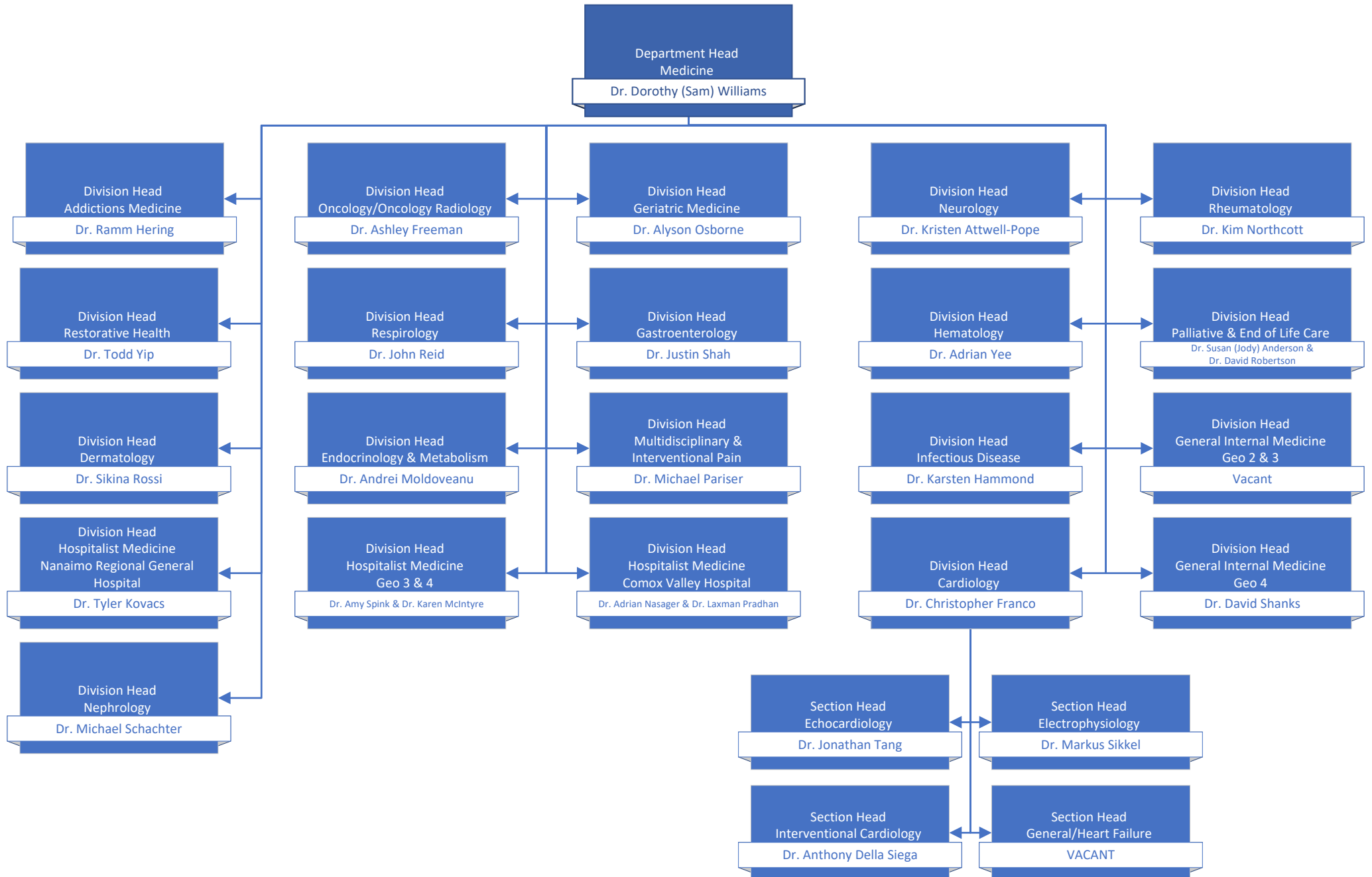
Department of Nurse Practitioners



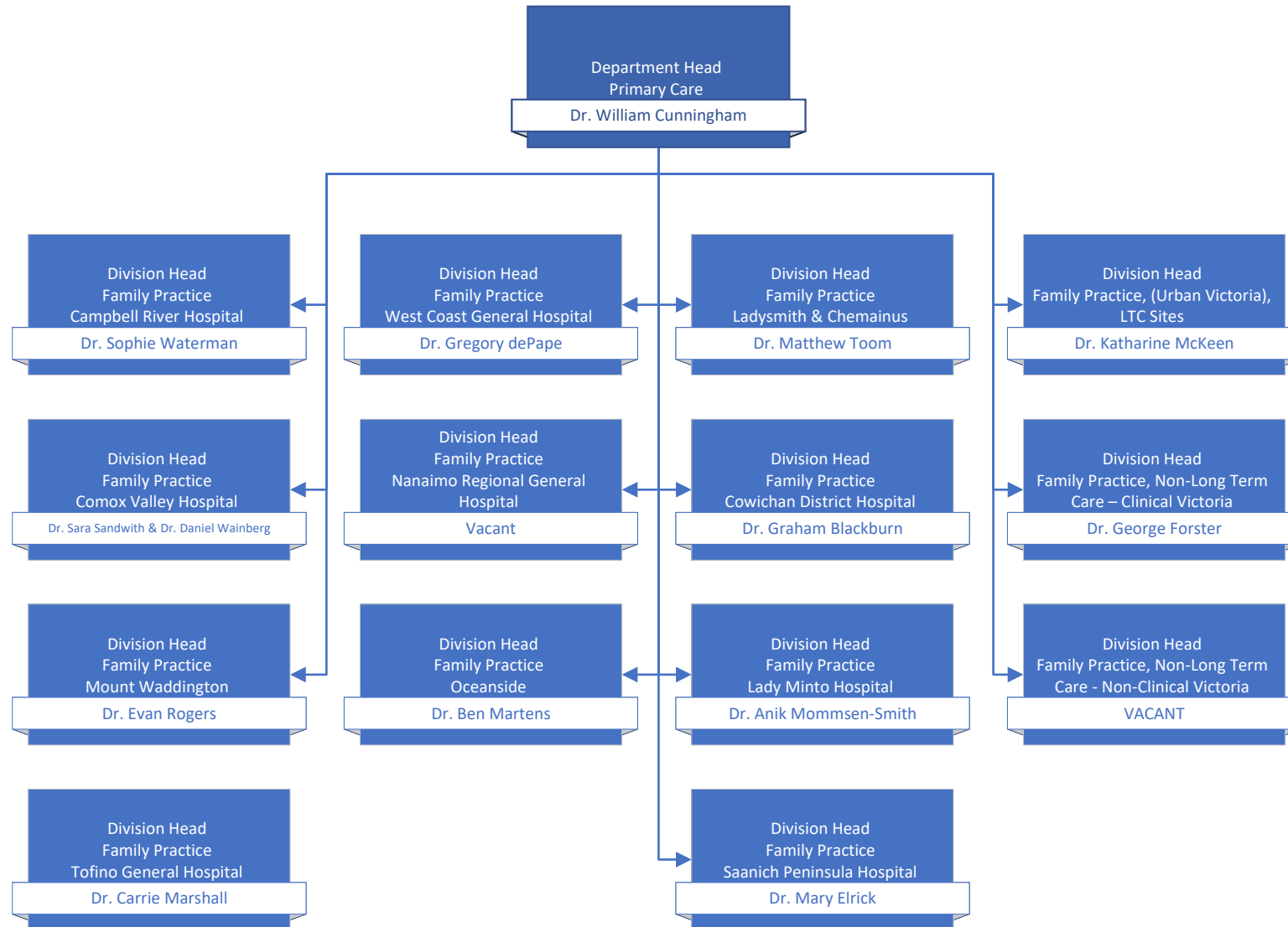
Department of Pediatrics



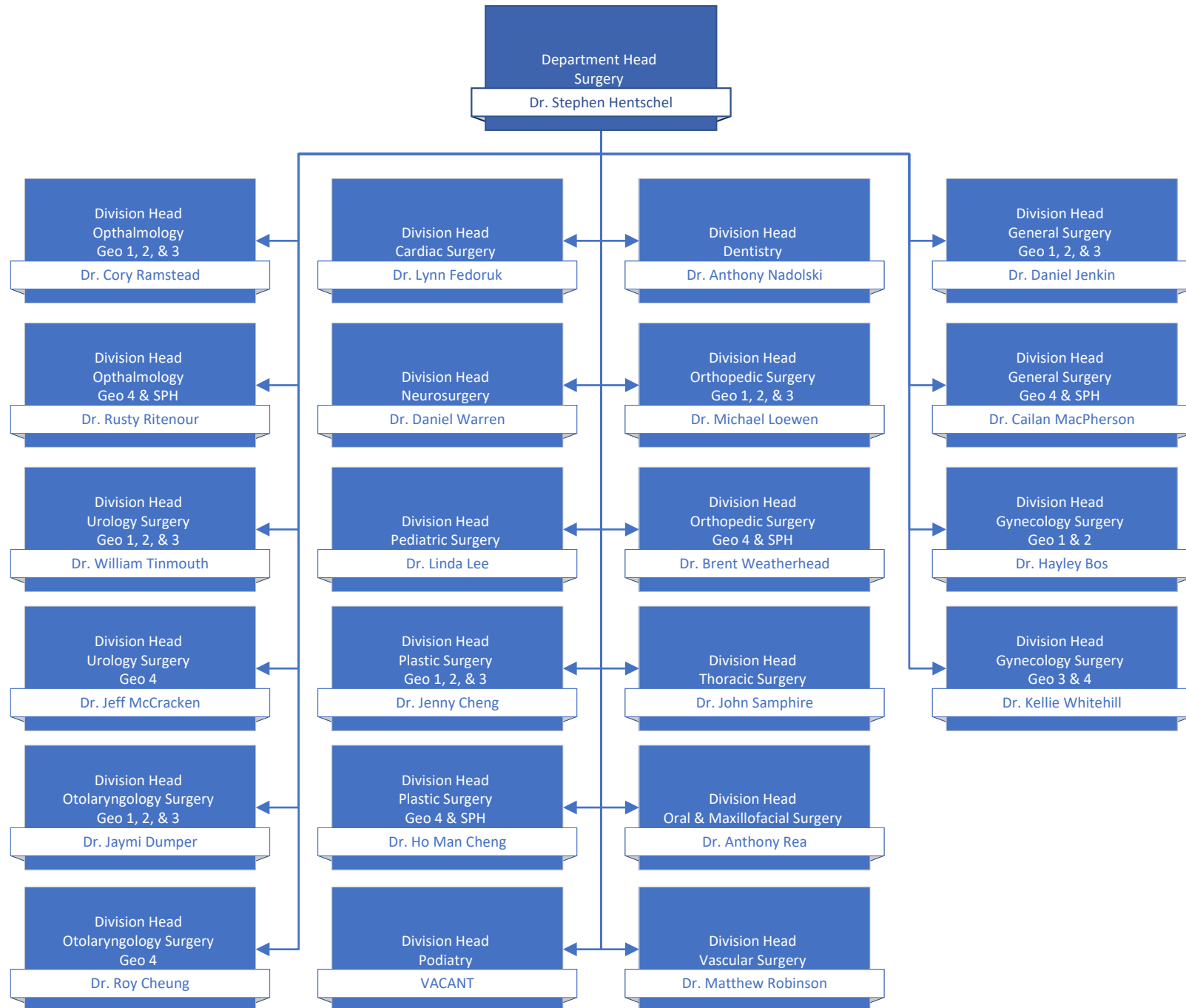
Department of Medicine



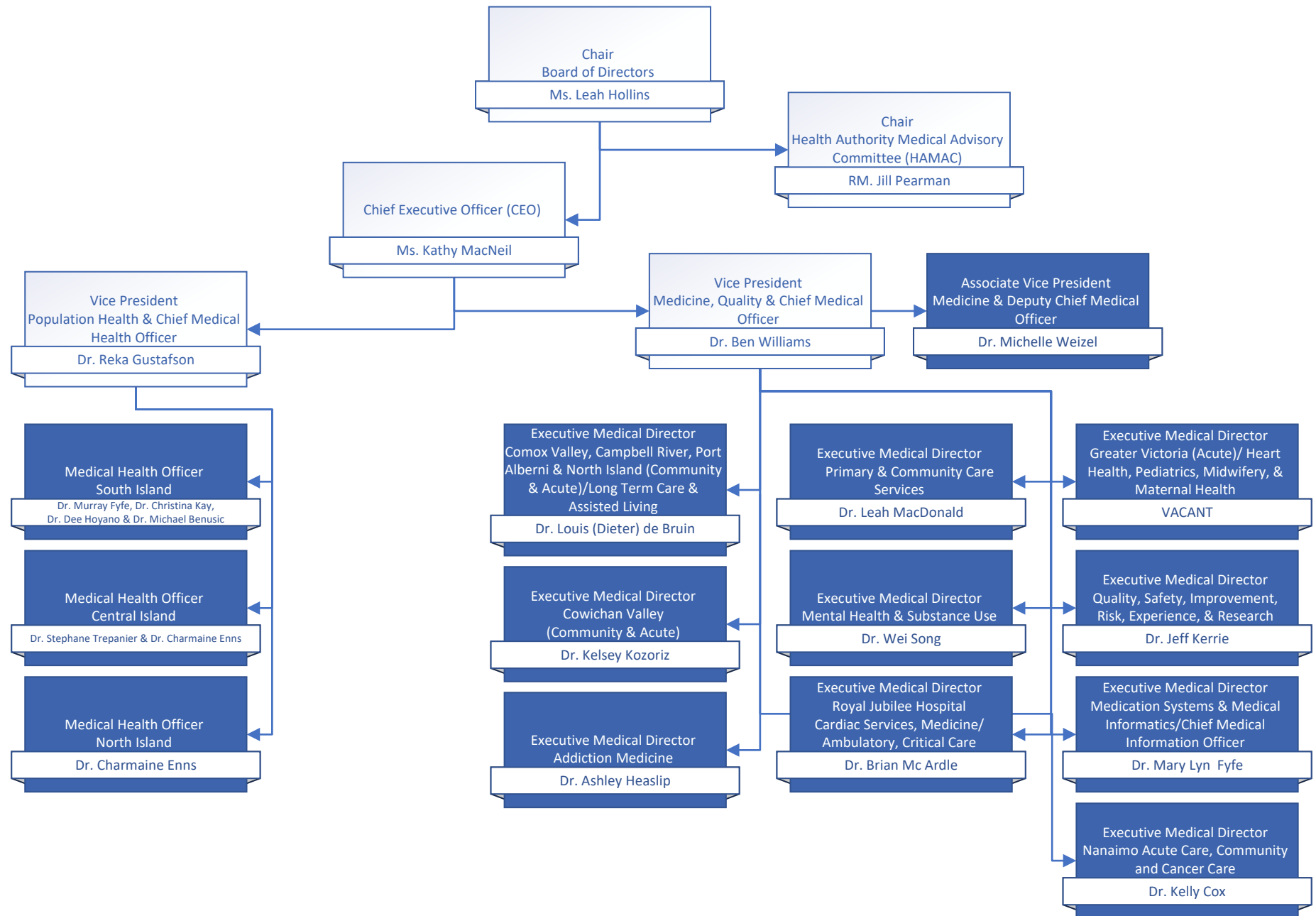
Department of Primary Care



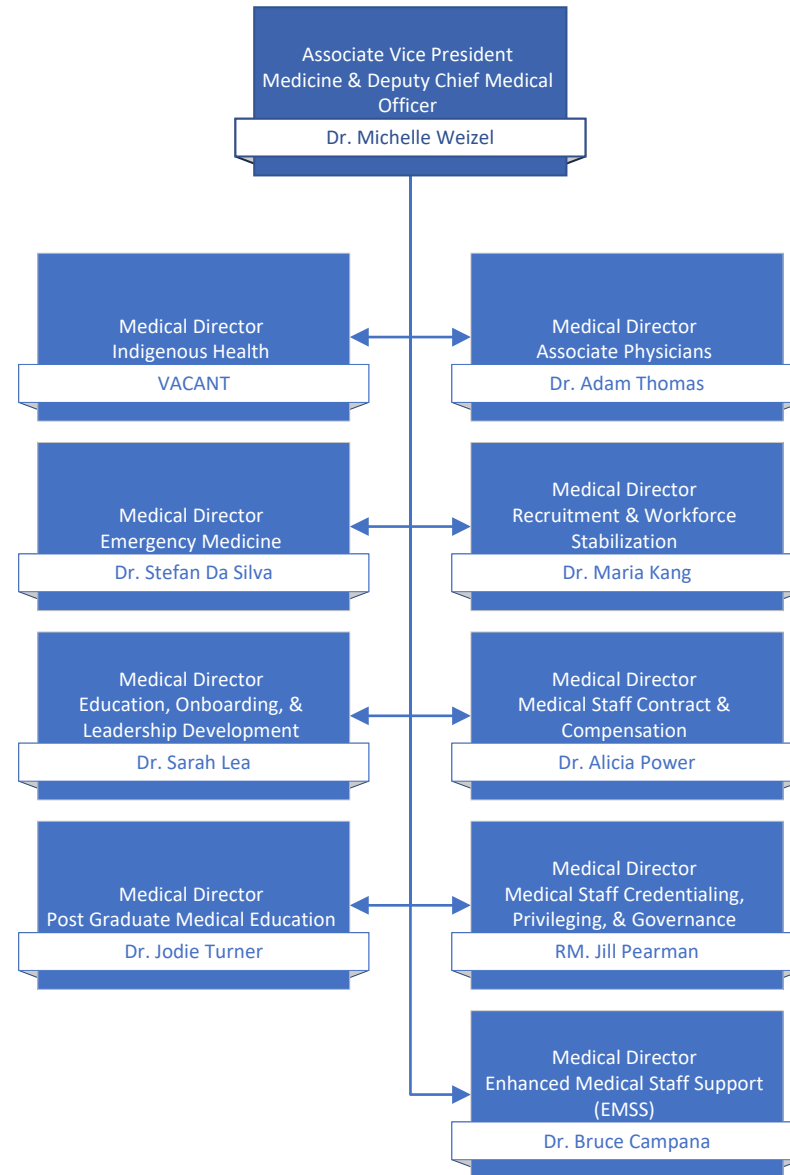
Department of Surgery



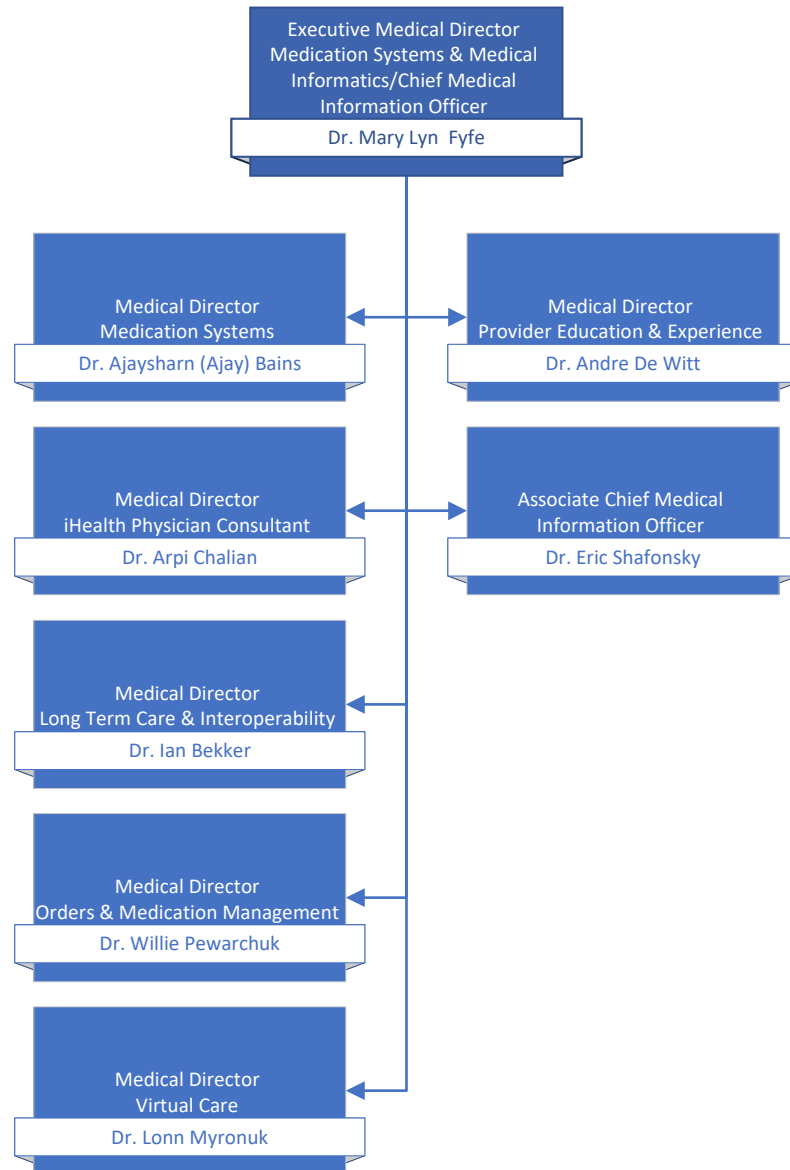
Operational Executive Leadership



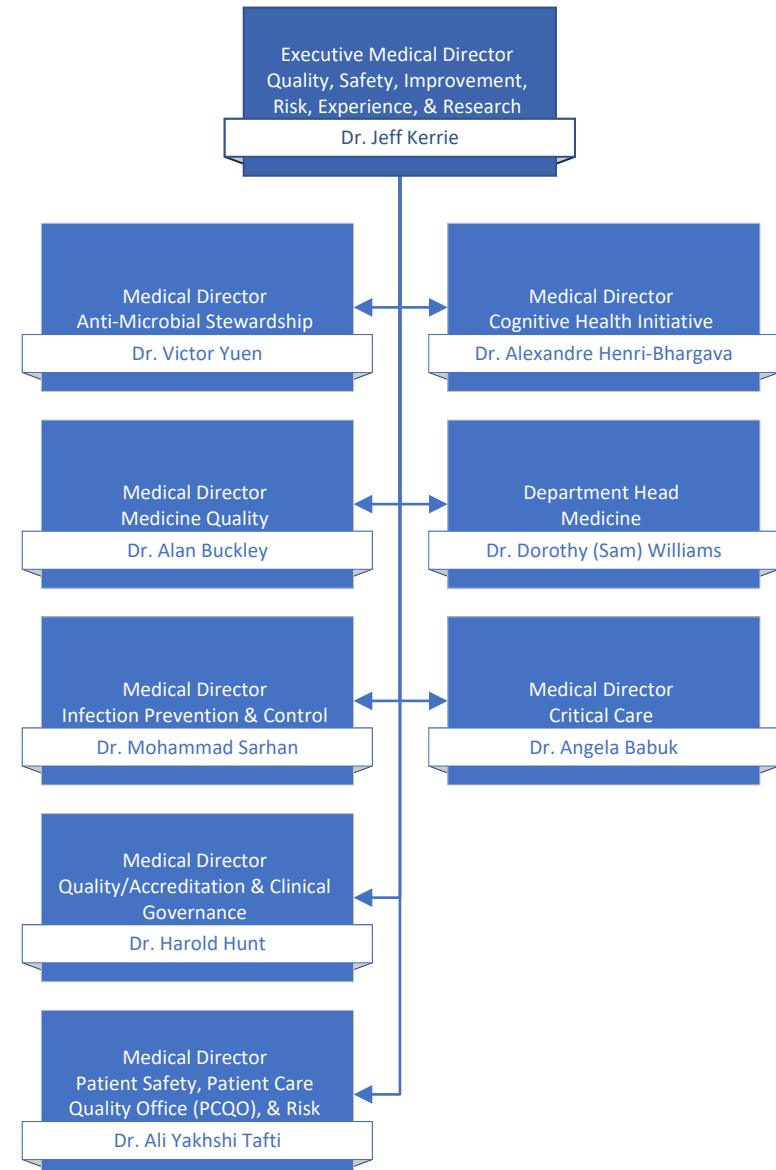
Medical & Academic Affairs



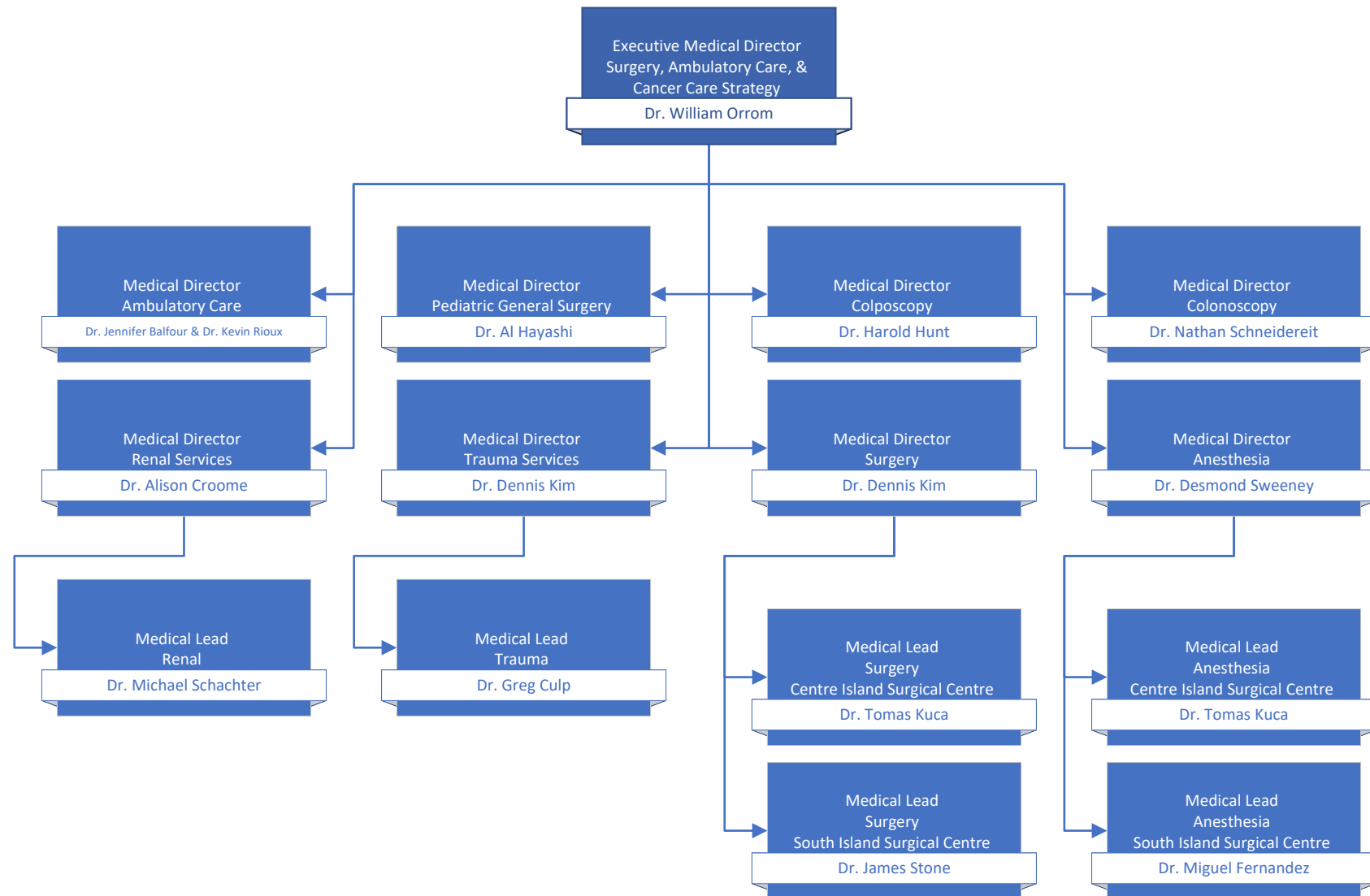
Medication Systems & Medical Informatics



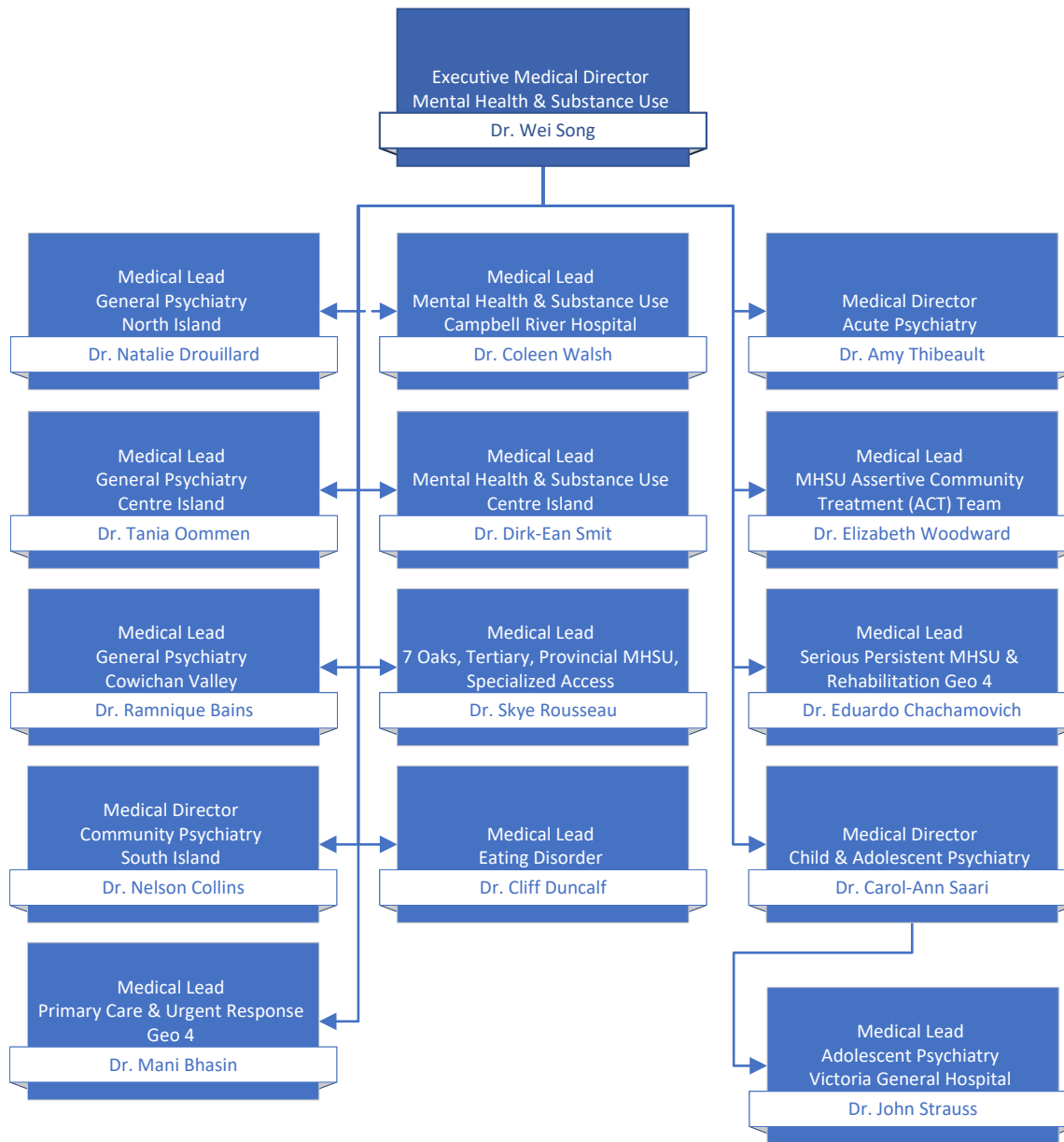
Quality & Safety



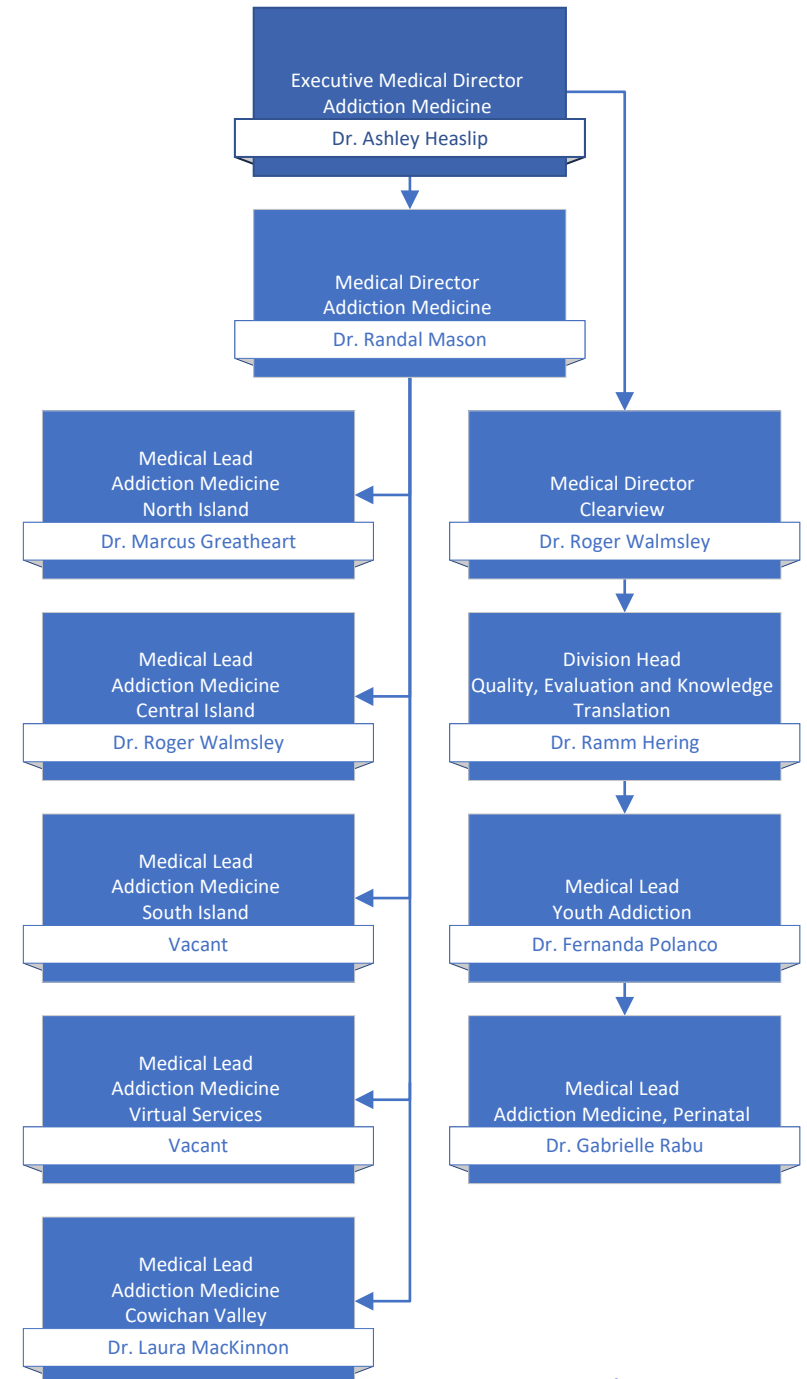
Surgery, Ambulatory Care, & Cancer Care Strategy



Mental Health & Substance Use



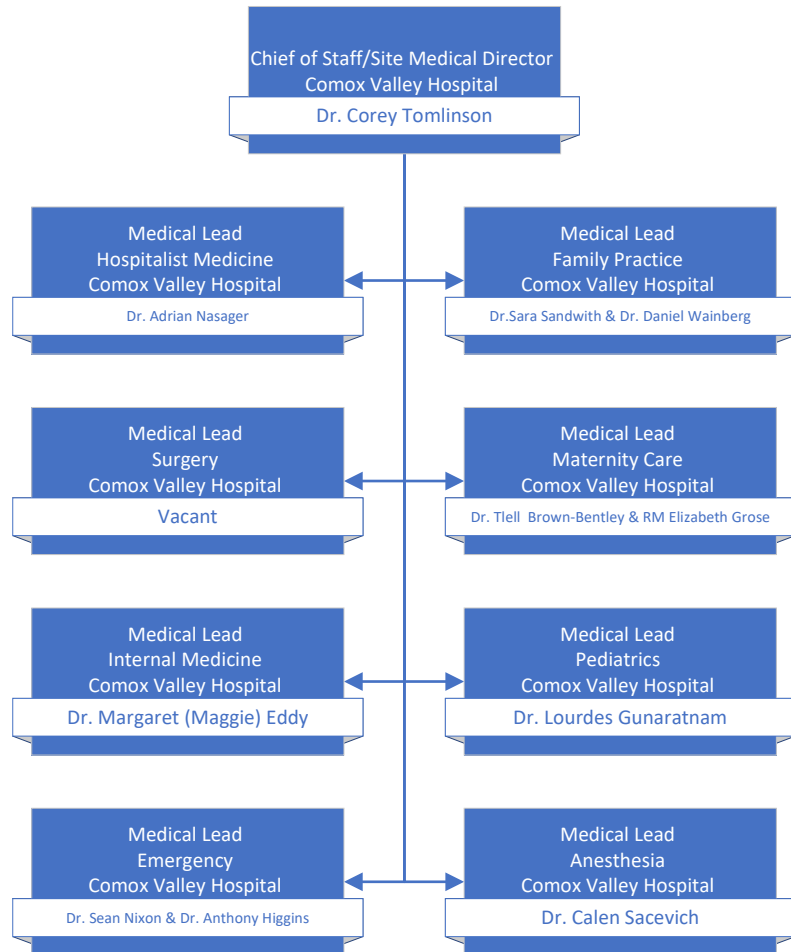
Addiction Medicine



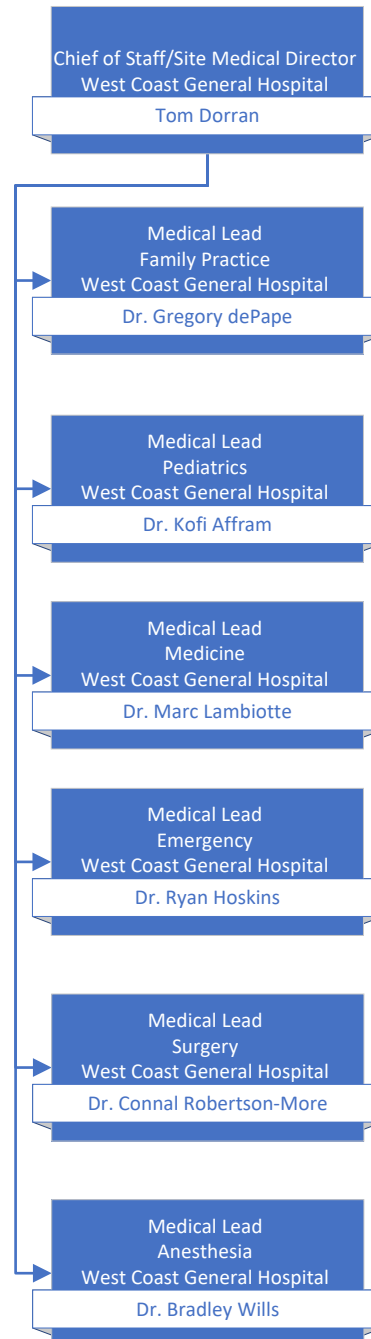
Comox Valley, Campbell River, Port Alberni & North Island/Long Term Care & Assisted Living



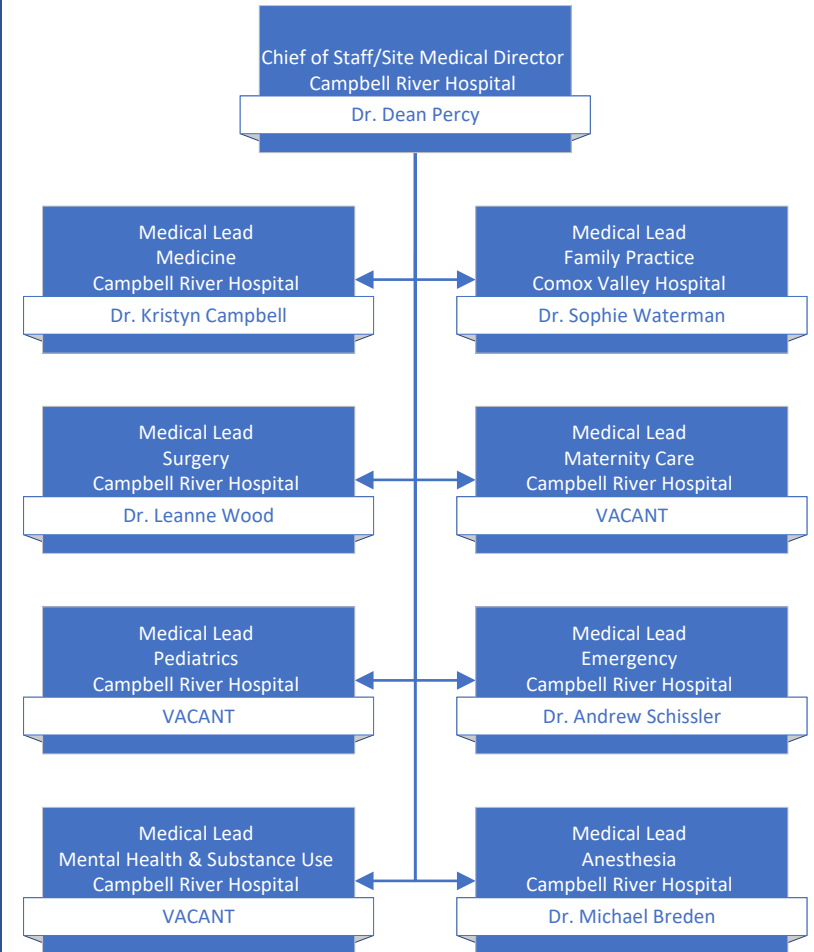
Comox Valley Hospital



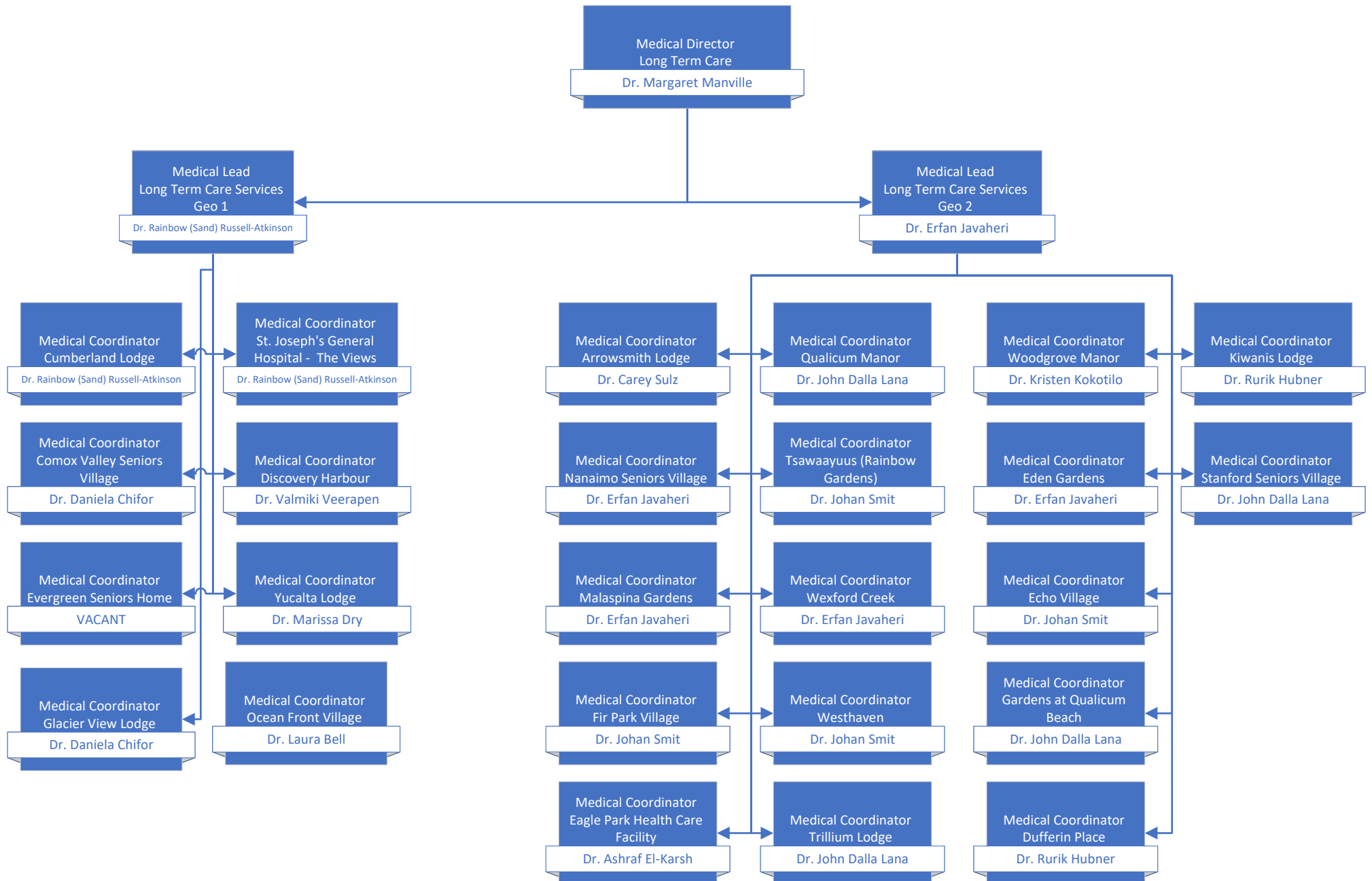
West Coast General Hospital



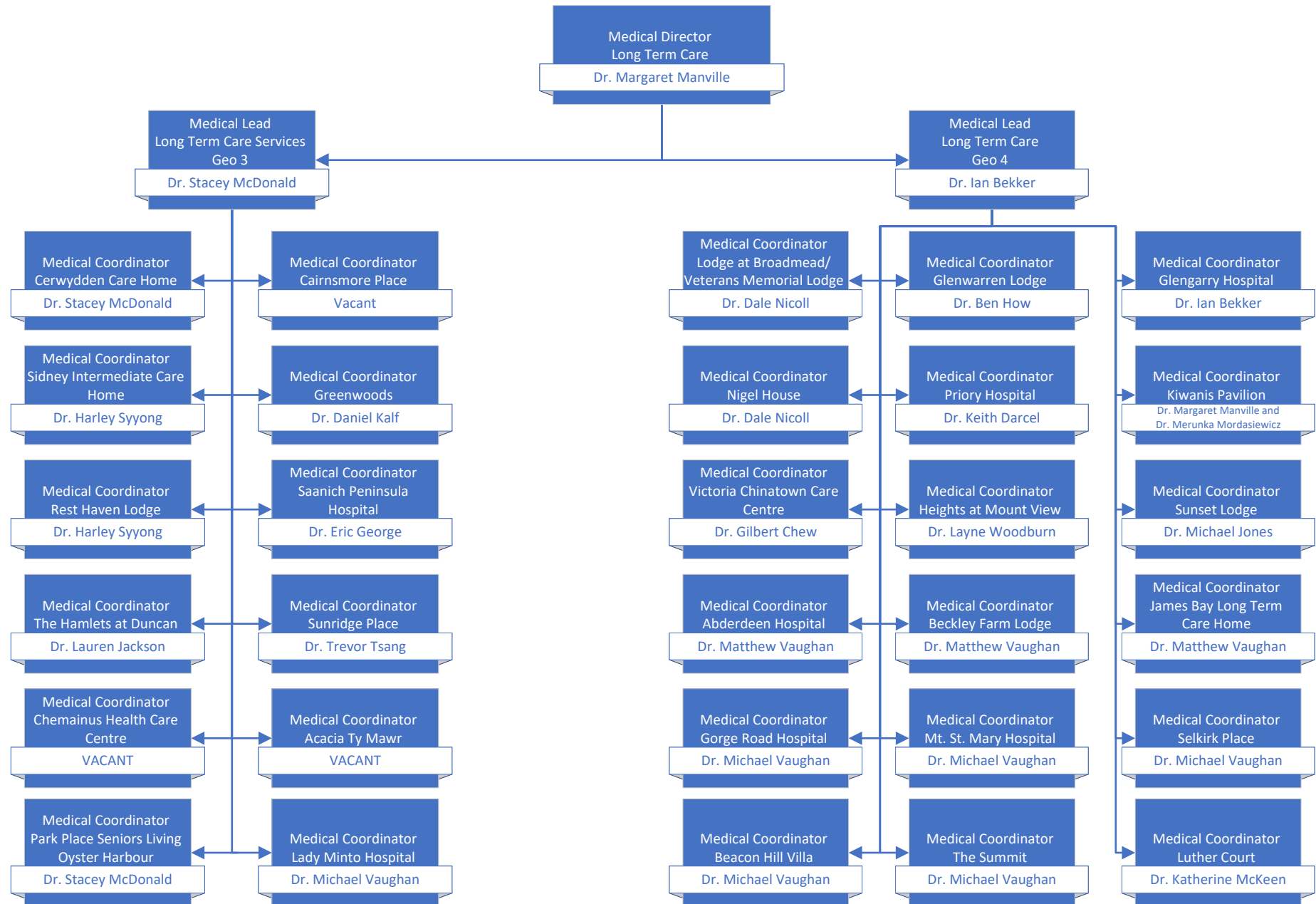
Campbell River Hospital



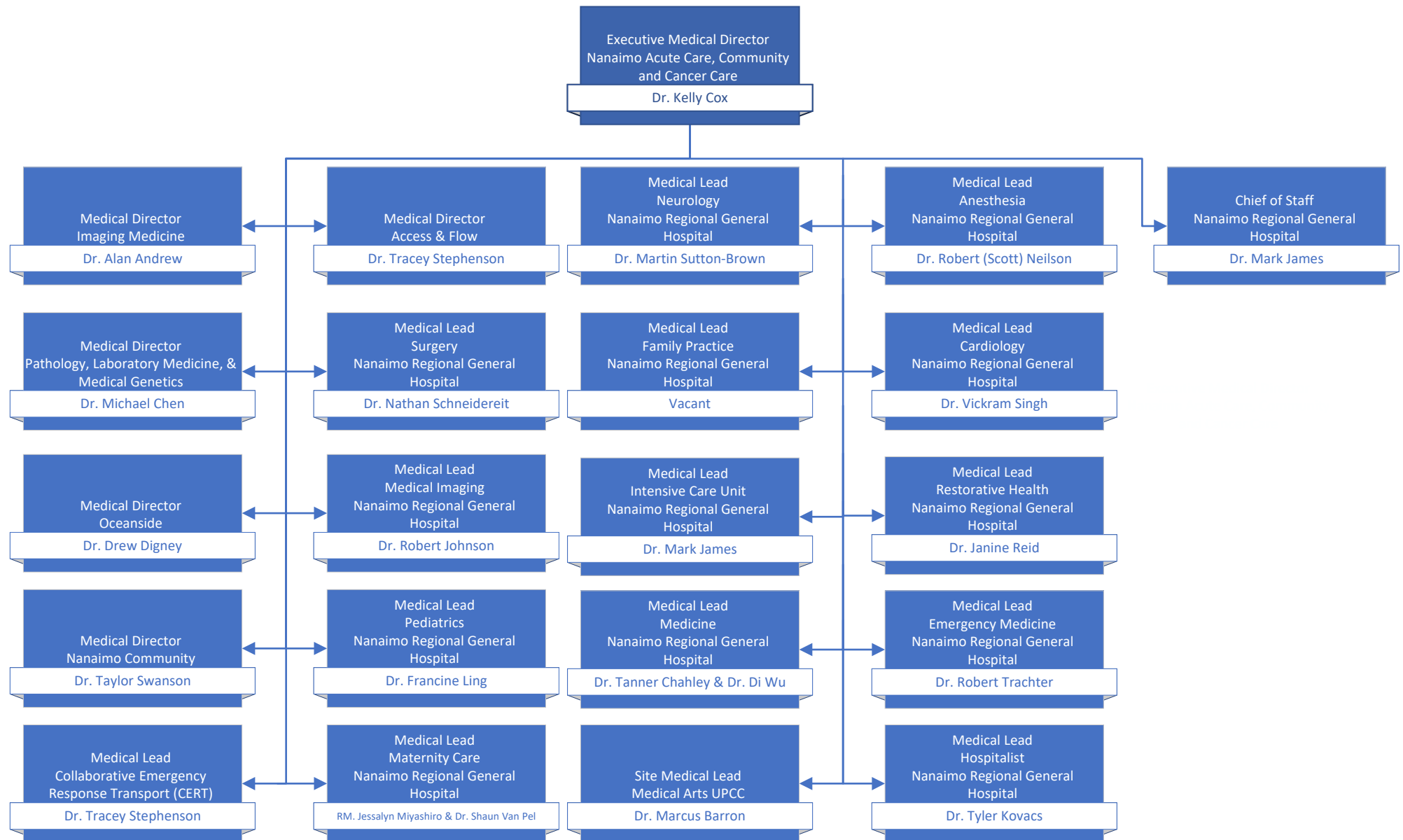
Long Term Care (Geo 1 & 2)



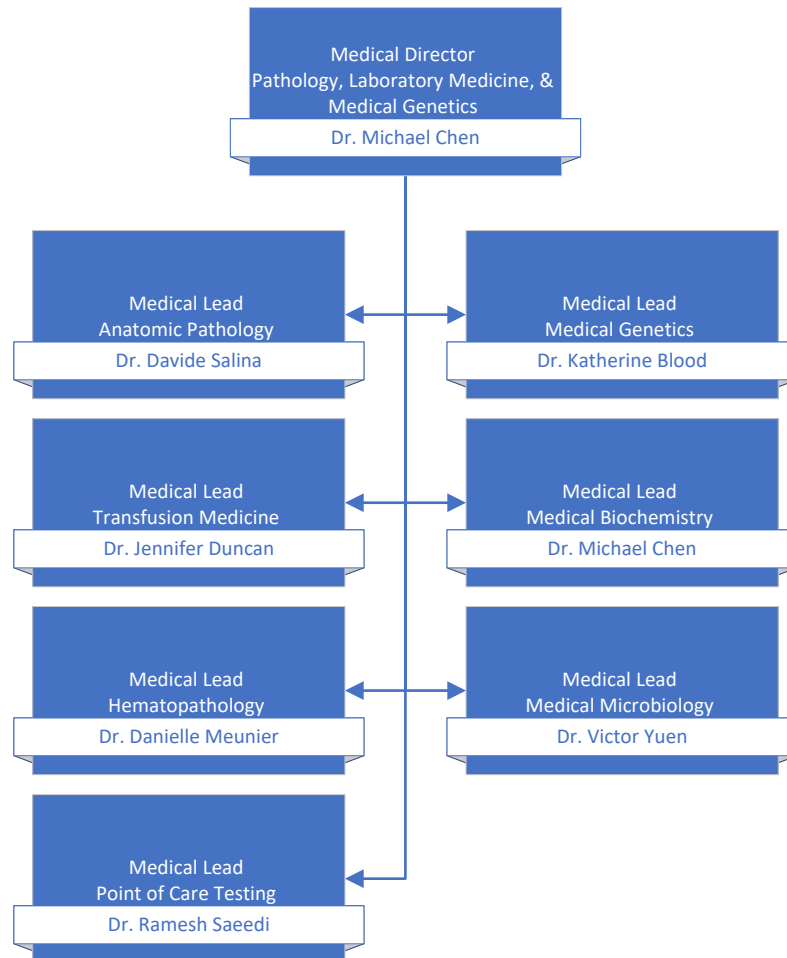
Long Term Care (Geo 3 & 4)



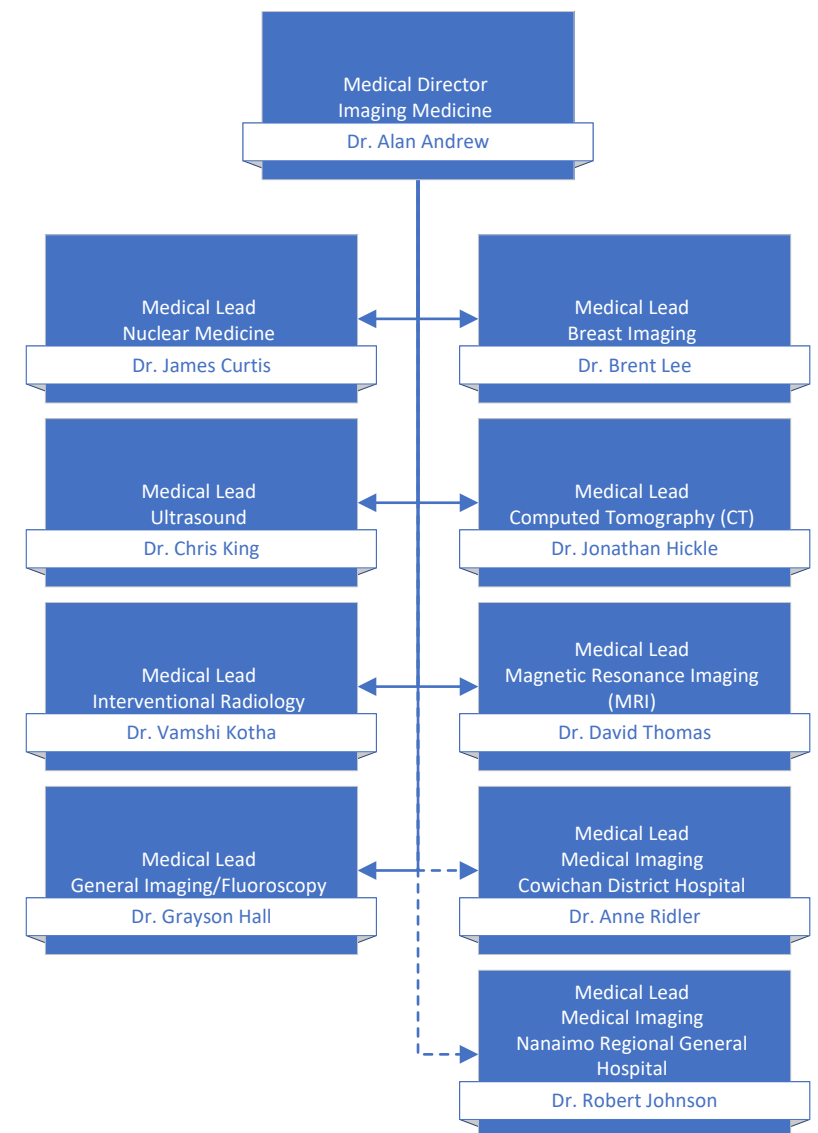
Nanaimo/ Medical Imaging & Laboratory Medicine



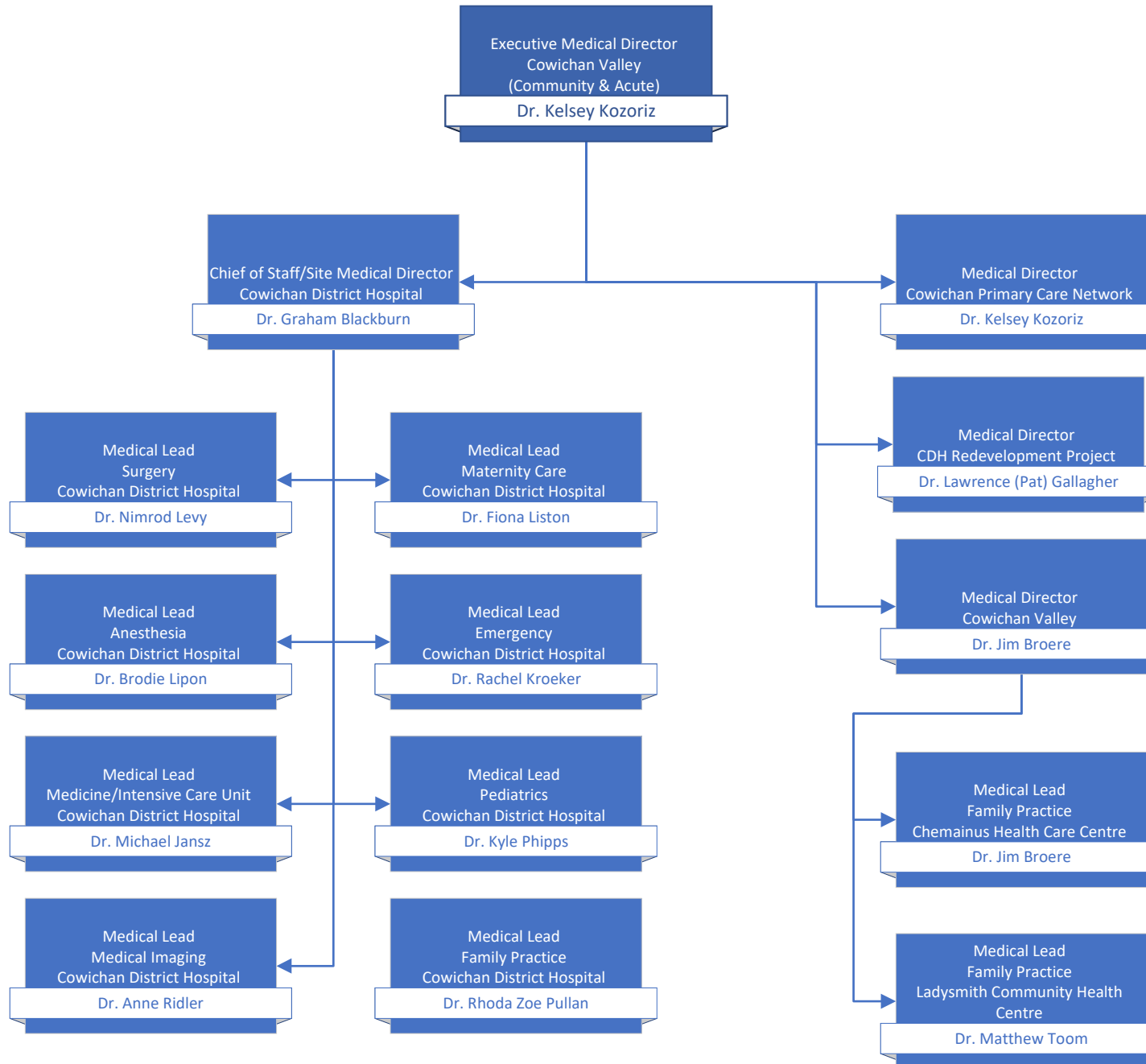
Pathology, Laboratory Medicine, & Medical Genetics Operations



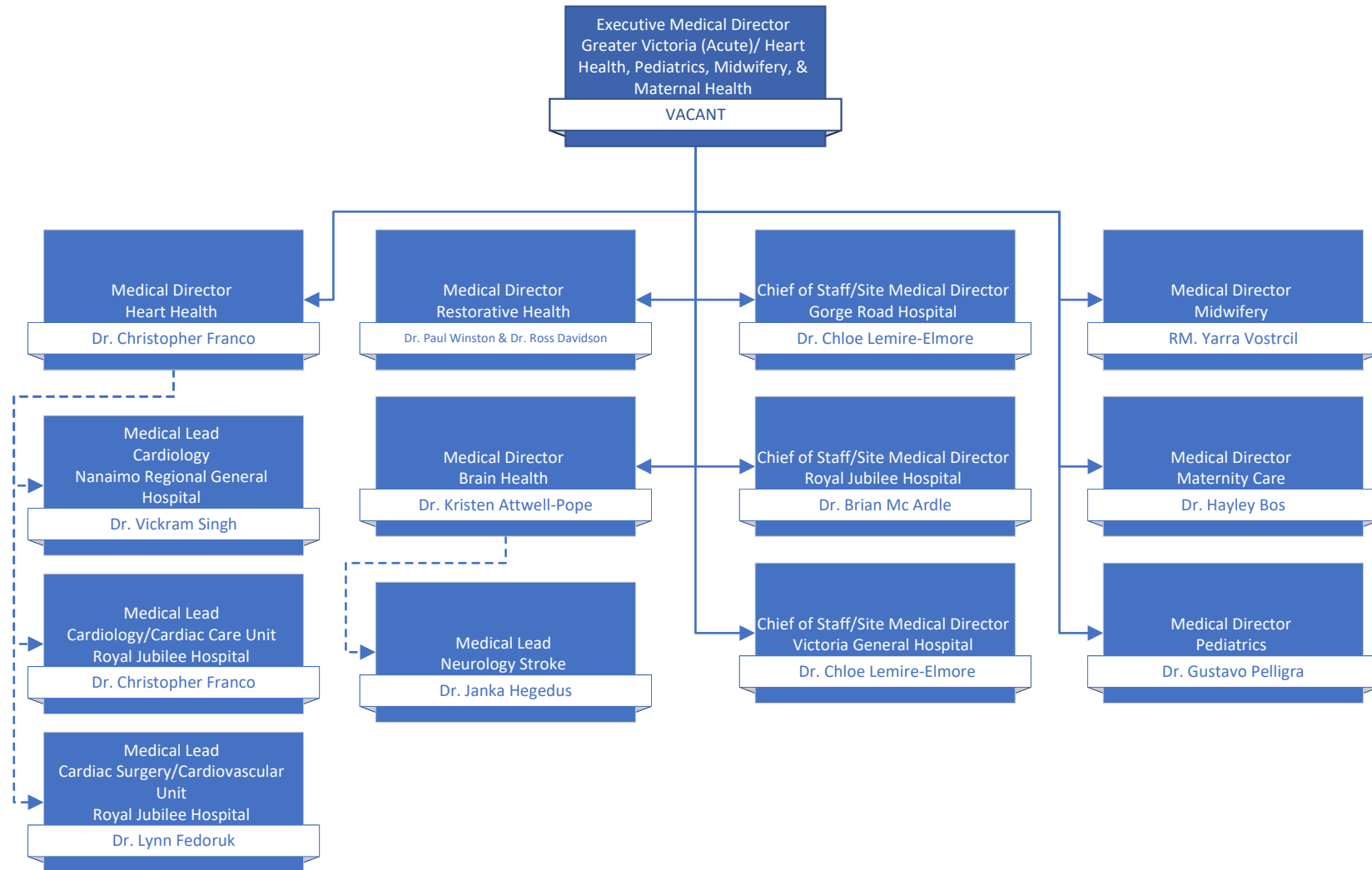
Imaging Medicine Operations



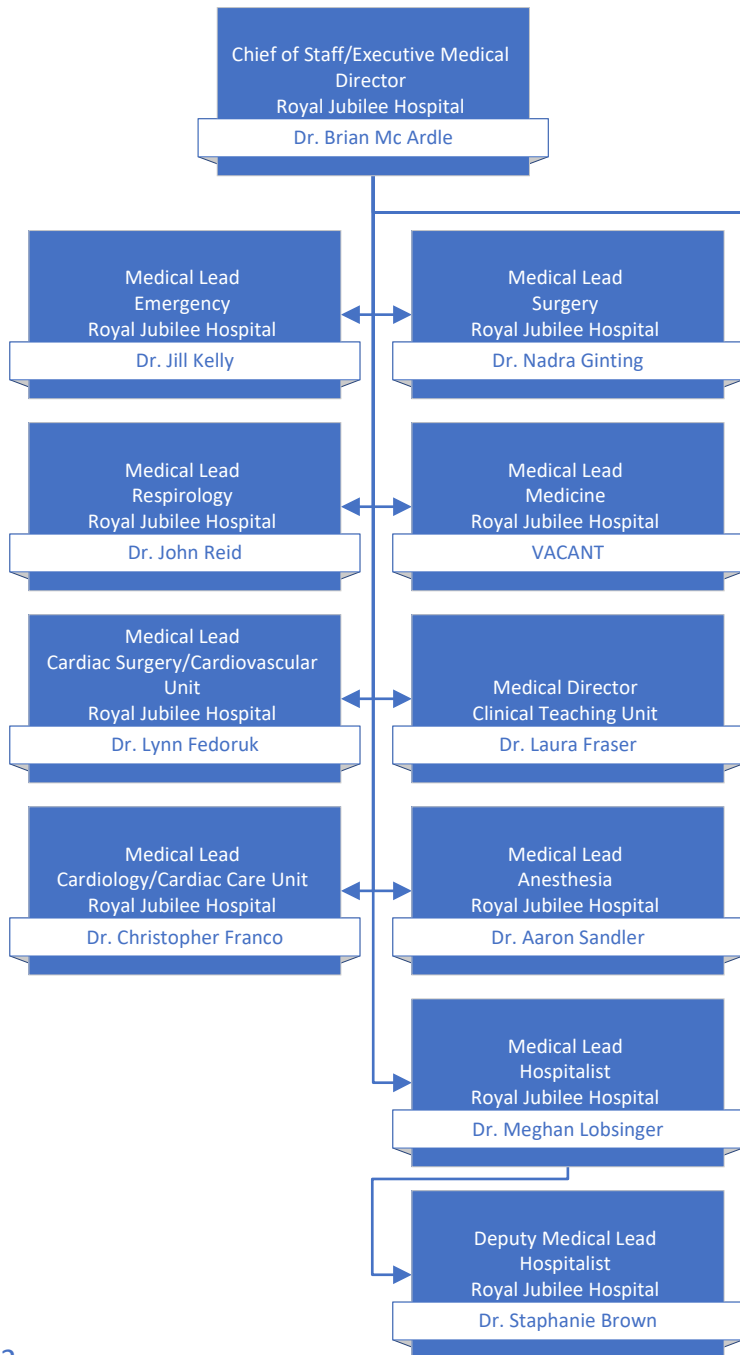
Cowichan Valley



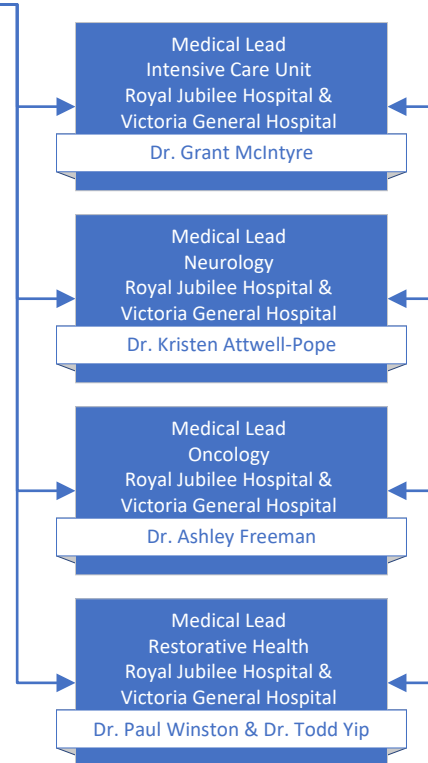
Greater Victoria Acute Care/Pediatrics, Midwifery, & Maternal Health



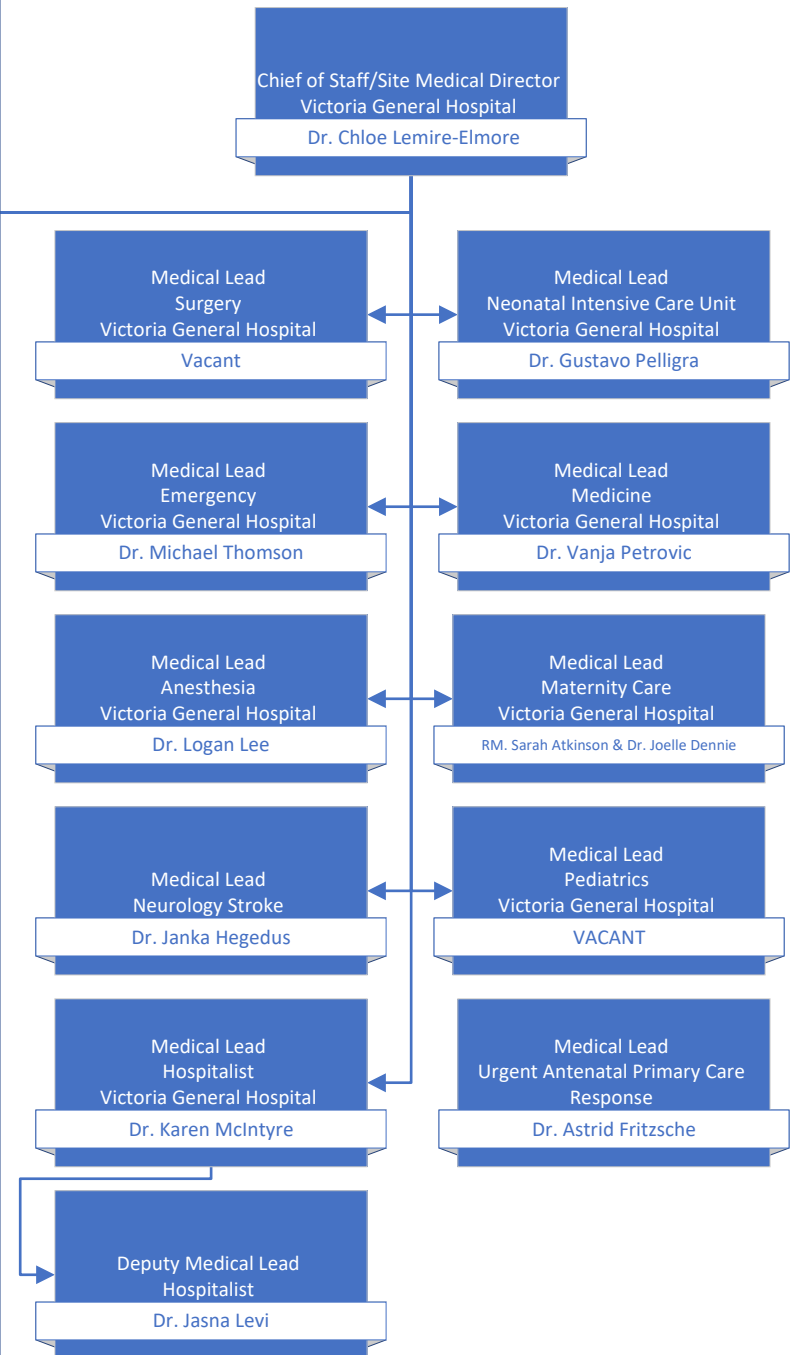
Royal Jubilee Hospital (RJH)



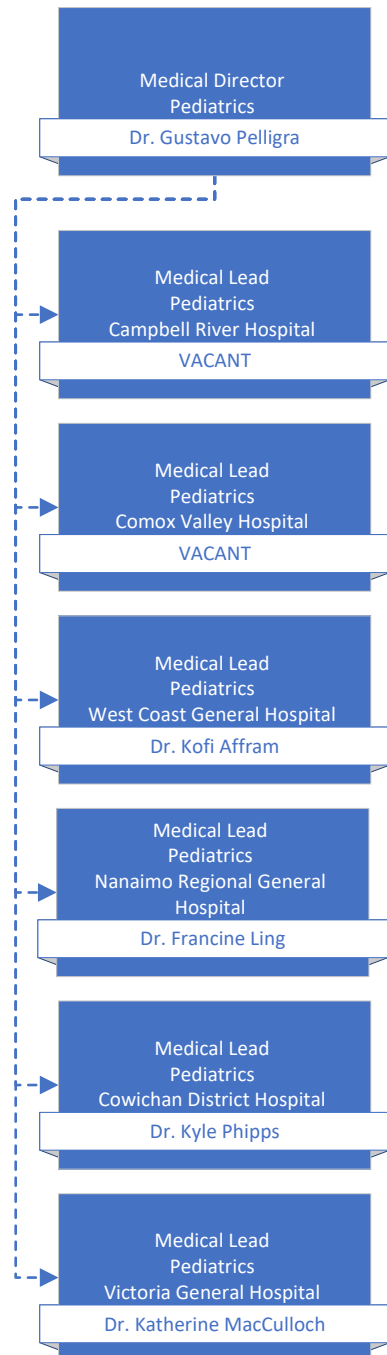
RJH & VGH



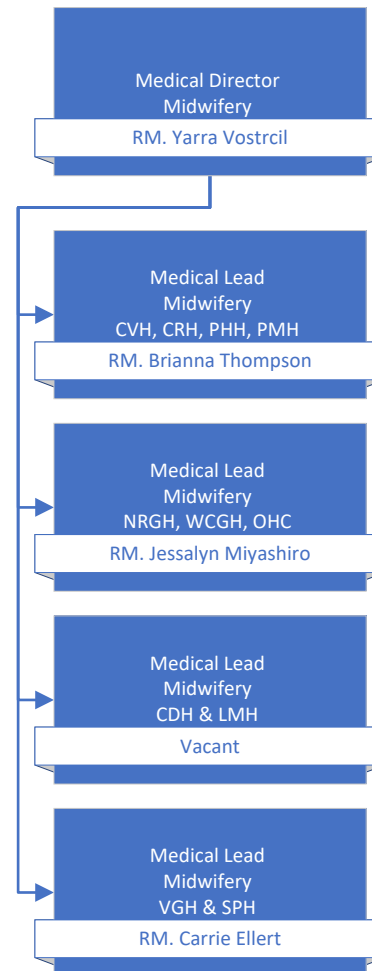
Victoria General Hospital (VGH)



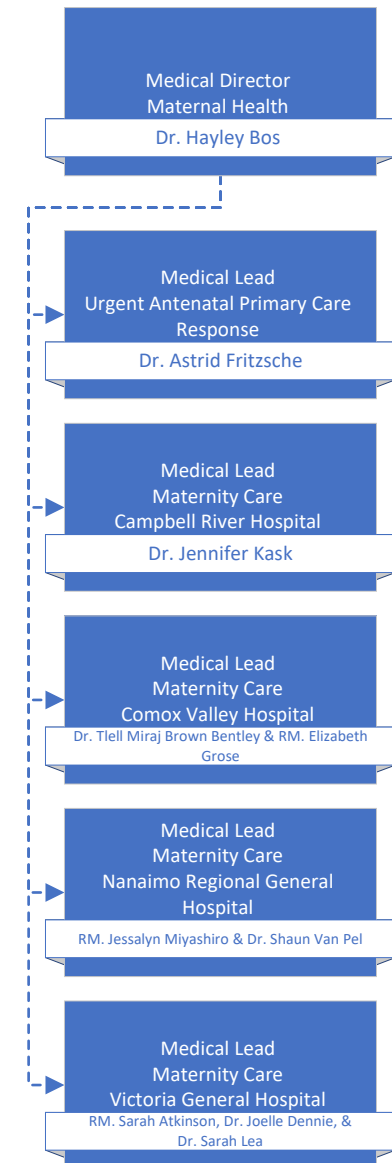
Pediatrics Regional Strategy



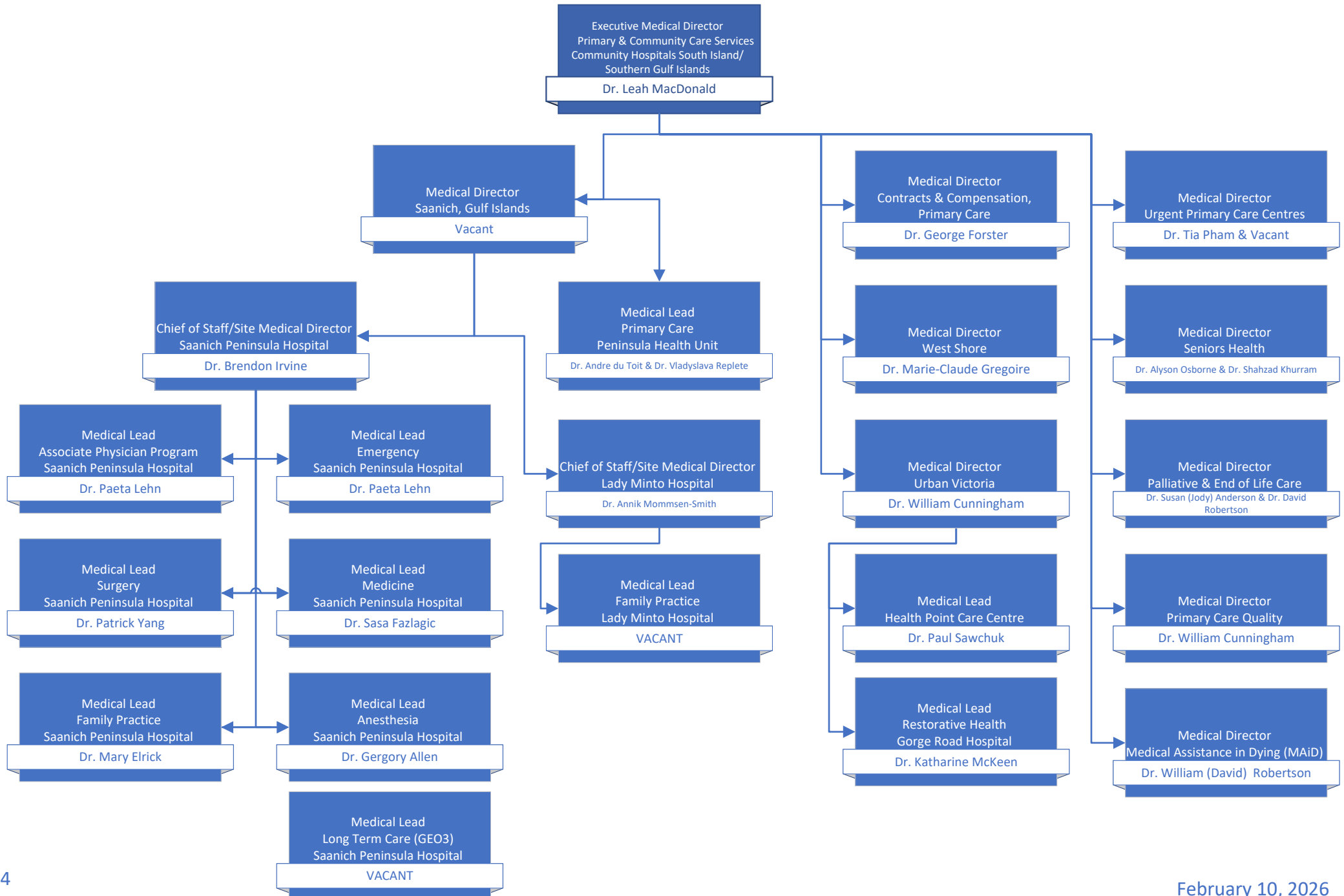
Midwifery Regional Strategy



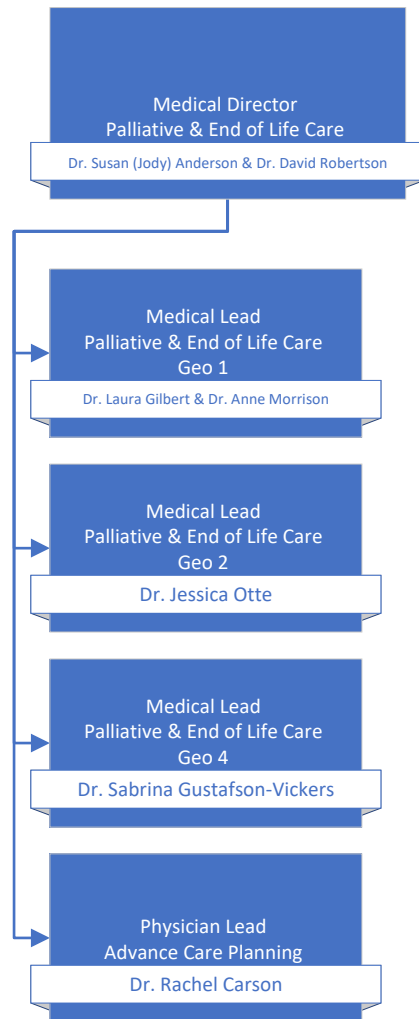
Maternal Health Regional Strategy



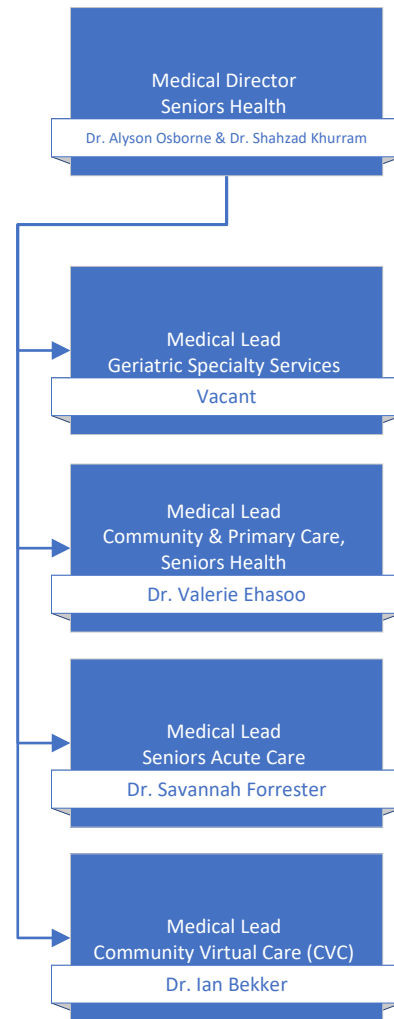
Saanich Peninsula & Gulf Islands/Seniors & Primary Care



Palliative & End of Life Care



Seniors Health



Urgent Primary Care Centres

