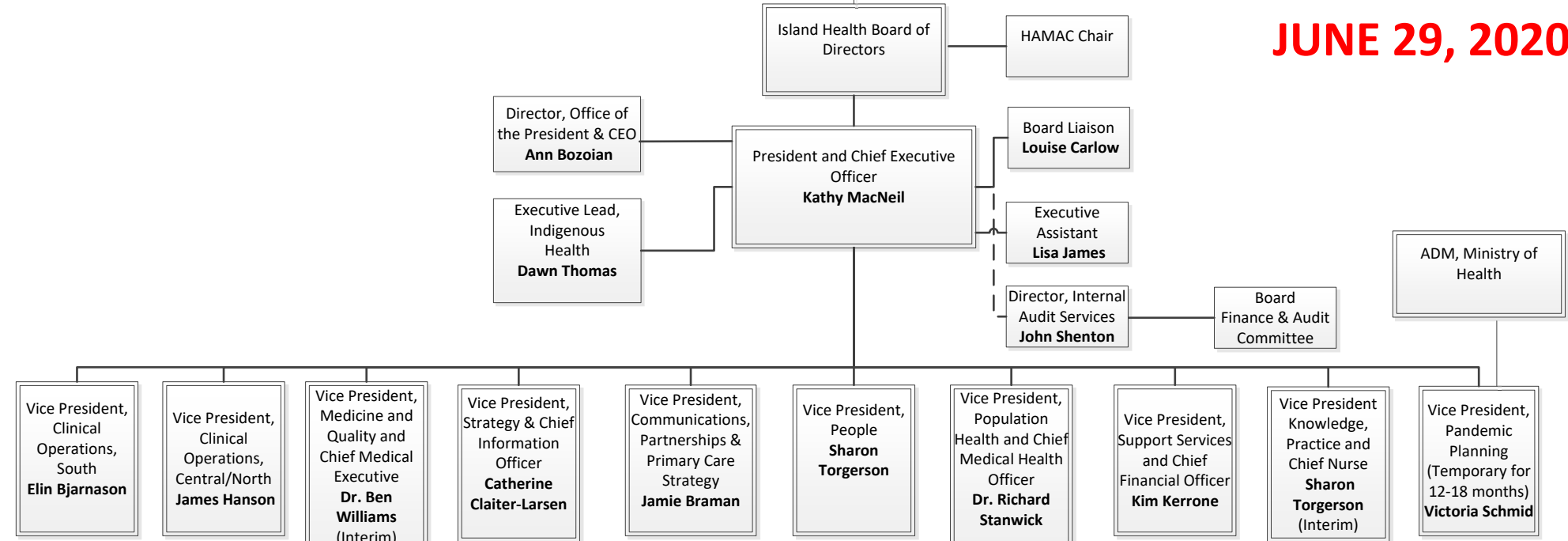


**Island Health
Executive Team**

**FUTURE STATE
JUNE 29, 2020**



- Clinical Services for South Island
- o Acute Care
- o Home Care/Support
- o Palliative Care/End of Life
- o Primary Care
- o Public Health
- o Seniors Care
- Island Wide Health Programs
- o Critical Care
- o Patient Flow & Transitions
- o Adult ICU
- o Brain Health
- o Heart Health
- o Renal
- o Adult Rehab
- o Restorative Wellness
- o Surgical Services
- o Trauma
- o Ambulatory & Medicine
- o Lab
- o Medical Imaging
- o Oncology
- o Emergency

- Clinical Services for Central/North Island
- o Acute Care
- o Home Care/Support
- o Palliative Care/End of Life
- o Primary Care
- o Public Health
- o Seniors Care
- Island Wide Health Programs
- o CYF- MHSU
- o CYF – Maternity/ Peds
- o Palliative/End of Life
- o MHSU – SI
- o MHSU – Centre/NI
- o Rural/Remote
- o Seniors Strategy
- o Residential Services
- o Home Care Strategy
- o Food Services
- o Housekeeping
- o Protection Services
- o Portering

- o Medical Affairs (Medical Staff Support/ Medical Staff Practice Design Support
- o Academic & Clinical Engagement
- o Quality, Safety & Improvement
- o Medical Governance (Credentialing, Privileging & Recruitment, Clinical Improvement & Medical Staff Development)
- o Executive Medical Directors

- o IM/IT
- o Decision Support (Including Health Records)
- o Planning
- o Med Safety
- o Pharmacy
- o IHealth
- o Clinical Informatics
- o Project Delivery
- o Health Information Management
- o Clinical Systems Engineering
- o Innovation Acceleration
- o Virtual Care

- o Primary Care Strategy
- o Communications & Patient & Public Engagement
- o Partner Engagement & Internal Communications
- o Digital Engagement & Innovation
- o Distributed Multi Media Systems
- o Print Services
- o Learning & Performance Support
- o Foundation, Auxiliary & Volunteer Engagement

- o HR Centre of Expertise (LR)
- o Talent Acquisition, Onboarding & Retention
- o Occupational Health & Safety
- o HR Client Services & Organizational Development
- o Enterprise Change Management
- o Scheduling
- o HR Access
- o Employee Records & Benefits

- o Medical Health Officers
- o Public Health
- o Population Health Planning & Surveillance
- o Environmental Public Health

- o Facilities Management
- o Logistics & Operations
- o P3s
- o PHSA Supply Chain
- o HEMBC
- o Budgets & Financial Analysis
- o Capital Management & Finance Projects
- o Value Optimization
- o Timekeeping & Payroll
- o Financial Operations
- o Risk Management & Legal
- o Business Systems
- o Info Stewardship, Access & Privacy

- o Professional Practice
- o Student Placement
- o NPs
- o Clinical Simulation Learning
- o Research/EMD

- o Experience