

# CRT Update

Monthly news from the Community Resource Team



Issue #016 | November 2023

**Welcome to the CRT Update** – a Community Health Services (CHS) newsletter written and distributed by the Community Resource Team (CRT).

If you have questions about any items in the CRT Update:

1. Ask your Coordinator or Leader for further clarification.
2. Ask your leadership to contact CRT: [chs.crt@islandhealth.ca](mailto:chs.crt@islandhealth.ca).

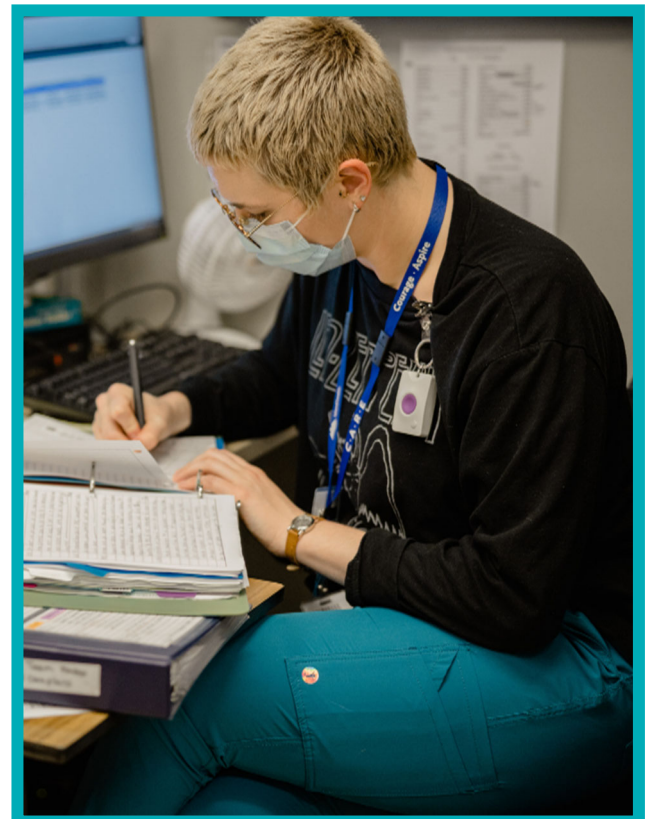
## Feature Article

### New Hospital Liaison Roles and Responsibilities Document

A new e-manual outlining the roles and responsibilities of CHS Hospital Liaison was recently developed and endorsed by the Liaison Optimization Council and is now posted to the Access and Transition SharePoint under Section A: [Acquiring Knowledge about Hospital Liaison CM Role](#).

The document describes the roles, duties, and responsibilities of the CHS Hospital Liaison, thereby informing and empowering staff, reducing redundancy in workload and confusion around the CHS Hospital Liaison role, and boosting operational efficiency.

Clinicians, please review this document and connect with your local leadership if you have any questions.



### [CHS OT & PT Role Enhancement Initiative Update](#)

The OT & PT Role Enhancement Initiative team has new updates about the Focus & Intention PDSA, students in CHS, and the CHS OT & PT community of practice.

[Learn More](#)

## [CRT Practice Support for Long-Term Care Access](#)

Practice support for LTC Access is transitioning over to CRT. If you are part of the Long-Term Care (LTC) Access team you can now send practice questions to the [CRT resource mailbox](#) (RMB) starting November 23.

[Learn More.](#)

---

## [Reducing Slips, Trips & Falls this Winter!](#)



As winter is upon us once again, let's stay safe and focus on preventing slips, trips, and falls. Health Wellness and Safety has put together some tips and tricks to reduce the chance of slipping and falling this season.

[Learn More.](#)

---

## **Product Update: Provincial Skin and Wound Formulary**

Some products are changing on the Provincial Skin and Wound Formulary this month. The changes are to products in skin fold management, calcium alginate with silver, and film barrier wipes.

Please see the [Skin and Wound Information Hub](#) for details.



Ministry of Health Alerts

Education Calendar

Update Archive

---

## [Online Course Opportunity!](#)

The Communicating with Clarity and Compassion online course is coming to CHS in January.

This course helps build effective, compassion-based communication and decision-making skills.

There are 24 available spots, and will be filled on a first-come-first-serve basis.

[Click here for more information.](#)

---

## **LPN Scope Optimization**

The 9<sup>th</sup> and final activity identified for scope optimization through the Health Human Resources Sustainability Initiative (HHRSI) has been published. [Negative Pressure Wound Therapy \(NPWT\) Level 1: Monitor & Manage](#) is required for all nurses working on a unit that provides NPWT. The education will be provided in 2 levels, with the second level expected by autumn 2024.

The LPN learning plan and leadership implementation guide have been added to the [CHS LPN Scope Optimization resource page](#).

**Note:** The NPWT curriculum can be taken concurrently with the non-visible wound bed curriculum.

## Update and Reminder for All Staff: Quick Access PSLS Reporting



Following requests to make the Patient Safety and Learning System (PSLS) submission page more accessible to CHS staff, CRT has added a PSLS “Report Incidents & Safety Events” button to the [CHS Home](#) and [Staff Safety](#) pages.

The Patient Safety and Learning System is a web-based tool that BC's health authorities use to report and learn from patient safety incidents, good catches (near misses), and workplace hazards. A provincial PSLS team reviews incident data and makes recommendations for quality improvement on program, CARE Network, and organizational levels.

To improve care, workplace and patient safety, all Island Health staff are encouraged to use the reporting portal to submit safety events that they have been a part of, or have witnessed. Don't delay, report today!

### Say Hi to the RAI!

Monthly Tips for the RAI-HC

**Did You Know:** Outcome Scales from the RAI-HC (soon-to-be interRAI-HC) support CHS clinicians in identifying risks for clients and their care. They are calculated automatically once all required data has been completed in the assessment.

The interRAI PURS (Pressure Ulcer Risk Scale), which is also calculated in the RAI-HC, uses seven assessment items to differentiate risk for a client to develop pressure ulcers. Higher PURS scores indicate a higher relative risk for developing a pressure ulcer.

Job Aid: [Describing Outcome Scales \(RAI-MDS 2.0\)](#)



### “What is *humility*, and why is it critical to cultural safety?”

This month's featured question from the Harm Reduction Team's Caring Conversation Cards is for you to reflect upon privately or with your colleagues. These questions were developed to encourage safe and meaningful conversations.

[Click here](#) to learn more about harm reduction principles.