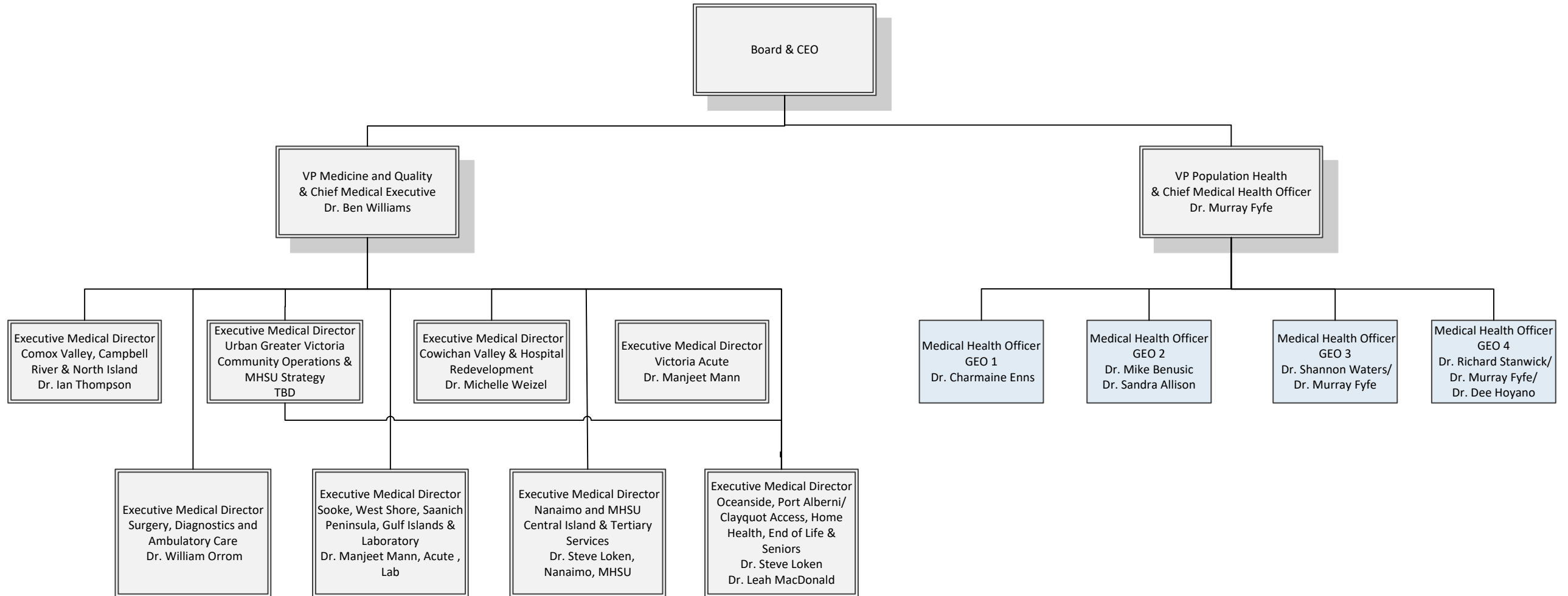
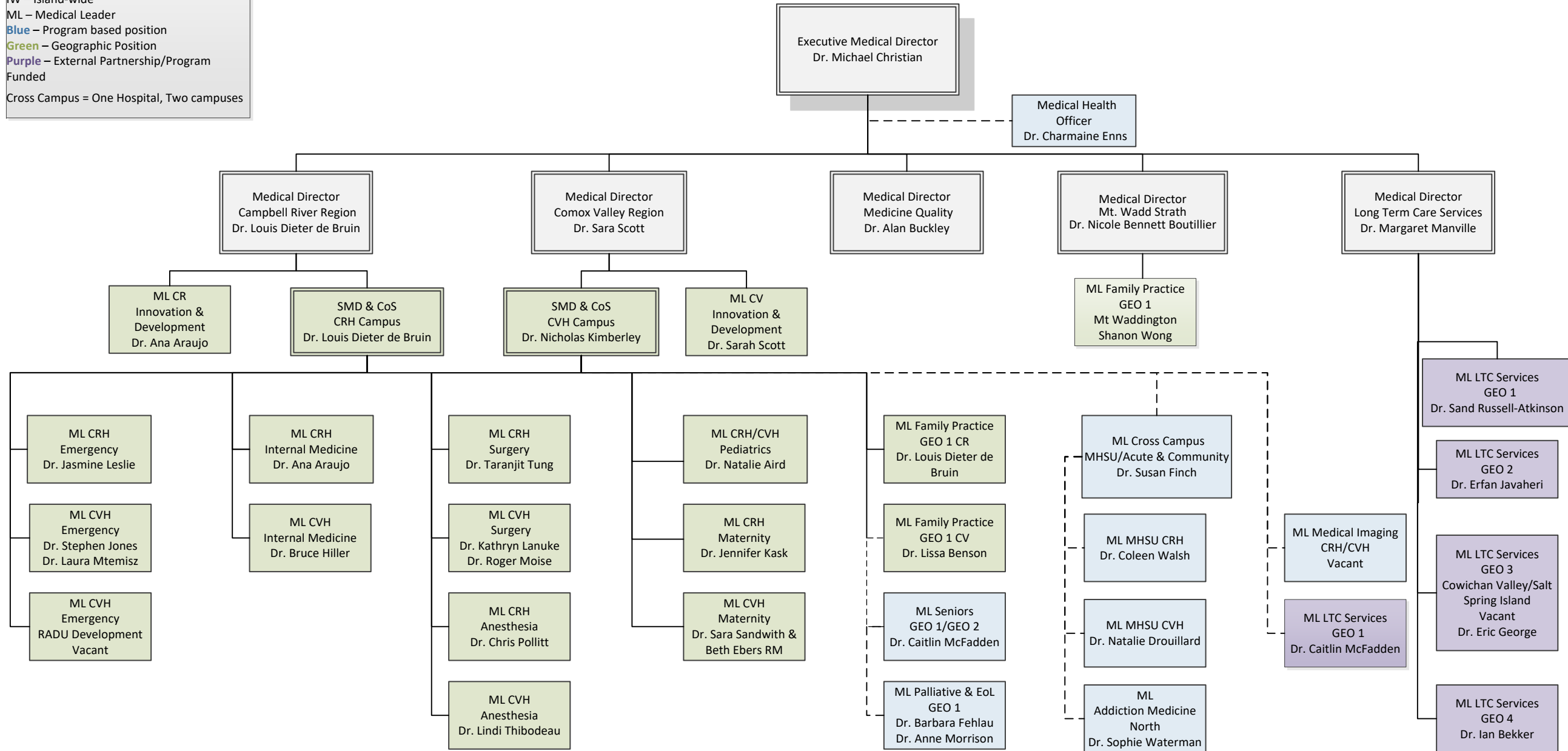


Operational Medical Leadership



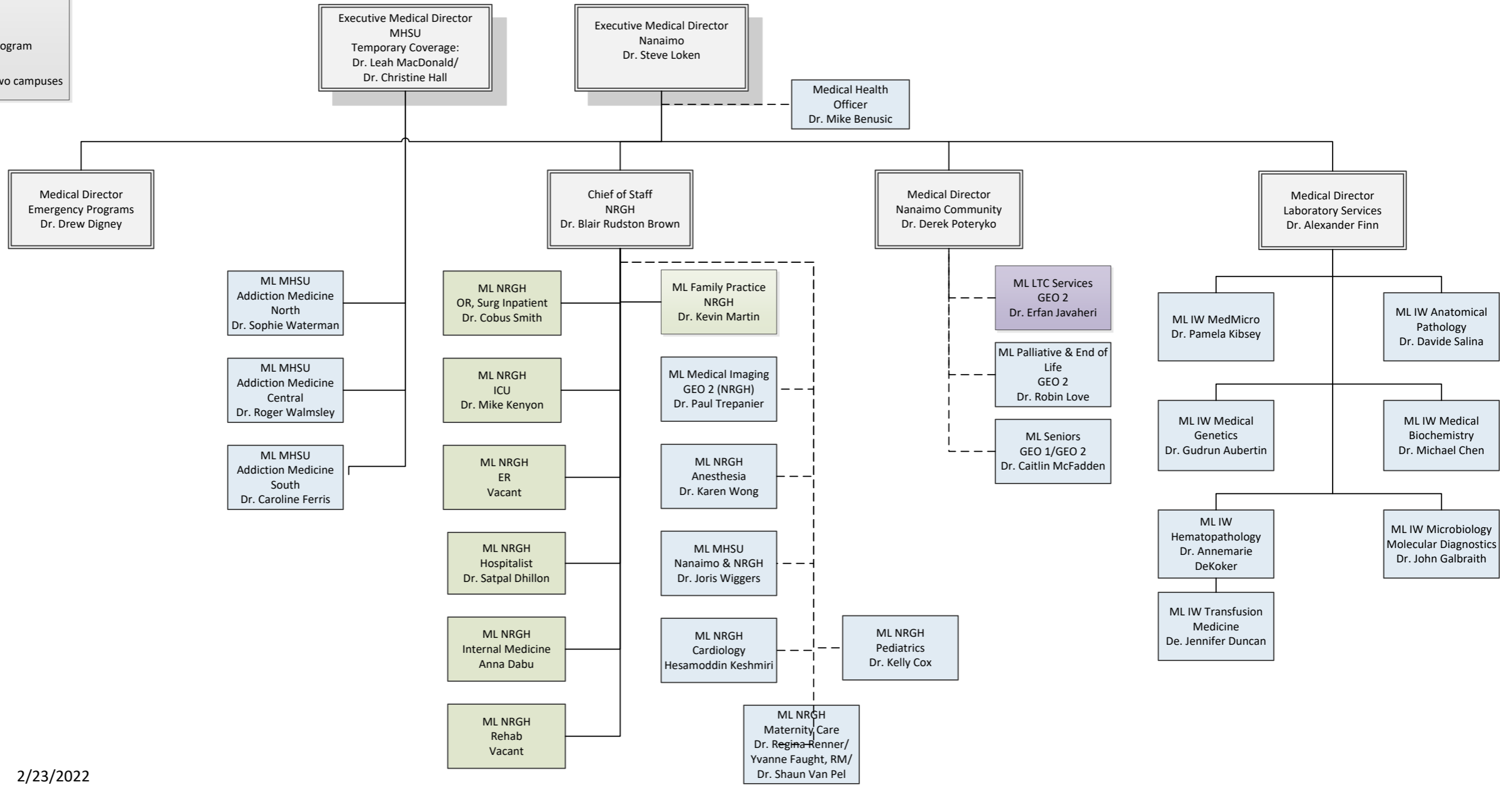
Comox Valley, Campbell River & North Island, Long Term Care & Assisted Living – Medical Leadership

Key
 SMD & CoS – Site Medical Director & Chief of Staff
 IW – Island-wide
 ML – Medical Leader
 Blue – Program based position
 Green – Geographic Position
 Purple – External Partnership/Program
 Funded
 Cross Campus = One Hospital, Two campuses



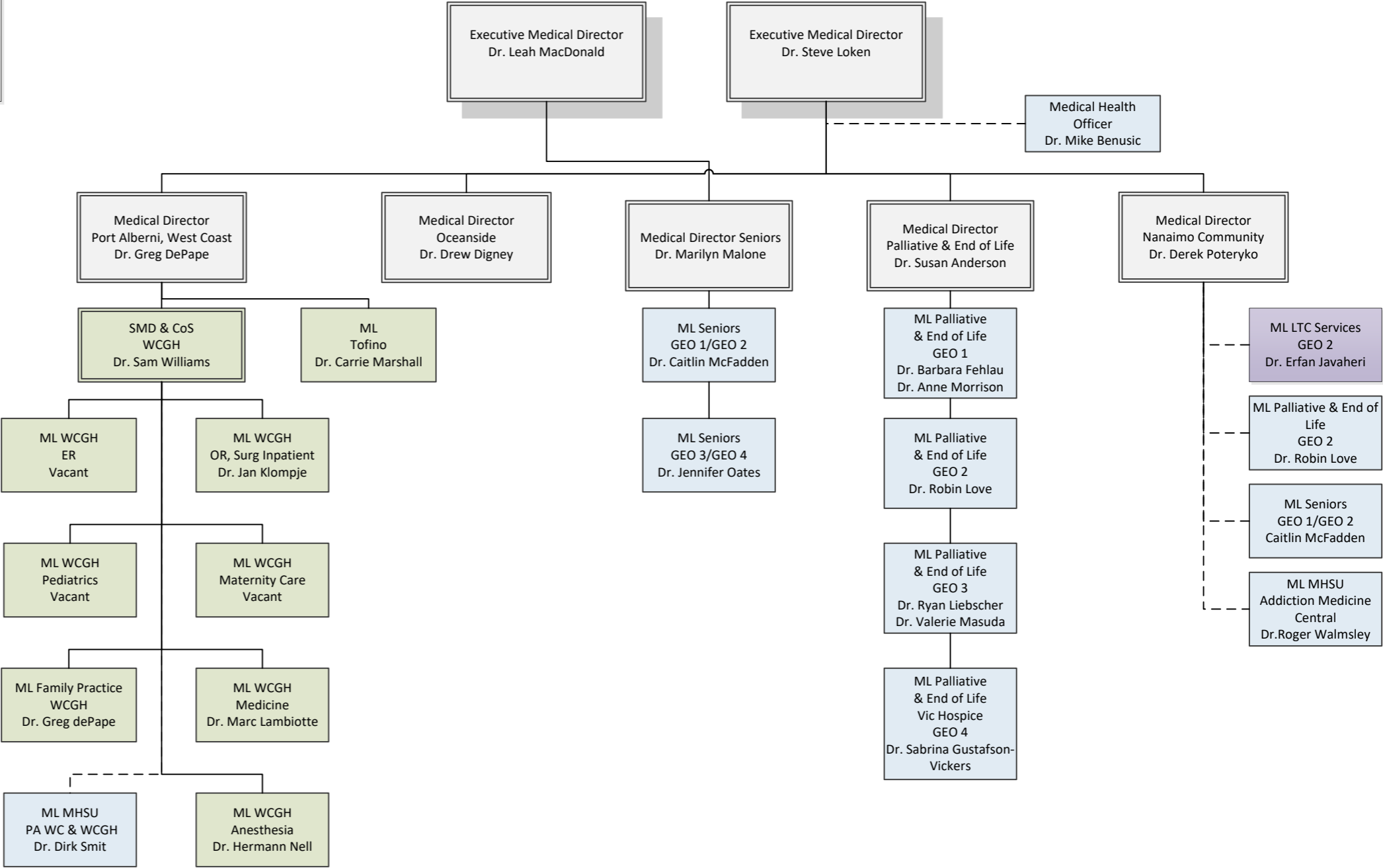
Nanaimo and MHSU Central Island, Tertiary Services and Laboratory – Medical Leadership

Key
 SMD & CoS – Site Medical Director & Chief of Staff
 IW – Island-wide
 ML – Medical Leader
 Blue – Program based position
 Green – Geographic Position
 Purple – External Partnership/Program Funded
 Cross Campus = One Hospital, Two campuses



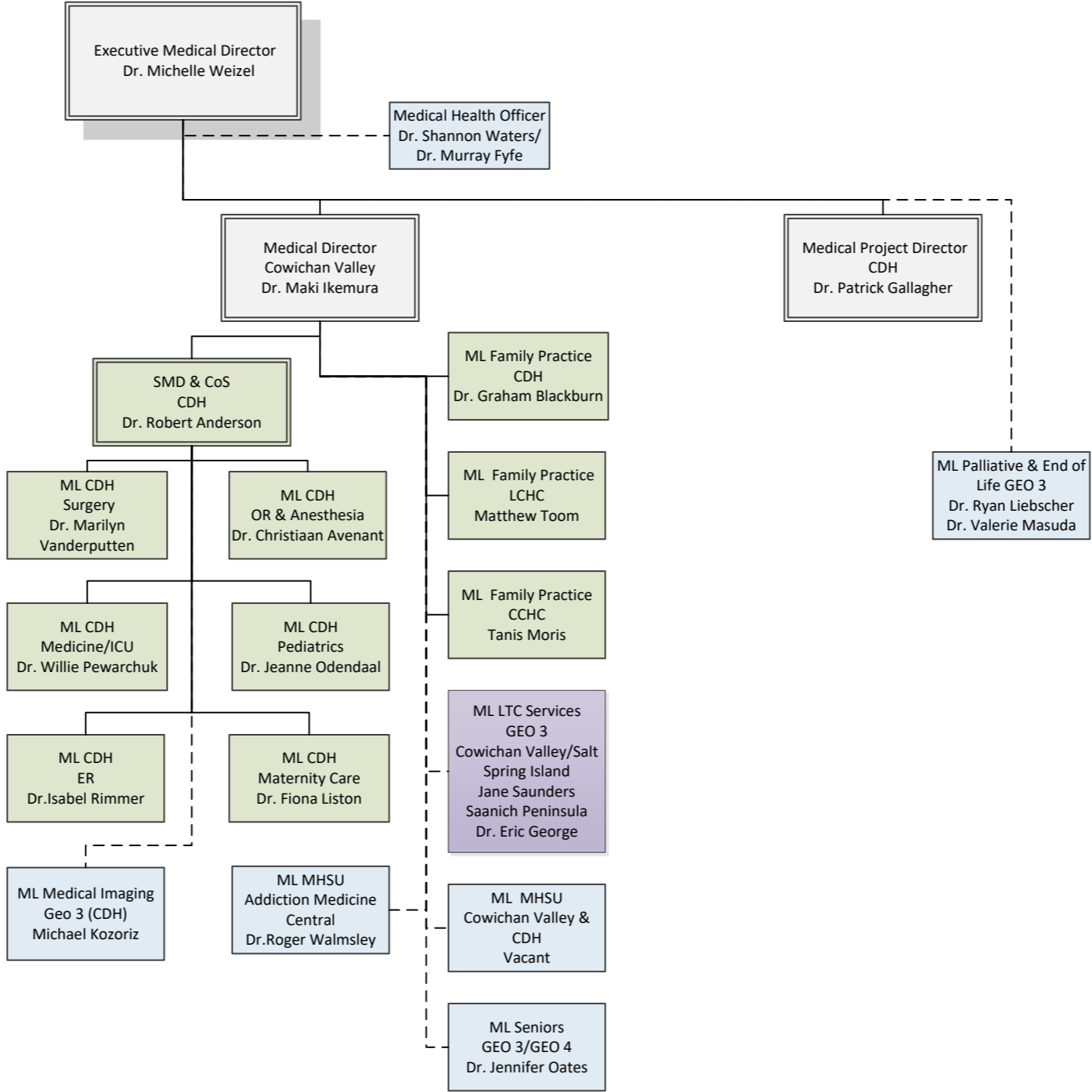
Key
 SMD & CoS – Site Medical Director & Chief of Staff
 IW – Island-wide
 ML – Medical Leader
 Blue – Program based position
 Green – Geographic Position
 Purple – External Partnership/Program Funded
 Cross Campus = One Hospital, Two campuses

Oceanside, Port Alberni/Clayquot Access, Home Health, End of Life & Seniors – Medical Leadership



Cowichan Valley & Hospital Redevelopment – Medical Leadership

Key
 SMD & CoS – Site Medical Director & Chief of Staff
 IW – Island-wide
 ML – Medical Leader
 Blue – Program based position
 Green – Geographic Position
 Purple – External Partnership/Program Funded
 Cross Campus = One Hospital, Two campuses

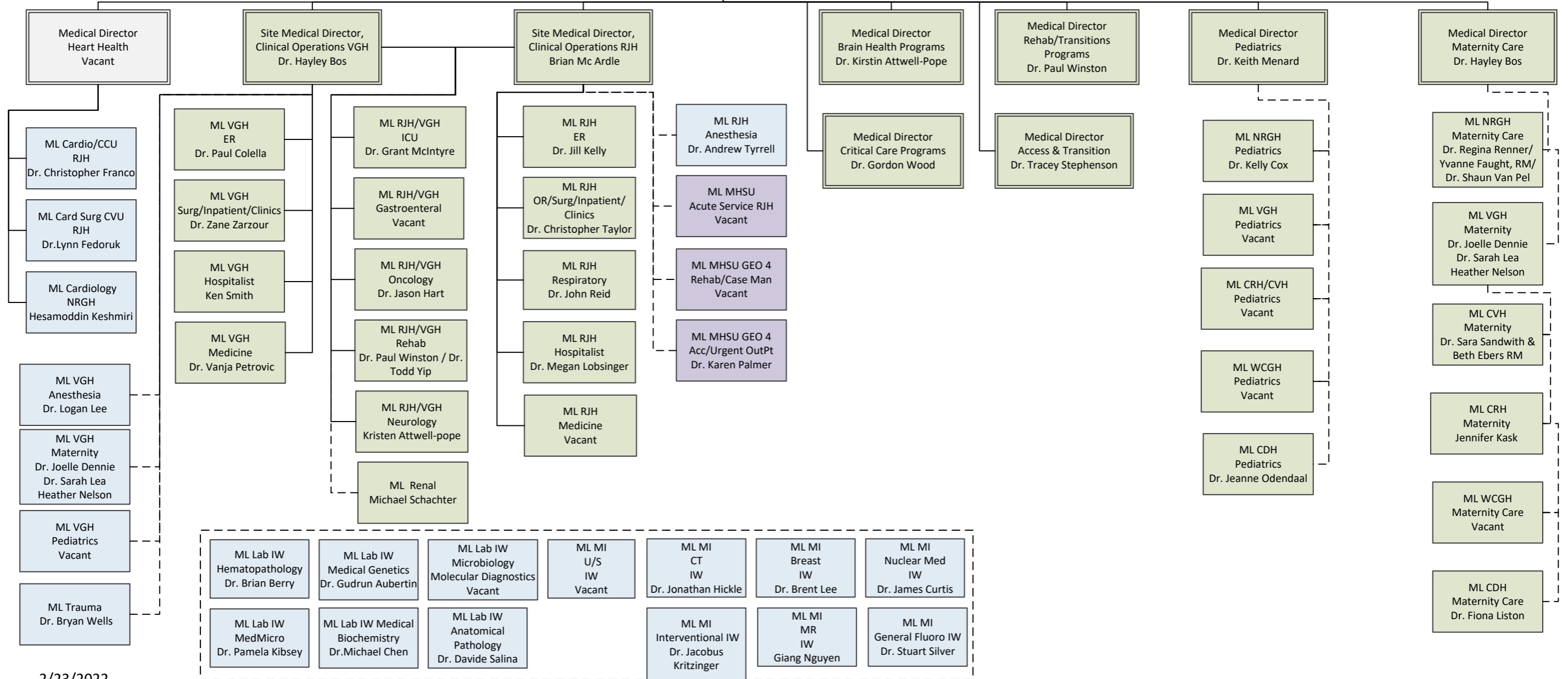


Victoria Acute – Medical Leadership

Key
 SMD & CoS – Site Medical Director & Chief of Staff
 IW – Island-wide
 ML – Medical Leader
 Blue – Program based position
 Green – Geographic Position
 Purple – External Partnership/Program Funded
 Cross Campus = One Hospital, Two campuses

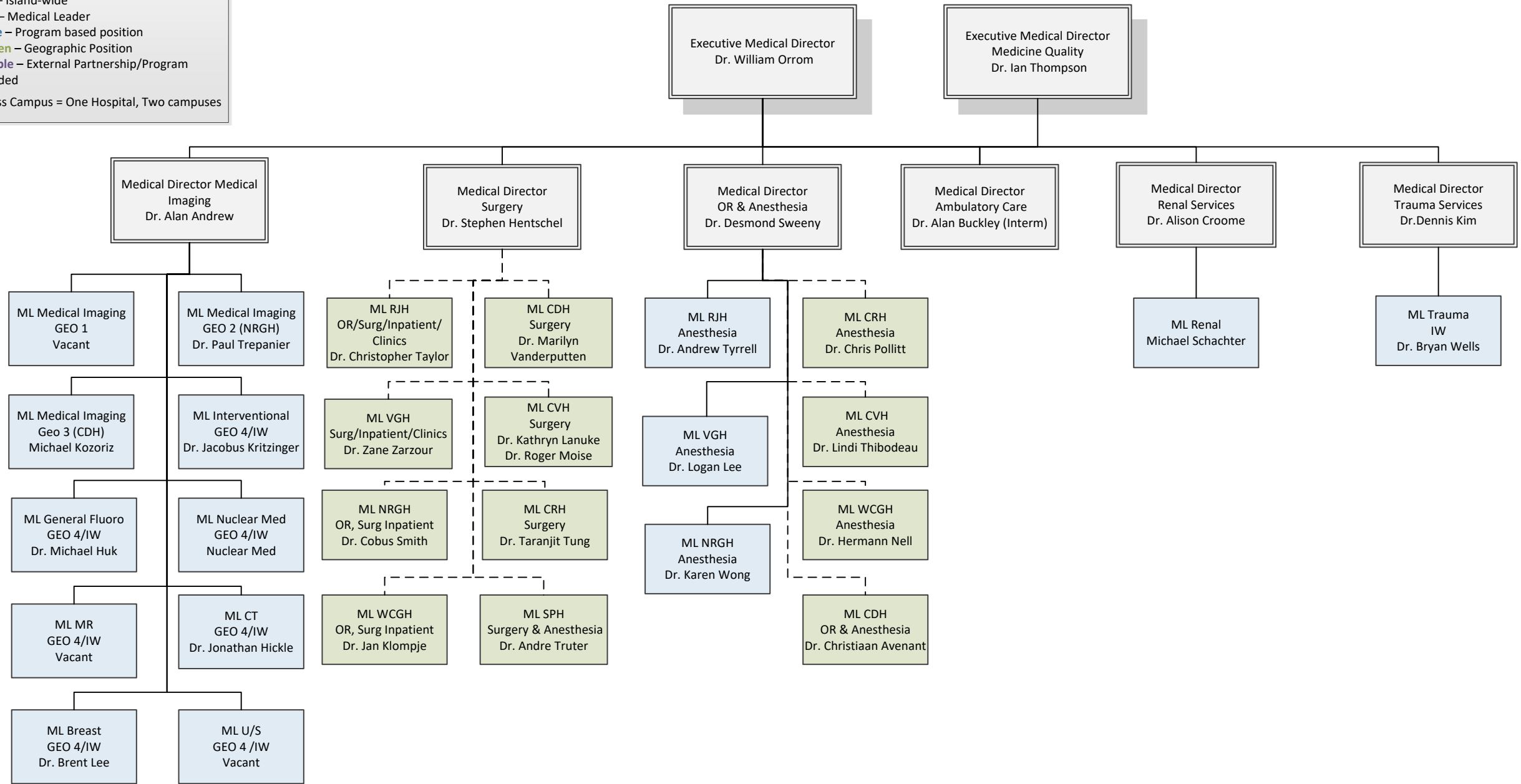
Executive Medical Director
 Dr. Manjeet Mann

Medical Health Officer
 Dr. Richard Stanwick/
 Dr. Murray Fyfe/Dr.
 Dee Hoyano



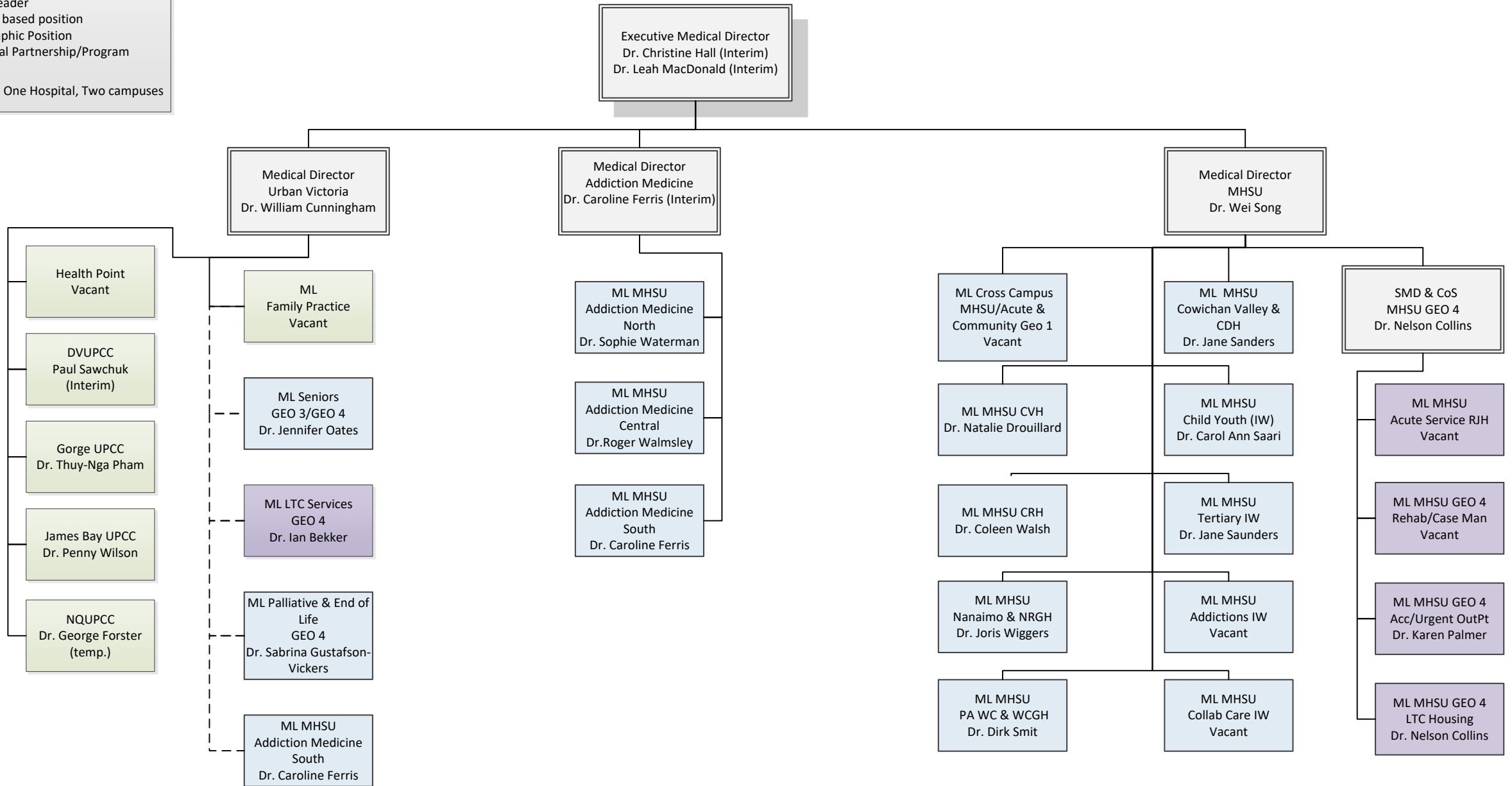
Key
 SMD & CoS – Site Medical Director & Chief of Staff
 IW – Island-wide
 ML – Medical Leader
 Blue – Program based position
 Green – Geographic Position
 Purple – External Partnership/Program
 Funded
 Cross Campus = One Hospital, Two campuses

Surgery, Diagnostics and Ambulatory Care - Medical Leadership



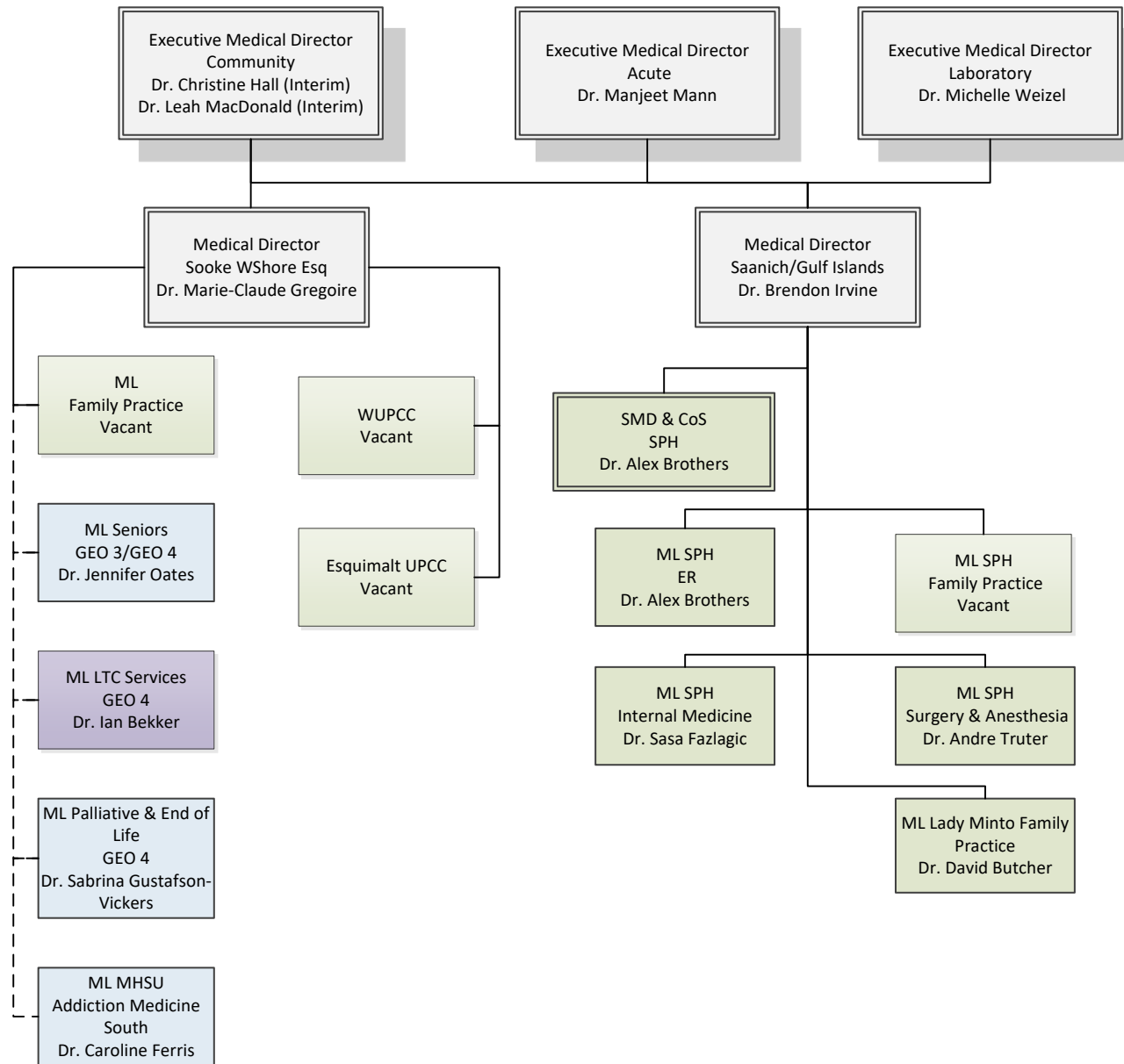
Urban Greater Victoria Community Operations & MHSU Strategy – Medical Leadership

Key
 SMD & CoS – Site Medical Director & Chief of Staff
 IW – Island-wide
 ML – Medical Leader
 Blue – Program based position
 Green – Geographic Position
 Purple – External Partnership/Program
 Funded
 Cross Campus = One Hospital, Two campuses



Sooke, West Shore, Saanich Peninsula, Gulf Islands & Laboratory – Medical Leadership

Key
 SMD & CoS – Site Medical Director & Chief of Staff
 IW – Island-wide
 ML – Medical Leader
 Blue – Program based position
 Green – Geographic Position
 Purple – External Partnership/Program Funded
 Cross Campus = One Hospital, Two campuses



Key
 SMD & CoS – Site Medical Director & Chief of Staff
 IW – Island-wide
 ML – Medical Leader
 Blue – Program based position
 Green – Geographic Position
 Purple – External Partnership/Program
 Funded
 Cross Campus = One Hospital, Two campuses

Portfolio P – Medical Leadership

