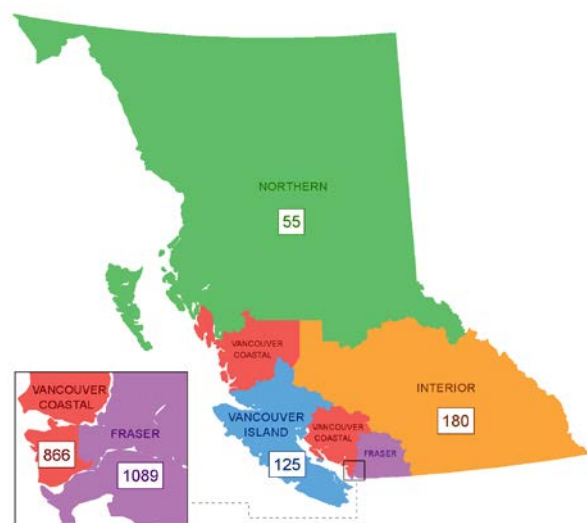


British Columbia COVID-19 Daily Situation Report, May 8, 2020*

Figure 1: Map of COVID-19 confirmed cases reported by health authority, BC, January 1 - May 8, 2020 (N=2,315)



Key findings

- The proportion of cases released from isolation and considered no longer infectious continues to increase (Table 1).
- Most indicators show a decline.
- The number of cases by onset date has been declining since mid-March (Fig 2).
- The number of hospital admissions has been declining since late March (Fig 4).
- The proportion of travel-related cases and cases without a known source of infection has decreased since March (Fig 5).
- The proportion of positive tests is declining (Fig 6).

Table 1: Epidemiological profile of reported cases by health authority, BC, January 1 - May 8, 2020 (N=2,315)

	Fraser	Interior	Vancouver Island	Northern	Vancouver Coastal	Total N (%) ^a
Total number of cases	1,089^b	180	125^c	55	866	2,315
New cases since yesterday	25	1	1	1	1	29^d
Median age in years, cases ^e	51	48	52	47	56	52 years (range 0-103y)
Female sex, cases	539	88	68	32	479	1,206/2,309 (52%)
Cumulative incidence per 100,000 population^f	57	22	15	18	70	45
Ever hospitalized^g	233	29	25	12	168	467 (20%)
Median age in years, ever hospitalized ^e	69	62	72	48	69	69 years (range 0-98y)
Currently hospitalized ^g	39	2	2	3	27	73
Currently in critical care^h	11	0	1	1	7	20
Total number of deaths^g	42	2	5	0	78	127 (5%)
New deaths since yesterday	1	0	0	0	0	1
Median age in years, deaths ^e	82	73	85	NA	87	85 years (range 47-101y)
Discontinued isolationⁱ	672	165	110	49	583	1,579 (68%)

^a Denominator for % derivation is total number of cases (N), except sex for which denominator is as specified for those with known information on sex.

^b Fifteen of the new cases reported by FHA on May 8 reflect a data correction. These cases occurred between March 4 and May 1.

^c Due to a data correction, two cases reported yesterday were removed and one new case was added today.

^d This represents cases newly reported today; due to the data correction in VIHA it does not equal the difference between yesterday's total case count and today's.

^e Median age is calculated based on those with known information for all, hospitalized, and deceased cases (n=2309, 467, and 126, respectively).

^f PEOPLE2019- 2020 population estimates

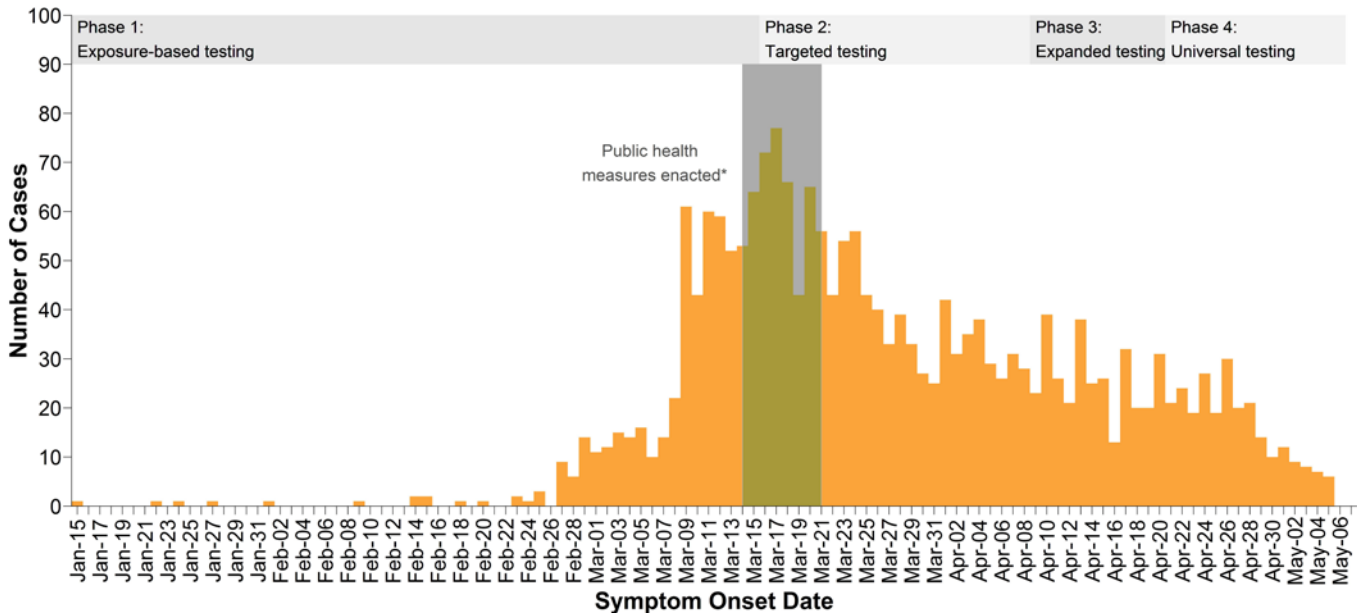
^g Serious outcomes (i.e., hospitalization, death) may be incomplete or out of date (i.e., under-estimates) owing to the timing and process for case status update.

^h Source: PHS May 8 @10am. The number of COVID cases in critical care units is reported daily by each Health Authority and includes the number of COVID patients in all critical care beds (e.g., intensive care units; high acuity units; and other surge critical care spaces as they become available and/or required). Work is ongoing to improve the completeness and accuracy of the data reported.

ⁱ Self-isolation has been discontinued per the criteria outlined in [BC guidelines for public health management of COVID-19](#)

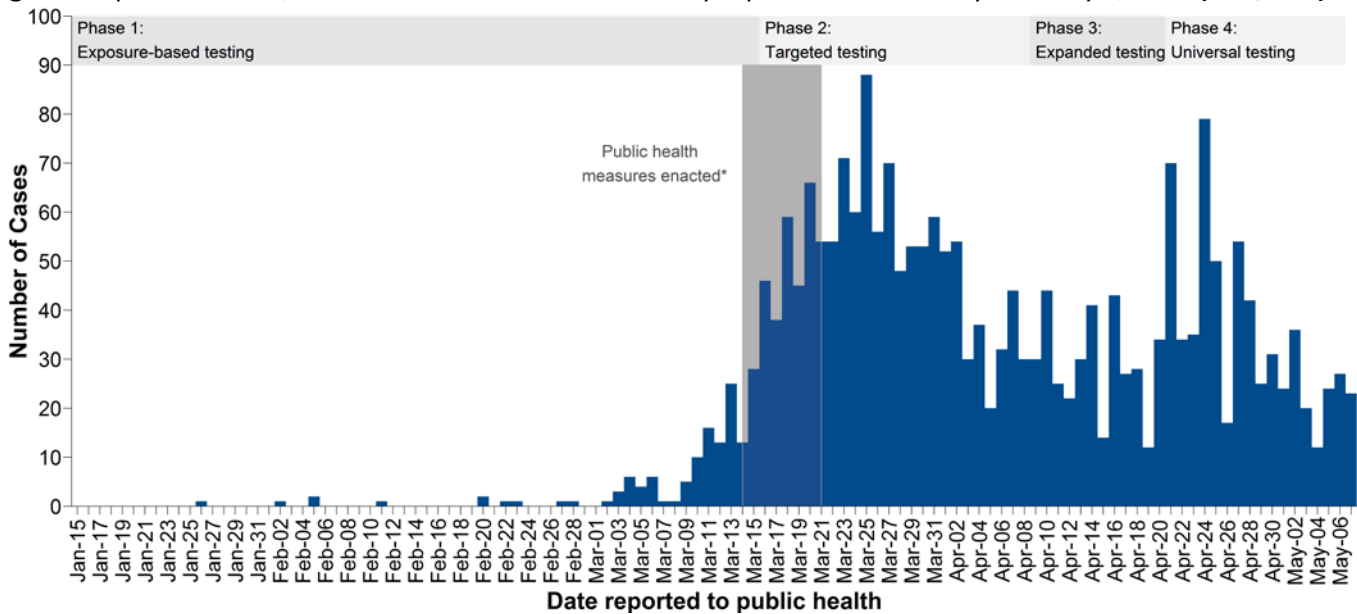
*All findings are based on laboratory-confirmed cases reported from Health Authorities to BCCDC as of 10:00 AM PT, except where otherwise noted. Data represent a subset of actual cases and are subject to change with changes in testing recommendations and practices, reconciliation and/or as data become more complete.

Figure 2: Epidemic curve, confirmed COVID-19 cases in BC by symptom onset date January 15 - May 7, 2020 (N=2,146[†])



[†] Only cases with symptom onset dates reported are included; cases with symptom onset date on the same day as this report are excluded as only a portion are available at the time the data are extracted.

Figure 3: Epidemic curve, confirmed COVID-19 cases in BC by reported date January 15 - May 7, 2020 (N=2,315[‡])

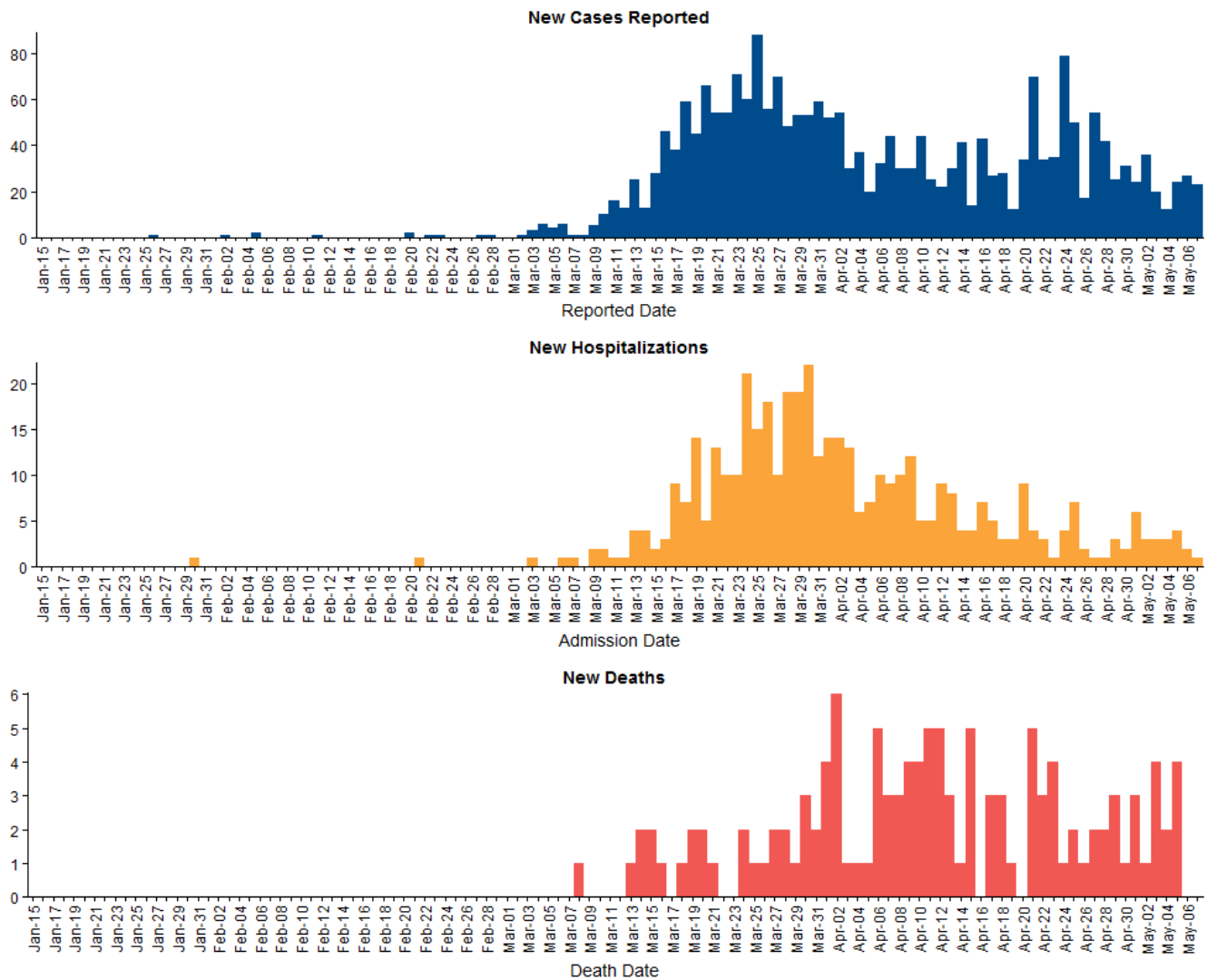


[‡] Cases reported on the same day as this report are excluded as only a portion are available at the time the data are extracted. The number of cases reported by day differs from that in Table 1 in previous reports as this figure reflects the date the case was lab-confirmed and reported to the Health Authority.

A number of public health measures were enacted during the week shaded in grey. These include: March 14: Spring break started for most schools; March 16: Mass gatherings public health order implemented (>50 people), entry of foreign nationals banned, symptomatic individuals banned from flights to Canada, international flights restricted to four national airports; March 17: BC public health emergency declared, traveller self-isolation public health order implemented; March 18: Provincial state of emergency declared, food and drink service restrictions public health order implemented; March 20: US/Canada border closed to non-essential travel; March 21: closure of personal service establishments. Please refer to footnote in Figure 6 for laboratory testing criteria changes.

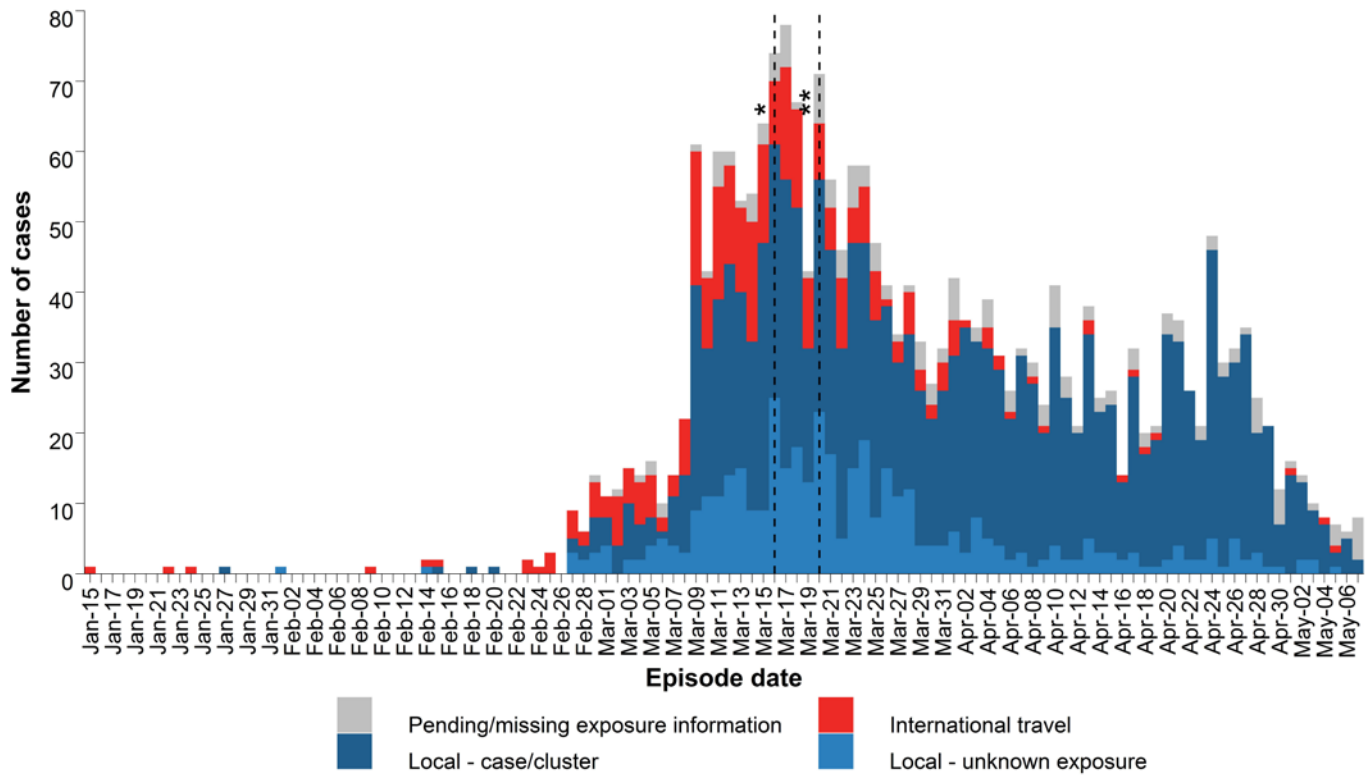
How to interpret the epidemic curves: Figure 2 shows the date that a case's illness started. Figure 3 shows the date the illness was confirmed and reported by the laboratory. There is a delay between the beginning of a person's illness (symptom onset date) and the date the laboratory confirms and reports the illness (reported date). New cases only have a reported date available and appear on the right of the curve in Figure 3, but their symptom onset would have occurred prior. As information on symptom onset becomes available through public health investigation, cases are expected to appear on earlier dates in Figure 2.

Figure 4. Number of new COVID-19 cases, hospital admissions and deaths by event date, BC, January 15 - May 7, 2020 (N=2315*)



*Missing or invalid event dates excluded (n=2315 cases, 435 hospitalizations, and 123 deaths)

Figure 5: Likely source of infection for COVID-19 cases in BC by episode date[§], January 15 - May 7, 2020 (N=2,315)



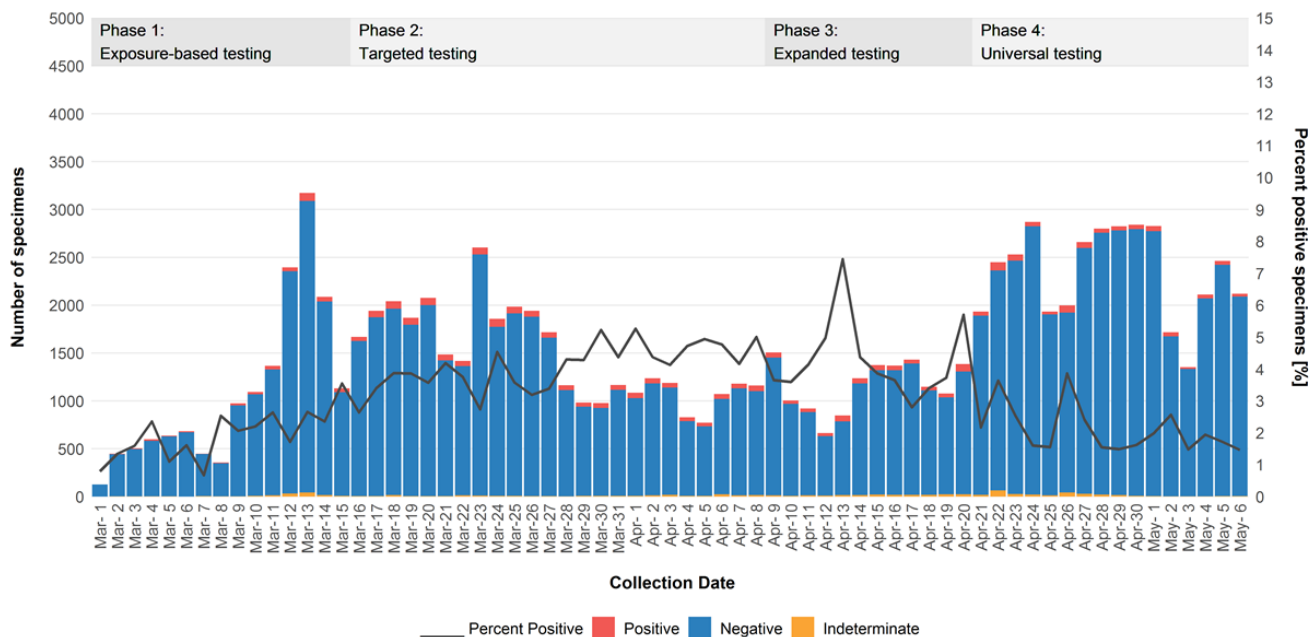
§ Episode date is based on symptom onset date (n=2,146), if not available then date COVID-19 was reported to health authority (n=169).

* March 16: Entry of foreign nationals banned; symptomatic individuals banned from flights to Canada; international flights restricted to four national airports.

** March 20: US/Canada border closed to non-essential travel.

----- Report continues on next page -----

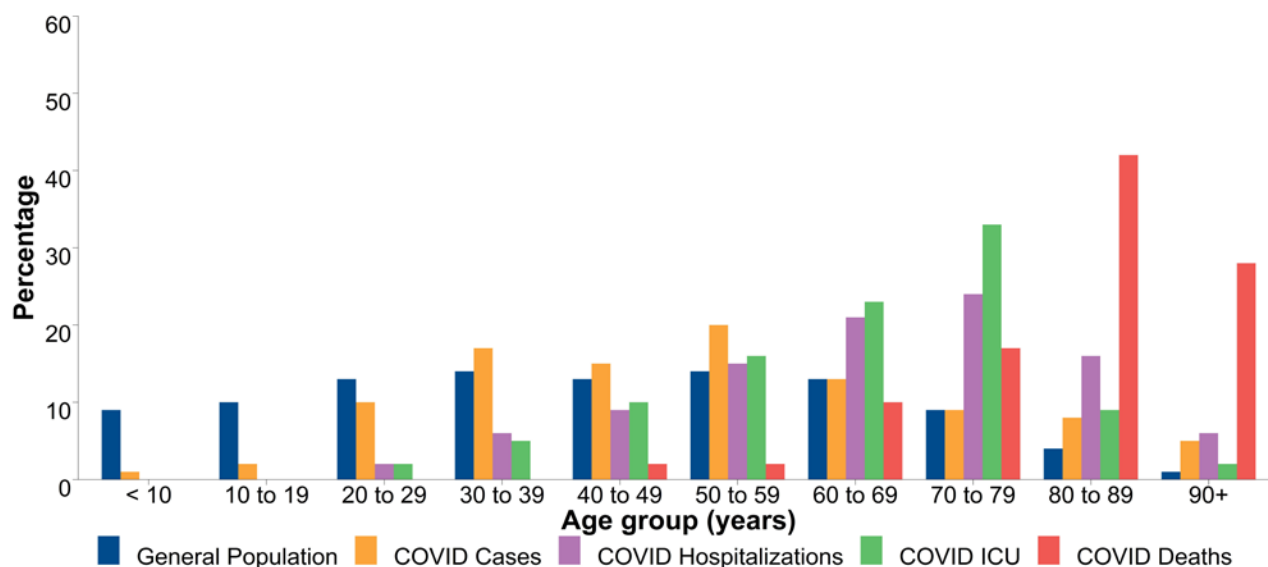
Figure 6: Number and proportion of SARS-CoV-2 positive respiratory specimens, BC, March 1 – May 6, 2020 (N=102,749; Positive=3.0%)



Data source: PLOVER extract on May 8, 2020. Methods and caveats: SARS-CoV-2 specimens are tallied at the specimen level by date the specimen was collected. The proportion positive on a given date may include new positive cases and retested positive cases; this may over-estimate proportionate positivity. Similarly, individuals may be tested repeatedly after becoming negative; this may under-estimate proportionate positivity. **As of March 16, testing guidelines included hospitalized patients, healthcare workers, long term care facility staff and residents, and those part of a cluster or outbreak who experienced respiratory symptoms. ***As of April 9, testing guidelines were expanded to include individuals with fever (>38°C) and cough or shortness of breath, including (a) residents of remote, isolated or Indigenous communities, (b) people living and working in congregate settings such as work-camps, correctional facilities, shelters, group homes, assisted living and seniors’ residences, (c) people who are homeless or have unstable housing, (d) essential service providers (e.g. first responders), or (e) returning travellers identified at a point of entry to Canada. In addition, health care providers can order a COVID-19 test for any patient based on their clinical judgment. ****As of Apr 21, the testing guidelines were further expanded to include all individuals with new respiratory or systemic symptoms compatible with COVID-19, however mild. Symptoms may include fever, chills, cough, shortness of breath, sore throat, odynophagia, rhinorrhea, nasal congestion, loss of sense of smell, headache, muscle aches, fatigue, or loss of appetite.

----- Report continues on next page -----

Figure 7: Percentage distribution of COVID-19 cases, hospitalization, ICU admissions and deaths by age, compared to the general population† of BC, January 1 – May 8, 2020 (N=2,309*)



*Includes 2,309 cases, 467 hospitalizations, 171 ICU admissions, and 126 deceased with age information available.

† PEOPLE2019-2020 population estimates

Note: COVID hospitalizations have been reported in the <10y and 10-19y age groups but represent <1% of hospitalizations and are therefore not visible.

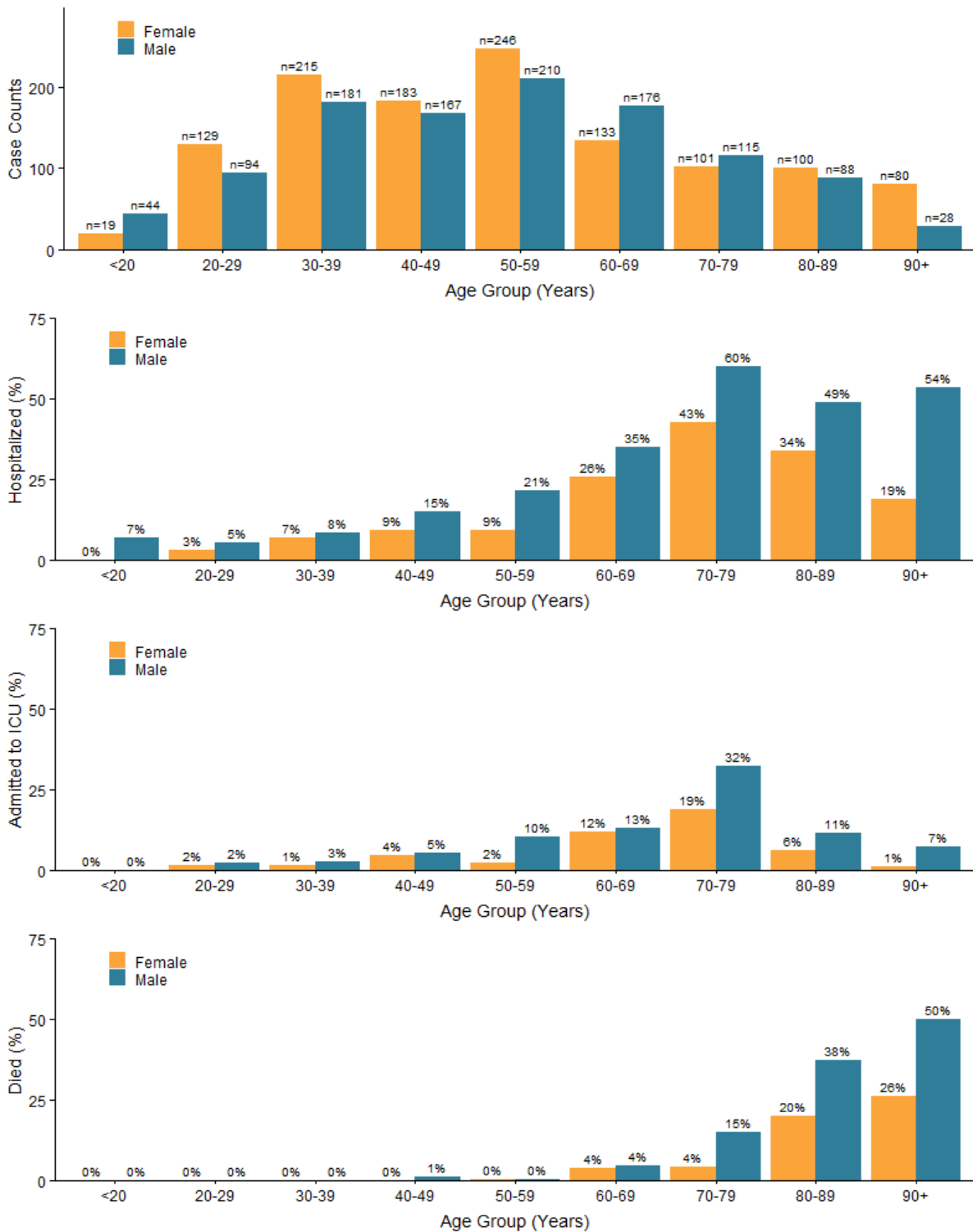
Table 2: Number and percentage distribution of COVID-19 cases, hospitalization, ICU admissions and deaths by age, compared to the general population of BC, January 1 – May 8, 2020 (N=2,309*)

Age groups	COVID cases n (%)	Cases ever hospitalized n (%)	Cases ever in ICU n (%)	COVID deaths n (%)	General population† n (%)
<10 Years	22 (1)	2 (<1)	0 (0)	0 (0)	468,280 (9)
10-19 Years	41 (2)	1 (<1)	0 (0)	0 (0)	507,197 (10)
20-29 Years	223 (10)	9 (2)	4 (2)	0 (0)	684,681 (13)
30-39 Years	396 (17)	30 (6)	8 (5)	0 (0)	730,523 (14)
40-49 Years	350 (15)	42 (9)	17 (10)	2 (2)	647,790 (13)
50-59 Years	456 (20)	68 (15)	28 (16)	2 (2)	721,355 (14)
60-69 Years	309 (13)	96 (21)	39 (23)	13 (10)	675,632 (13)
70-79 Years	216 (9)	112 (24)	56 (33)	21 (17)	436,179 (9)
80-89 Years	188 (8)	77 (16)	16 (9)	53 (42)	188,010 (4)
90+ Years	108 (5)	30 (6)	3 (2)	35 (28)	50,876 (1)
Total	2,309	467	171	126	5,110,523

*Only cases with age information available are included.

† PEOPLE2019-2020 population estimates

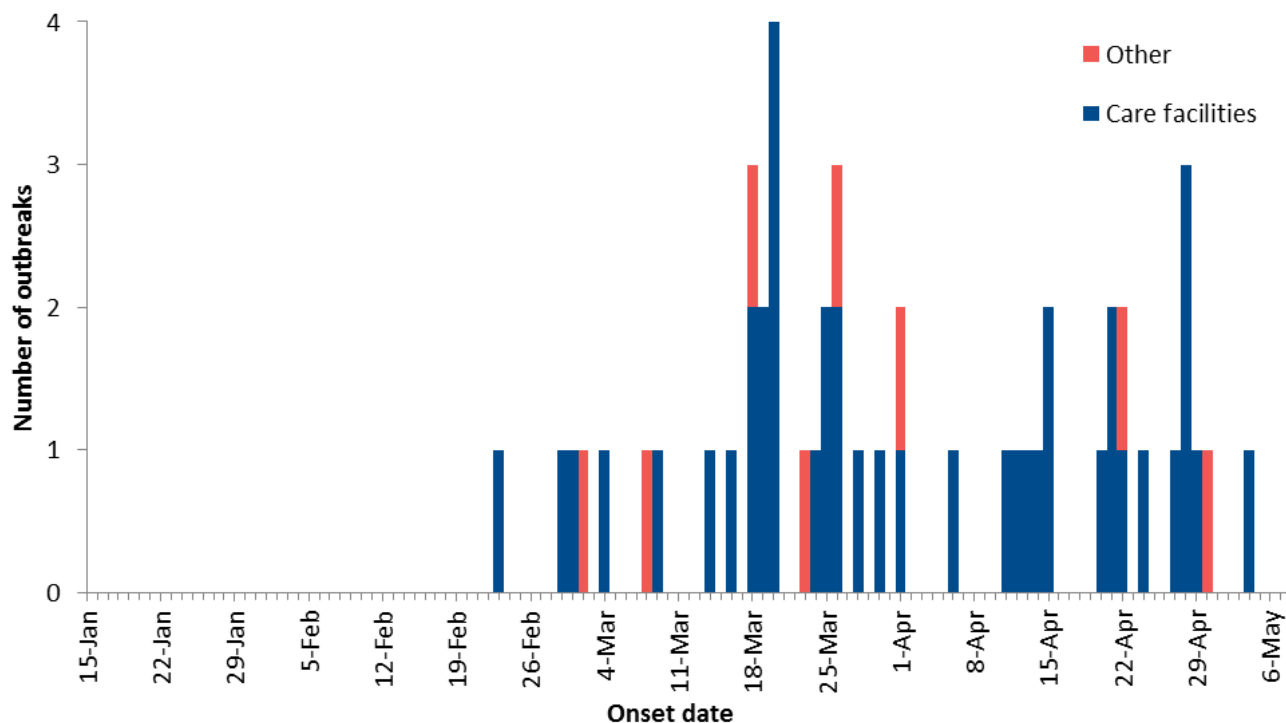
Figure 8: Counts of COVID-19 cases and proportions ever hospitalized, ever admitted to ICU, and with outcome of death by gender and age group, BC, January 1 - May 8, 2020 (N=2,309*)



* Includes cases with gender and age information available.

Note: Proportions calculated using the total number of cases in each gender and age group (displayed in top figure) as the denominator.

Figure 9: COVID-19 outbreaks* by earliest date, BC, January 15 - May 8, 2020 (N=49)**



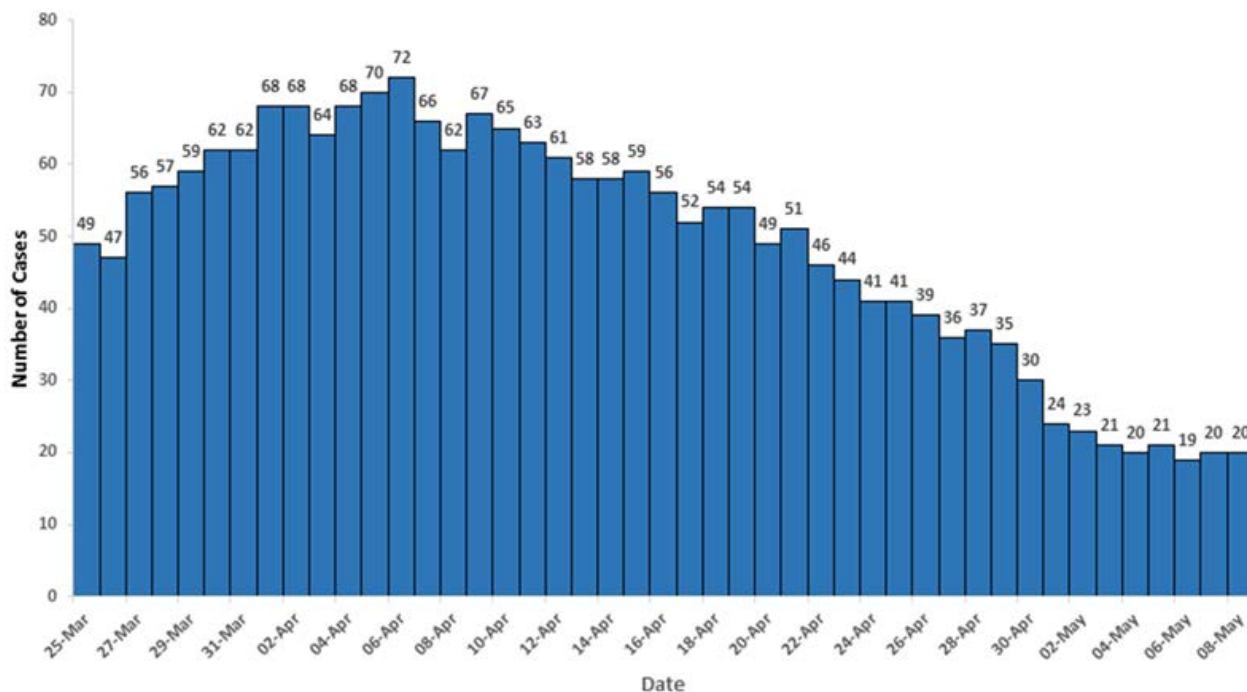
* Care facility (acute/longterm care/independent living) outbreaks have at least one lab-confirmed COVID-19 staff or resident. Other outbreaks have two or more lab-confirmed COVID-19 cases diagnosed within a 14-day period in closed or common settings (e.g. penitentiary, shared living or work setting).
** Earliest date is date of onset of earliest case in the outbreak (or reported date of earliest case when onset is unavailable) or date outbreak was declared.

Table 3: Outbreak and case counts of reported COVID-19 reported outbreaks*, BC, January 15 - May 8, 2020 (N=49)

	Care facility	Other settings	Total
Outbreaks			
Total outbreaks	41	8	49
New since last report	0	0	0
Active outbreaks	22	6	28
Outbreaks declared over	19	2	21
Outbreak cases			
Total cases	464	365	829
Residents/patients	282	122	404
Staff/other	182	243	425
Total deaths	81	2	83
Residents/patients	81	1	82
Staff/other	0	1	1

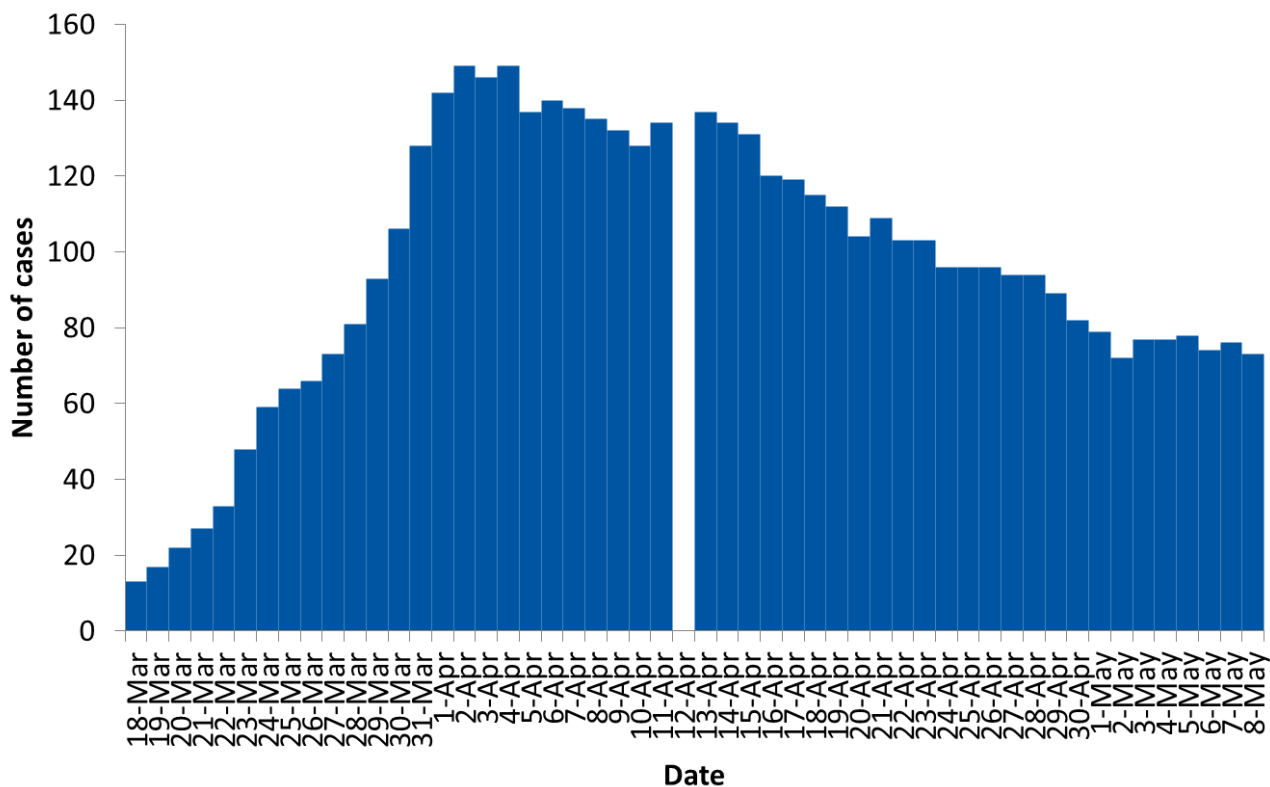
* Care facility (acute/longterm care/independent living) outbreaks have at least one lab-confirmed COVID-19 staff or resident. Other outbreaks have two or more lab-confirmed COVID-19 cases diagnosed within a 14-day period in closed or common settings (e.g. penitentiary, shared living or work setting).

Figure 10: Total positive COVID-19 cases in critical care by day, BC, March 25 - May 8, 2020



Data source: PHSA May 8. Note: critical care data may change over time due to small adjustments and improvements in data quality.

Figure 11: Number of confirmed COVID-19 cases in hospital by day, BC, March 18 - May 8, 2020

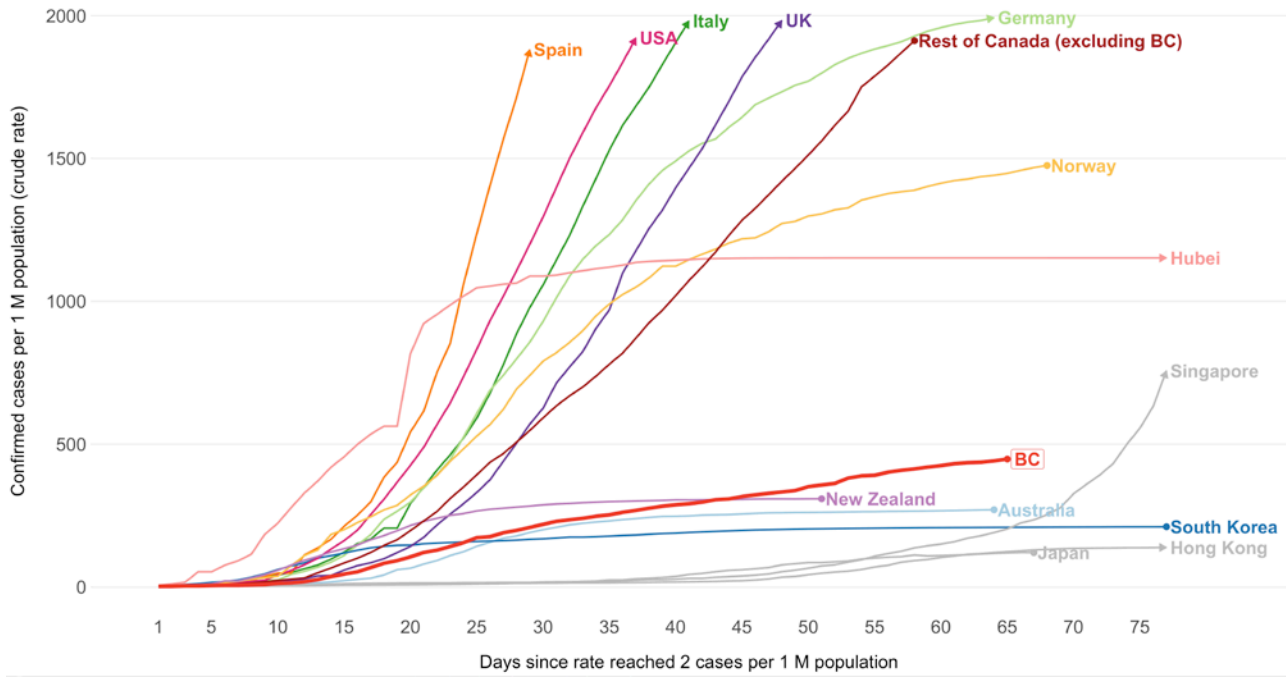


Data available starting March 18 and not available for April 12.

Note: Hospitalization data may be incomplete or out of date (i.e., under-estimates) owing to the timing and process for case status update. Four hospitalisations were added starting on May 3 due to data corrections. This does not reflect new admissions on that day but rather admissions occurring prior and up to this time.

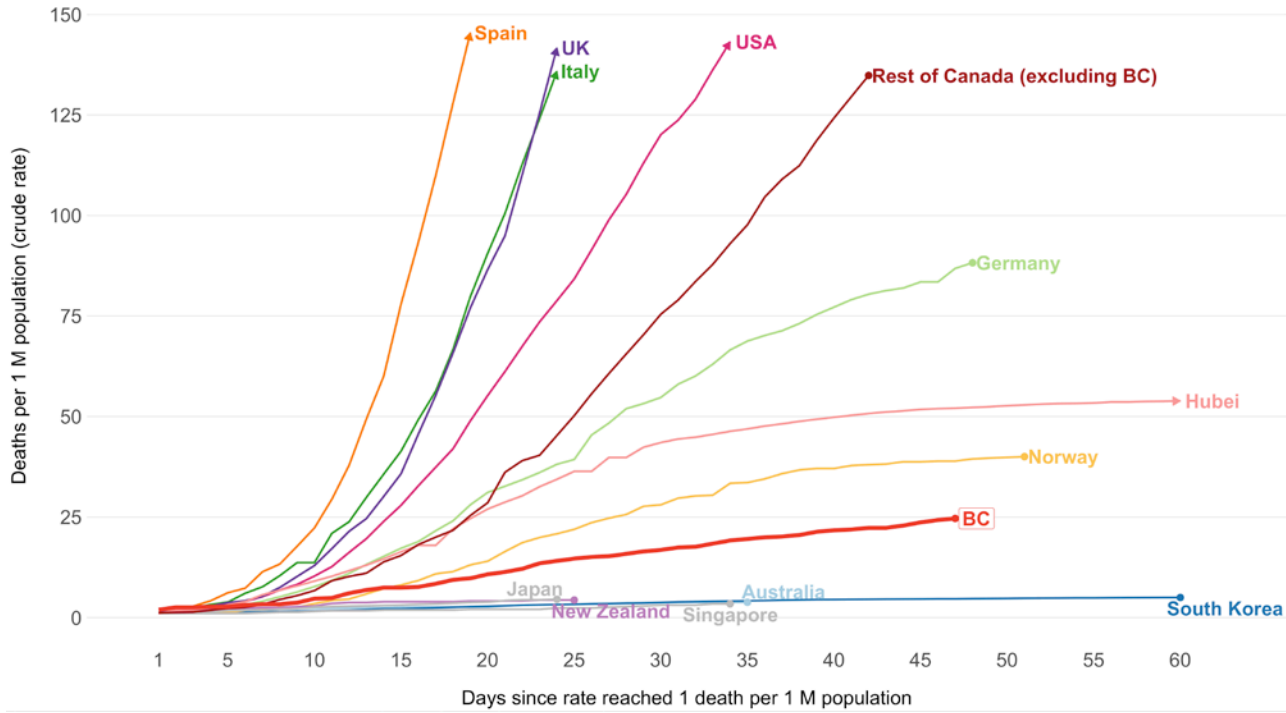
International and National Epidemiological Comparisons

Figure 12: Cumulative diagnosed COVID-19 case rates by select countries vs BC and Canada



Note: QC, and, to a lesser extent, ON, have the largest impact on the values for rest of Canada.

Figure 13: Cumulative COVID-19 death rates by select countries vs BC and Canada



Note: QC, and, to a lesser extent, ON, have the largest impact on the values for rest of Canada.

Figure 14: Cumulative diagnosed COVID-19 case rates in Canada

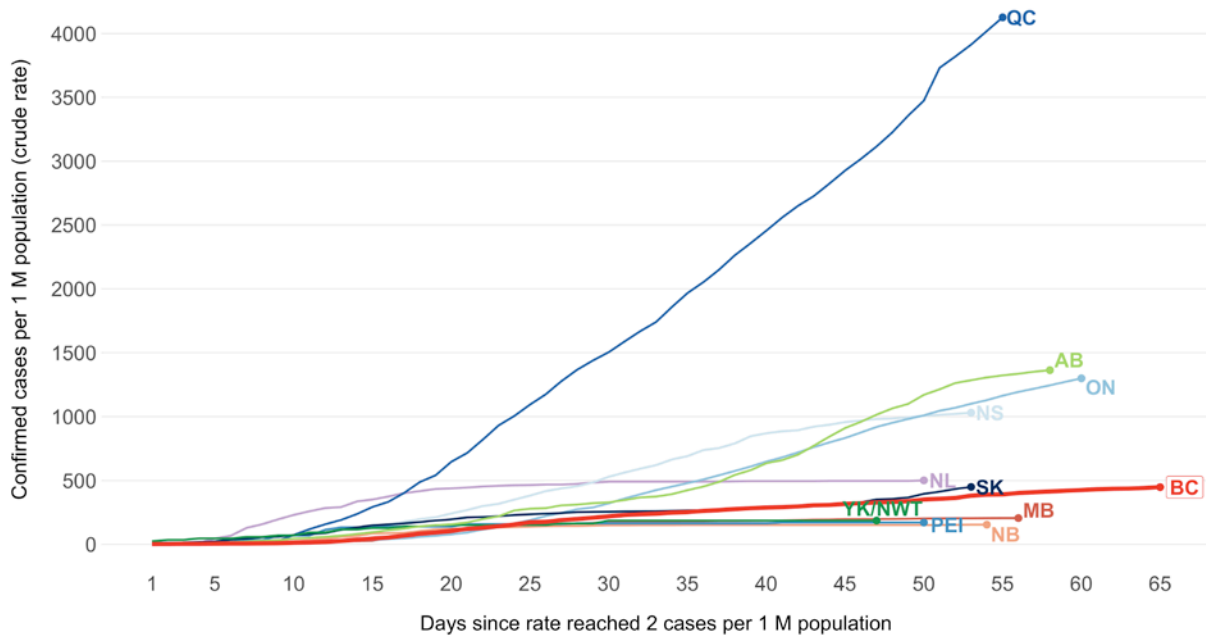
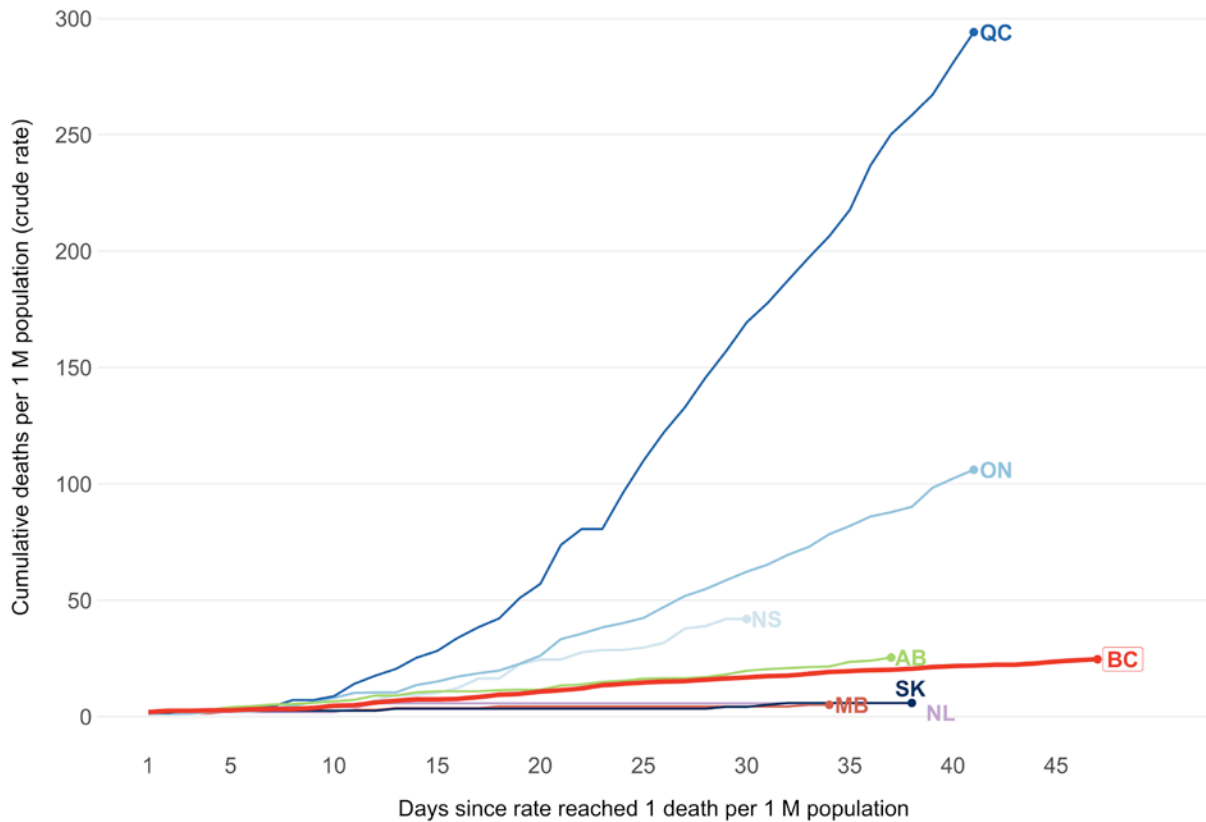


Figure 15: Cumulative COVID-19 death rates in Canada



Data sources for international and national epidemiological comparison (all extracted May 7, 2020):

JHU CSSE for global cases and deaths: <https://github.com/CSSEGISandData/COVID-19>

JHU CSSE for Canadian provincial deaths outside of BC

For Canadian provincial cases: Provincial data sources

BC cases and deaths: BCCDC

Global population denominator from the United Nations