

COVID-19: VoC Testing, Severity by VoC and Age

April 8, 2021



Stay Informed Via These Resources:

gov.bc.ca/Covid-19 | bccdc.ca | 1-888-COVID19

Symptom Self-Assessment:

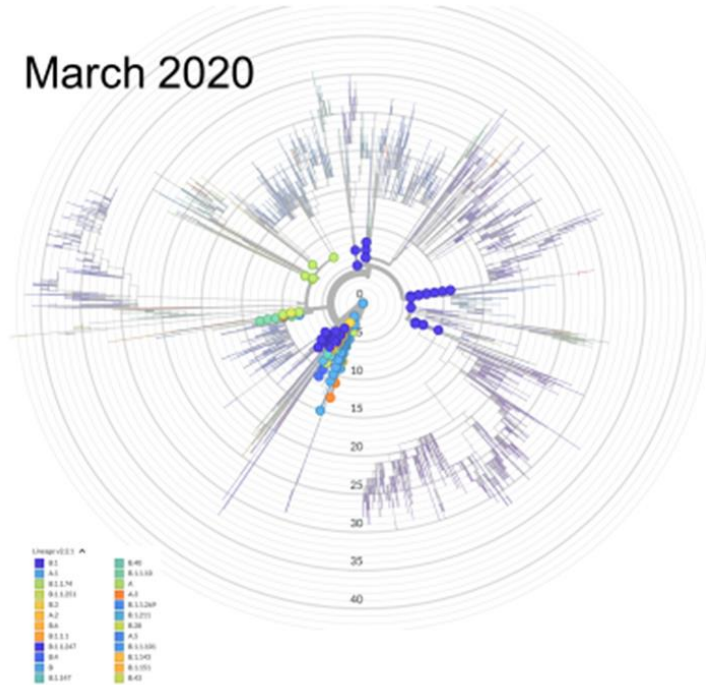
covid19.thrive.health



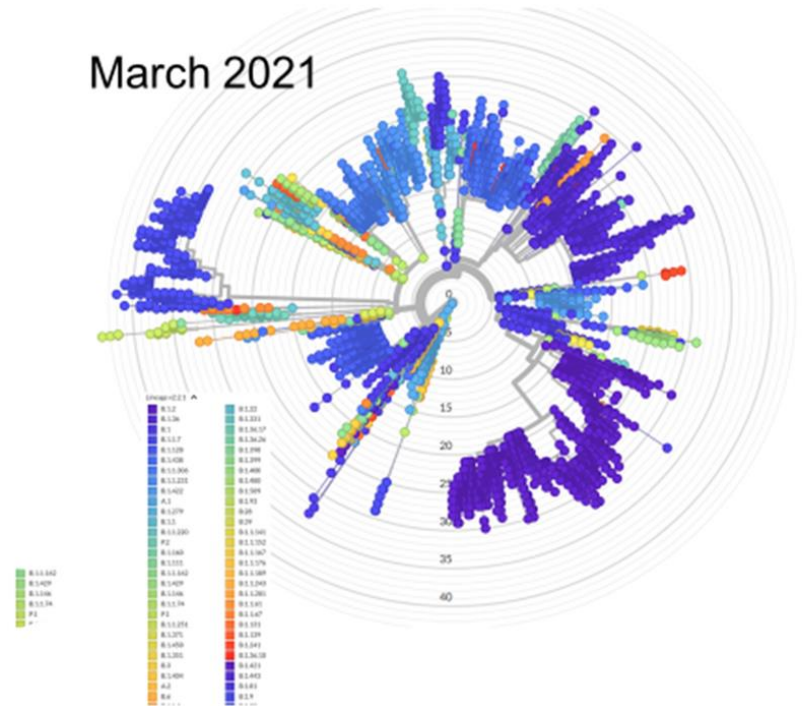
**BRITISH
COLUMBIA**

Evolution of SARS-CoV-2 Strains in BC Over the Last Year

March 2020

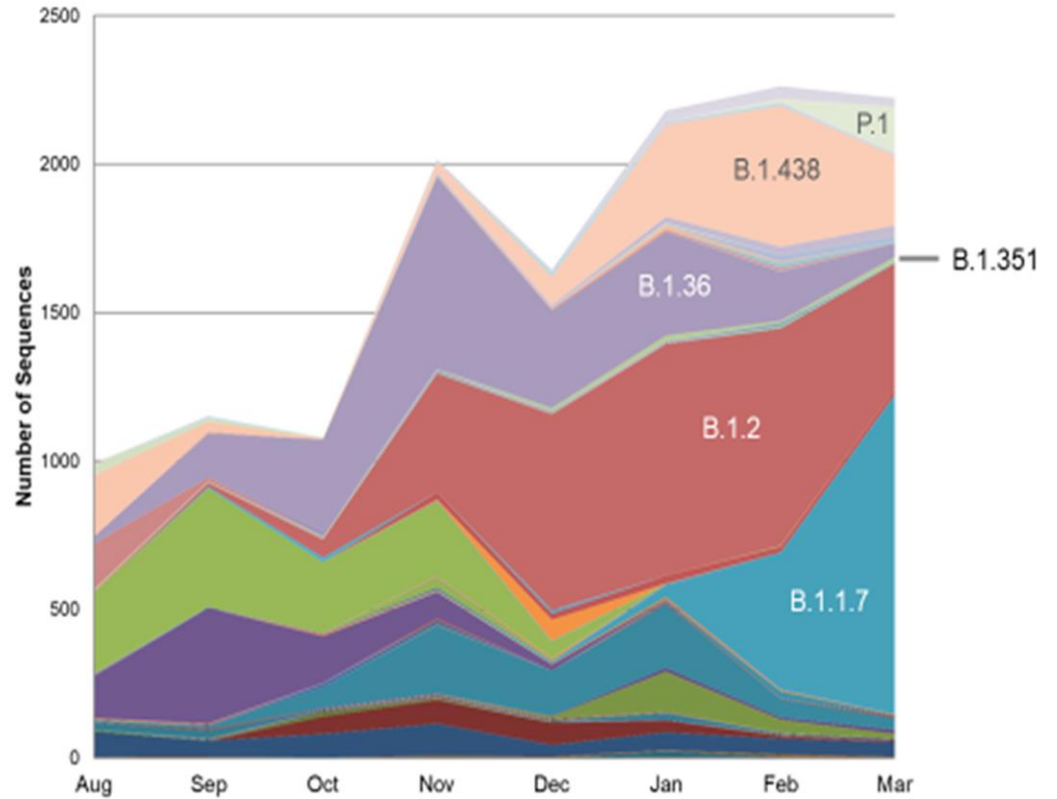


March 2021



Source: BCCDC Public Health Laboratory

Sequenced Lineages in BC Over Time



Source: BCCDC Public Health Laboratory

Variants of Concern, Variants Under Investigation and Lineages Identified in BC as of April 4, 2021

BC VoC / VUI frequencies

		First Detected	BC WGS
VoC	B.1.1.7	UK	2978
	B.1.351	SA	56
	P.1	Brazil/Japan	907
VUI	P.2	Brazil	139
	A.23.1	TBD	23
	A.23.1 + S-E848K	TBD	0
	A.27	TBD	0
	B.1.525	TBD	4
	B.1.1.318	TBD	1
	B.1.324.1 + S-E484K	TBD	0
	B.1.429	USA	154
	B.1.427	USA	5
	B.1.526.1	USA	1
	P.3	Philippines	0

(~19K Illumina WGS performed)

Highest frequency WGS lineages identified to 4/4/21

Lineage	WGS	Lineage	WGS	Lineage	WGS	Lineage	WGS
B.1.2	3496	B.1.351	56	B.1.1.216	10	C.31	4
B.1.1.7	2978	B.1.596	53	B.1.1.176	10	B.1.582	4
B.1.438	1608	B.1.1.431	43	B.1.36.22	9	B.1.567	4
B.1.128	1256	B.1.36.18	41	B.1.36.10	9	B.1.538	4
B.1.36.36	1145	B.1.617	39	B.1.234	9	B.1.526.1	4
AL.1	1088	B.1.577	37	B.1.521	8	B.1.525	4
P.1	907	B.1.568	34	B.1.36.31	8	B.1.1.432	4
AE.8	817	A.23.1	23	B.1.36.29	8	B.1.1.272	4
B.1.36	646	B.1.564.1	21	B.1.595	7	B.1.1.121	4
B.1	423	B.1.311	18	B.1.551	7	AE.4	4
B.1.279	417	B.1.243	18	B.1.453	7	B.1.523	3
B.1.1.464.1	372	A	18	B.1.258	7	B.1.509	3
B.1.422	331	C.34	16	B.1.1.192	7	B.1.405	3
B.1.36.37	193	B.1.480	16	B.1.1.161	7	B.1.400	3
B.1.573	176	B	14	B.1.110.3	7	B.1.398	3
B.1.429	154	B.1.177.87	13	B.1.221	6	B.1.36.26	3
B.1.1	144	B.1.177	13	B.1.1.316	6	B.1.1.63	3
P.2	139	B.1.36.8	12	B.1.111	6	B.1.147	3
B.1.160	112	B.1.1.28	12	B.1.427	5	B.1.1.464	3
B.1.36.38	93	B.1.240	11	B.1.153	5	B.1.1.416	3
B.1.1.519	66	B.1.1.231	10	B.1.1.317	5	B.1.1.306	3
B.1.561	60	B.1.1.222	10	C.36.1	4	B.1.1.291	3

pangoLEARN v

Source: BCCDC Public Health Laboratory

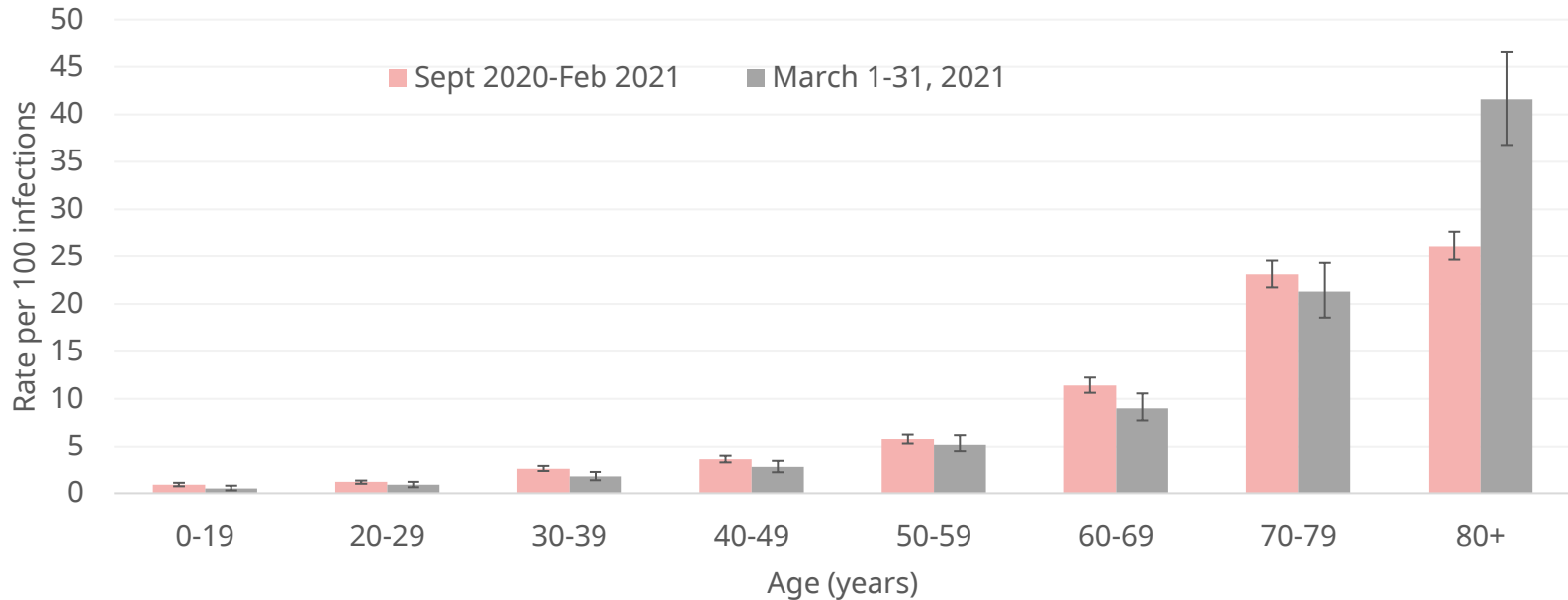
VoCs / VUIs Profiles

First Identified	US California		India		Nigeria / Europe		UK	Brazil	South Africa	Philippines	Brazil	
	B.1.427	B.1.429	B.1.617	B.1.1.318	B.1.525	B.1.1.7	P.1	B.1.351	B.1.1.28	P.2	R.1	R.2
	S-1452R	S-513I	S-T95I	ORF1a-SGFDel	ORF1a-SGFDel	ORF1a-SGFDel	ORF1a-SGFDel	ORF1a-SGFDel	S-141-143del	S-E484K	S-W152L	S-E484K
	S-D614G	S-W152C	S-E154K	S-T95I	S-A67V	S-69/70del	S-L18F	S-K417N	S-E484K	S-D614G	S-E484K	S-D614G
		S-L452R	S-L452R	S-144del	S-69/70del	S-144del	S-T20N	S-E484K	S-N501Y	S-V1176F	S-D614G	S-Q677H
		S-D614G	S-E484Q	S-E484K	S-144del	S-N501Y	S-P26S	S-N501Y	S-D614G		S-G769V	S-T732S
			S-D614G	S-D614G	S-E484K	S-A570D	S-D138Y	S-D614G	S-P681H			S-E1202Q
			S-P681R	S-P681H	S-D614G	S-D614G	S-R190S	S-A701V	S-E1092K			
			S-Q1071H	S-D796H	S-Q677H	S-P681H	S-K417T		S-H1101Y			
					S-F888L	S-T716I	S-E484K		S-V1176F			
						S-S982A	S-N501Y					
						S-D1118H	S-D614G					
							S-H655Y					
							S-T1027I					

VoC

Source: BCCDC Public Health Laboratory

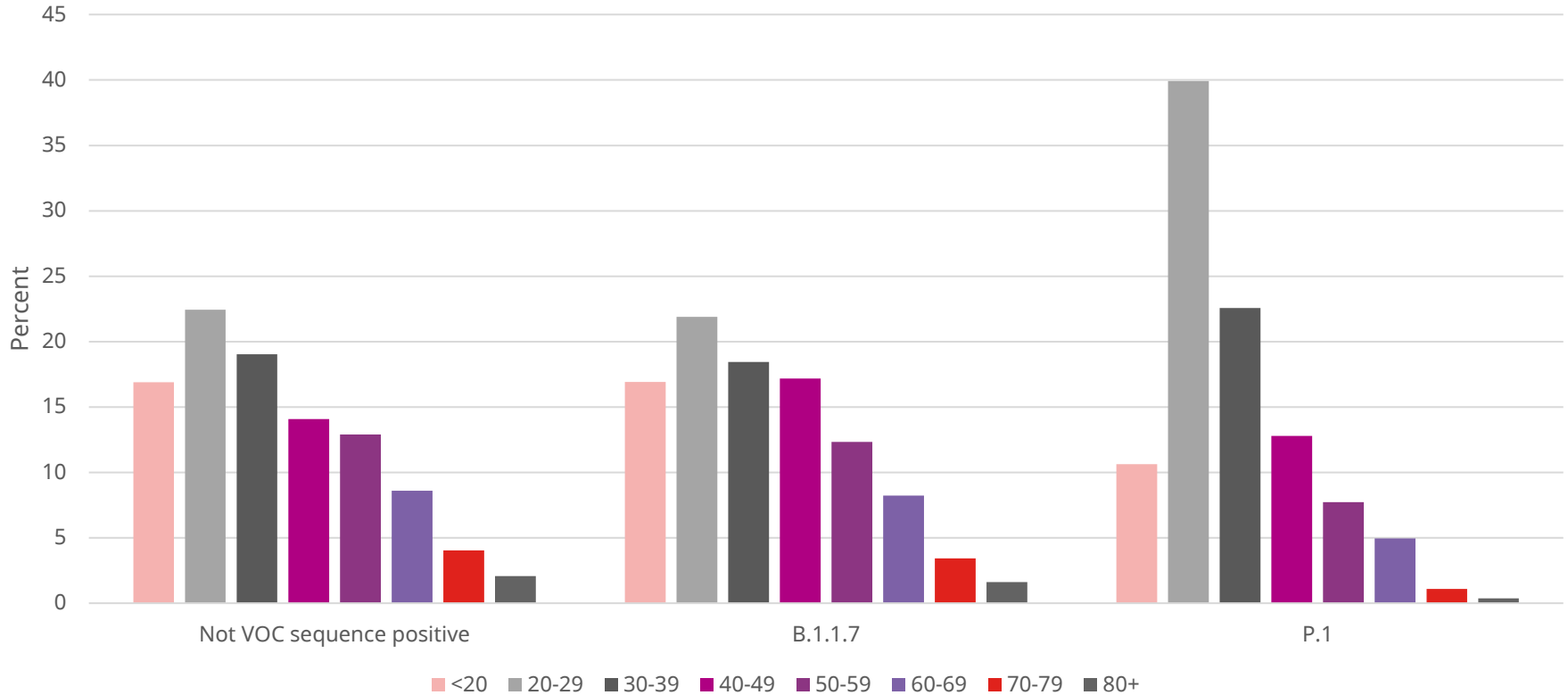
Rate of Hospitalization by Age for the Time-Periods September 2020-February 2021 and March 2021



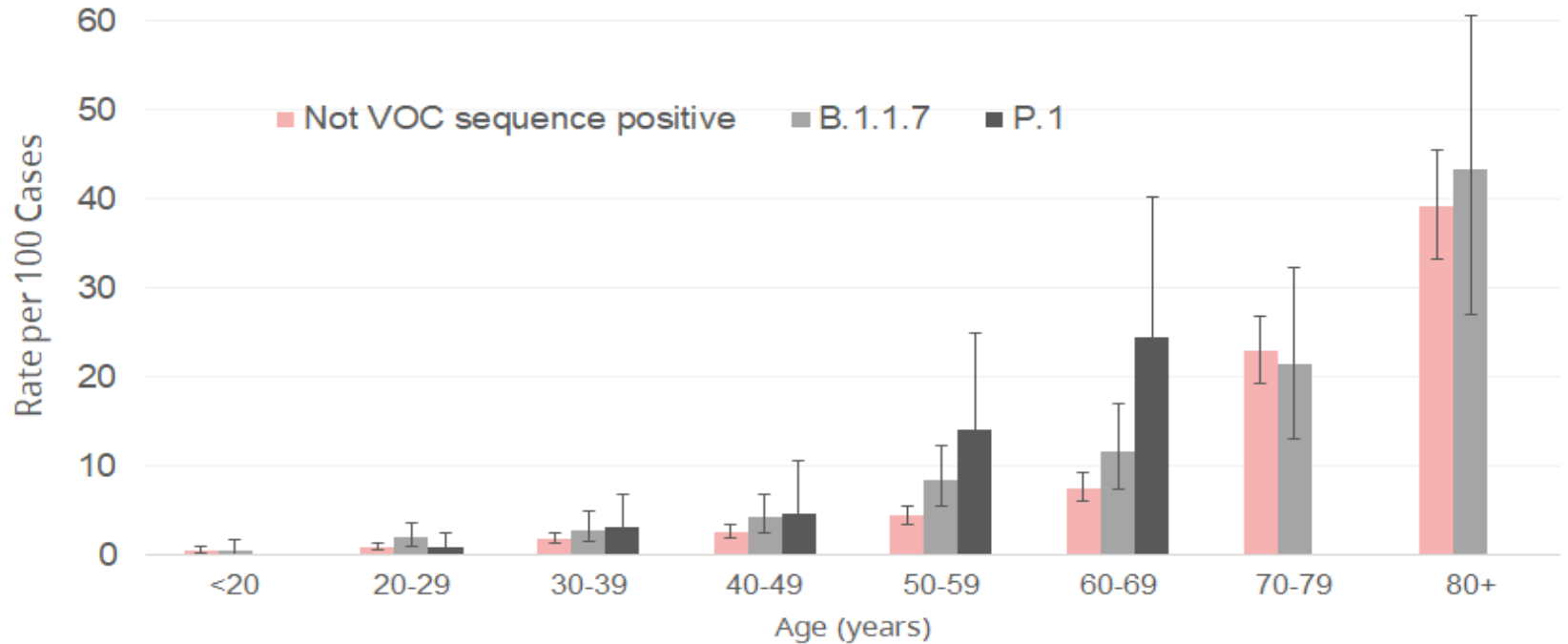
Analysis of Hospitalization by VoC: March 1 to 26

15,472 individuals diagnosed with COVID-19:	643 (4.2%) were hospitalized
12,314 (80%) were not VOC sequence positive:	487 (4.0%) were hospitalized
2,311 (14.9%) were classified as B.1.1.7:	120 (5.2%) were hospitalized
829 (5.4%) were classified as P.1:	36 (4.3%) were hospitalized
18 (0.1%) were classified as B.1.351:	0 (0%) were hospitalized

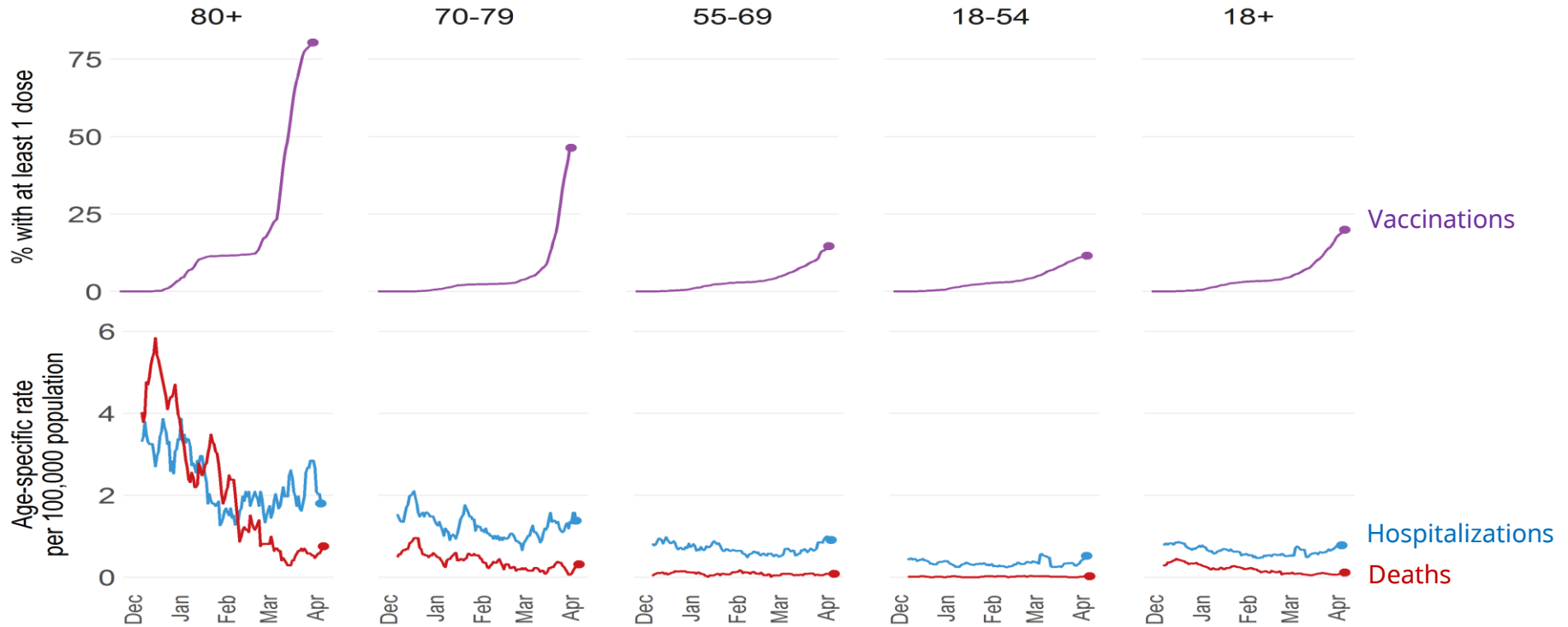
Distribution VoC Cases by Age Group



Rate of Hospitalization Per 100 Cases by VoC and Age Group



Percent of Population With at Least One Dose of Vaccine by Age and Age-Specific Rate of Hospitalizations and Deaths



COVID-19: VoC Testing, Severity by VoC and Age

April 8, 2021



Stay Informed Via These Resources:

gov.bc.ca/Covid-19 | bccdc.ca | 1-888-COVID19

Symptom Self-Assessment:

covid19.thrive.health



**BRITISH
COLUMBIA**