

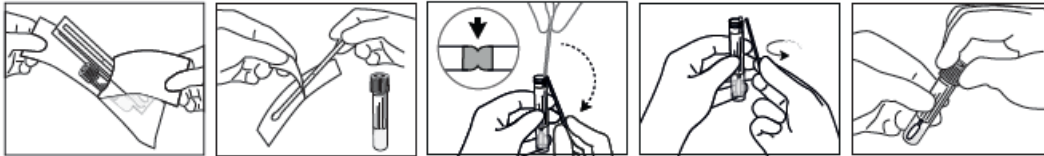
STI (*Chlamydia trachomatis*, *Neisseria gonorrhoeae*, *Trichomonas vaginalis* and/or *Mycoplasma genitalium*) Test Sample Collection Instructions Using Copan UTM 3 mL with Regular Flocked Swab

- Collection Device: CA306C - 3mL UTM Reg Floc (50/pk) (red cap) (**different from Influenza/COVID or HSV/VZV swabs**)
- Storage Temperature Pre Collection: 5-25°C
- Post Collection (sample) Stability: 2-8°C for up to 1 week



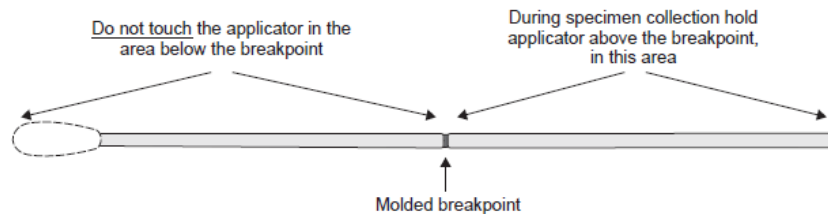
Sample Collection Instructions:

Fig 1. Collection swab showing breakpoint and area for holding the applicator



Sterile gloves and protective clothing and eyewear should be worn when collecting and handling microbiology specimens and care should be taken to avoid splashes and aerosols when breaking the swab stick into the tube of medium. During sample collection when handling the swab applicator, the operator must not touch the area below the breakpoint; that is the area from the breakpoint to the tip of the nylon flocked swab, as this will lead to contamination of the applicator shaft thus invalidating the test results.

1. Open Copan UTM package and remove transport tube and swab.
****Do not discard media inside the UTM transport tube at any time****
2. Open swab package making sure not to break the swab or touch the applicator between the flocked tip and breakpoint (see image).



3. Collect sample:
 - a. **Vaginal/Rectum:** Insert ~ 5 cm, rotate for 10-30 sec
 - b. **Endocervical:** Insert into canal, rotate for 10-30 sec
 - c. **Throat:** Swab tonsils and posterior pharynx (avoid tongue/cheeks)
 - d. **Lesion:** Rotate over lesion for 10-30 sec
 - e. **Eye:** Gently rotate the swab over lower conjunctiva 2–3 times to dislodge and collect infected cells. Avoid touching the eyelashes, eyelid margins, or the cornea
4. Remove the cap off the transport tube (UTM container) making sure not to spill the media.
5. Insert swab into the transport tube with the media until breakpoint of swab is aligned with the top of the tube. Bend the swab 180° to break off at breakpoint. May need to bend back and forth a couple times to break.
6. Replace cap on transport tube and discard handling portion of applicator.

Do not discard media inside the UTM tube at any time. Swab should be transported to lab in the media.