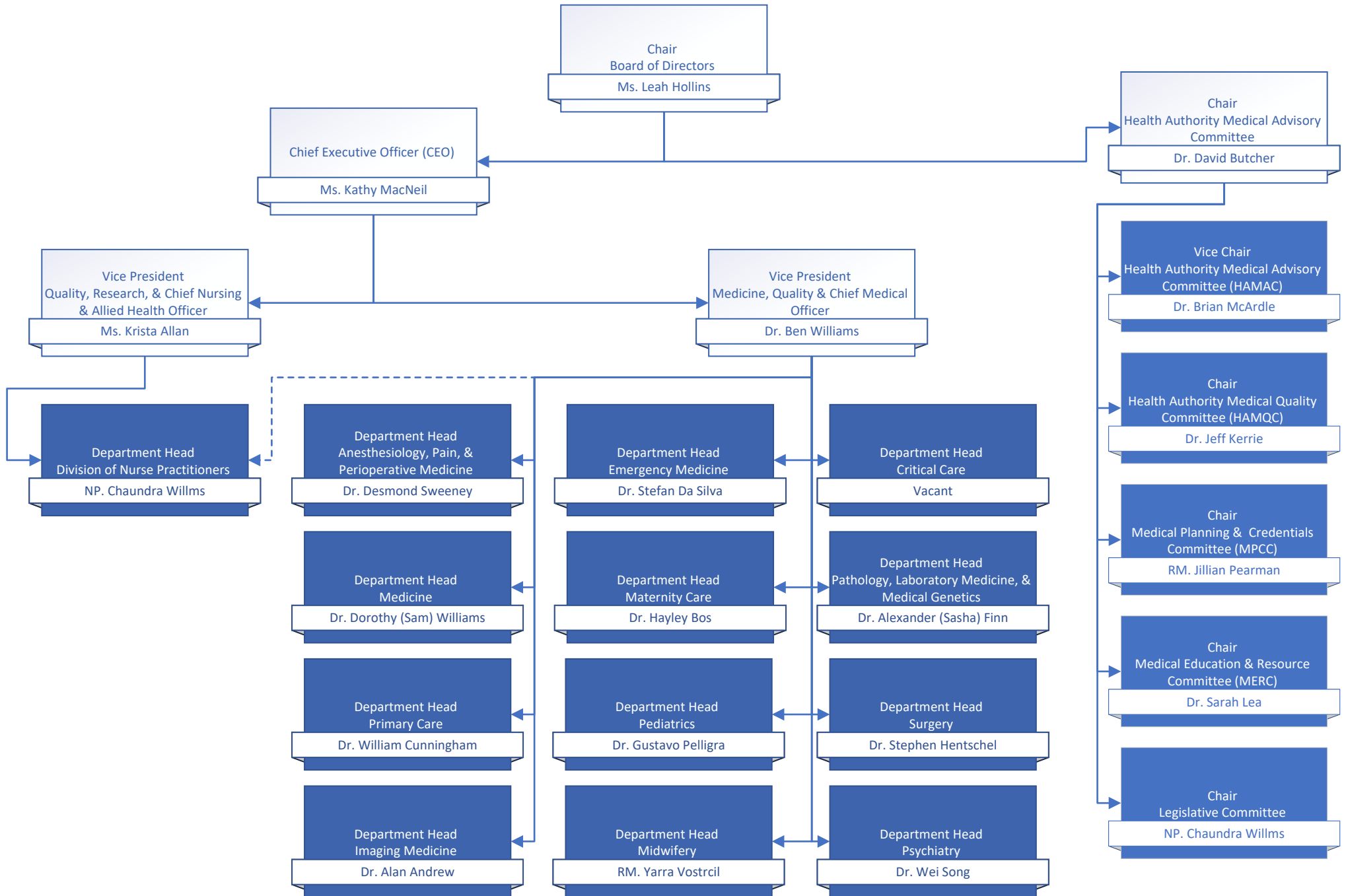
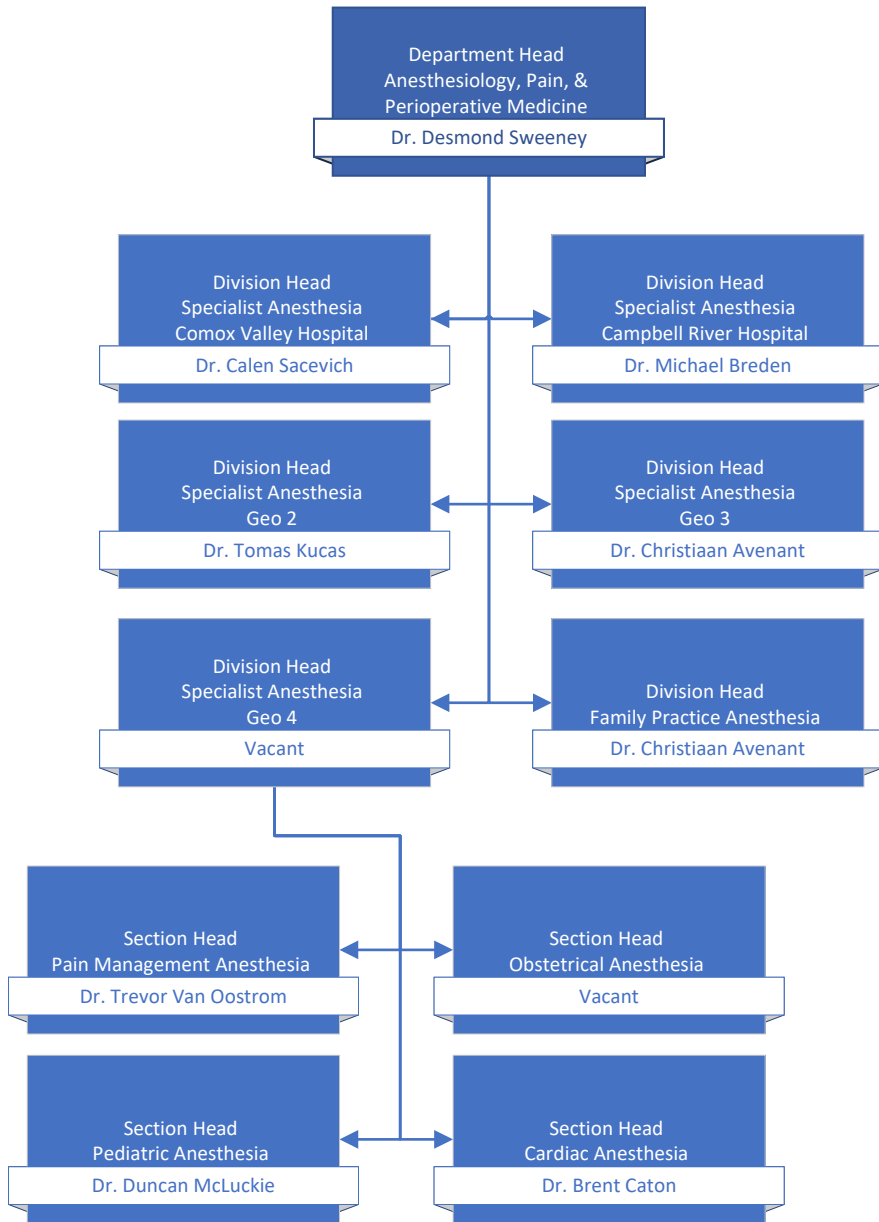


Table of Contents	page #
Medical Staff Governance	2
Departments of: Anesthesiology, Pain, & Perioperative Medicine Emergency Medicine Critical Care	3
Departments of: Imaging Medicine Pathology, Laboratory Medicine, & Medical Genetics Psychiatry	4
Departments of: Maternity Care Pediatrics Midwifery Division of Nurse Practitioners	5
Department of Medicine	6
Department of Primary Care	7
Department of Surgery	8
Operational Executive Leadership	9
Medical & Academic Affairs	10
Medication Systems & Medical Informatics Quality & Safety	11
Surgery, Ambulatory Care, & Cancer Care Strategy	12
Mental Health & Substance Use Addiction Medicine	13
Comox Valley, Campbell River, Port Alberni & North Island/Long Term Care & Assisted Living	14
Comox Valley Hospital Campbell River Hospital West Coast General Hospital	15
Long Term Care Geo 1 & 2	16
Long Term Care Geo 3 & 4	17
Nanaimo/Imaging Medicine & Laboratory	18
Pathology, Laboratory Medicine, & Medical Genetics Operations Imaging Medicine Operations	19
Cowichan Valley	20
Greater Victoria Acute Care/Pediatrics, Midwifery, & Maternal Health	21
Royal Jubilee Hospital Victoria General Hospital	22
Pediatrics Operations Midwifery Operations Maternal Health Operations	23
Saanich Peninsula & Gulf Islands/Seniors & Primary Care	24
Palliative & End of Life Care Seniors Health Urgent Primary Care Centres	25

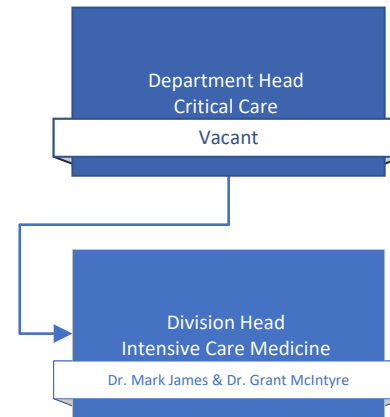
Medical Staff Governance



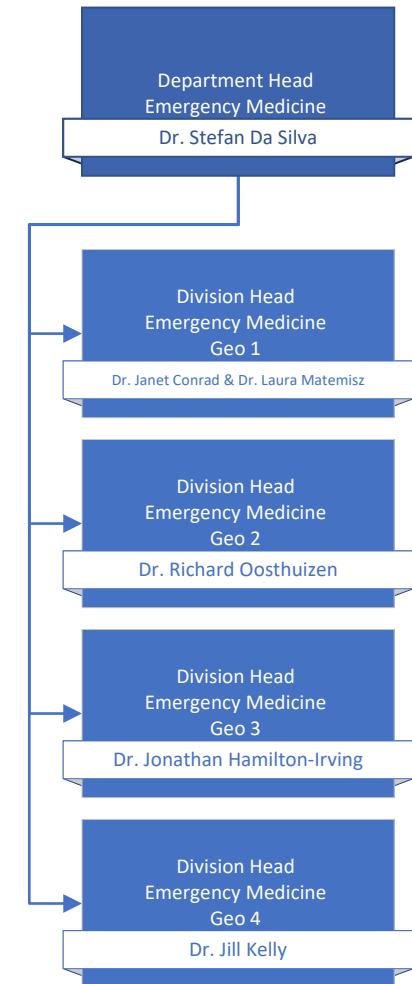
Department of Anesthesiology, Pain, & Perioperative Medicine



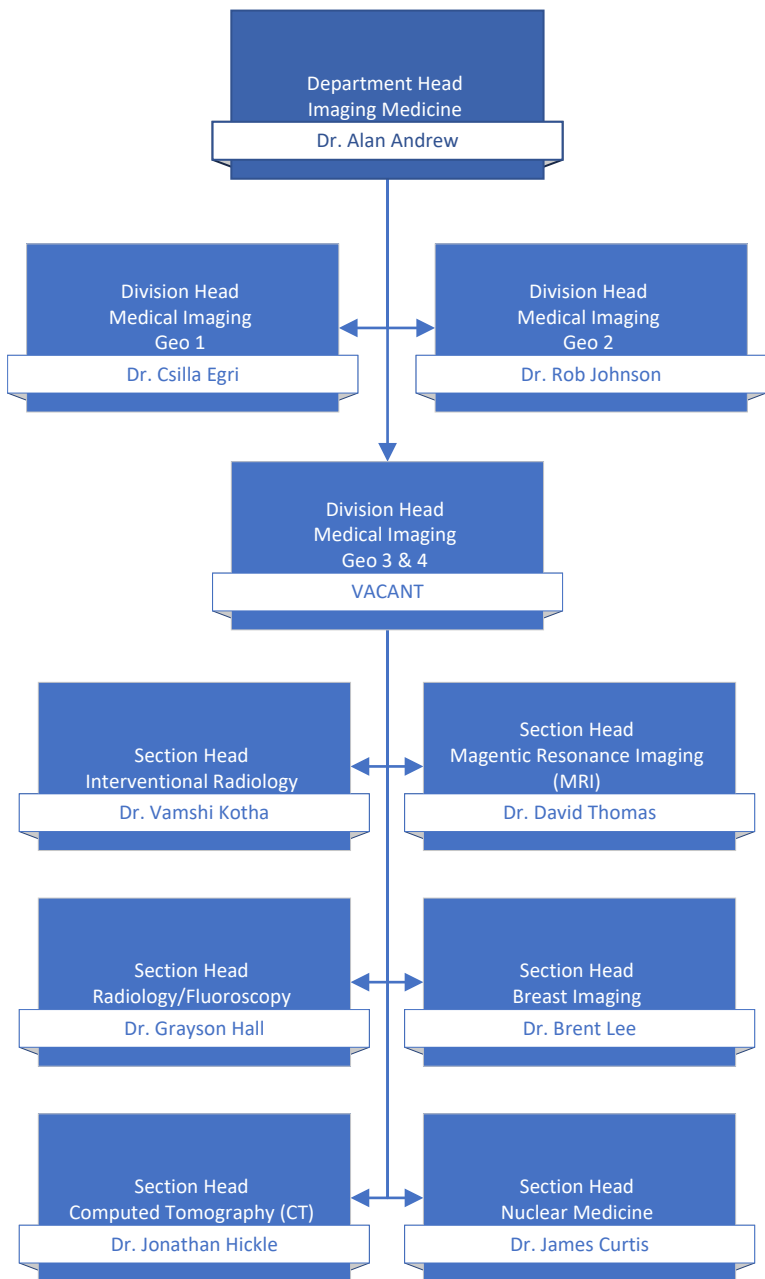
Department of Critical Care



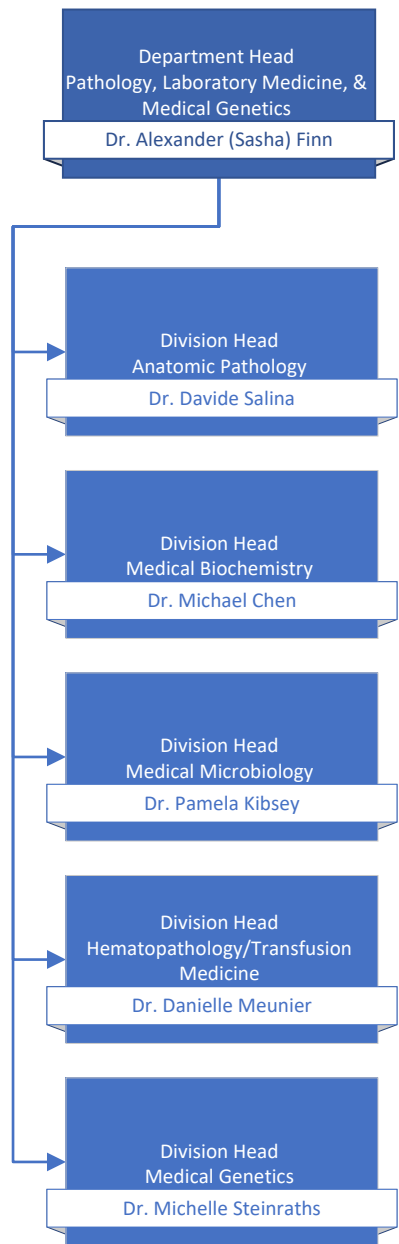
Department of Emergency Medicine



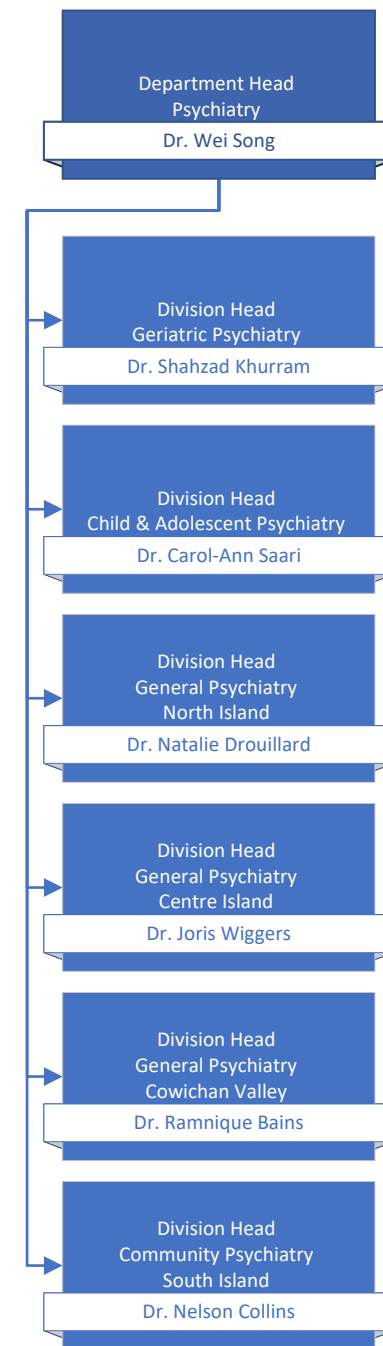
Department of Imaging Medicine



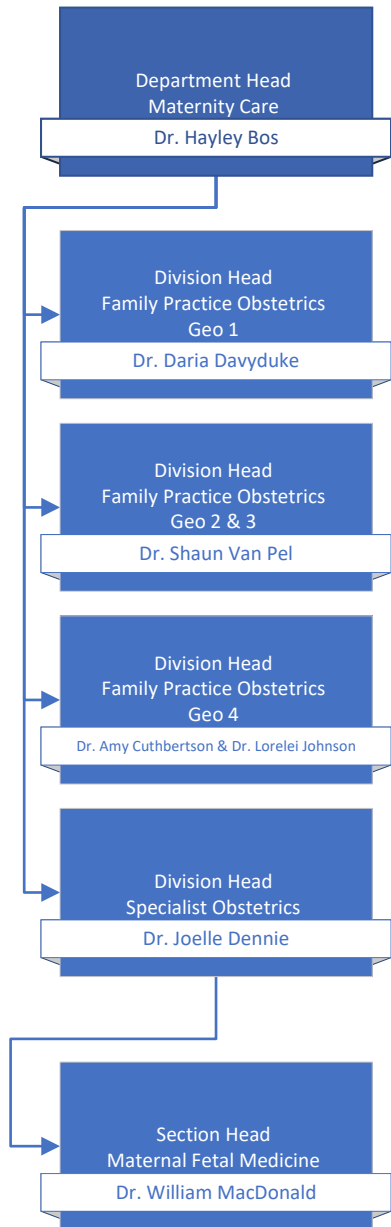
Department of Pathology, Laboratory Medicine, & Medical Genetics



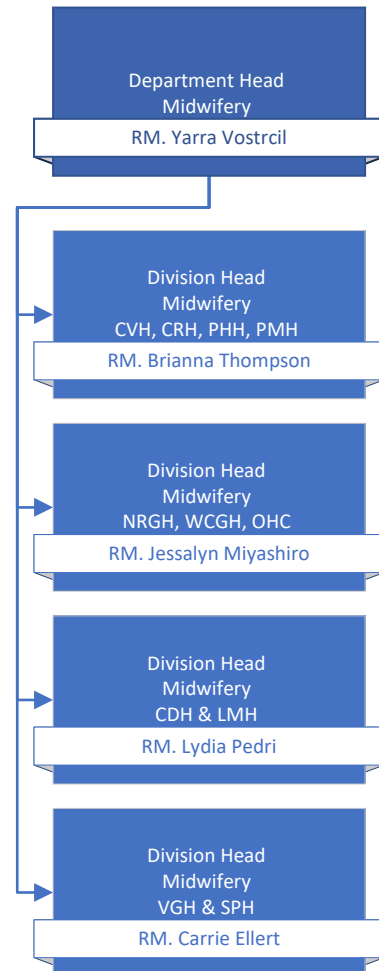
Department of Psychiatry



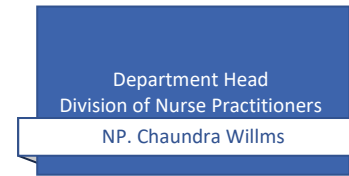
Department of Maternity Care



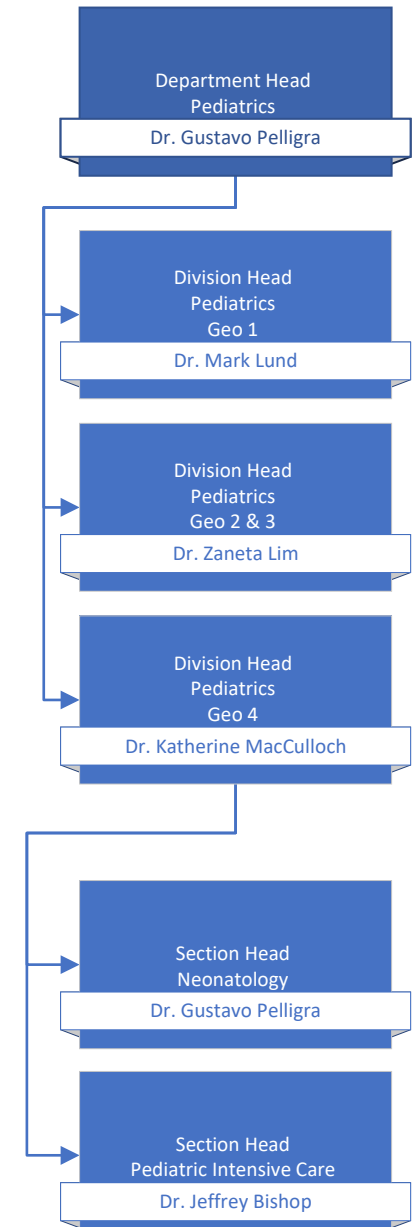
Department of Midwifery



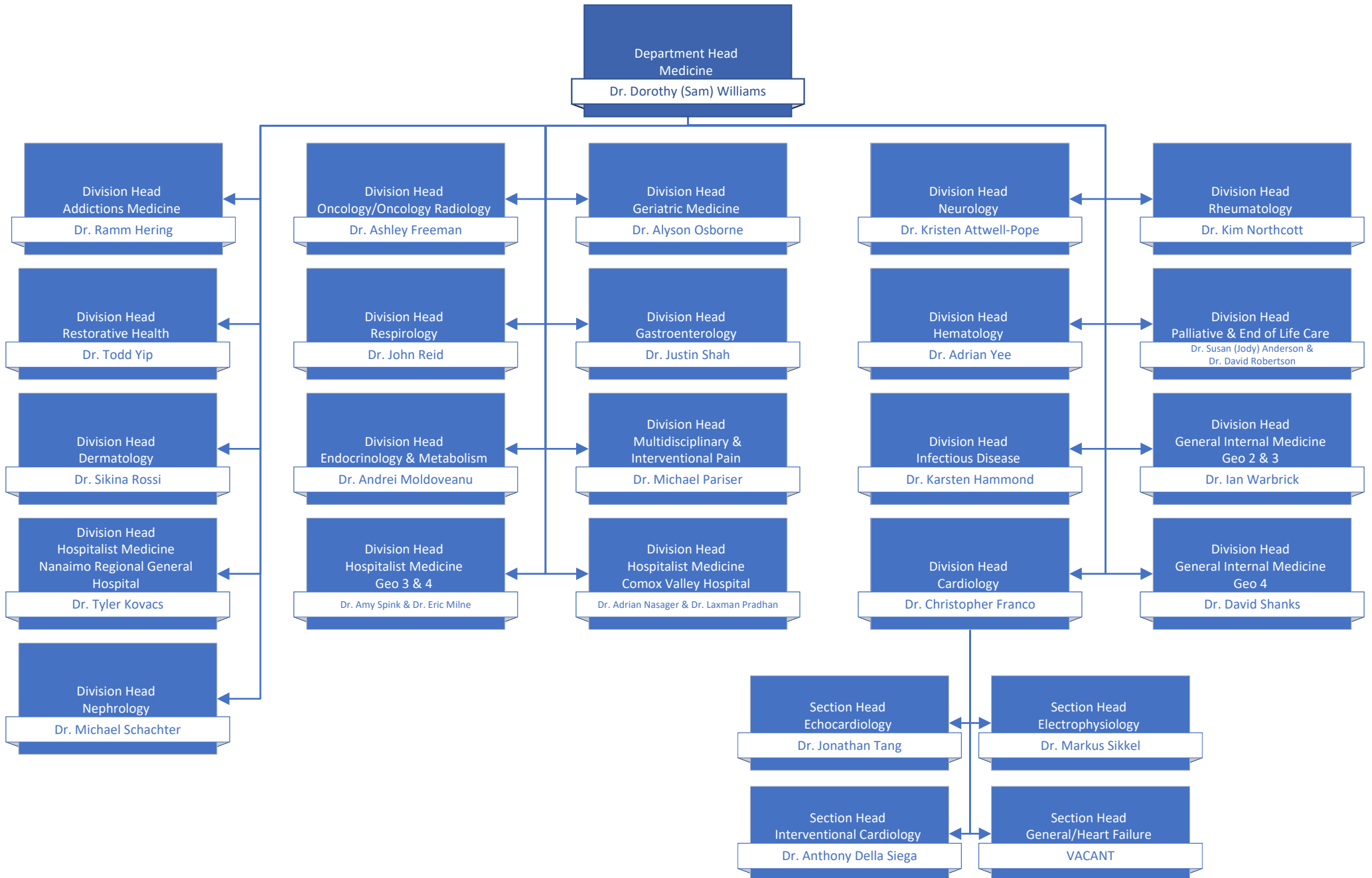
Department of Nurse Practitioners



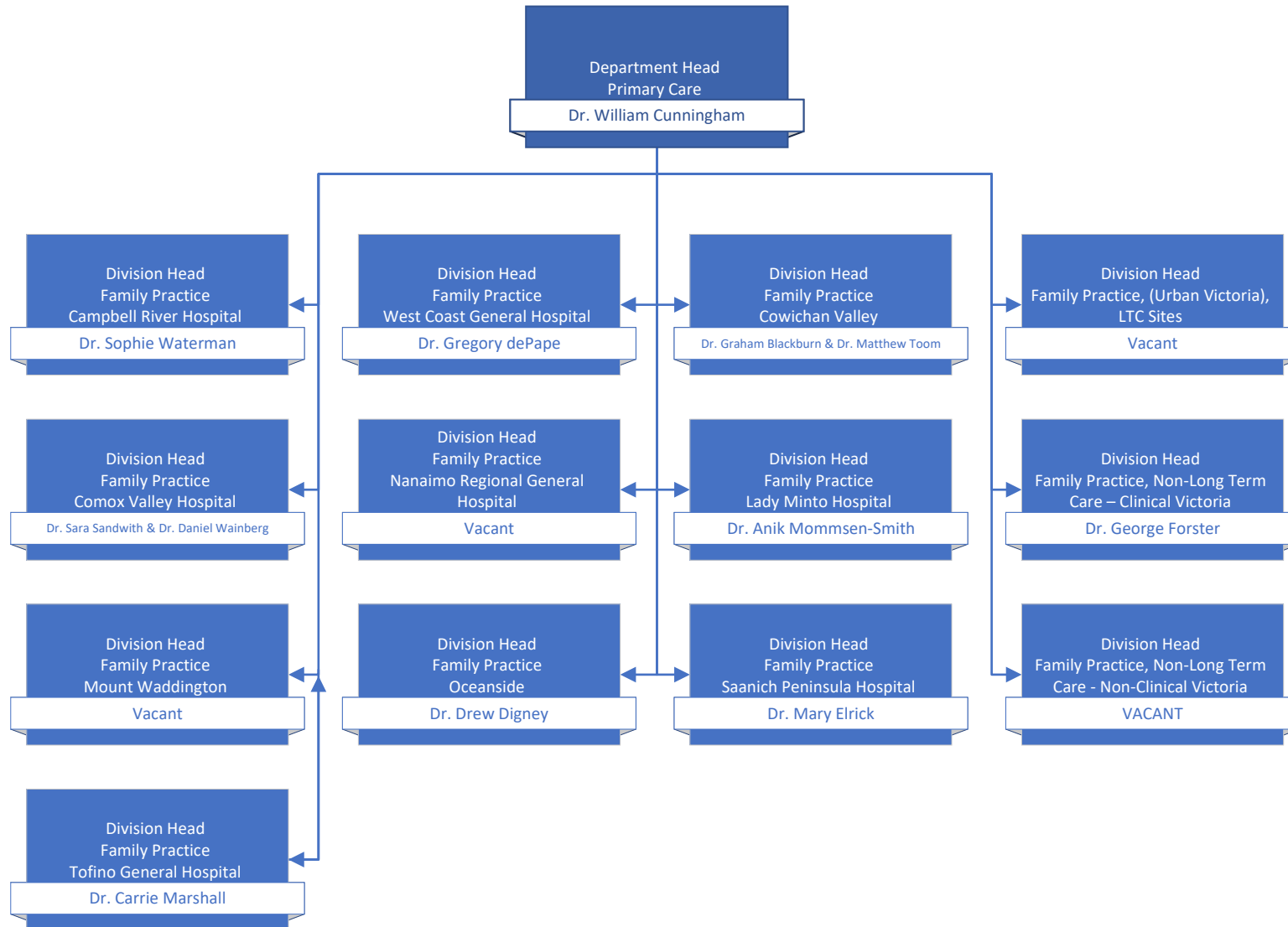
Department of Pediatrics



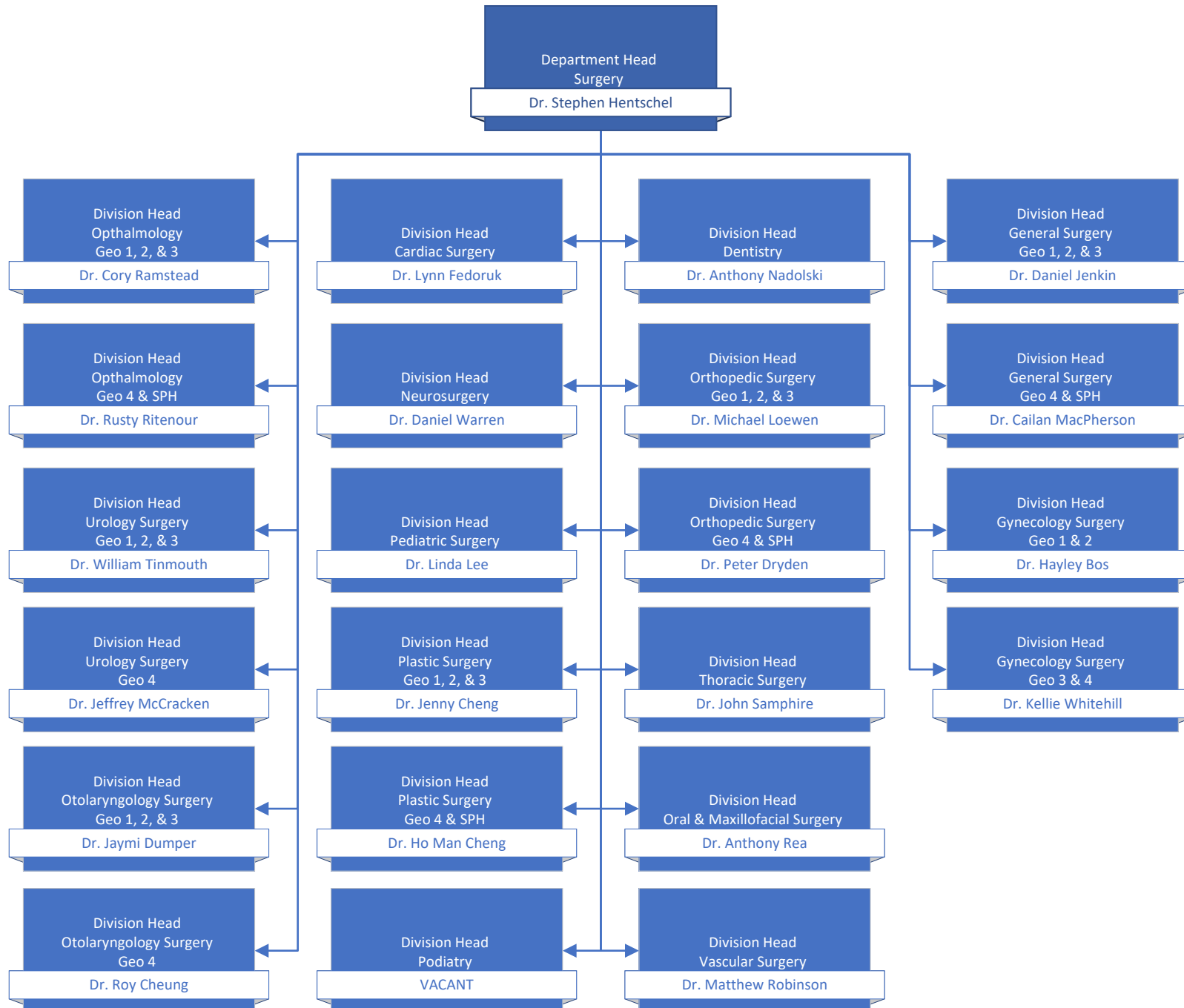
Department of Medicine



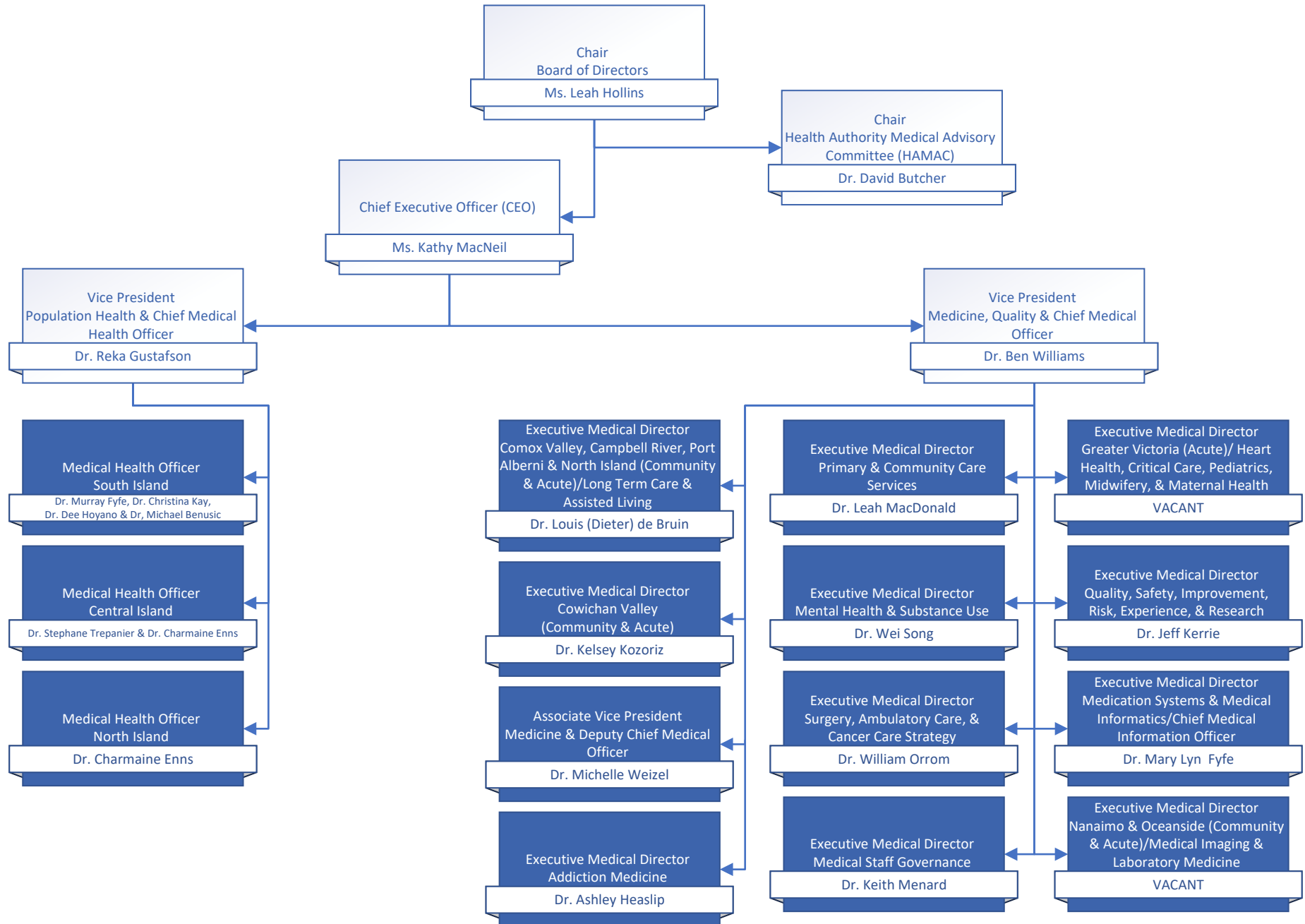
Department of Primary Care



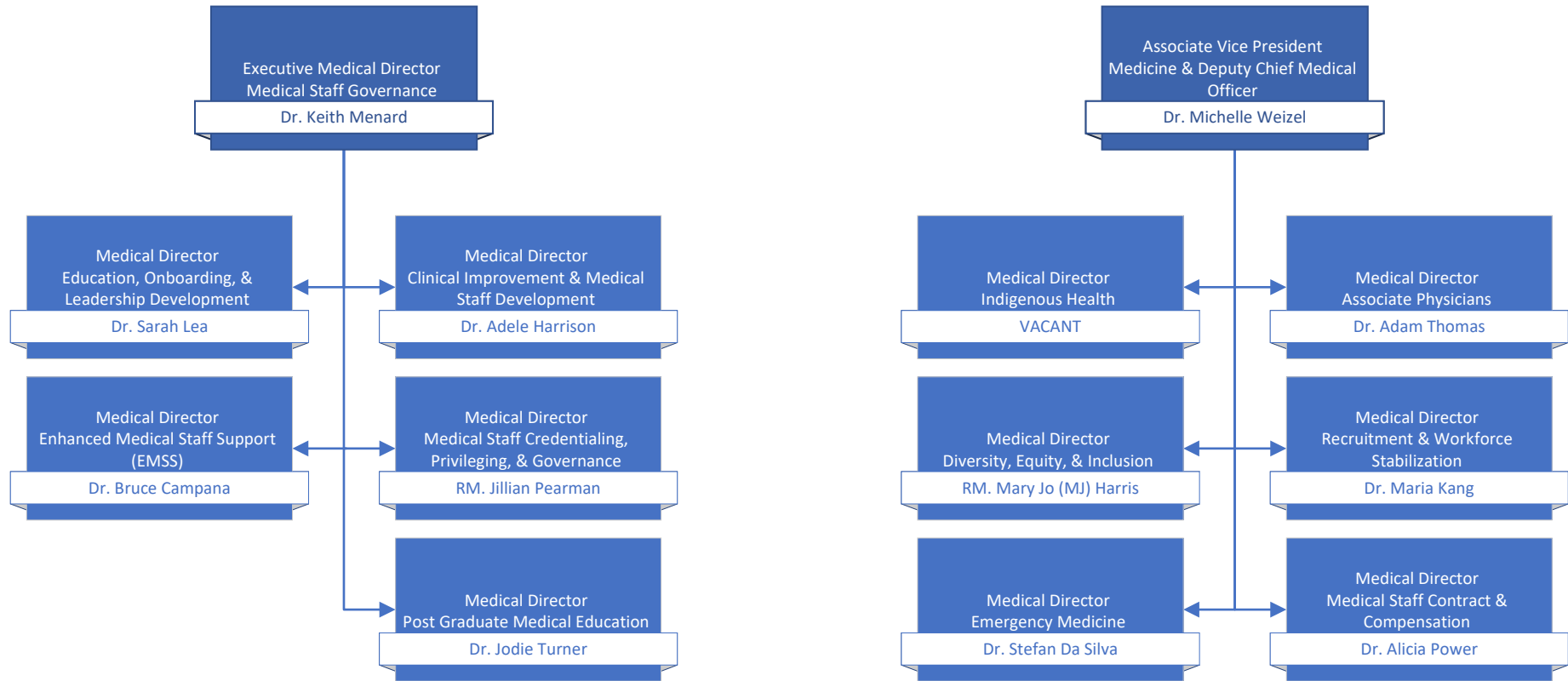
Department of Surgery



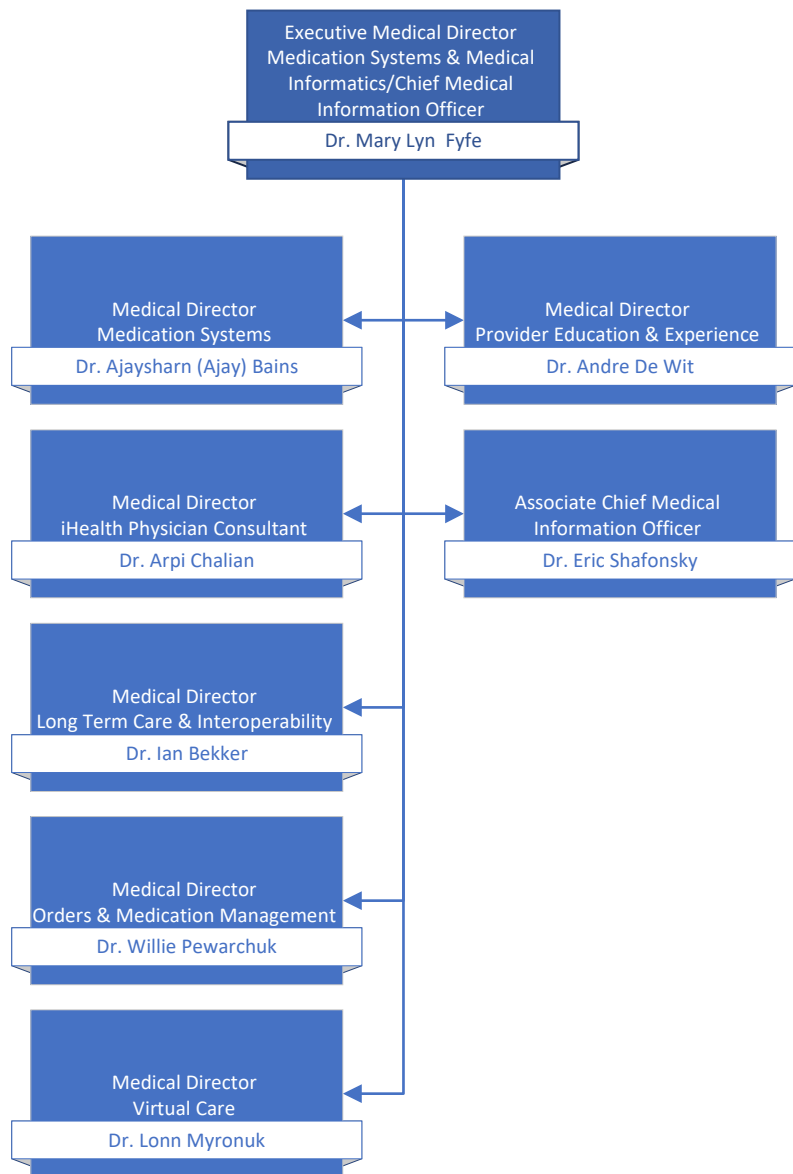
Operational Executive Leadership



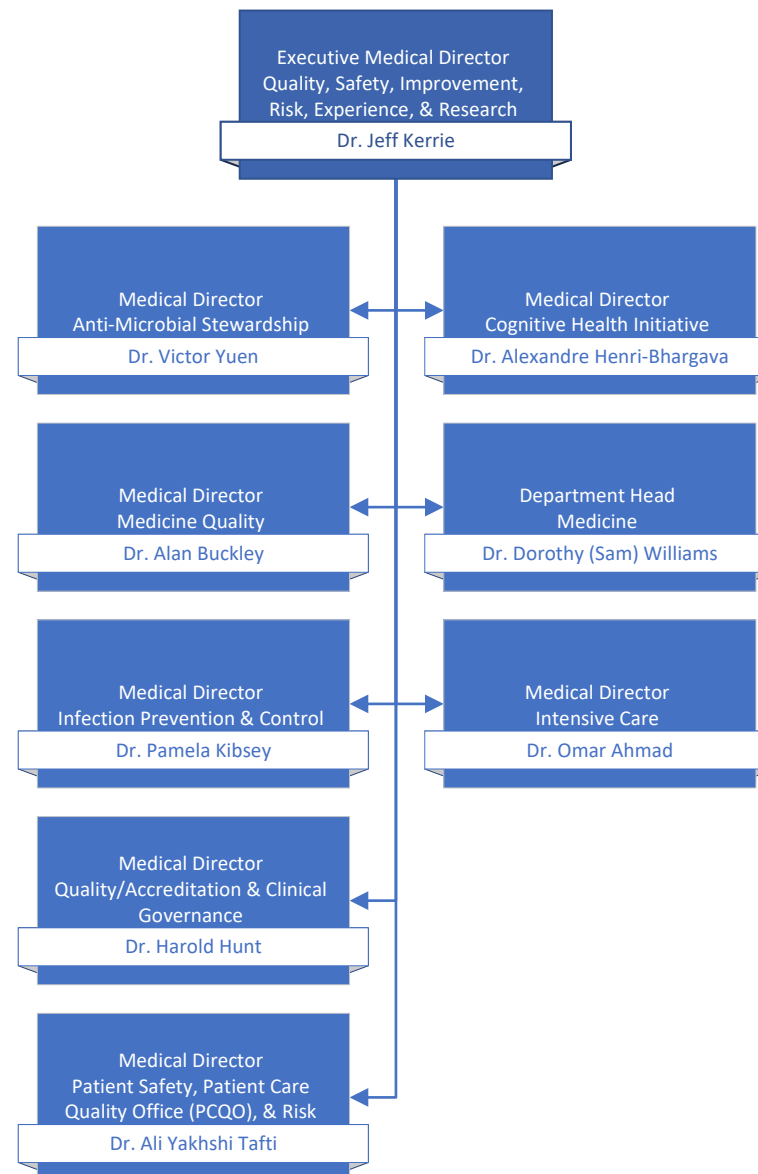
Medical & Academic Affairs



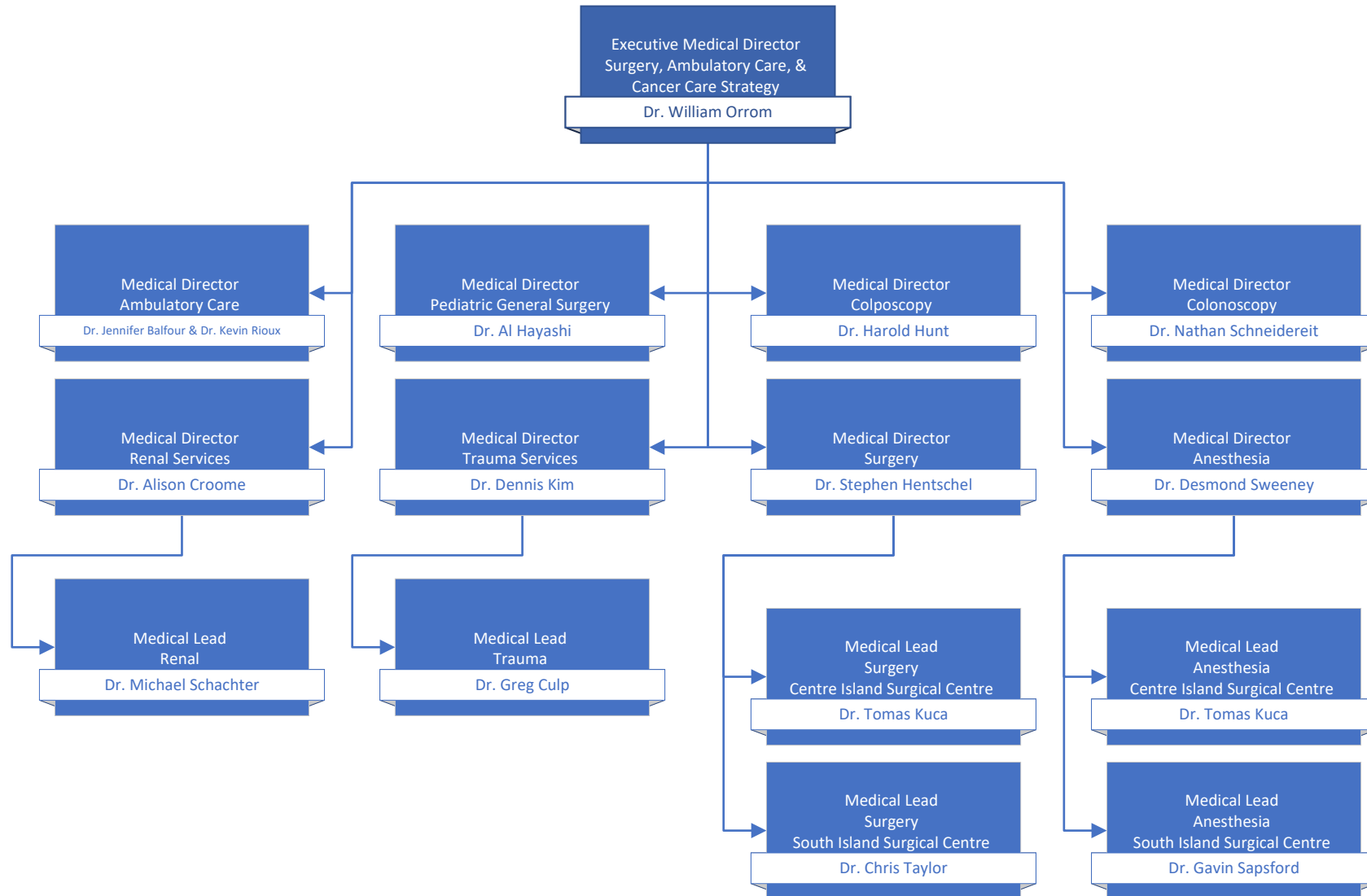
Medication Systems & Medical Informatics



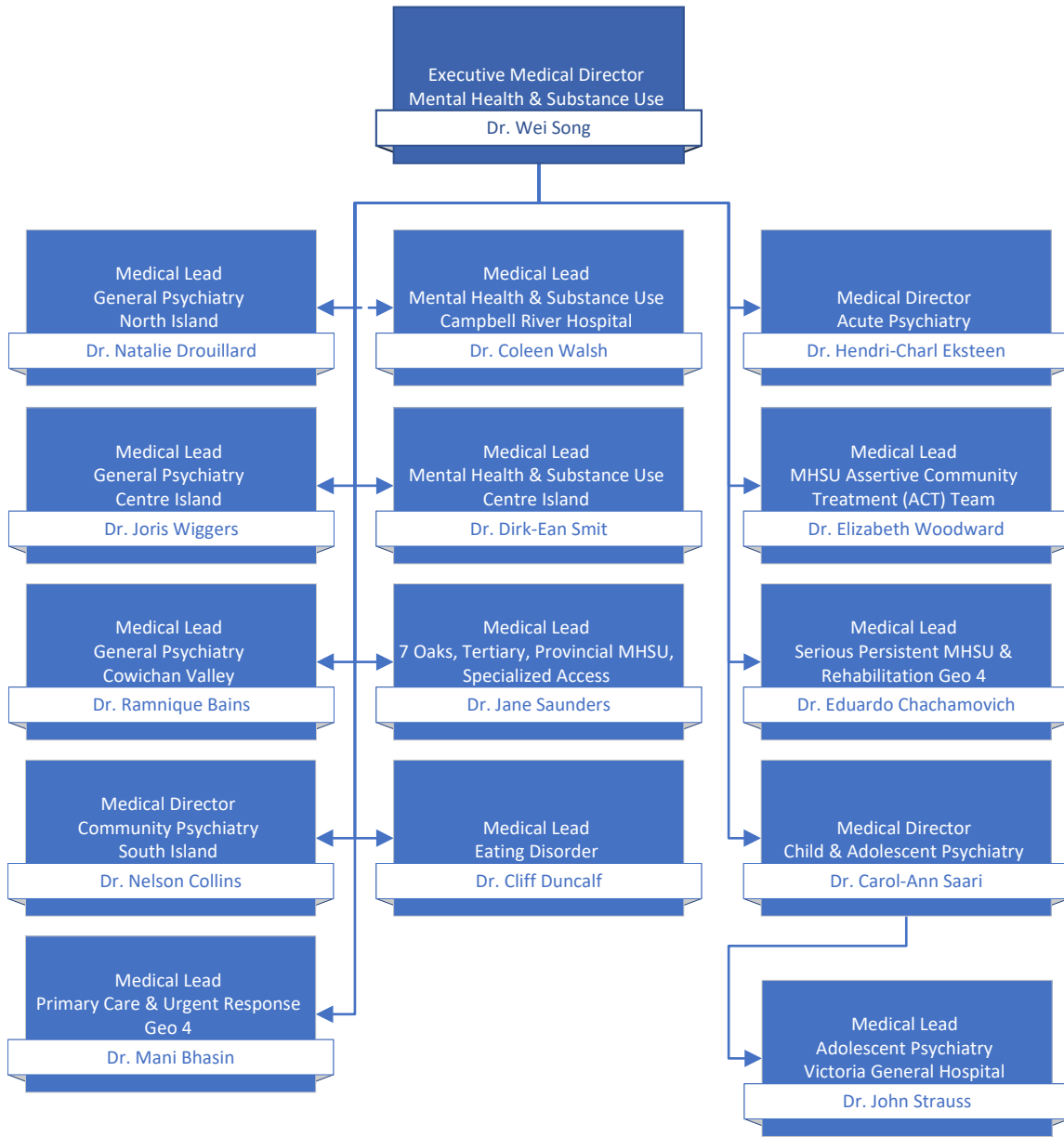
Quality & Safety



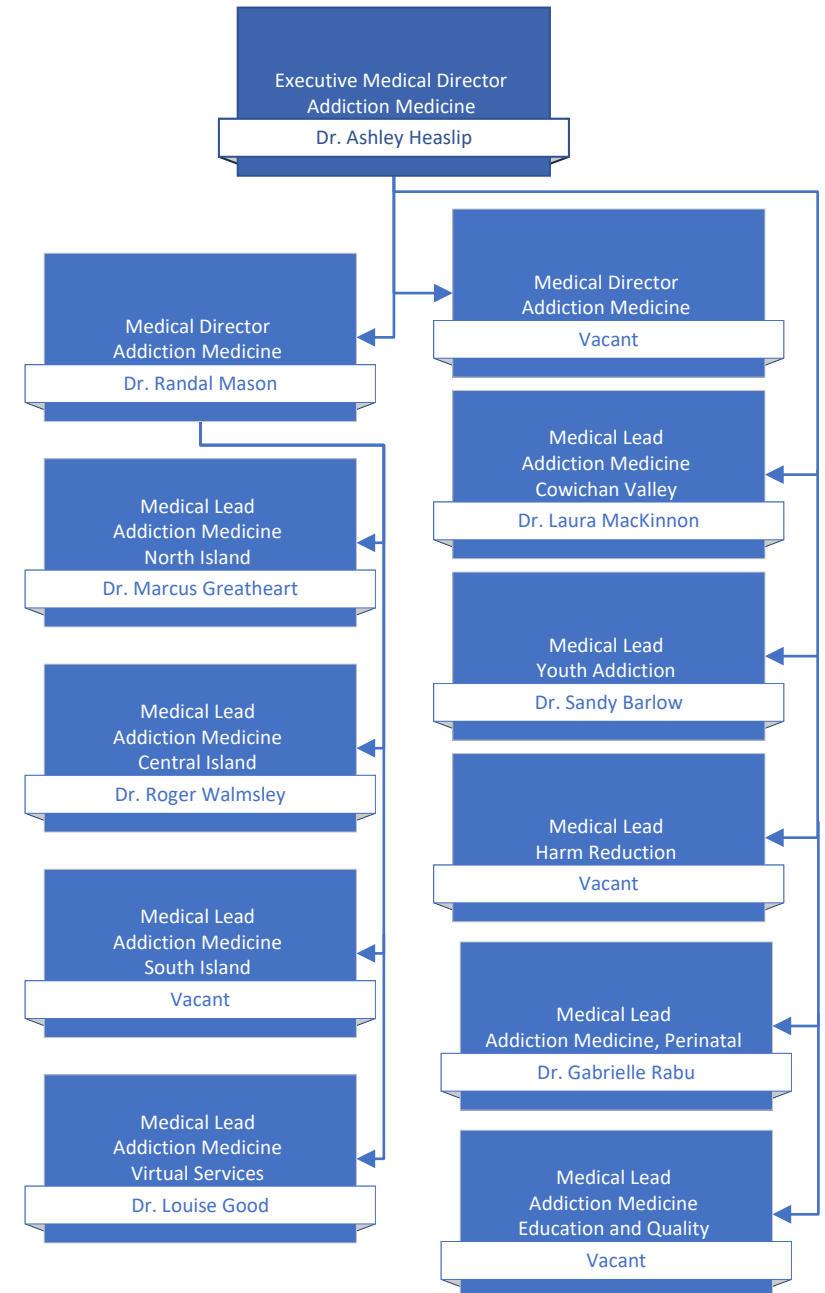
Surgery, Ambulatory Care, & Cancer Care Strategy



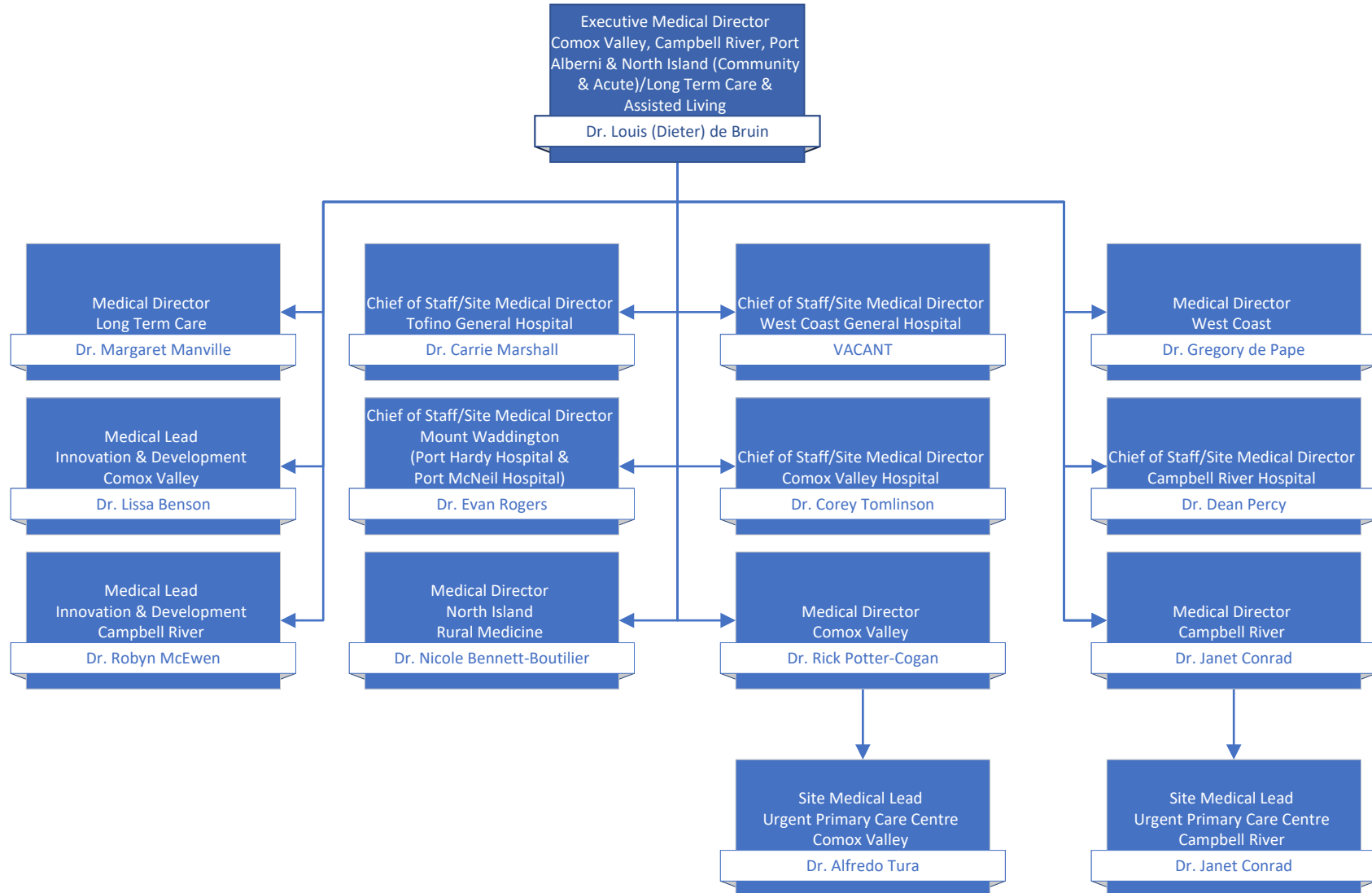
Mental Health & Substance Use



Addiction Medicine

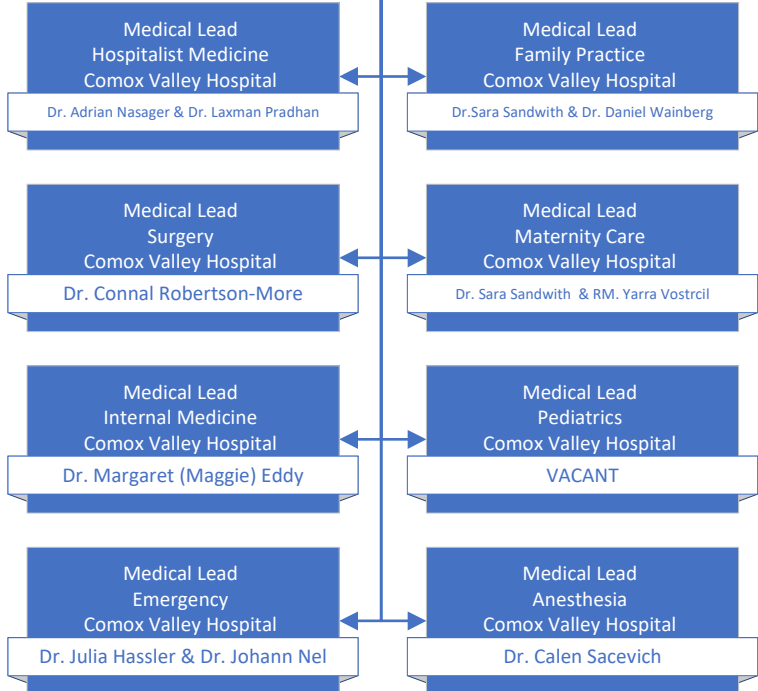


Comox Valley, Campbell River, Port Alberni & North Island/Long Term Care & Assisted Living



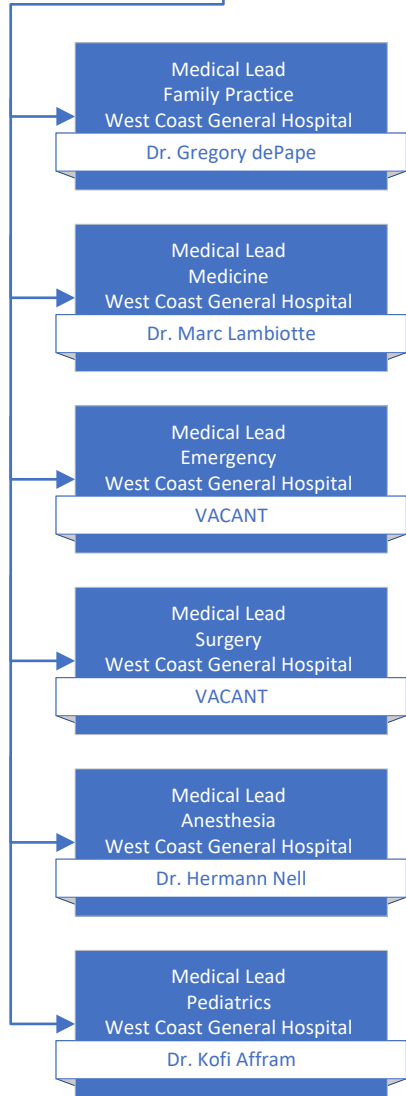
Comox Valley Hospital

Chief of Staff/Site Medical Director
Comox Valley Hospital
Dr. Corey Tomlinson



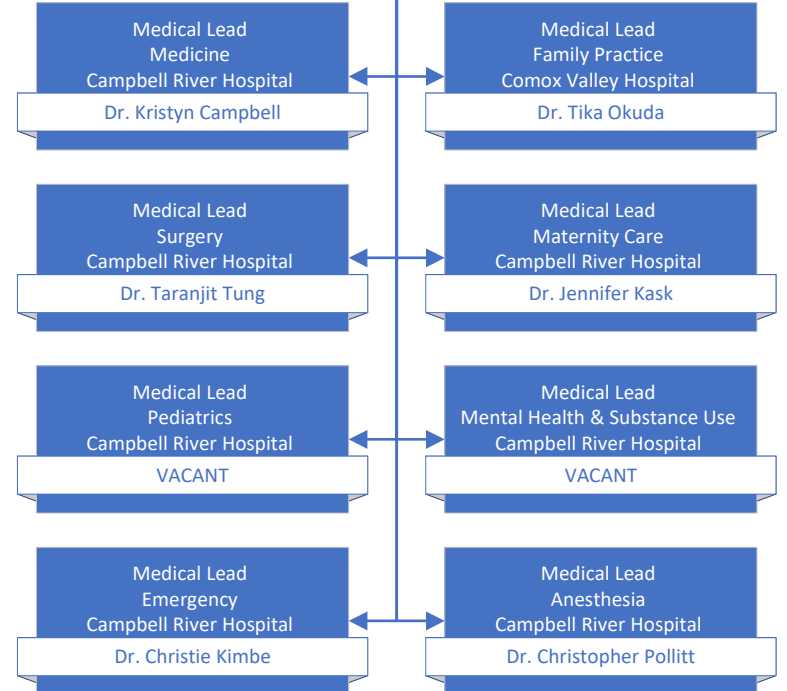
West Coast General Hospital

Chief of Staff/Site Medical Director
West Coast General Hospital
VACANT

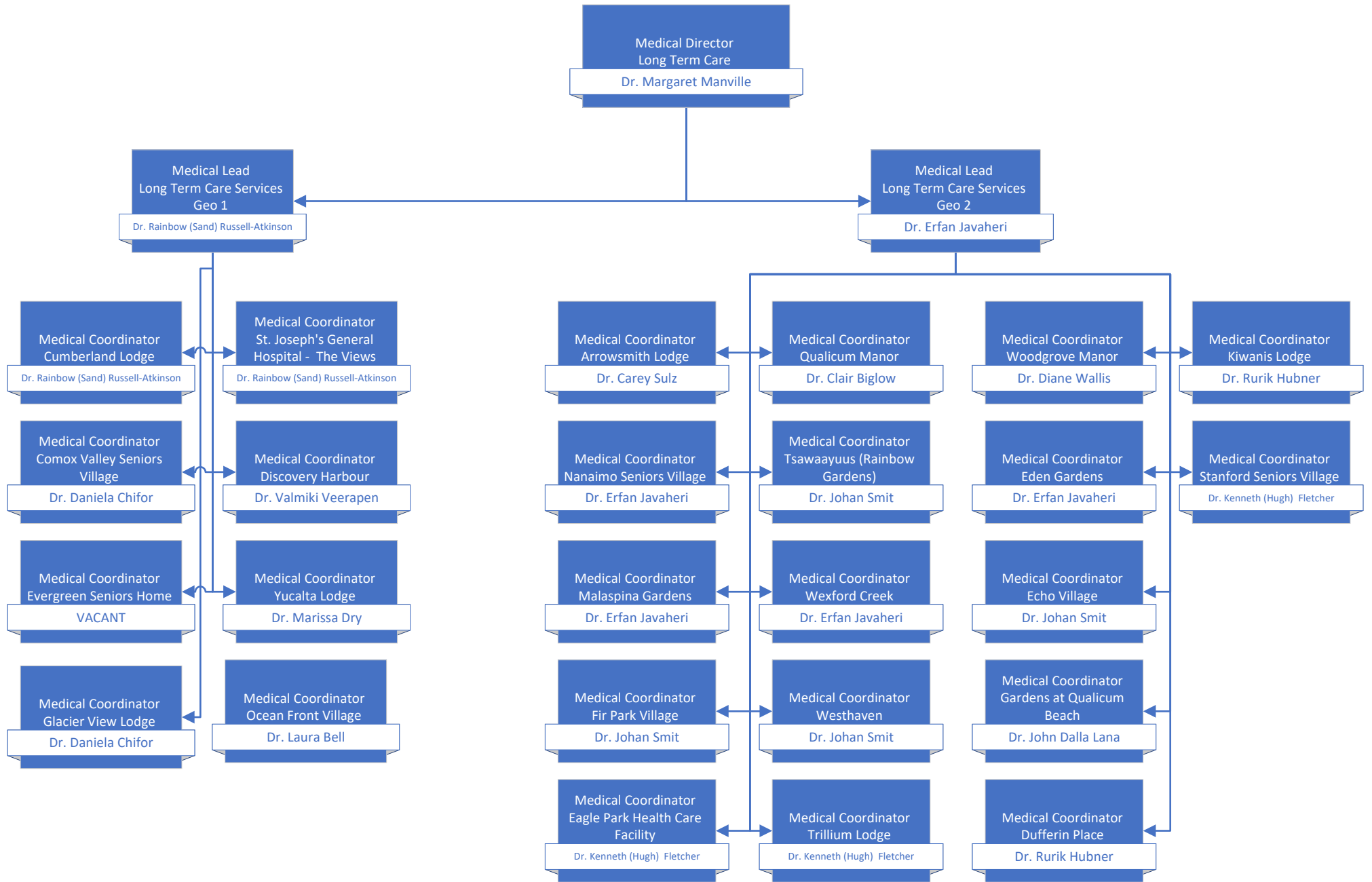


Campbell River Hospital

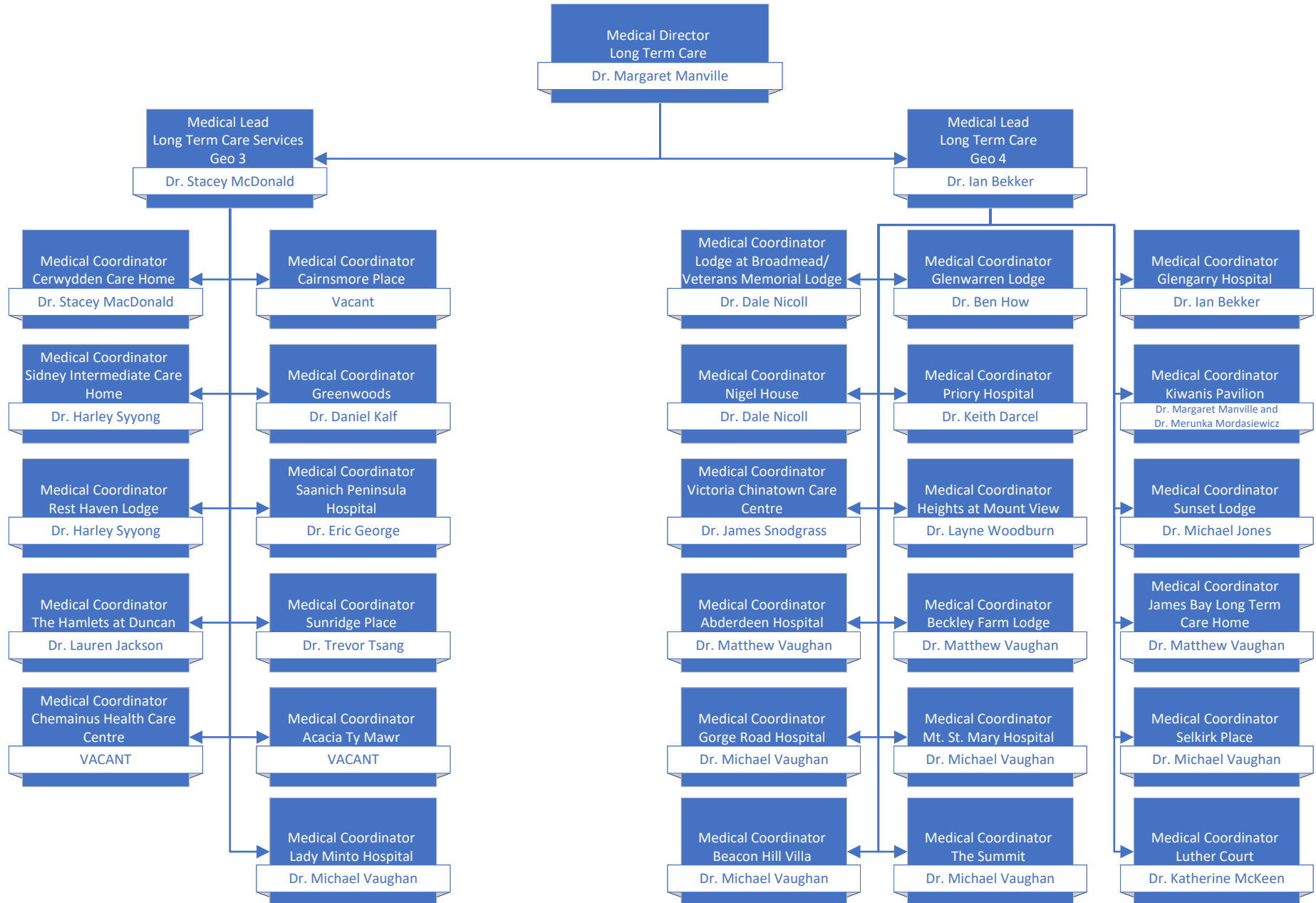
Chief of Staff/Site Medical Director
Campbell River Hospital
Dr. Dean Percy



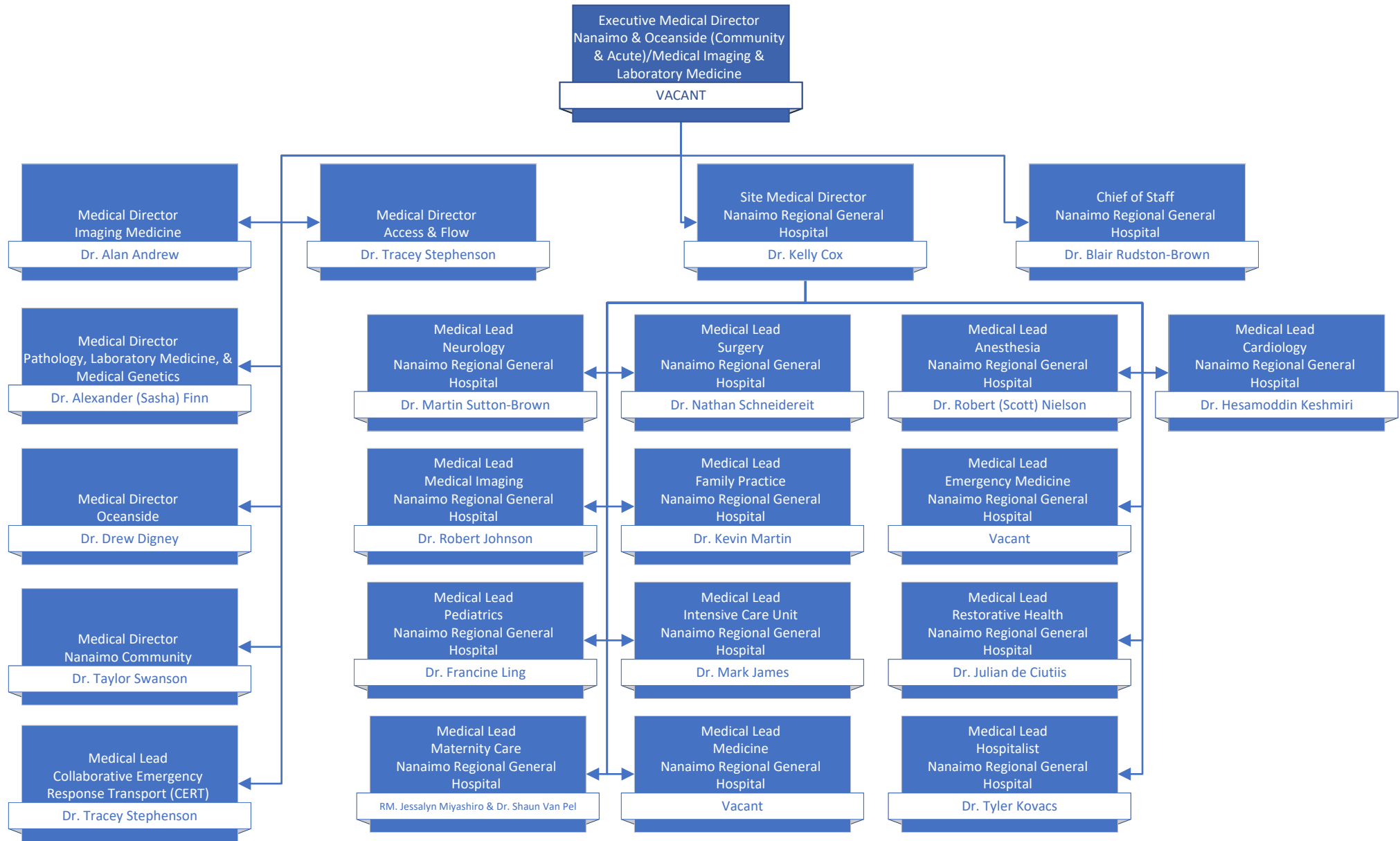
Long Term Care (Geo 1 & 2)



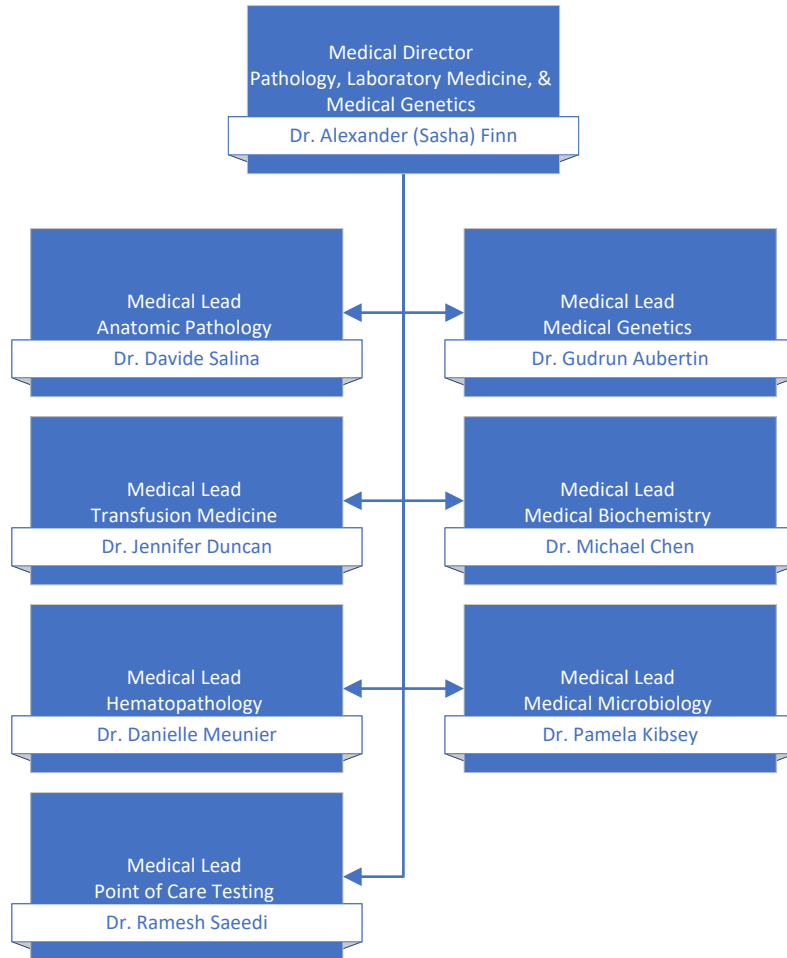
Long Term Care (Geo 3 & 4)



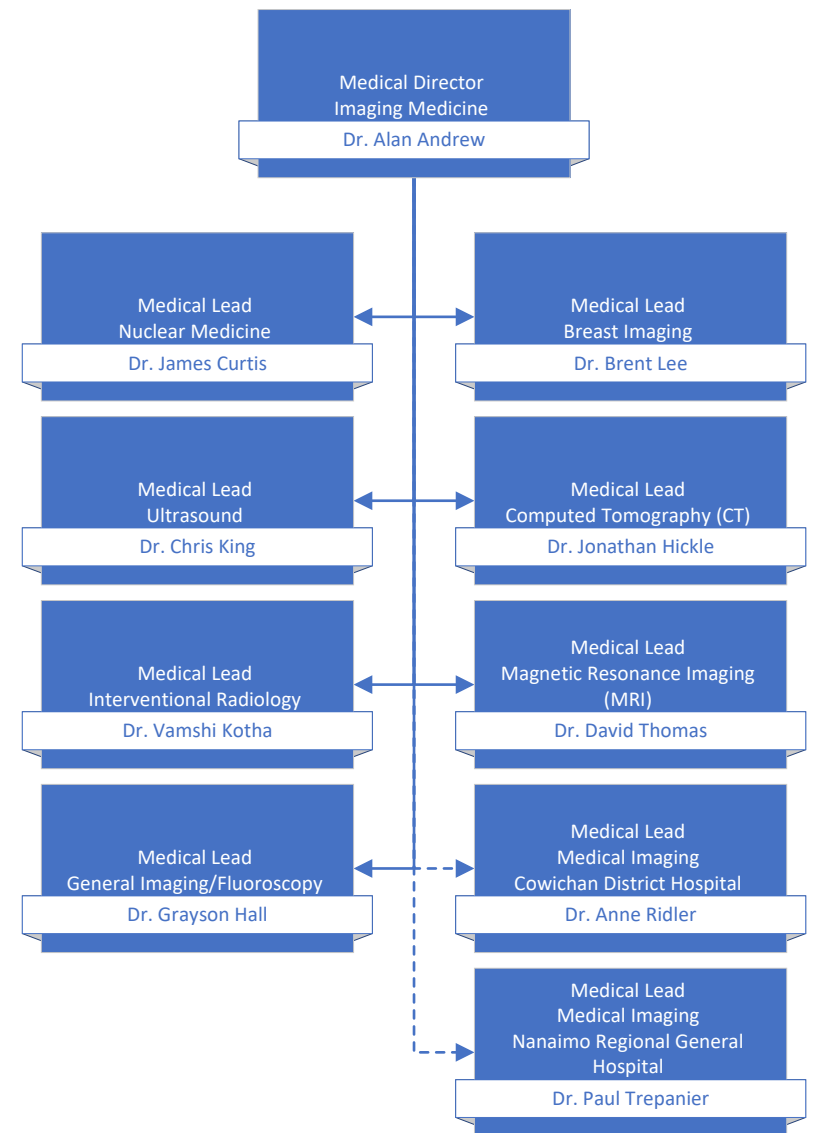
Nanaimo/Medical Imaging & Laboratory Medicine



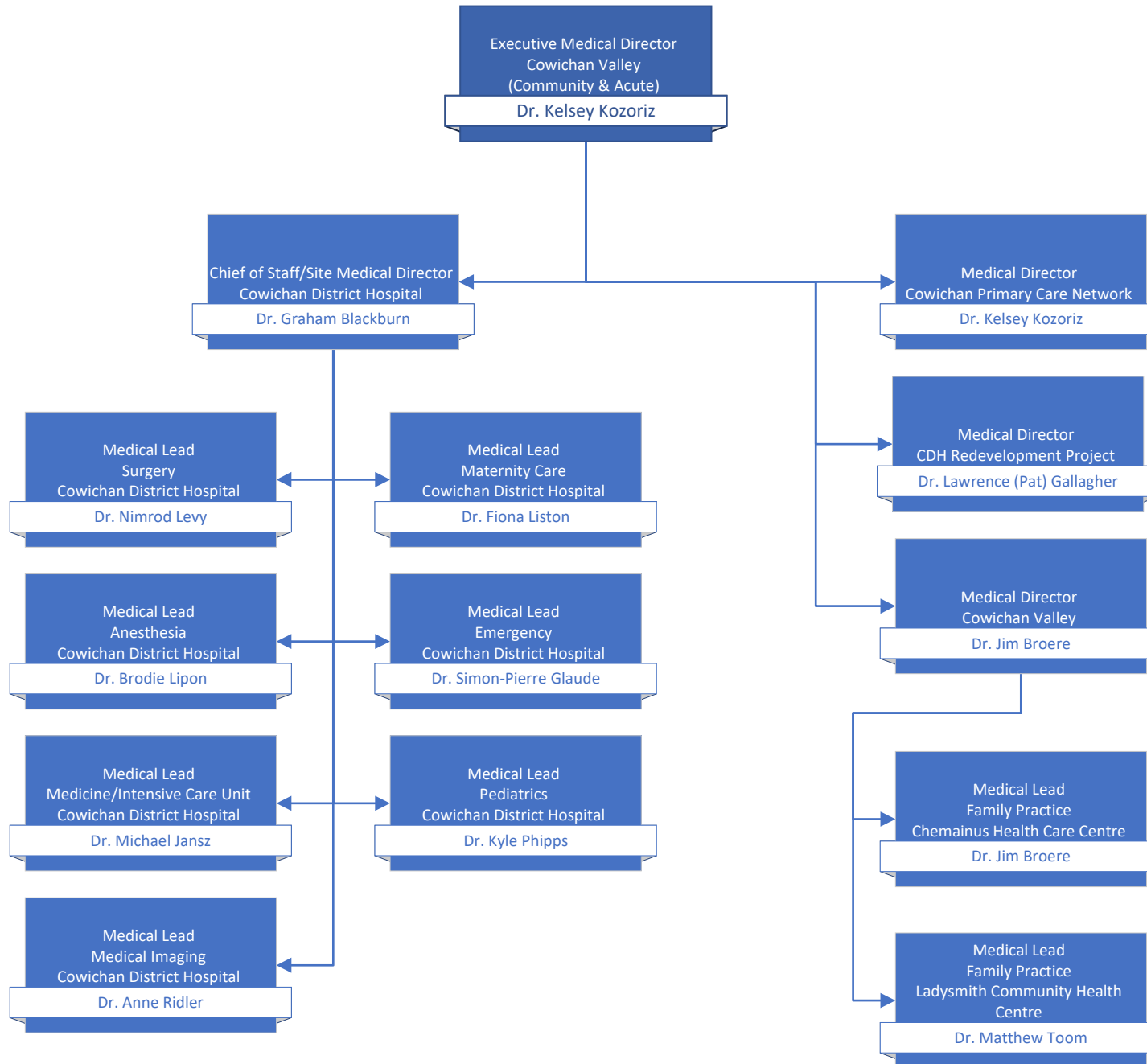
Pathology, Laboratory Medicine, & Medical Genetics Operations



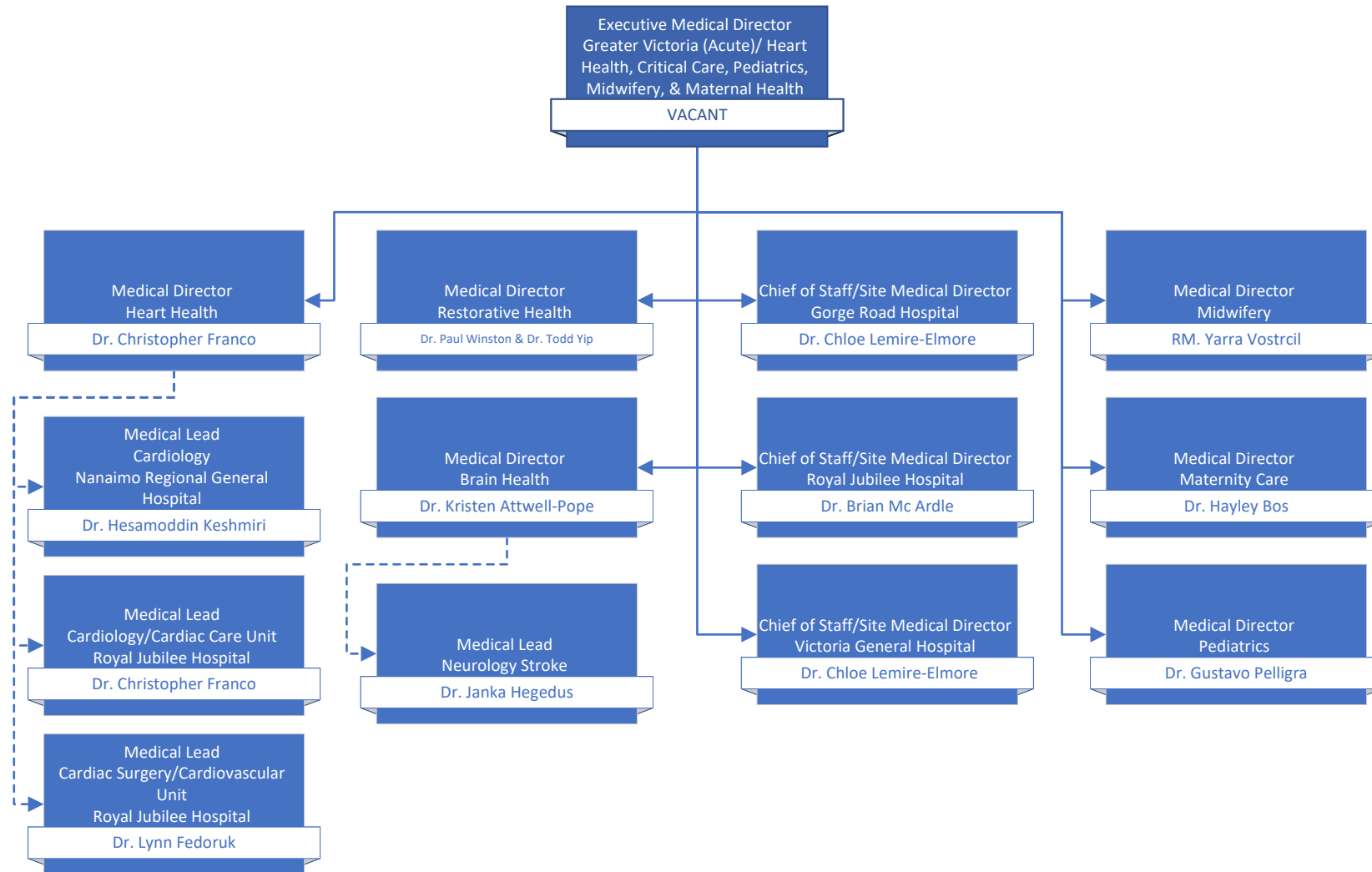
Imaging Medicine Operations



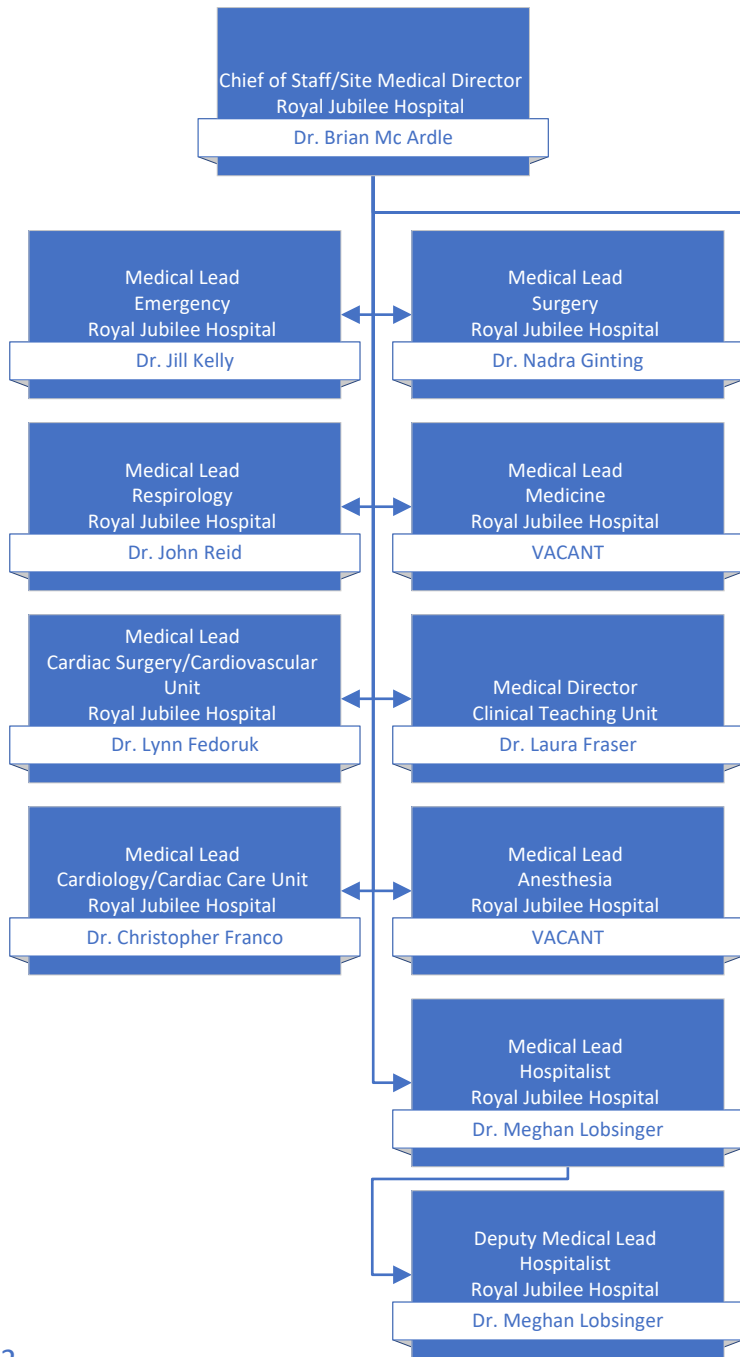
Cowichan Valley



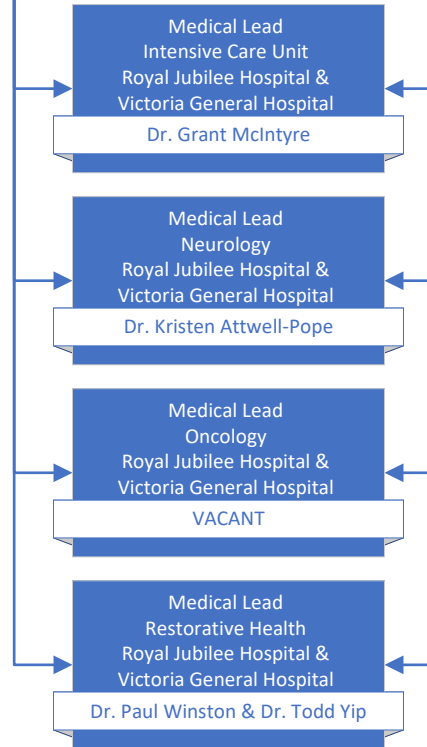
Greater Victoria Acute Care/Pediatrics, Midwifery, & Maternal Health



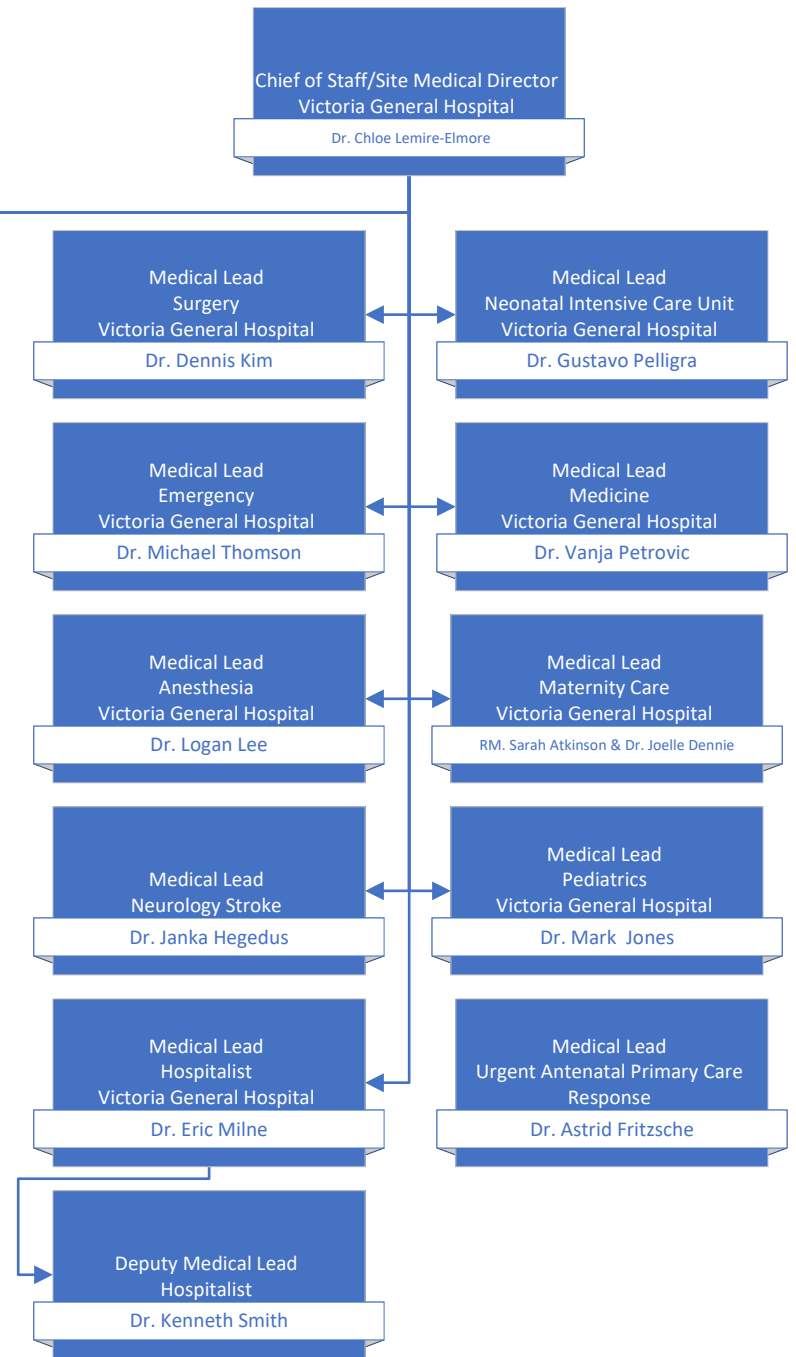
Royal Jubilee Hospital (RJH)



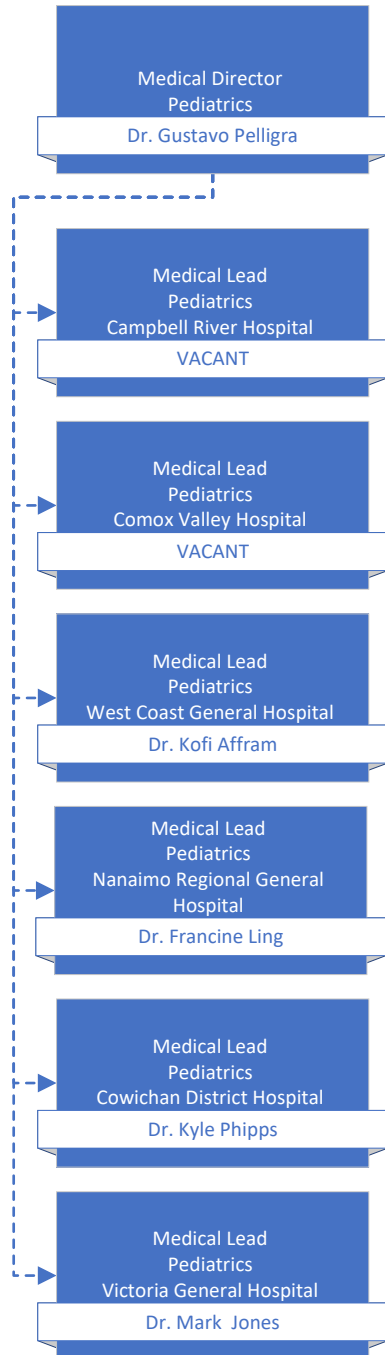
RJH & VGH



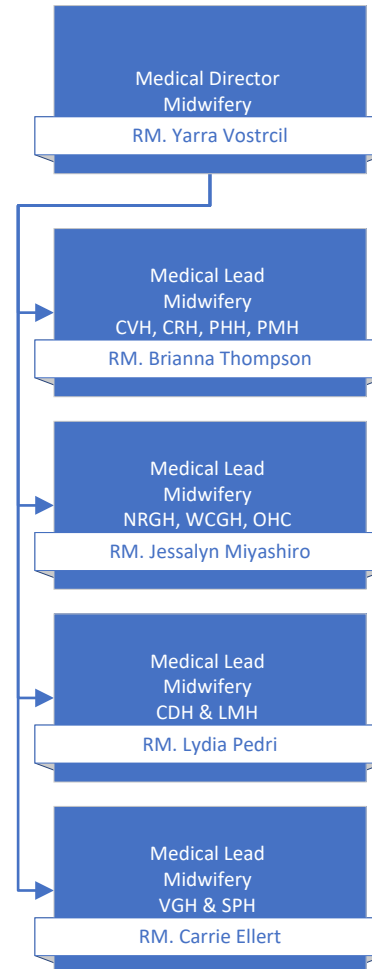
Victoria General Hospital (VGH)



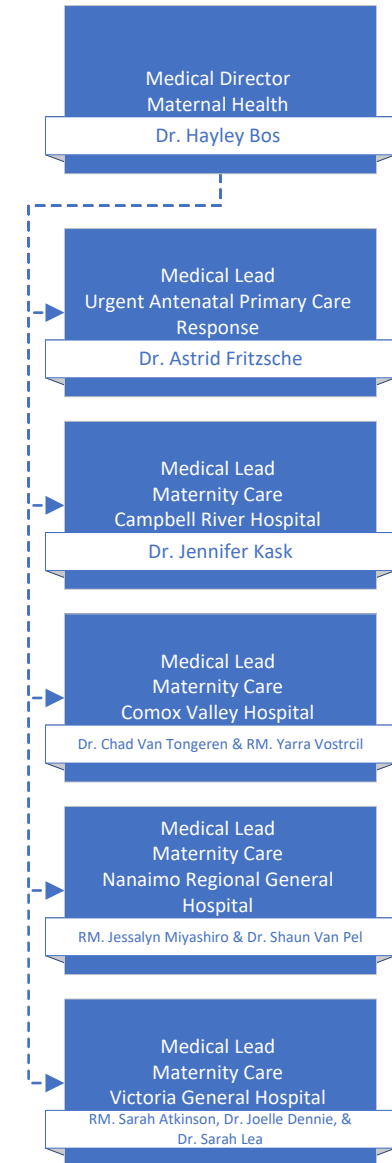
Pediatrics Regional Strategy



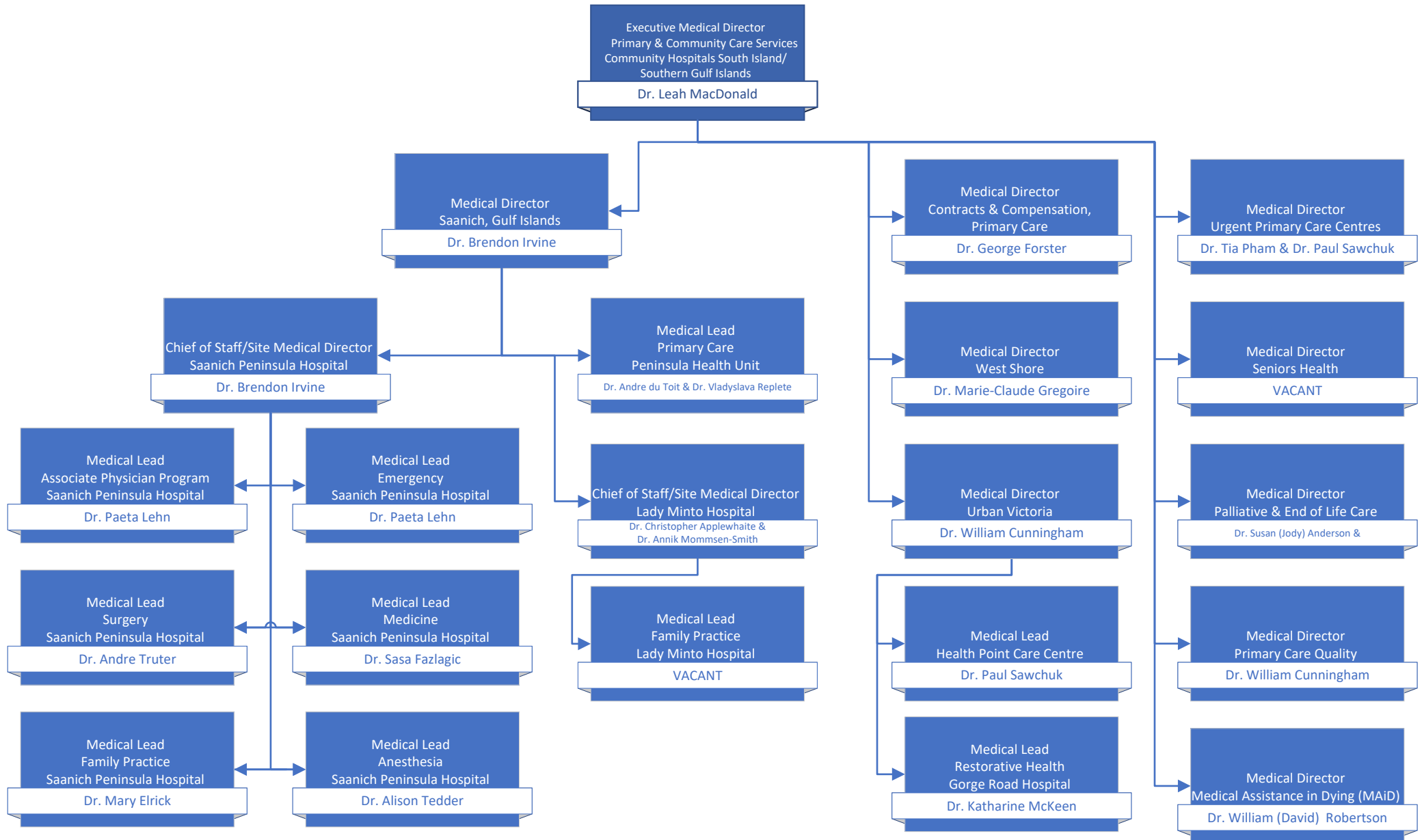
Midwifery Regional Strategy



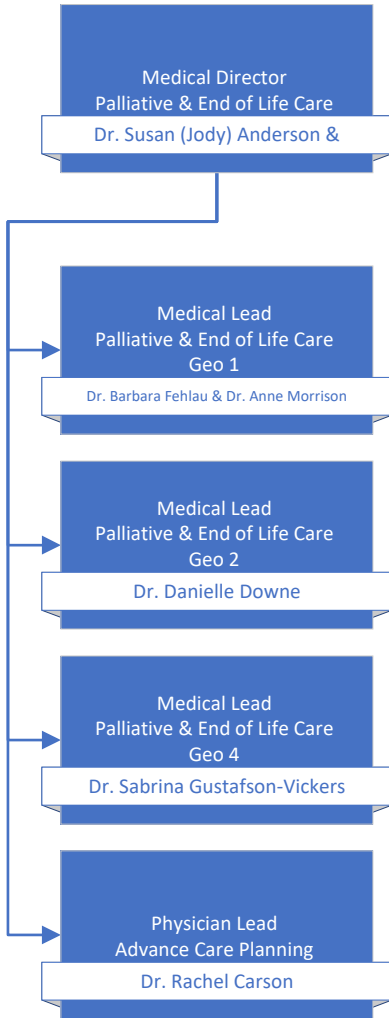
Maternal Health Regional Strategy



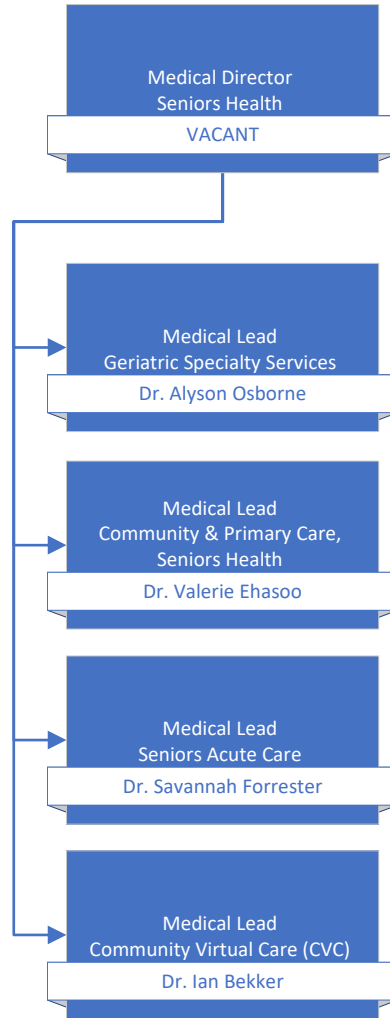
Saanich Peninsula & Gulf Islands/Seniors & Primary Care



Palliative & End of Life Care



Seniors Health



Urgent Primary Care Centres

