

# IS YOUR ITEM STERILE?

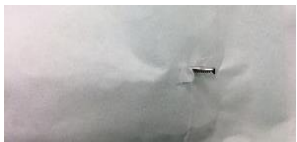
YOU ARE THE FINAL CHECK! BE SURE INSTRUMENTS ARE SAFE TO USE.

## BEFORE YOU OPEN THE PACKAGE, INSPECT THE OUTSIDE TO ENSURE PACKAGE INTEGRITY IS INTACT

### NOT STERILE



- Torn package from rubbing on shelving
- Tape seal is torn
- Package seal is open



- Signs of moisture - brown staining



- Tear or hole in package

### STERILE



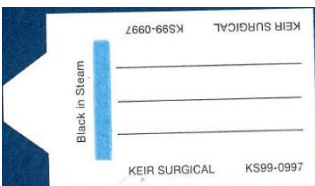
- Tray wrap integrity intact
- Tape seal intact
- Package seal intact



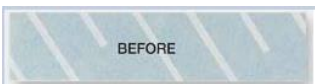
- no holes or tears
- No signs of moisture contamination

## CHECK THE EXTERNAL INDICATOR FOR POSITIVE COLOR CHANGE

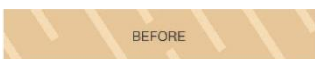
### NOT STERILE



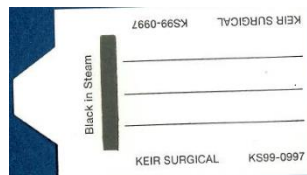
- Look for printing on the package, tape or strip that indicates the expected colour change.



- Lines on external tape will be white when unsterile



### STERILE



- Look for expected color change to verify sterilization



- Lines on external tape will be black when sterile



## CHECK THE INTERNAL INDICATOR FOR POSITIVE COLOR CHANGE

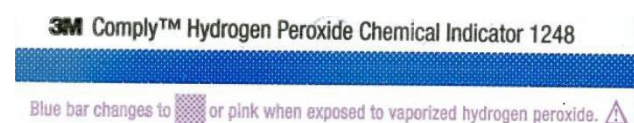
### NOT STERILE



- Look for printing that indicates the expected color change



- Do not use if there is no internal indicator in package.



### STERILE



- Black line must extend into the Accept portion of the ticket.



- Positive color change must be present.

