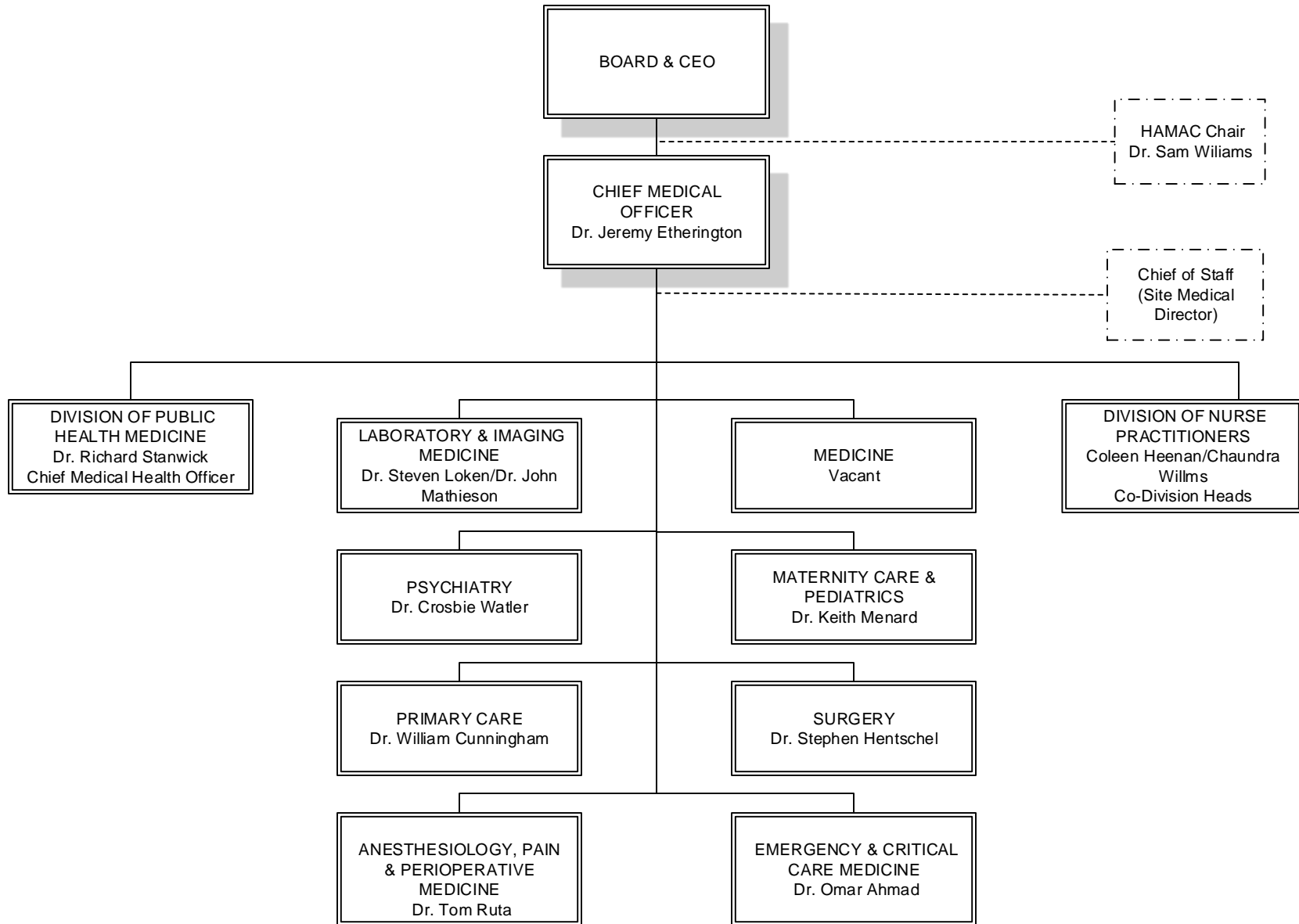
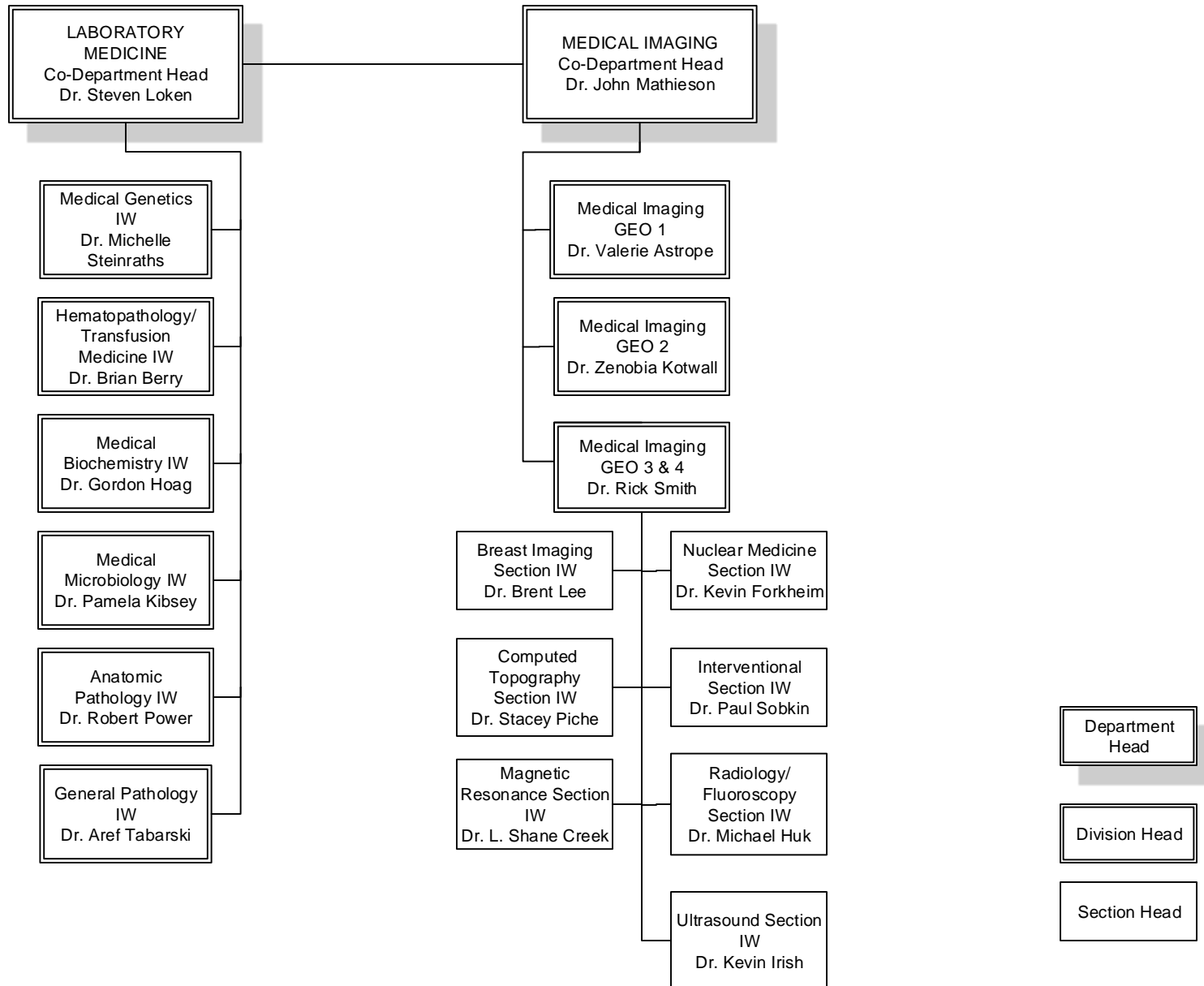


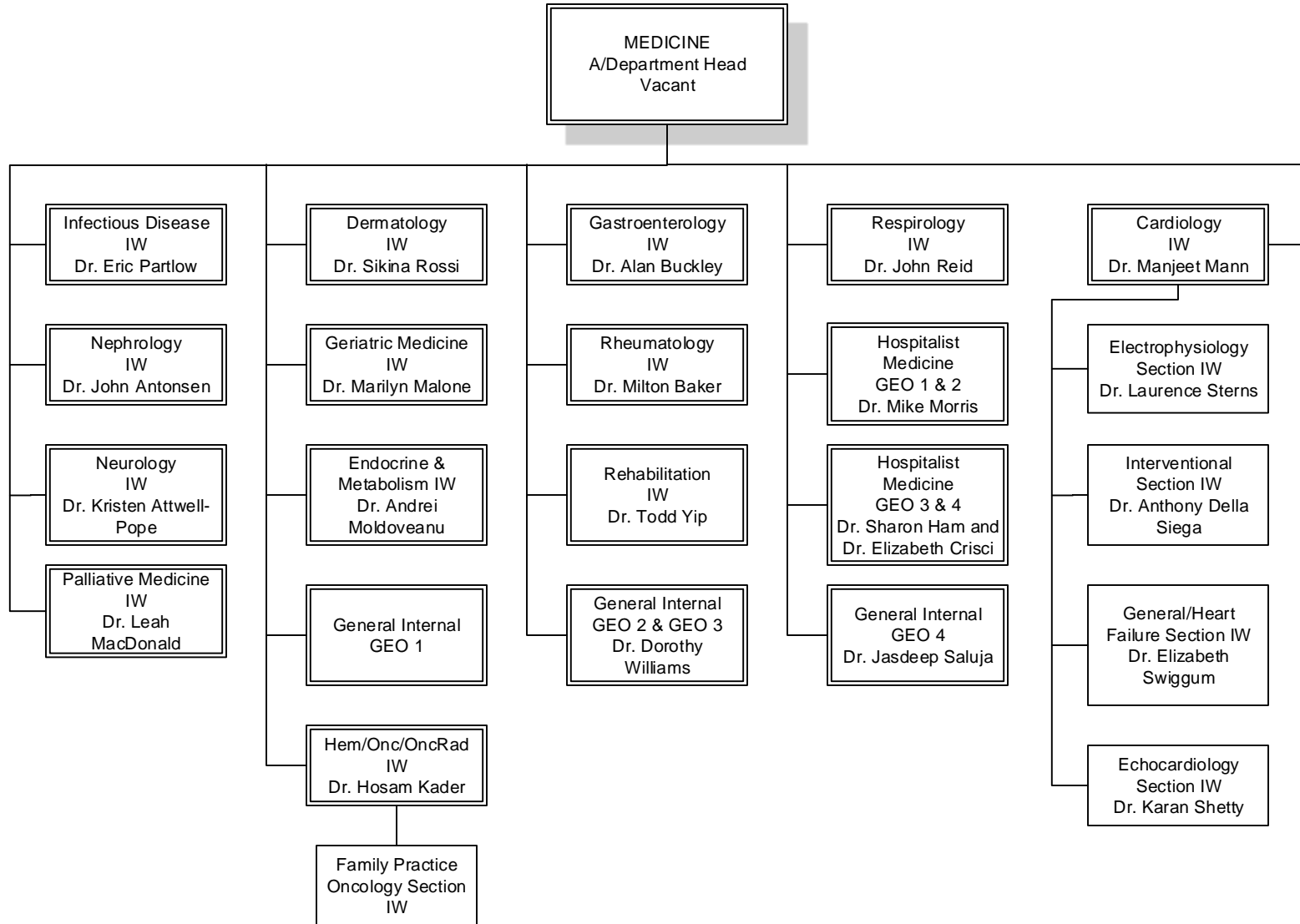
# Island Health Medical Staff Department Structure



# Laboratory & Imaging Medicine



# Medicine

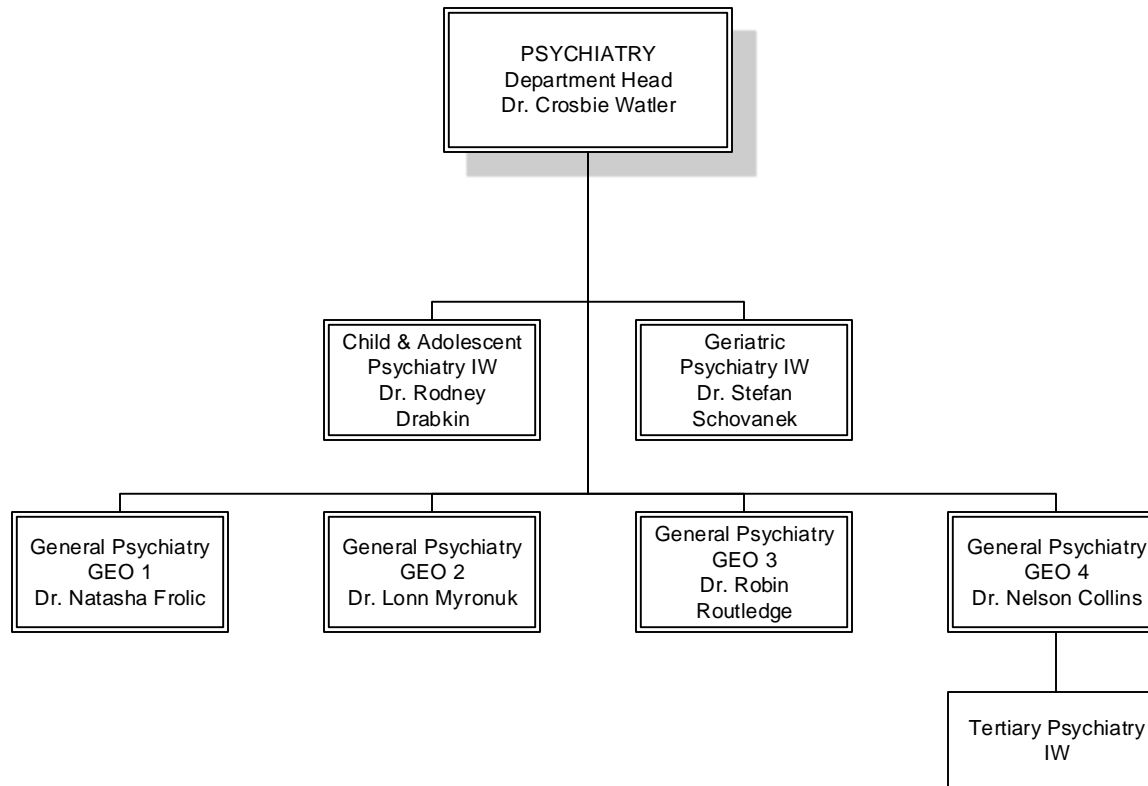


Department Head

Division Head

Section Head

# Psychiatry

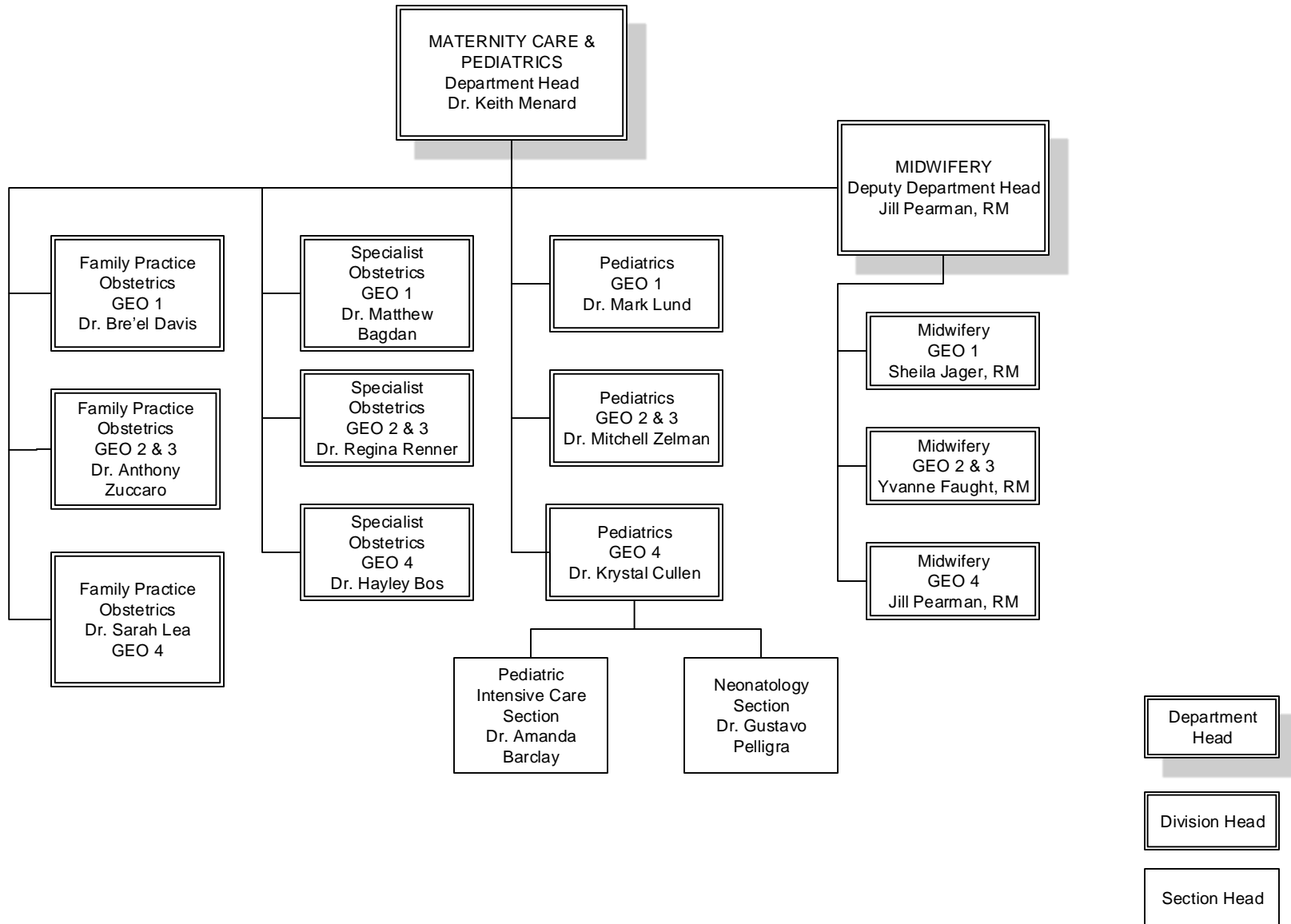


Department  
Head

Division Head

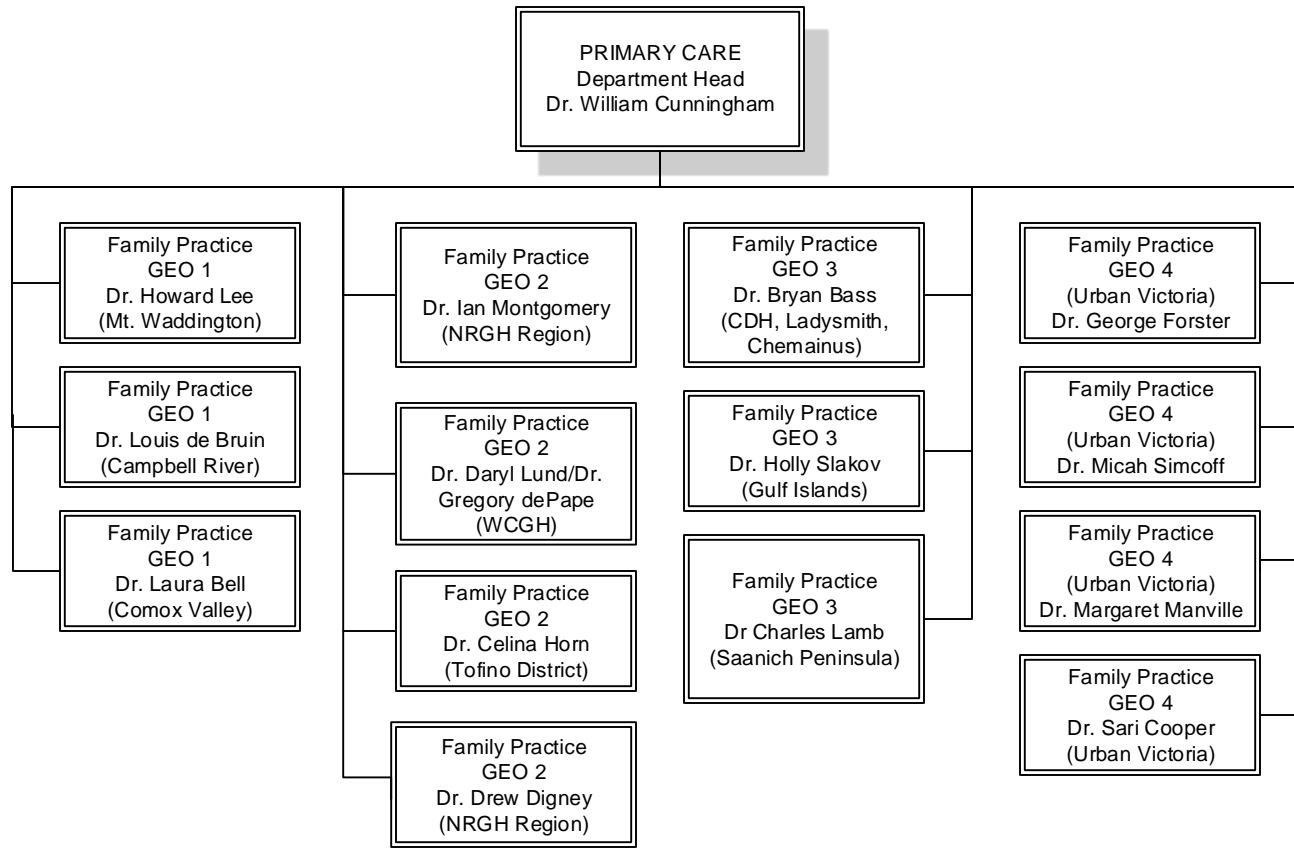
Section Head

# Maternity Care & Pediatrics



10/31/2018

# Primary Care

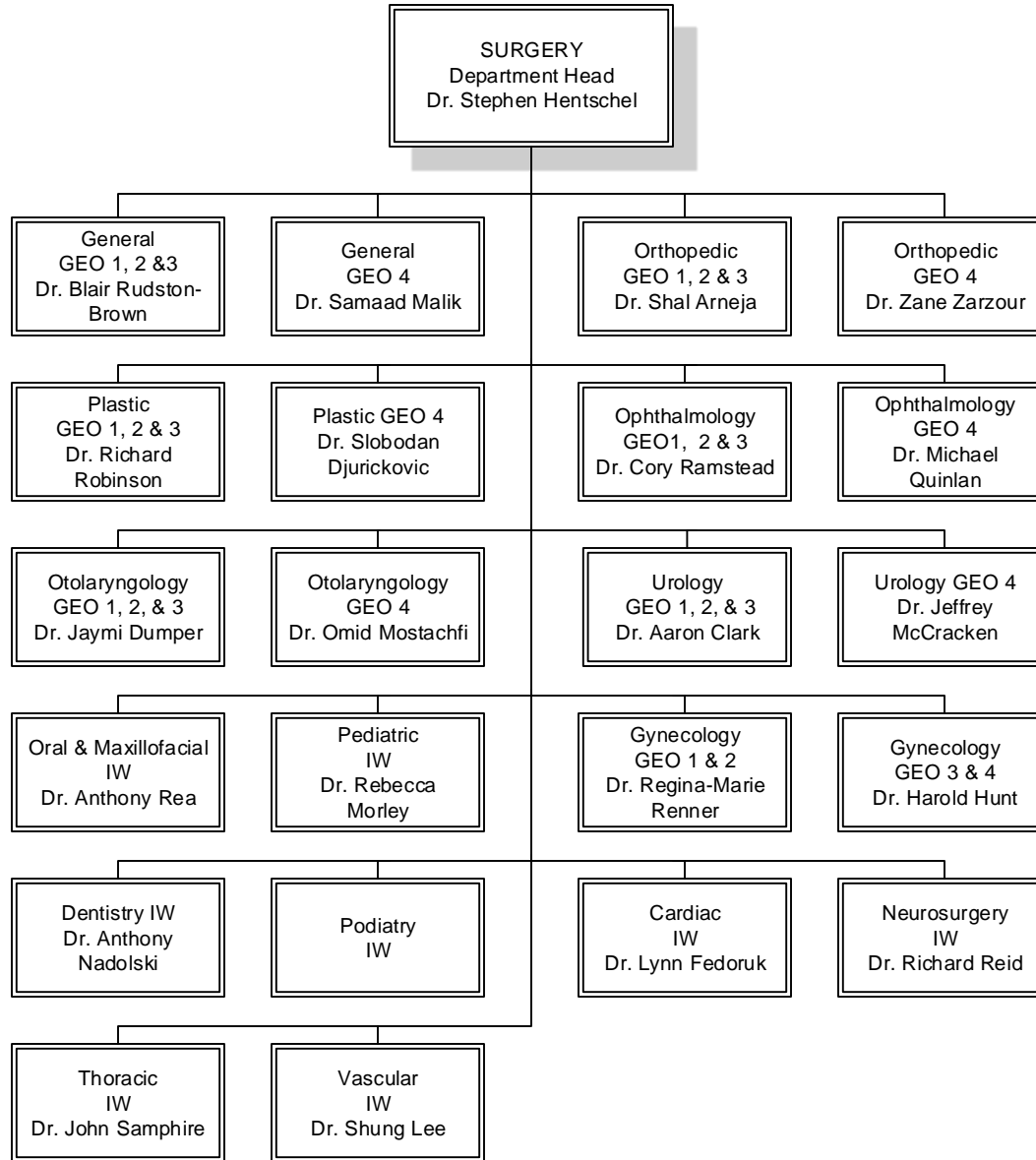


Department Head

Division Head

Section Head

# Surgery

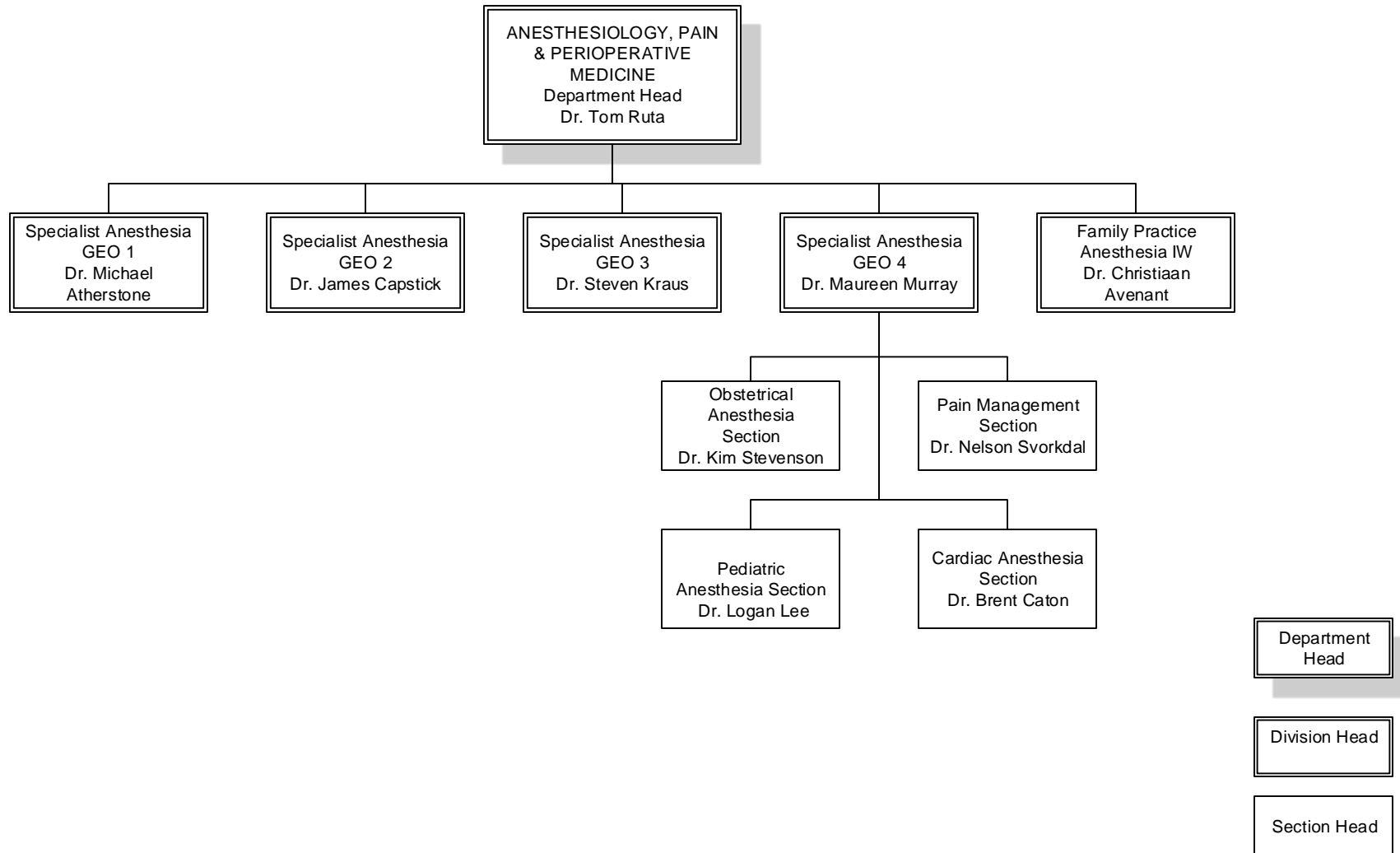


Department Head

Division Head

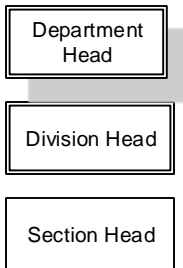
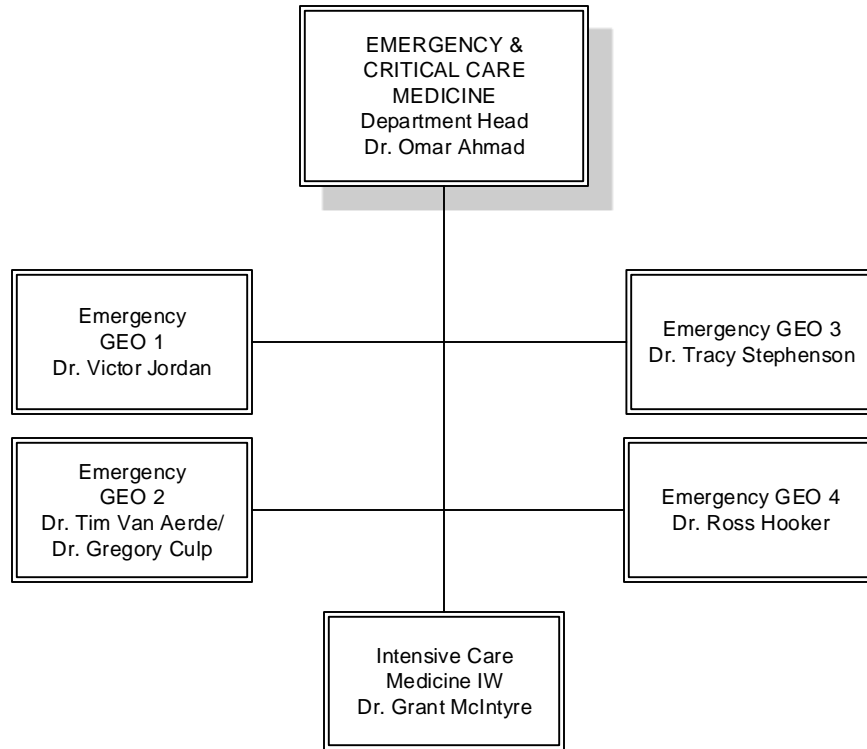
Section Head

# Anesthesiology, Pain and Perioperative Medicine





# Emergency & Critical Care Medicine



# Chief of Staff (Site Medical Director)

